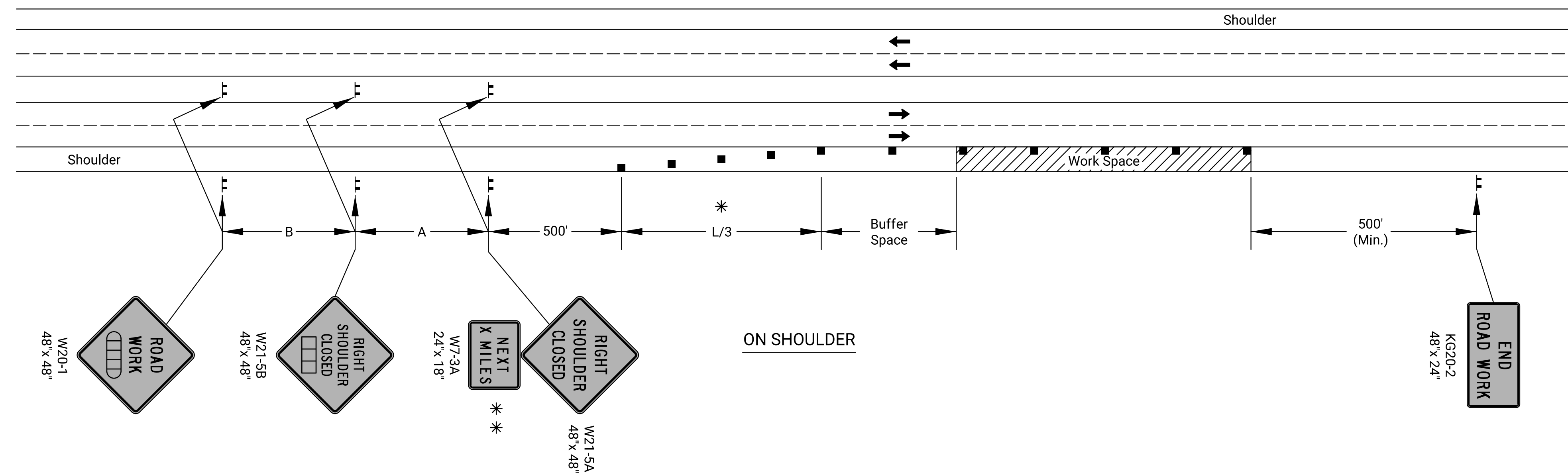
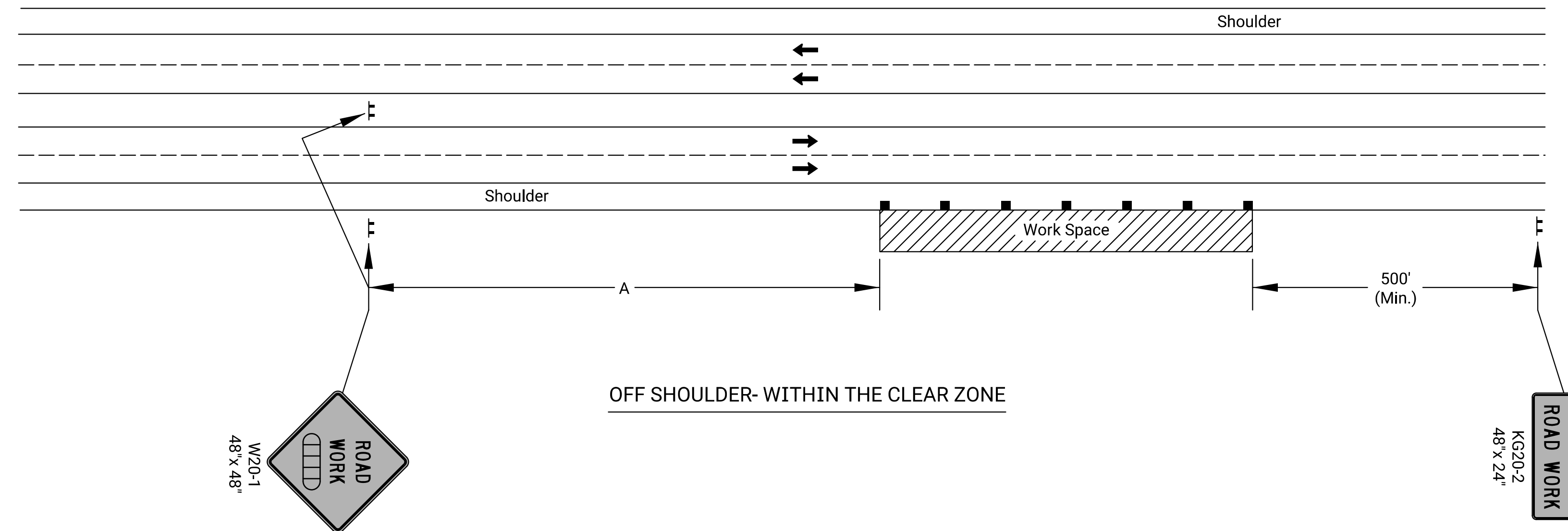


Notes:

For work in the median, install signs and channelizing devices for each direction of traffic according to the applicable typical drawing.

No traffic control is required if the Work Space is located outside of the clear zone.

For operations of 60 minutes or less, all signs and channelizing devices may be eliminated if a vehicle with a high-intensity rotating, flashing, oscillating, or strobe light is used.



* Omit taper if paved shoulder is less than 8' wide.
 ** Eliminate W7-3a if shoulder is closed for less than 2 miles.

- X Length to the Nearest Whole Mile
- Channelizing Device
- ▭ Ahead, 1500 ft, or 1 Mile
- ▭ Ahead, 1000 ft, 1500 ft or 1/2 Mile

Plotted : 30-SEP-2020 20:36
 Drawn By : Road
 File : te722.dgn

3					
2					
1					
NO.	DATE	REVISIONS	BY	APP'D	

KANSAS DEPARTMENT OF TRANSPORTATION

**TRAFFIC CONTROL
SHOULDER WORK
DIVIDED ROADWAY**

TE722

FHWA APPROVAL	06/01/15	APP'D	Kristina Erickson
DESIGNED	L.E.R.	DETAILED	R.W.B.
DESIGN CK.		DETAIL CK.	
		QUANTITIES	TRACED
		QUAN. CK.	TRACE CK.