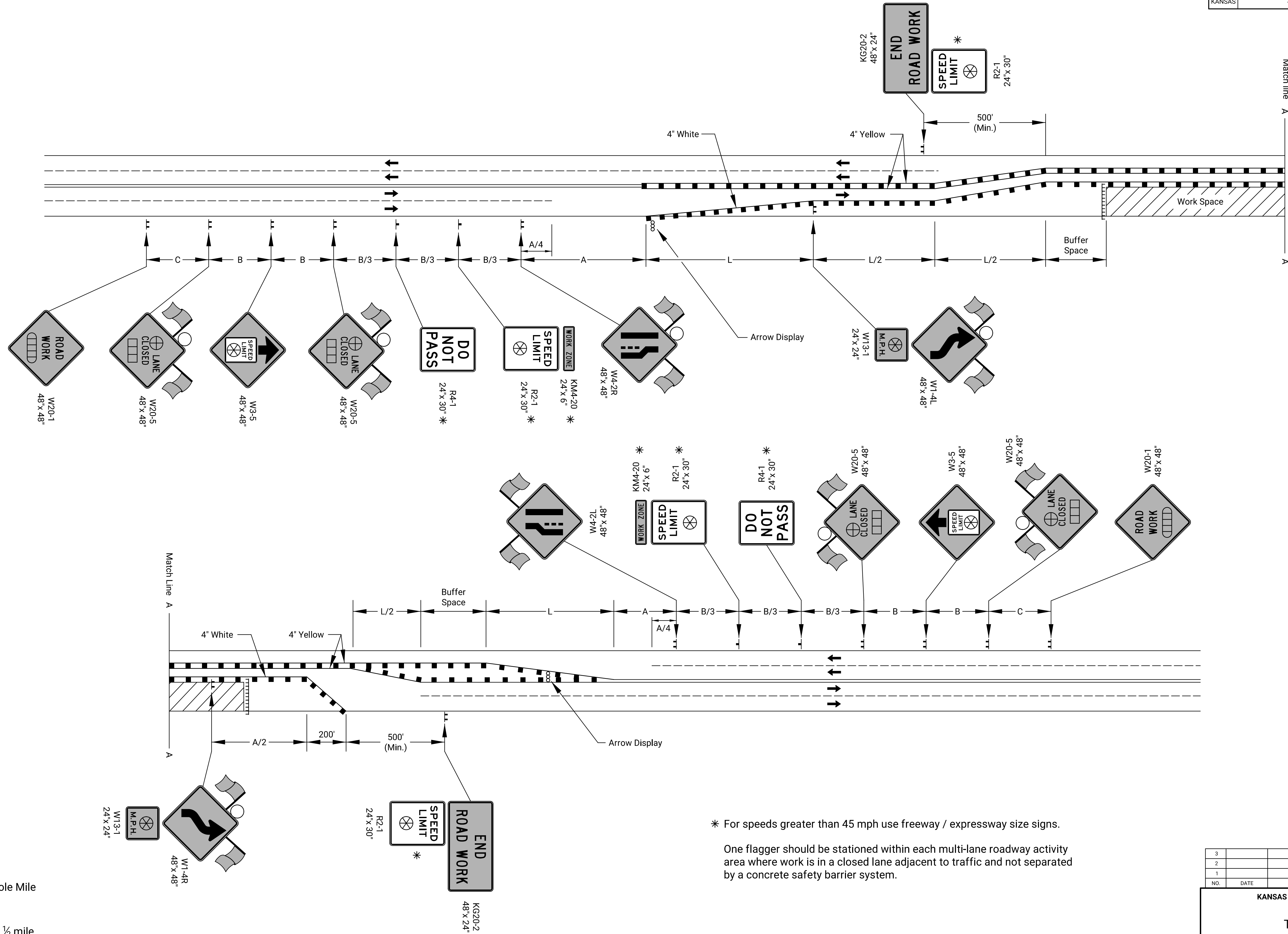


STATE	PROJECT NO.	YEAR	SHEET NO.	TOTAL SHEETS
KANSAS	472-85394	2020	42	44



Drawn By : Road
 File : te748.dgn
 Plotted : 30-SEP-2020 20:36

- ▬▬ Type 3 Barricades
- X Length to the Nearest Whole Mile
- Channelizing Device
- ▭ Ahead, 1500 ft, or 1 mile
- ▭ Ahead, 1000 ft, 1500 ft, or 1/2 mile
- ⊕ Right or Left
- ⊗ Speed to be determined by the Engineer
- Type "A" Low Intensity Warning Light

* For speeds greater than 45 mph use freeway / expressway size signs.

One flagger should be stationed within each multi-lane roadway activity area where work is in a closed lane adjacent to traffic and not separated by a concrete safety barrier system.

3				
2				
1				
NO.	DATE	REVISIONS	BY	APPD
KANSAS DEPARTMENT OF TRANSPORTATION				
TRAFFIC CONTROL CROSSOVER ON UNDIVIDED ROADWAY				
TE748				
FHWA APPROVAL	06/01/15	APPD	Kristina Erickson	
DESIGNED	B.A.H.	DETAILED	B.A.H.	QUANTITIES
DESIGN CK.	DETAIL CK.	QUAN. CK.	TRACE	CK.