

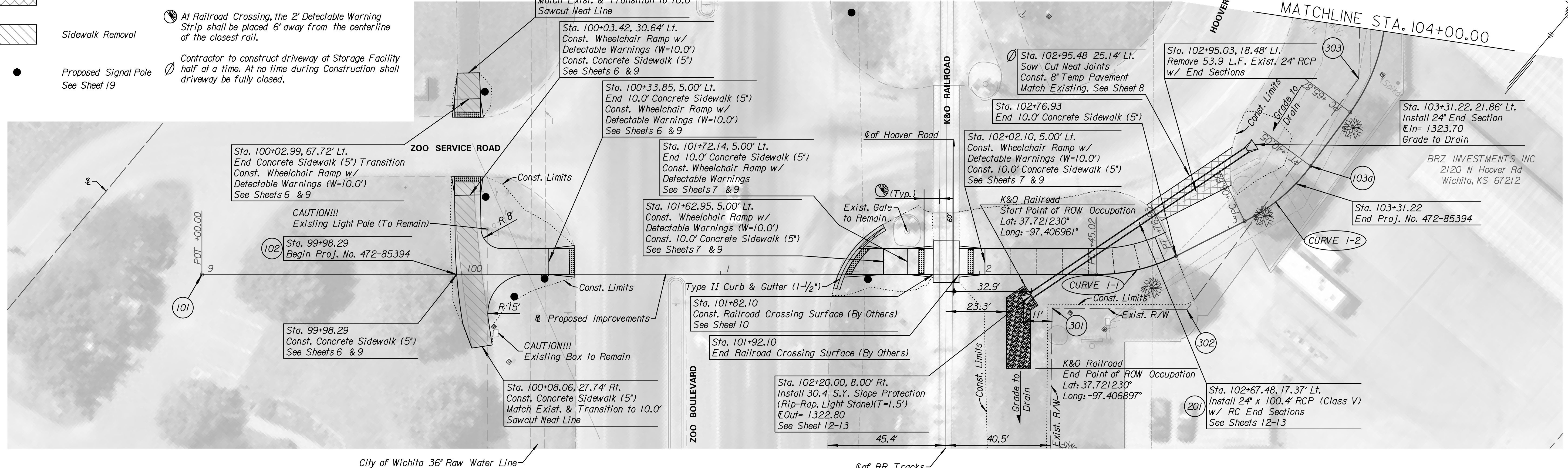
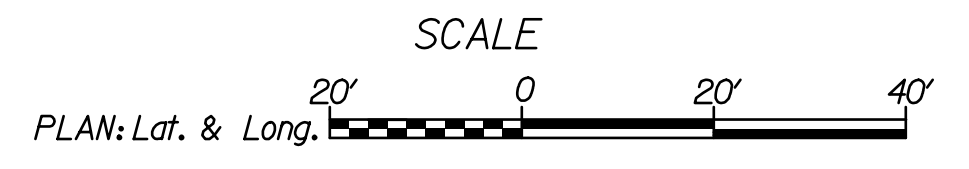
LEGEND

- Pavement Removal
- Sidewalk Removal
- Proposed Signal Pole
See Sheet 19

Note:

- (XXX) For Project Control, Curve, & Coordinate Data, See Sheet 3
- At Railroad Crossing, the 2' Detectable Warning Strip shall be placed 6' away from the centerline of the closest rail.
- Contractor to construct driveway at Storage Facility half at a time. At no time during Construction shall driveway be fully closed.

K&O Railroad
 DOT Crossing: 445200P
 Mile Post: 489.70, Lat: 37.721356°, Long: -97.407159°
 Storm Sewer in Railroad Right-of-Way begins
 926' Southeast of Railroad Mile Post 490



TranSystems

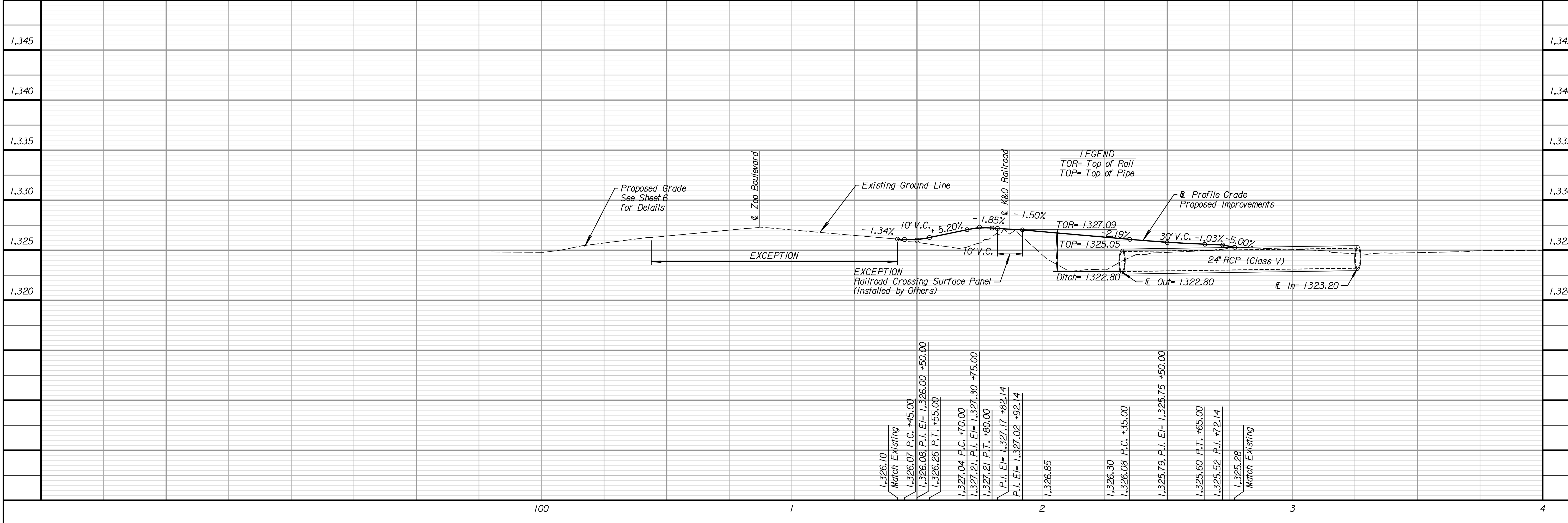
245 NORTH WACO
 SUITE 222
 WICHITA, KANSAS 67202
 PHONE: 316-303-3000
 FAX: 316-462-5629

CONSULTANTS:

BRZ INVESTMENTS INC
 2120 N Hoover Rd
 Wichita, KS 67212

HOOPER ROAD MULTI-USE PATH
 & TRAFFIC SIGNAL
 ZOO BLVD. TO 29TH STREET NORTH

WICHITA, KANSAS



REVISIONS:

MARK	DATE	DESCRIPTION

PROJ NO: 472-85394
 SCALE: 1"=20'
 DATE: 9/30/2020
 DESIGNED BY: MCG
 DRAWN BY: MLB
 CHECKED BY: CCB

SHEET TITLE:

PLAN SHEET
 STA. 100+00.00
 TO
 STA. 104+00.00

SHEET NO.
 5
 SHEET 5 OF 44

ccbanka
 9/30/2020
 8:31:38 PM - c:\transtransystems\paw\ccbanka\40735211\CDV\MD1-101.dgn