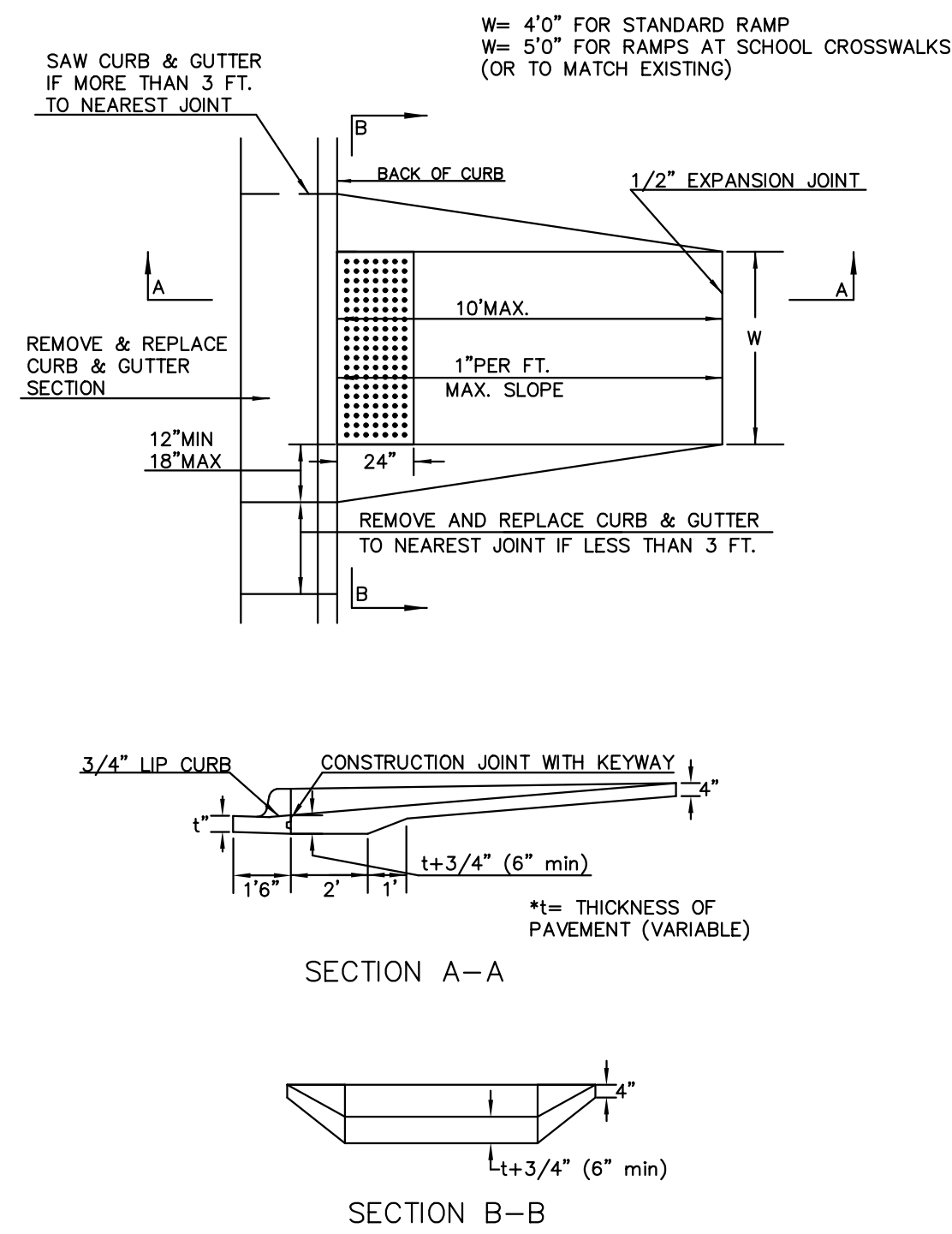
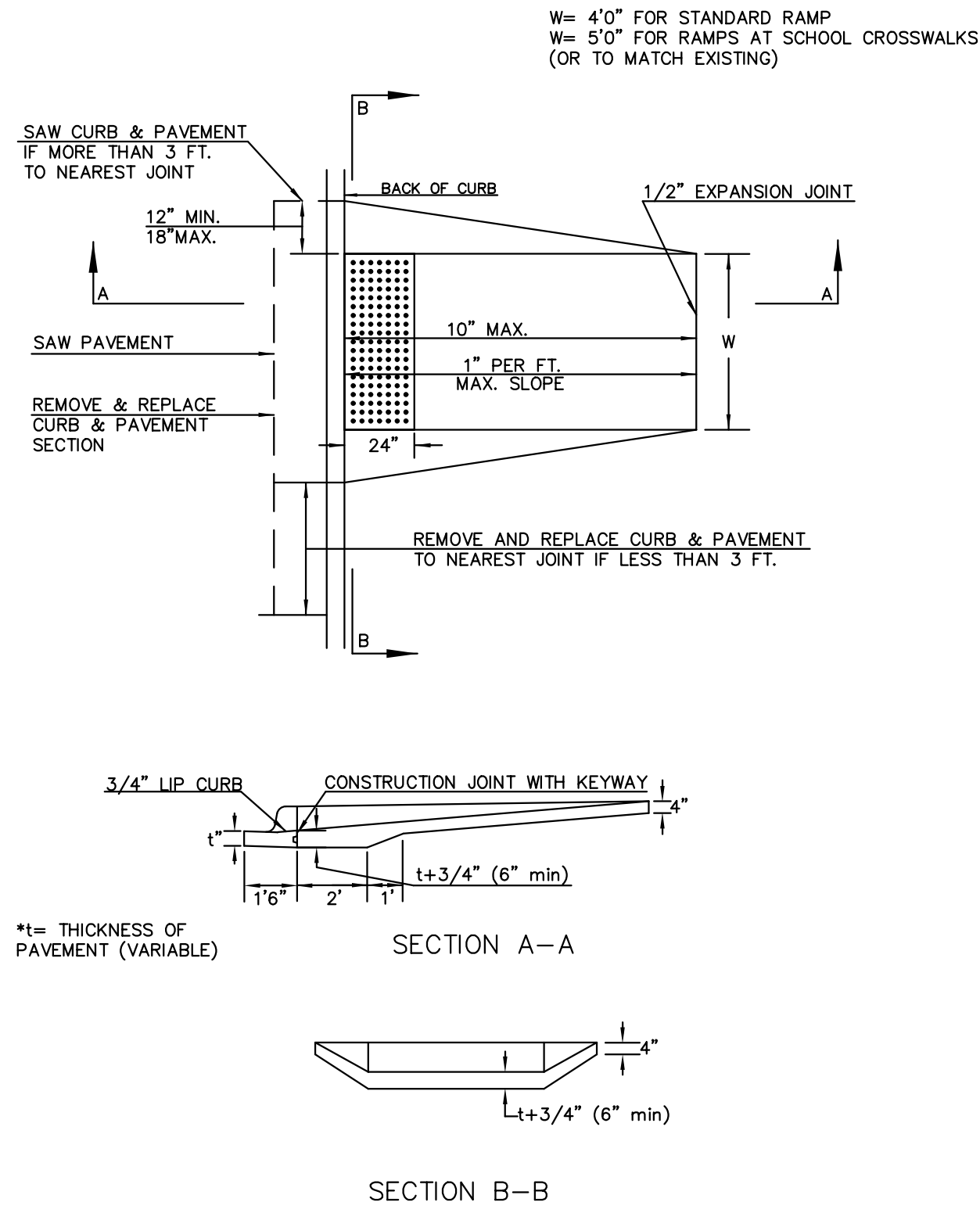


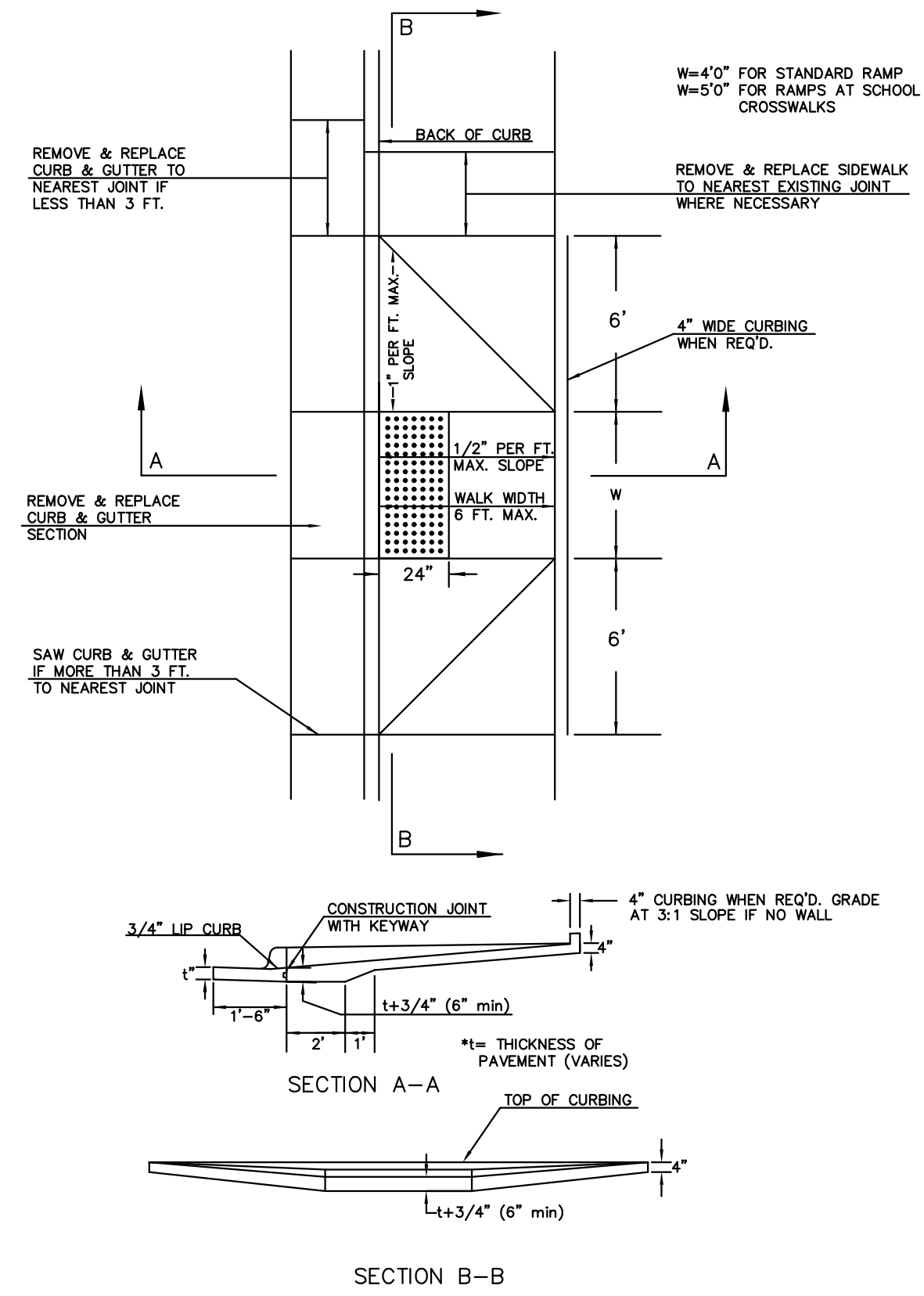
STANDARD WHEELCHAIR RAMP
CONSTRUCTION DETAIL FOR STREETS
WITH COMBINED CURB & GUTTER
(TYPE A)



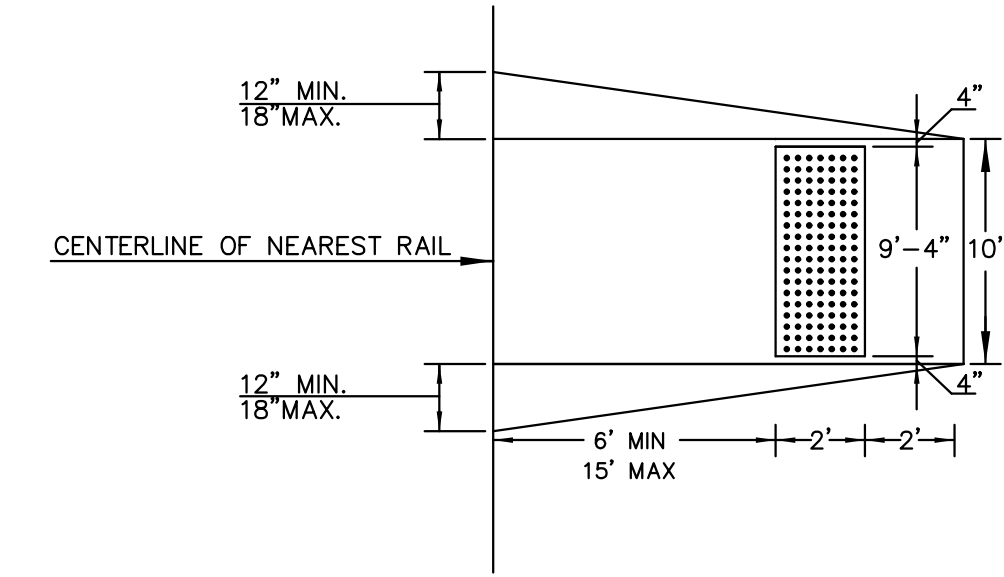
STANDARD WHEELCHAIR RAMP CONSTRUCTION DETAIL FOR
CONCRETE STREETS WITH MONOLITHIC CURB
(TYPE A)



STANDARD WHEELCHAIR RAMP CONSTRUCTION DETAIL FOR
STREETS WITH COMBINED CURB & GUTTER AND FULL WALK
(TYPE B)

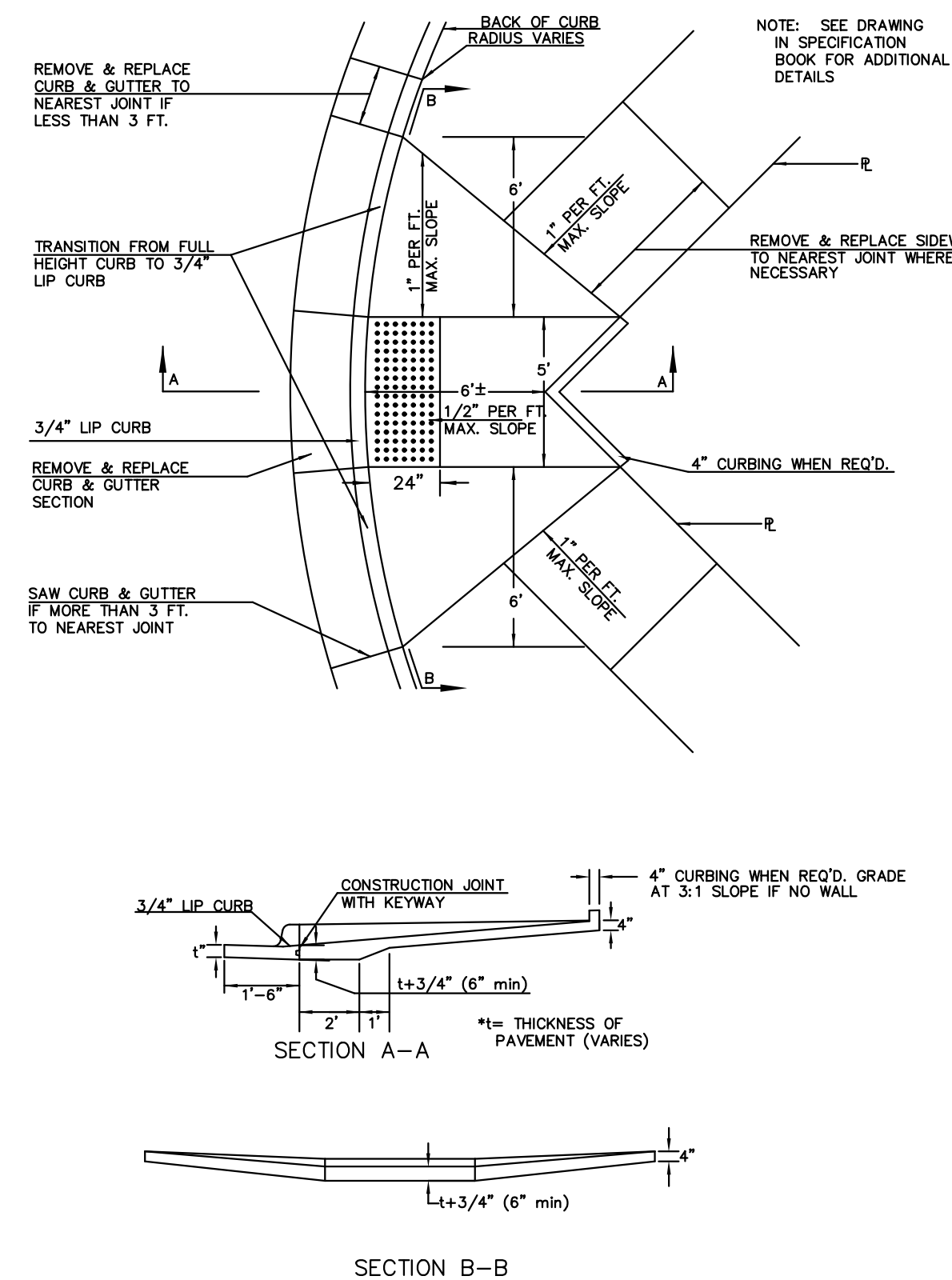


STANDARD WHEELCHAIR RAMP
CONSTRUCTION DETAIL FOR
RAILROAD CROSSINGS

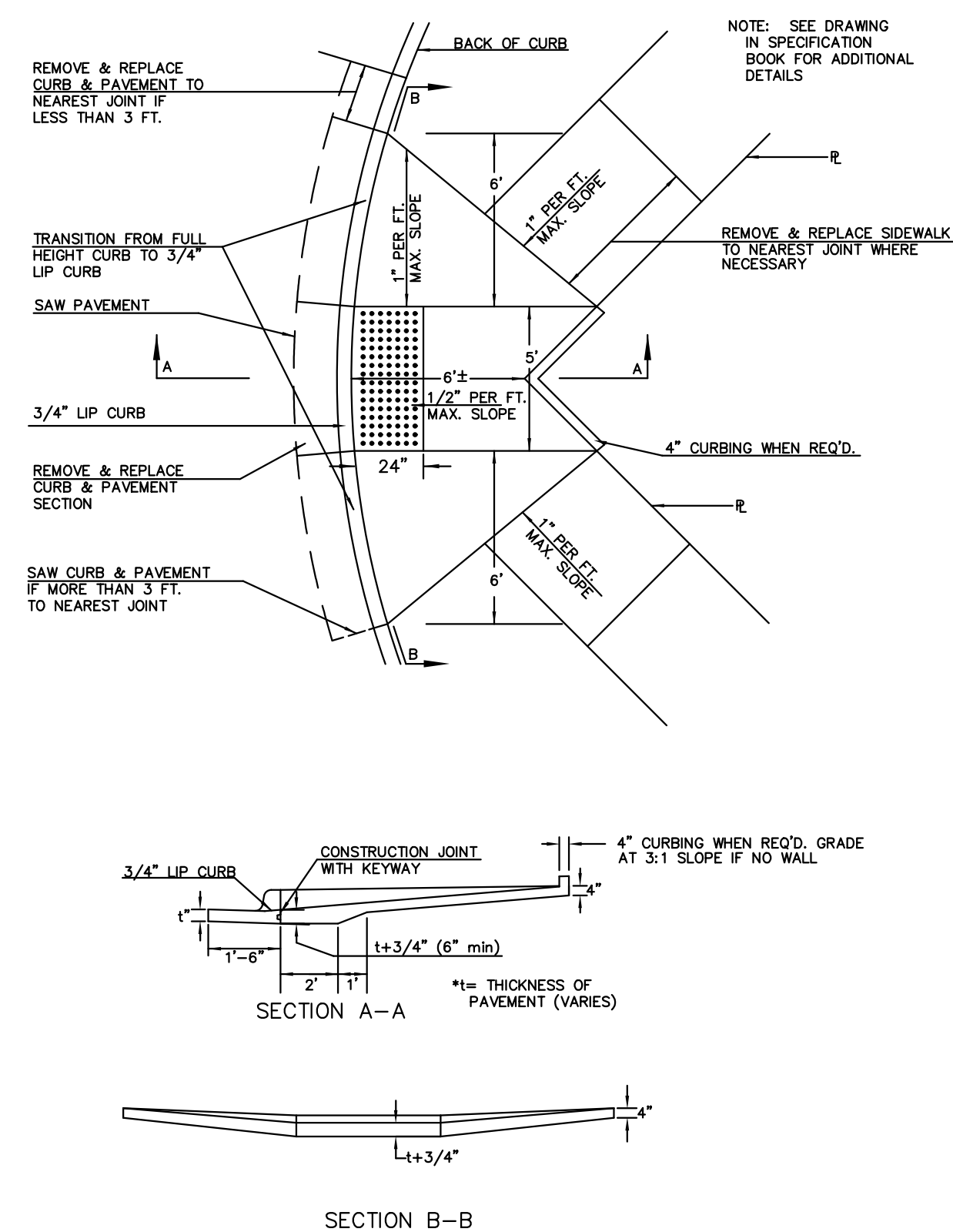


FOR CROSS SECTION DETAILS AT RAILROAD CROSSINGS, SEE SHEET 10

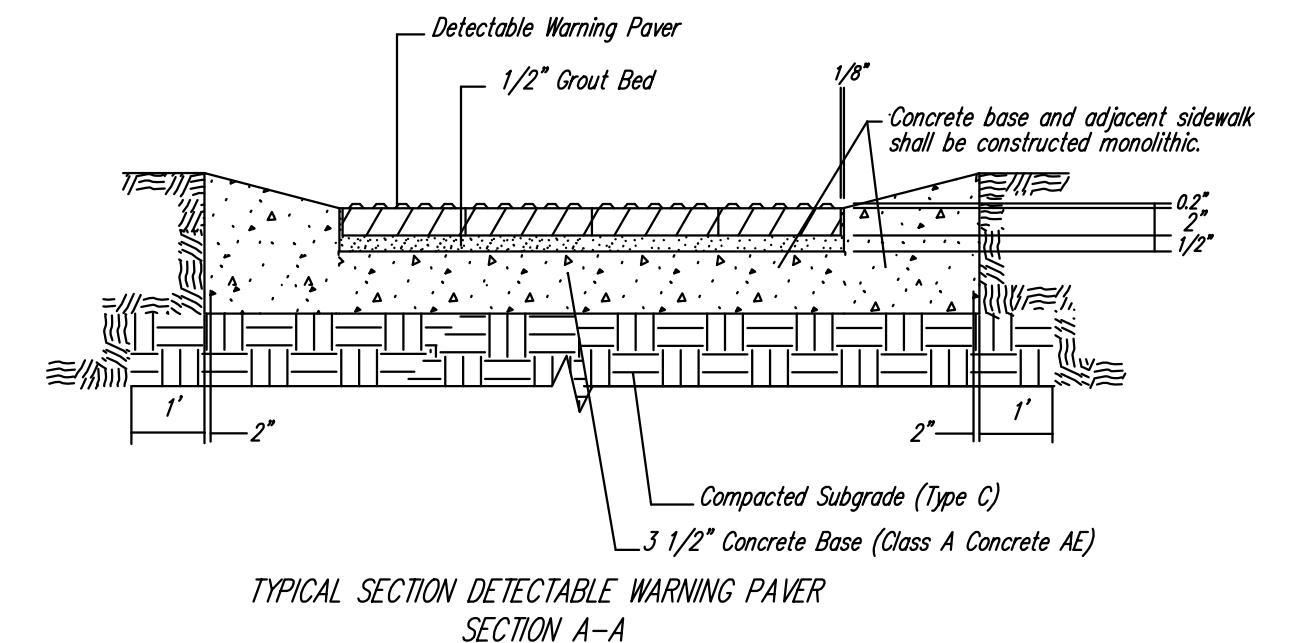
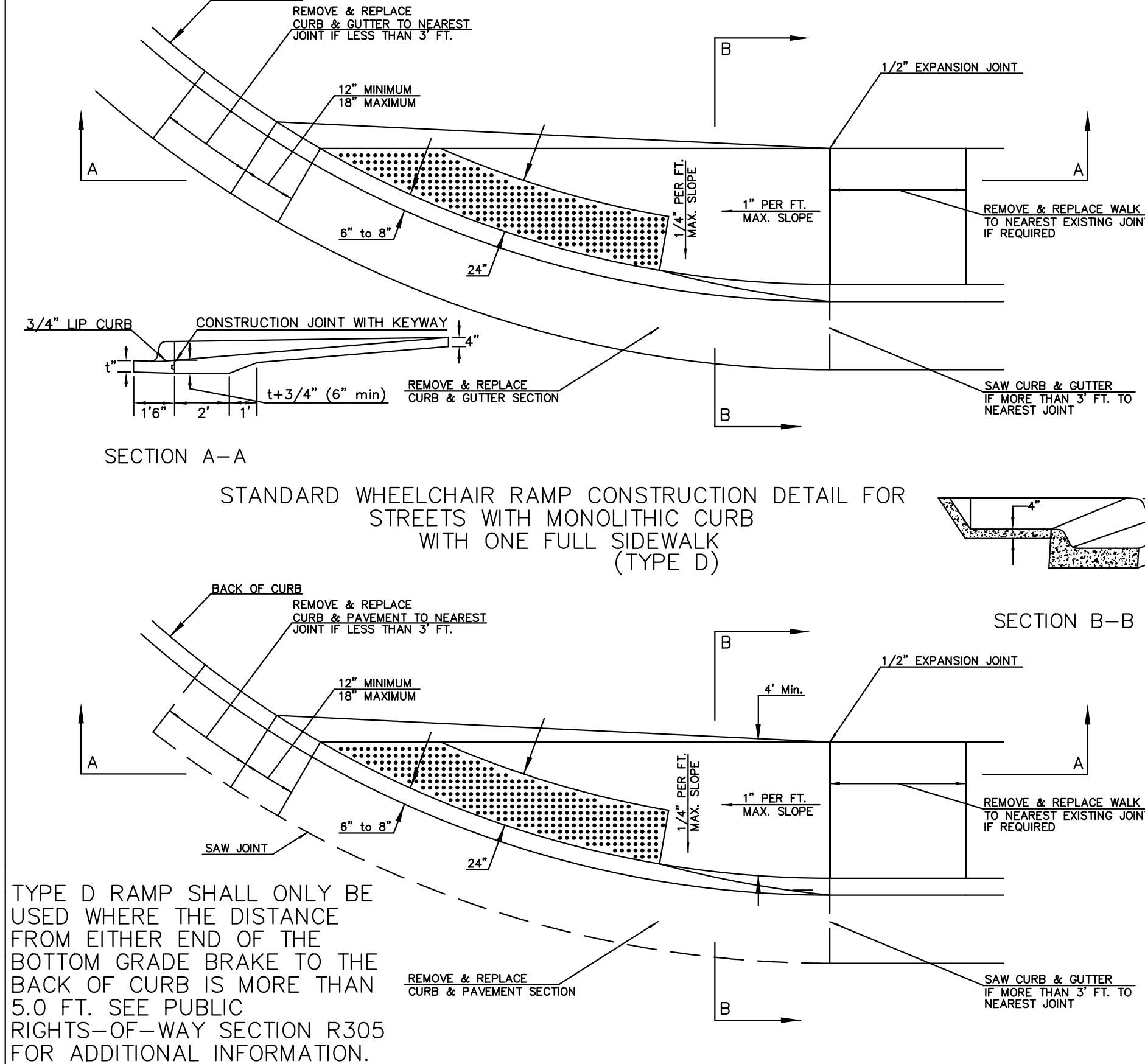
STANDARD WHEELCHAIR RAMP CONSTRUCTION DETAIL FOR
STREET WITH COMBINED CURB AND GUTTER ON RADIUS
WITH 6'± FROM BACK OF CURB TO PROPERTY CORNER
(TYPE C)



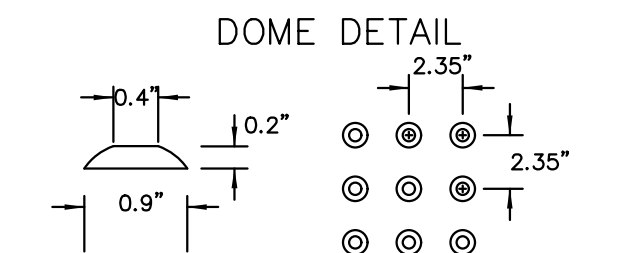
STANDARD WHEELCHAIR RAMP CONSTRUCTION DETAIL FOR
STREET WITH MONOLITHIC CURB ON RADIUS
WITH 6'± FROM BACK OF CURB TO PROPERTY CORNER
(TYPE C)



STANDARD WHEELCHAIR RAMP CONSTRUCTION DETAIL FOR
STREETS WITH COMBINED CURB & GUTTER
WITH ONE FULL SIDEWALK
(TYPE D)



NOTE: HANOVER DETECTABLE WARNING PAVERS (OR AN APPROVED ALTERNATE) SHALL BE USED IN ALL WHEELCHAIR RAMPS. THE 11 3/4\"/>



WHEELCHAIR RAMP DETAILS WITH DETECTABLE WARNING		
CITY ENGINEER GARY JANZEN, P.E.		
PROJECT NUMBER 472-85394	OCA NUMBER 707128	DATE 9/30/2020
CITY ENGINEER'S OFFICE CITY HALL - SEVENTH FLOOR 455 NORTH MAIN STREET WICHITA, KANSAS 67202-1620 (316) 268-4501		SHEET 9 OF 44

Plotted : 30-SEP-2020 20:32

Drawn By : Road
File : C-DET-PV110.dgn