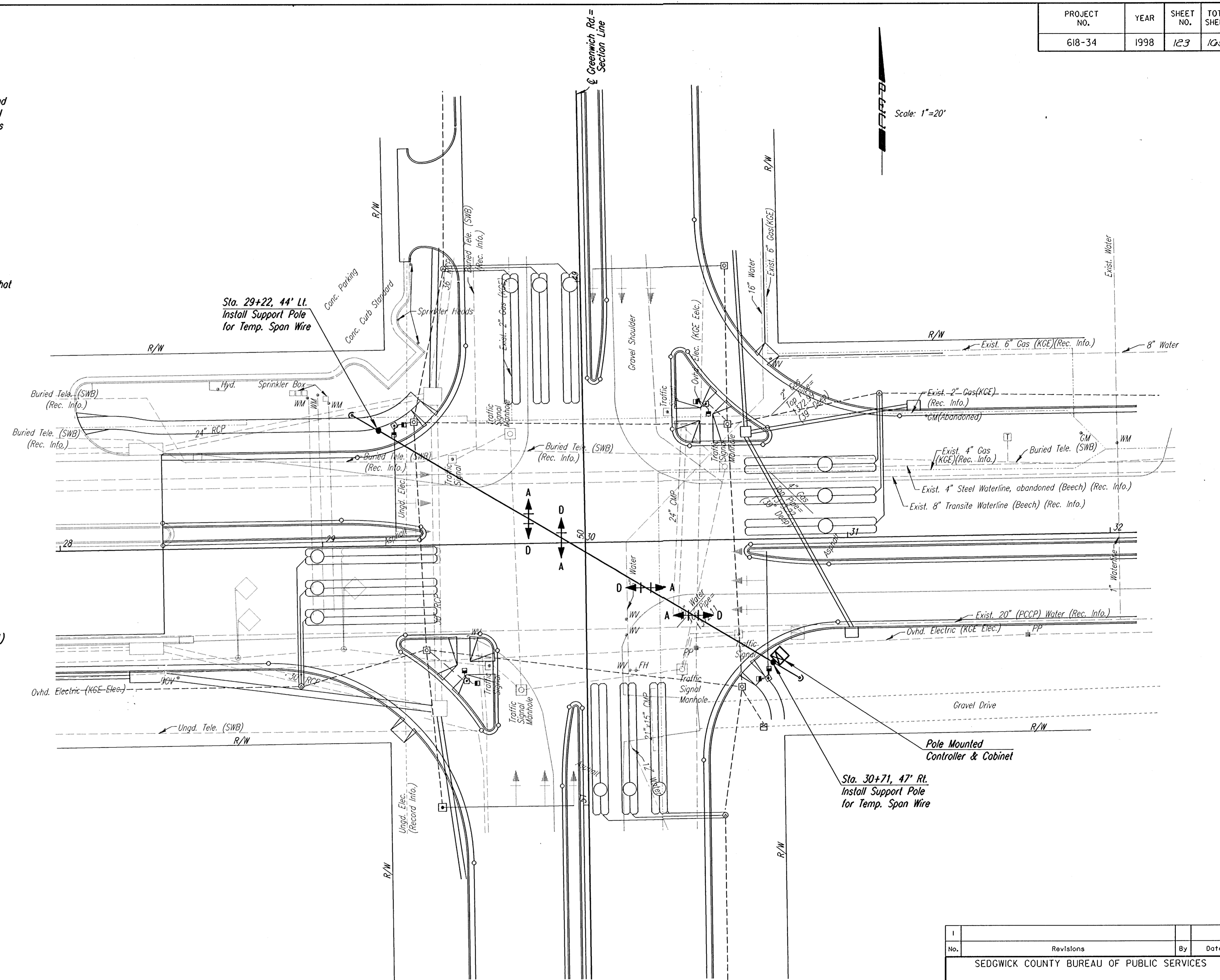


PROJECT NO.	YEAR	SHEET NO.	TOTAL SHEETS
618-34	1998	123	100

TEMPORARY SIGNAL GENERAL NOTES

- Contractor is to provide and maintain a temporary traffic signal at the intersection of Central Ave. and Greenwich Rd. during stages II and III of construction. During stages when existing or proposed signal head supports cannot be used for temporary supports, signal heads shall be mounted from span wires and/or temporary poles as shown on the plan - this sheet.
- All wiring installed shall conform to the National Electrical Code as well as local ordinances and requirements.
- All signal cable and feeder runs to be carried overhead on span wire across roadways or in conduit under the roadways.
- The operation and maintenance of the signal systems shall be the responsibility of the contractor.
- All signal indications, clearances, and sequences shall be in accordance with the current M.U.T.C.D.
- The traffic signal heads shall be adjusted on the span wire for each stage of traffic handling such that the appropriate signal head shall be in line with their appropriate lane. The contractor shall provide enough control wire such that no wire splices will be required during any stage.
- The temporary traffic signals shall be included in the bid item "Traffic Signal Installation (Temporary) - Lump Sum".
- The temporary traffic signals shall be switched on during an off-peak hour. When switching signals, flaggers will be required.
- The terminal blocks shall be in a weatherproof enclosure.
- The contractor shall supply and install all necessary materials and equipment for the complete installation and operation of the traffic signal system whether specifically mentioned or not.
- Traffic signal heads which are in place and not in use during a specific stage shall be removed, or covered with an opaque material.
- Signal phasing and timing shall be as directed and approved by the Engineer-in-Charge of construction.
- The traffic signal controller supplied shall be a fully actuated, 8-phase NEMA controller capable of 4-phase, 3-dial pre-timed operation.
- In case of signal malfunction, the contractor must respond within one hour.
- Support Pole locations may have to be adjusted in the field to clear existing utilities at the time of construction.
- Contractor shall contact Mark Borst, P.E. at the Sedgwick County Bureau of Public Service (383-7901) prior to beginning work that affects the Traffic Signal at Central and Greenwich Rd.



Scale: 1"=20'

1:/1995/95297/002/signtr.dgn
 Drawn by: MAF
 Plotted by: JGP 8-19-97

No.	Revisions	By	Date
SEDGWICK COUNTY BUREAU OF PUBLIC SERVICES TEMPORARY SIGNAL CENTRAL AVE. & GREENWICH ROAD PROJECT NO. 618-34 SEDGWICK COUNTY PROFESSIONAL ENGINEERING CONSULTANTS, P.A. ENGINEERS WICHITA, KANSAS			
Designed by	RPG	Checked by	WDH
Drawn by	MAF	Date	JULY 1997
		Job No.	95297-2