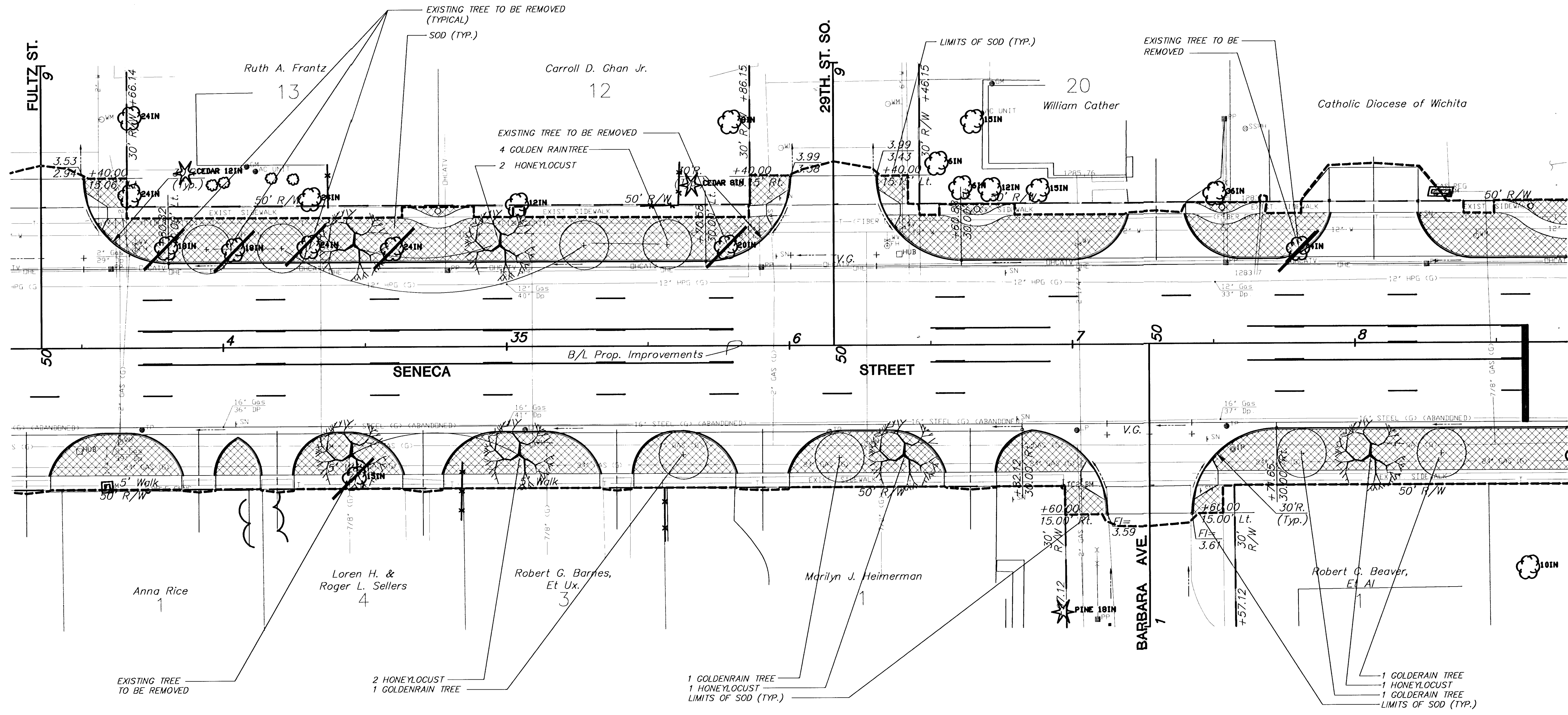
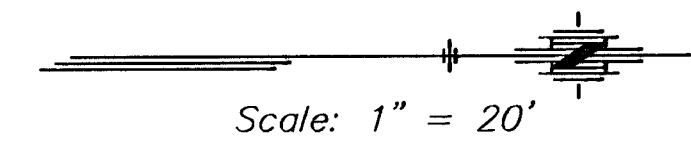


FHWA REG NO.	STATE	PROJECT NO.	YEAR	SHEET NO.	SHEETS
7	KANSAS	472-83084	2000	4	8



PER-SHEET LANDSCAPE BID QUANTITIES

QTY.	BOTANICAL NAME	COMMON NAME	SIZE	ROOT
6	GLEDITSIA TRIACANTHOS VAR. INERMIS CV. IMPERIAL	IMPERIAL HONEYLOCUST	2"-2 1/2" CAL.	B&B
8	KOELREUTERIA PANICULATA	GOLDENRAIN TREE	2"-2 1/2" CAL.	B&B

UTILITY OWNERS

- G - Kansas Gas Services (316)832-3169
- W - City of Wichita Water & Sewer Department (316)268-4908
- T - Southwestern Bell Telephone Co. (800)734-7590
- E - Kansas Gas and Electric (316)832-3180
- CATV - Cox Communications (316)262-4270
- SS - City of Wichita Water & Sewer Department (316)268-4908
- SWS - City of Wichita Water & Sewer Department (316)268-4908

BM #3 "I" cut on top of Residential border curb @ SE cor. Barbara and Seneca. Sta. 36+96.54 50.30' Rt. Elev.=1285.07

KANSAS DEPARTMENT OF TRANSPORTATION

**SOUTH SENECA STREET
33+50 TO 38+50
LANDSCAPE PLANTING**

PROJECT NO. 472-83084 SEDGWICK CO.

MID-KANSAS ENGINEERING CONSULTANTS, INC.
WICHITA, KANSAS

DESIGNED BY: LME CHECKED BY: GJA
DRAWN BY: DATE: MAY 1, 2000 SHEET 4 OF 8

H:\CT\1\SENECA\94005-2\LANDSCAP\94005L3R.DWG Fr: Apr 28 11:50:49 2000

94005L3