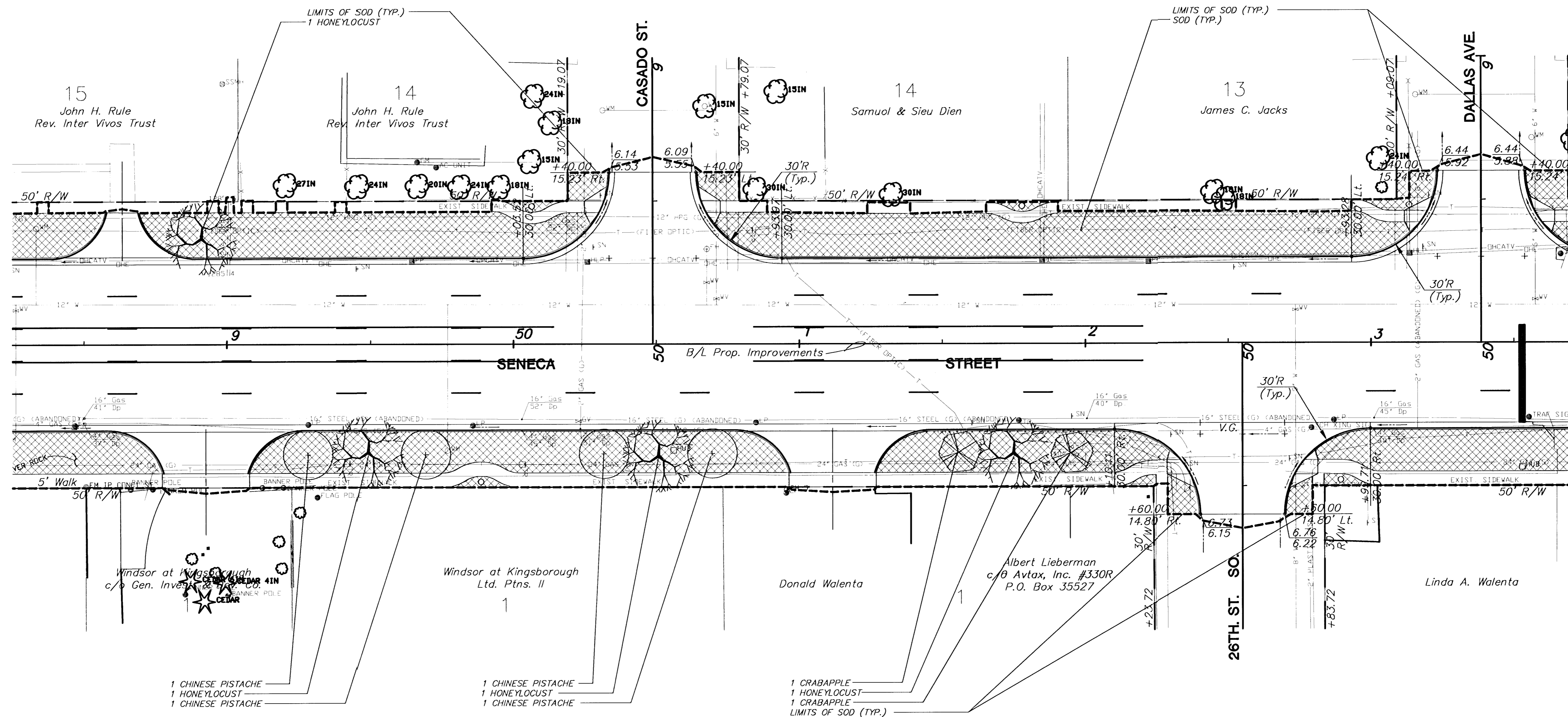
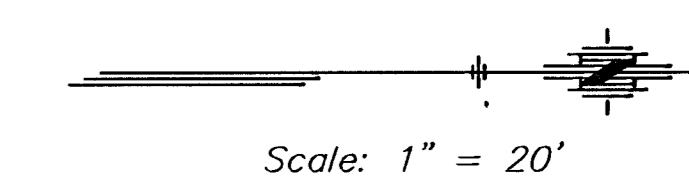


FHWA REG NO.	STATE	PROJECT NO.	YEAR	SHEET NO.	SHEETS
7	KANSAS	472-83084	2000	7	8



PER-SHEET LANDSCAPE BID QUANTITIES

QTY.	BOTANICAL NAME	COMMON NAME	SIZE	ROOT
4	CLEDITSIA TRIACANTHOS VAR. INERMIS CV. IMPERIAL	IMPERIAL HONEYLOCUST	2"-2 1/2" CAL.	B&B
2	MALUS CV. SNOW DRIFT	SNOW DRIFT CRABAPPLE	2"-2 1/2" CAL.	B&B
4	PISTACIA CHINENSIS	CHINESE PISTACHE	2"-2 1/2" CAL.	B&B

BM #5 "I" cut on the West side conc. light pole base. Sta. 50+95.53
51.16' Rt. Elev.=1288.14

UTILITY OWNERS

- G - Kansas Gas Service (316)832-3169
- W - City of Wichita Water & Sewer Department (316)268-4908
- T - Southwestern Bell Telephone Co. (800)734-7590
- E - Kansas Gas and Electric (316)832-3180
- CATV - Cox Communications (316)262-4270
- SS - City of Wichita Water & Sewer Department (316)268-4908
- SWS - City of Wichita Water & Sewer Department (316)268-4908

KANSAS DEPARTMENT OF TRANSPORTATION

**SOUTH SENECA STREET
48+60 TO 53+60
LANDSCAPE PLANTING**

PROJECT NO. 472-83084 SEDGWICK CO.

MID-KANSAS ENGINEERING CONSULTANTS, INC.
WICHITA, KANSAS

DESIGNED BY: LME	CHECKED BY: GJA
DRAWN BY:	DATE: MAY 1, 2000 SHEET 7 OF 8