

PHASE 1

PAVING PLANS FOR

# SOUTH SENECA

From N.L. of 48th. St. So. to 400' N of N.Line of MacArthur Rd.

&

47th. St. So. from 400'W. to 590'E. of C Seneca

&

MacArthur Rd. from 400' W. to Seneca

## PROJECT NO.

# 472-76-245-82009-000-000-001

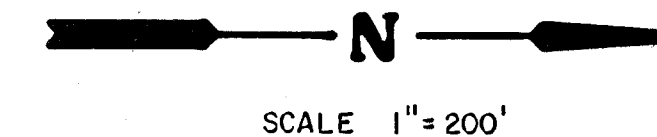
INDEX TO DRAWINGS

Sheet No.	Description
1	Title Sheet
2	General Notes
3	Typical Sections
4	Intersection Details
5-11	Paving Plans
12	Standard Drive Entrances
13	Type 1A Inlet Hookup Details
14	Drop Inlet Details
15-17	Pavement Marking & Signing
18-25	Traffic Signalization
28-41	Paving Cross Sections
25-A	Project Information Sign Detail

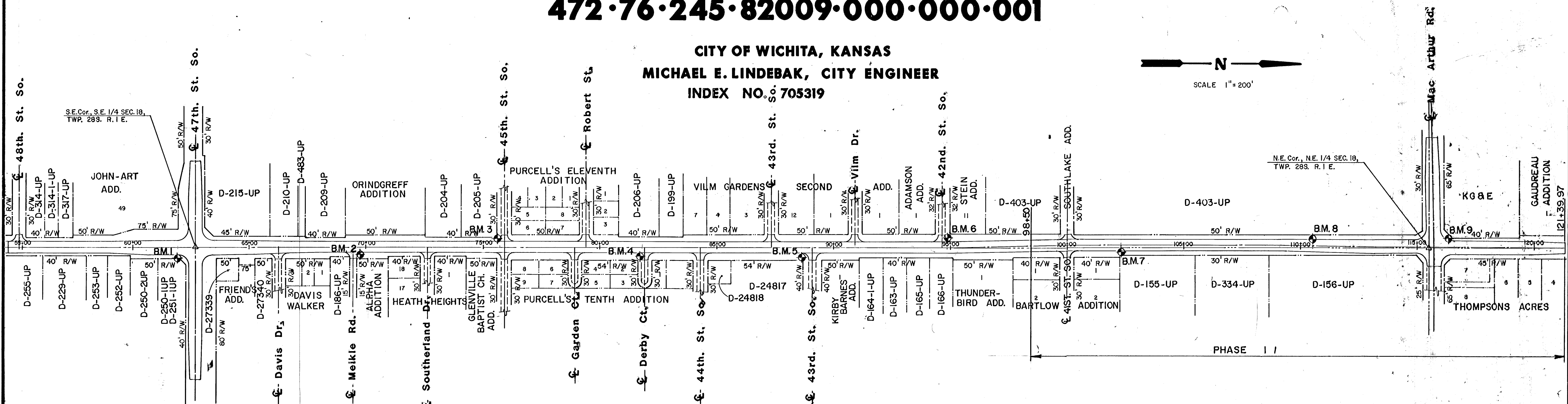
CITY OF WICHITA, KANSAS

MICHAEL E. LINDEBAK, CITY ENGINEER

INDEX NO. 705319



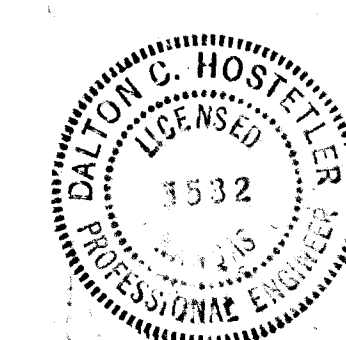
SCALE 1" = 200'



### BENCHMARKS

- BM #1 C.O.W. B.M. Disc, Seneca & 47th St. S. 74' S & 44' E of CL's Elev. = 87.341
- BM #2 Near Sta. 69+60, 30' Right, Step nail in pole. Elev. = 89.44
- BM #3 Near Sta. 73+68, 30' Left, Step nail in pole. Elev. = 88.55
- BM #4 Near Sta. 81+78, 30' Right, Step nail in pole. Elev. = 89.86
- BM #5 C.O.W. B.M. Disc, Seneca & 43rd St. S. 48' E & 42.8' S of CL's Elev. = 88.008
- BM #6 Near Sta. 94+89, 30' Left, Step nail in pole. Elev. = 89.83
- BM #7 Near Sta. 102+30, 28' Right, Step nail in pole. Elev. = 90.75
- BM #8 Near Sta. 110+50, 30' Left, Step nail in pole. Elev. = 93.40
- BM #9 C.O.W. B.M. Disc, Seneca & MacArthur Road 86' N & 29.5' W of Sec. Cor. Elev. = 90.370

*Strm Swr. Backed 11/92 MS*



	MKEC 12-9-91	Design
	<b>SOUTH SENECA IMPROVEMENTS</b>	Drawn by
<b>TITLE SHEET</b>		Checked by
48th. St. So. to MacArthur Rd.		Date
		June, 1991
		Job no.

MID-KANSAS ENGINEERING CONSULTANTS PA 3500 NORTH ROCK ROAD BUILDING #800 WICHITA, KANSAS 67226	636-5866	Sheet 1 of 41
---	----------	---------------