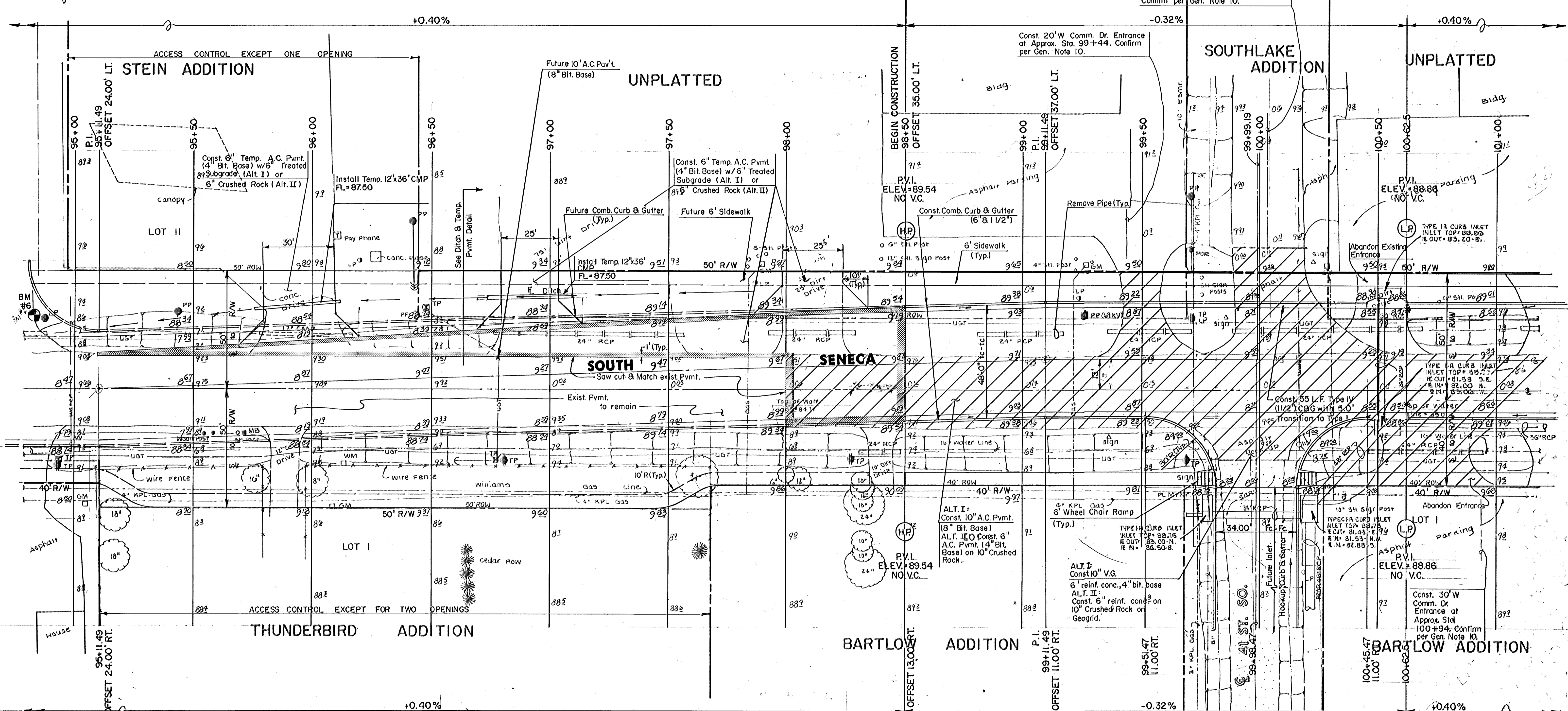




FUTURE PAVING IMPROVEMENTS

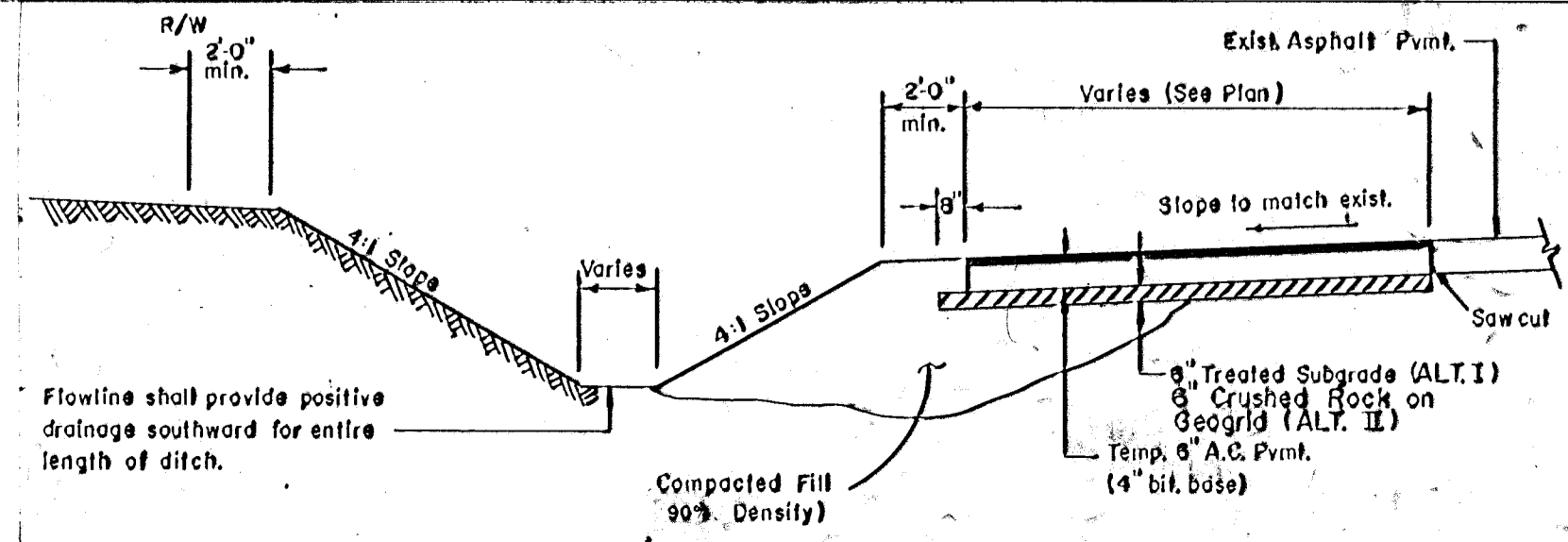
Construct 30' W Comm. Dr. Entrance at Sta. 100+03. Saw Cut & Match Existing Pvm't. Approx. 12' Behind R/W. Confirm per Gen. Note 10.

Scale: 1" = 20'



FIRE HYDRANT & WATER VALVE BOX ADJUSTMENT

STATION	OFFSET	PROP. ELEV.	NOTES
99+78	33' RT./37' RT.	Relocated By City	WV/FH
100+17	24' RT.	88.75	WV
103+40	25' RT.		AR
109+00	22' RT.	90.20	WV/FH
114+08	22' RT.	90.87	WV
115+43	18' RT.	91.53	WV
118+04	22' RT.	91.48	WV
118+13	22' RT.	Relocated By City	WV/FH
119+36	32' RT.	90.75	WV
119+36	30' LT.	Relocated By City	WV/FH



* For 2" depression, Subtract 0.31' from H.E. (0.17' from gutter E.)

EARTHWORK

	EXCAVATION	COMPACTED FILL
ALT. I	7304 C.Y.	182 C.Y.
	6" MANIPULATION =	14000 S.Y.
ALT. II	9092 C.Y.	182 C.Y.

SOUTH SENECA IMPROVEMENTS

PAVING PLAN

48TH ST. SO. TO MACARTHUR RD.

MID-KANSAS ENGINEERING CONSULTANTS PA
3500 NORTH ROCK ROAD
BUILDING #600
WICHITA, KANSAS 67226

636-6666

Design	
Drawn by	
Checked by	
Date	
Job no.	
Sheet	5
of	41