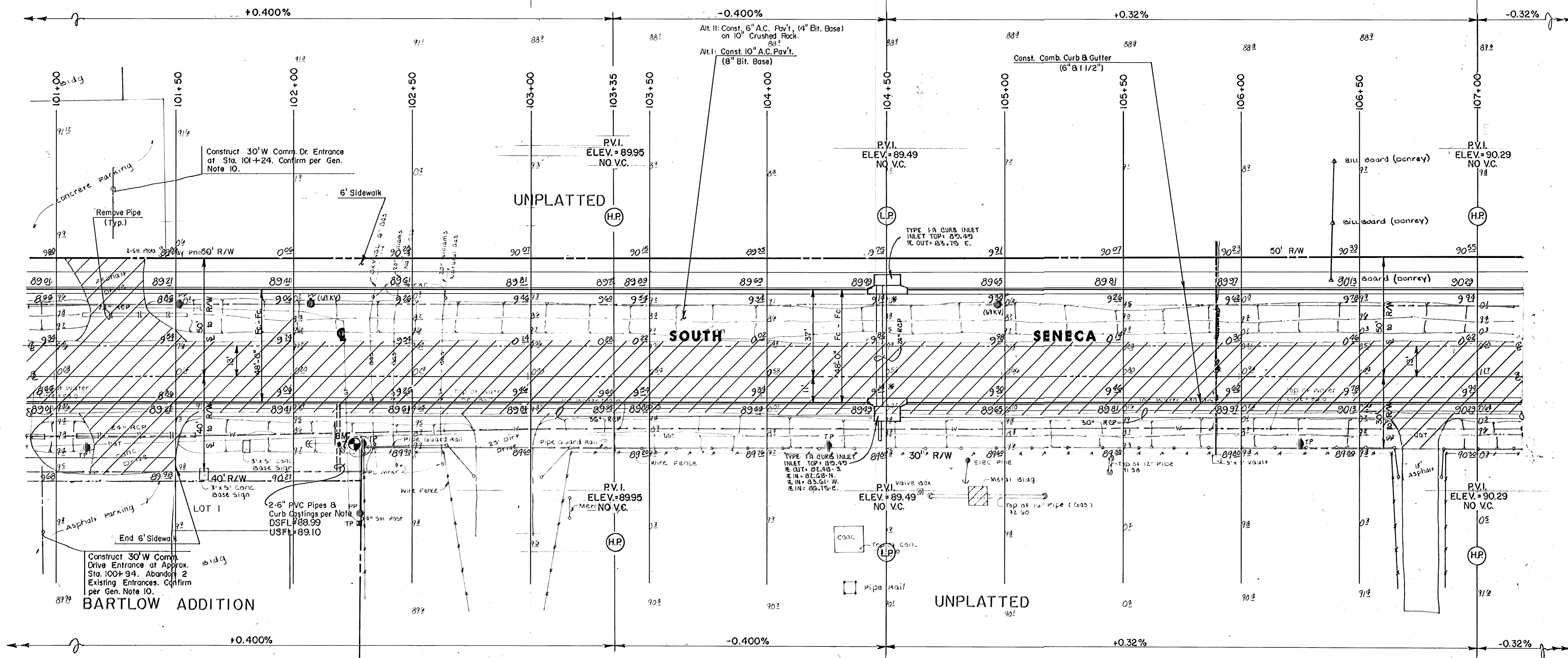
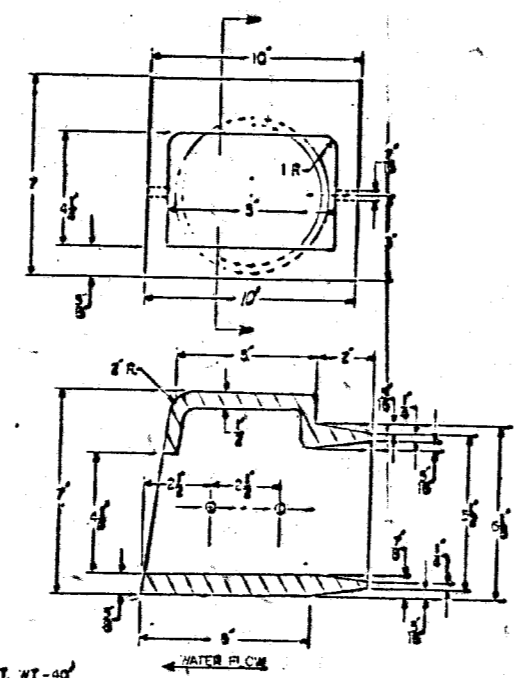


Scale: 1" = 20'



Note:
 Install 2 Curb Castings, Deeter #2449-6 or approved equal, at curb & gutter. Casting units shall be bolted & anchored with galvanized 3/8 x 1-3/4 # 2-1/2 bolts, respectively. Castings shall be painted two coats of grey paint, applied in accordance with manufacturer's recommendation.



CURB CASTING DETAIL

* For 2" Depression, subtract 0.31' from H.E. (0.17' from gutter R.L.)



SOUTH SENECA IMPROVEMENTS
PAVING PLAN
 48TH ST. SO. TO MACARTHUR RD.

MID-KANSAS ENGINEERING CONSULTANTS PA
 3500 NORTH ROCK ROAD
 BUILDING #800
 WICHITA, KANSAS 67228

Design	
Drawn by	
Checked by	
Date	
Job no.	
Sheet	6
	41

636-5566