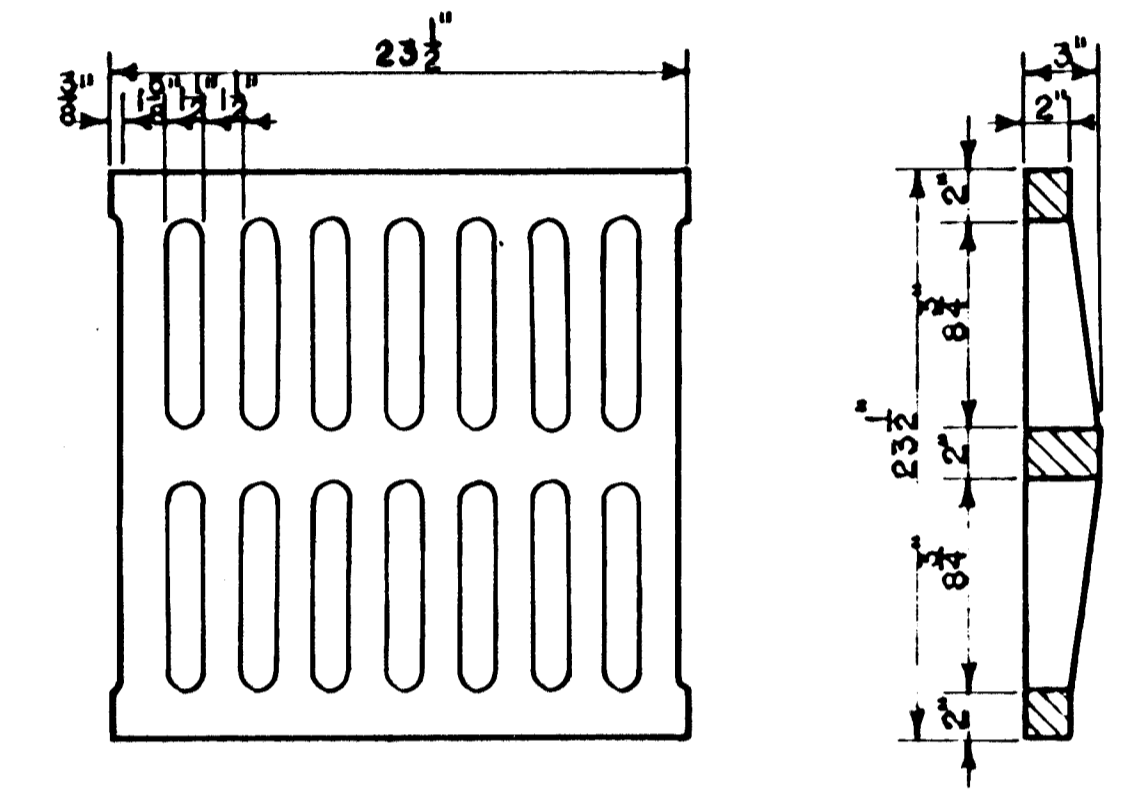
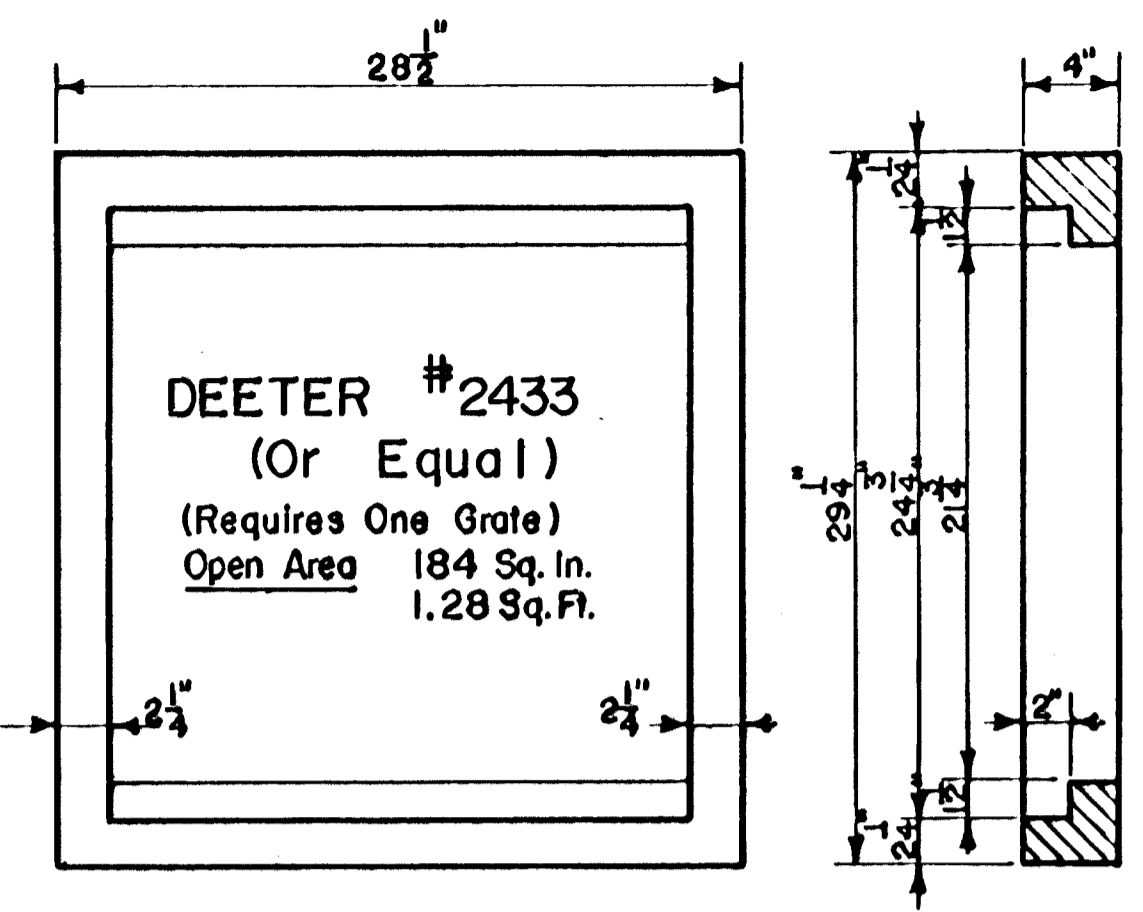
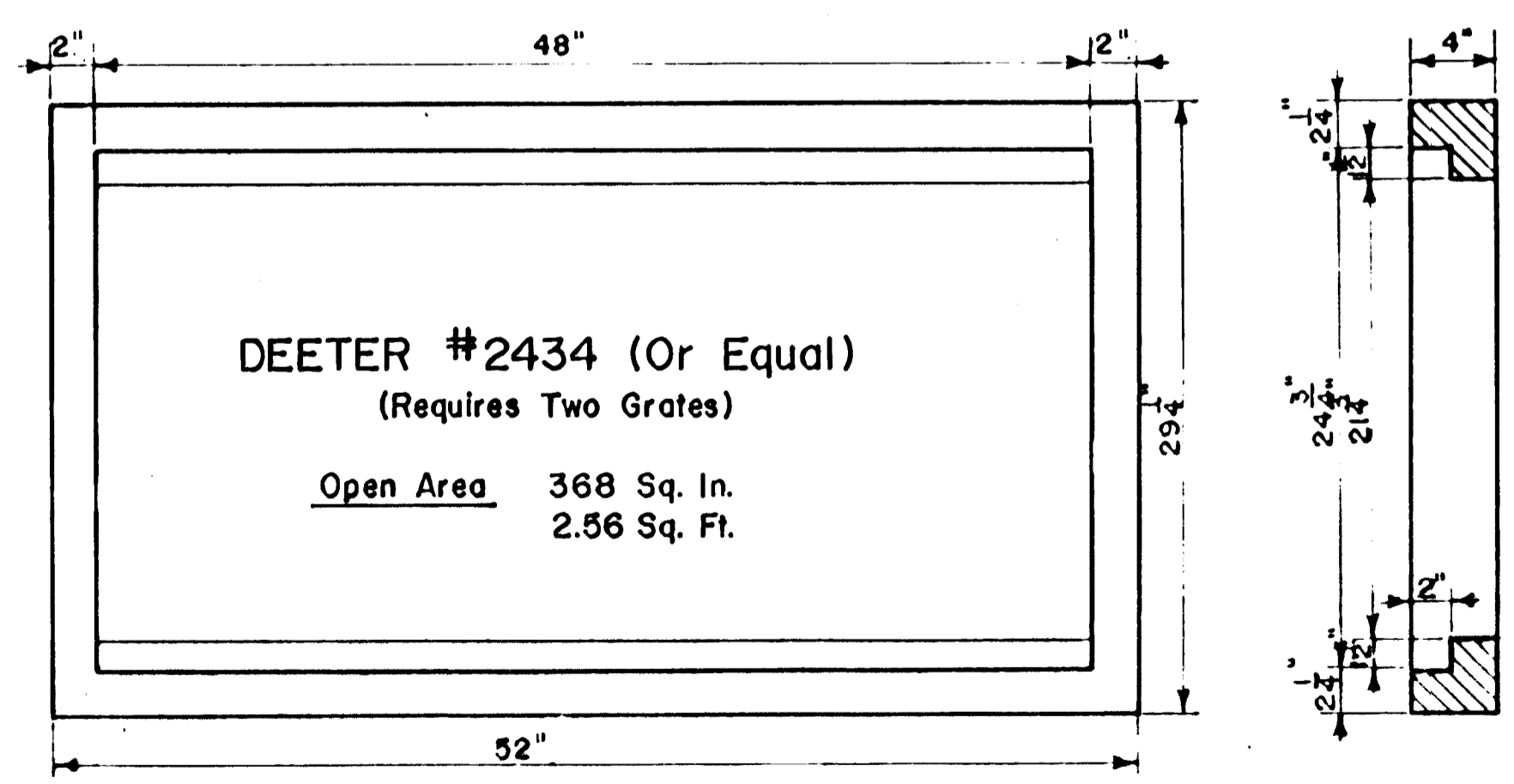


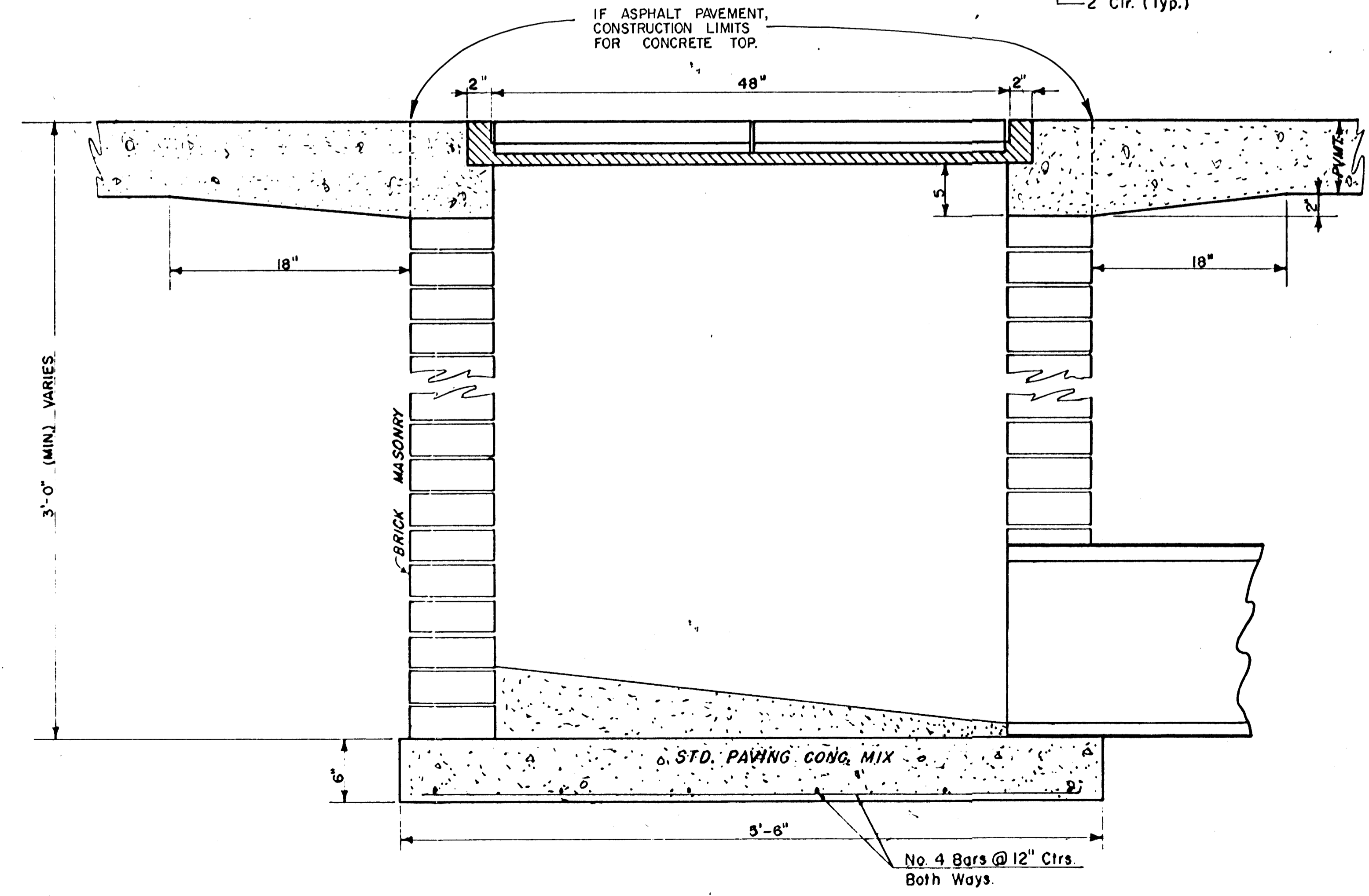
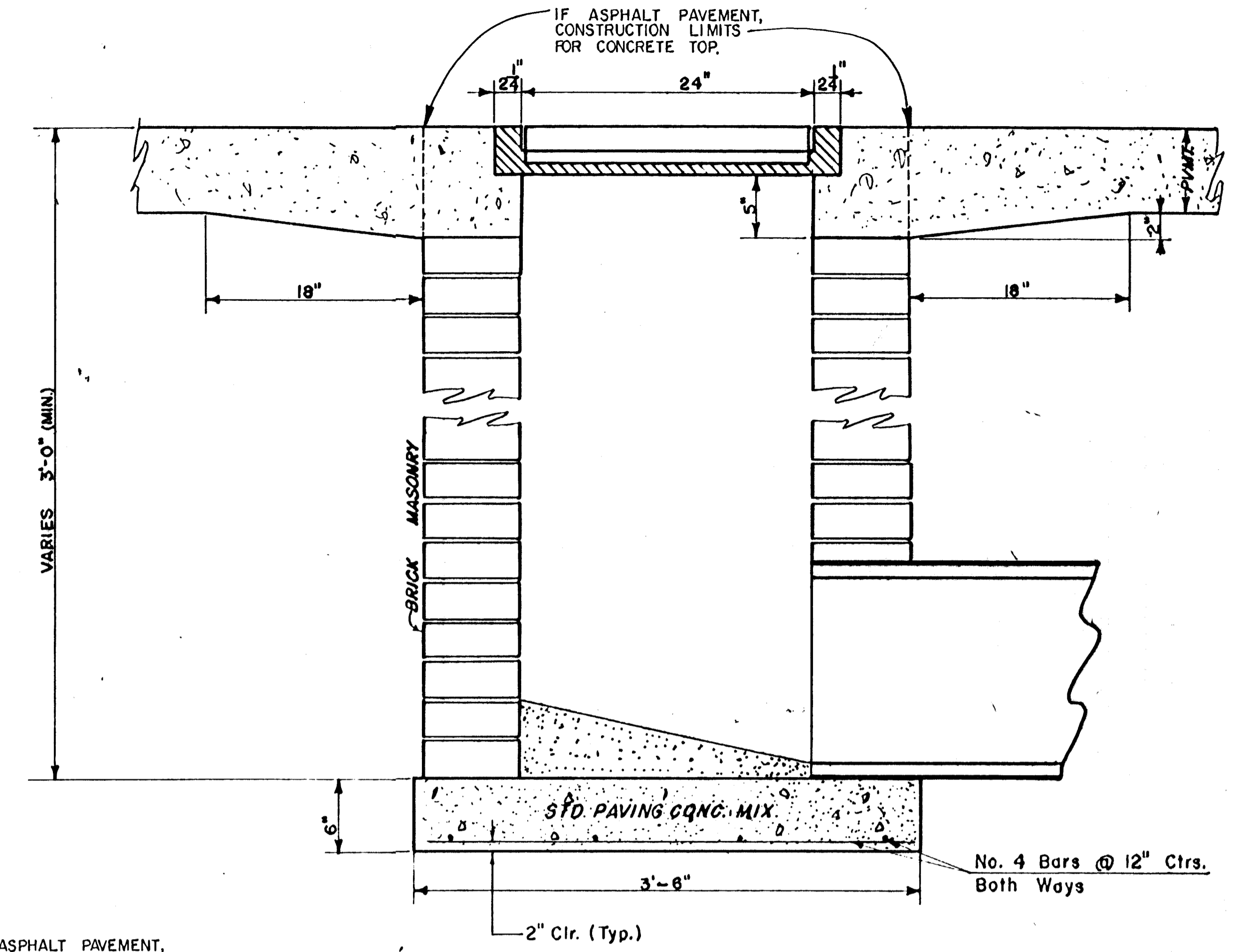
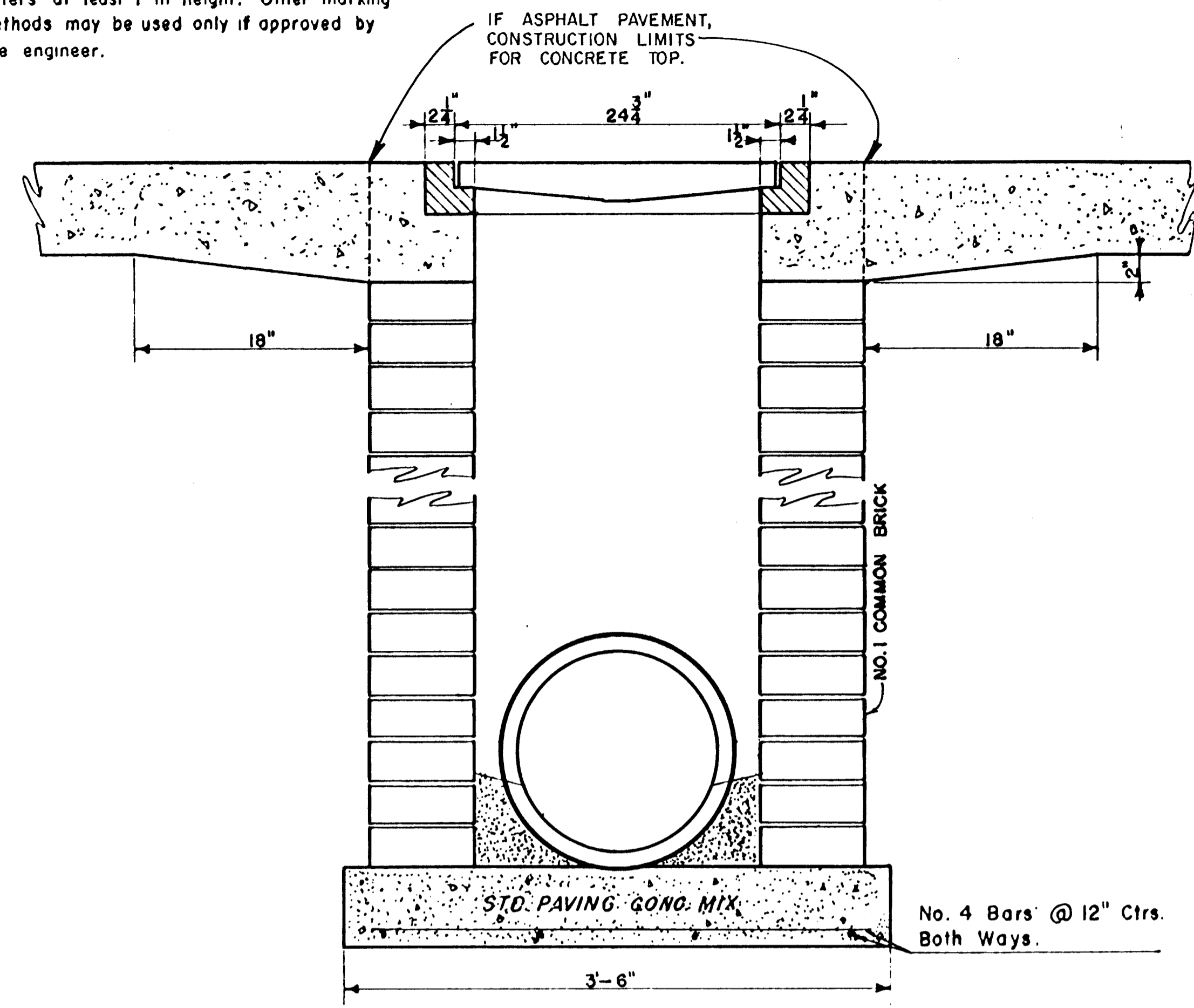
NOTE: Grates shall be imprinted on the top surface with "CITY OF WICHITA" using letters at least 1" in height. Other marking methods may be used only if approved by the engineer.



24"x24" Frame & Grate Detail



Double 24"x24" Frame Detail



ORIFICE EQUATION		
$Q = CA \sqrt{2gh}$ $C = 0.60$		
h (Depth)	#2433 (single)	#2434 (double)
0.1	1.95 cfs	3.89 cfs
0.2	2.75 cfs	5.50 cfs
0.3	3.37 cfs	6.74 cfs
0.4	3.89 cfs	7.78 cfs
0.5	4.35 cfs	8.70 cfs
0.6	4.77 cfs	9.53 cfs
0.7	5.15 cfs	10.30 cfs
0.8	5.50 cfs	11.01 cfs
0.9	5.84 cfs	11.67 cfs
1.0	6.15 cfs	12.30 cfs

REVISED: 8 MAY 1990 JNJ  
**DROP INLET DETAILS**  
 M.E. Lindebak, City Engineer  
 City of Wichita, Kansas  
 Project  
 Project No.  
 Date:  
 Scale: 1-1/2" = 1'-0"