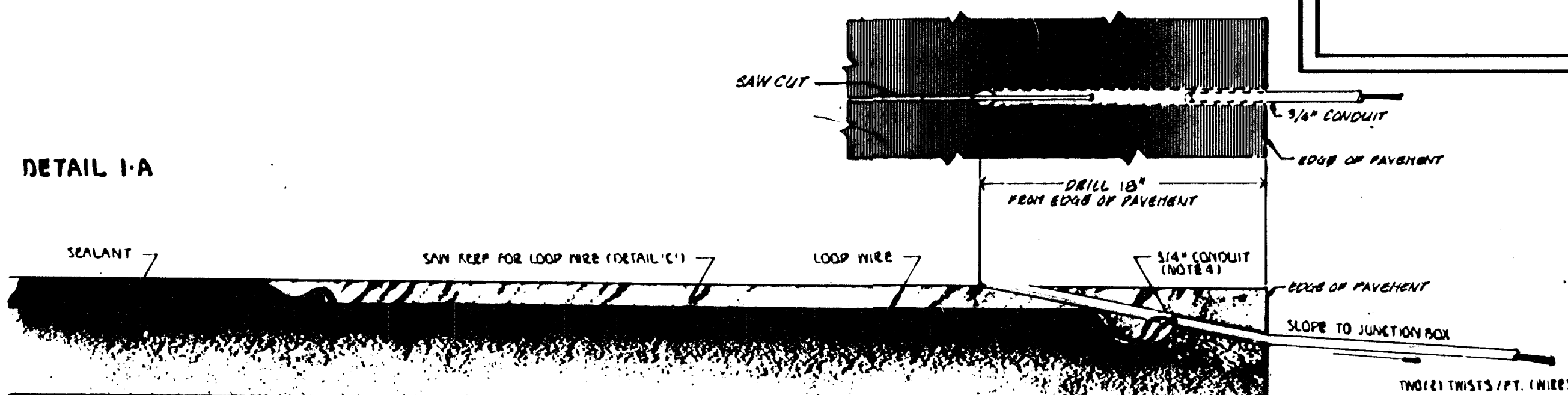
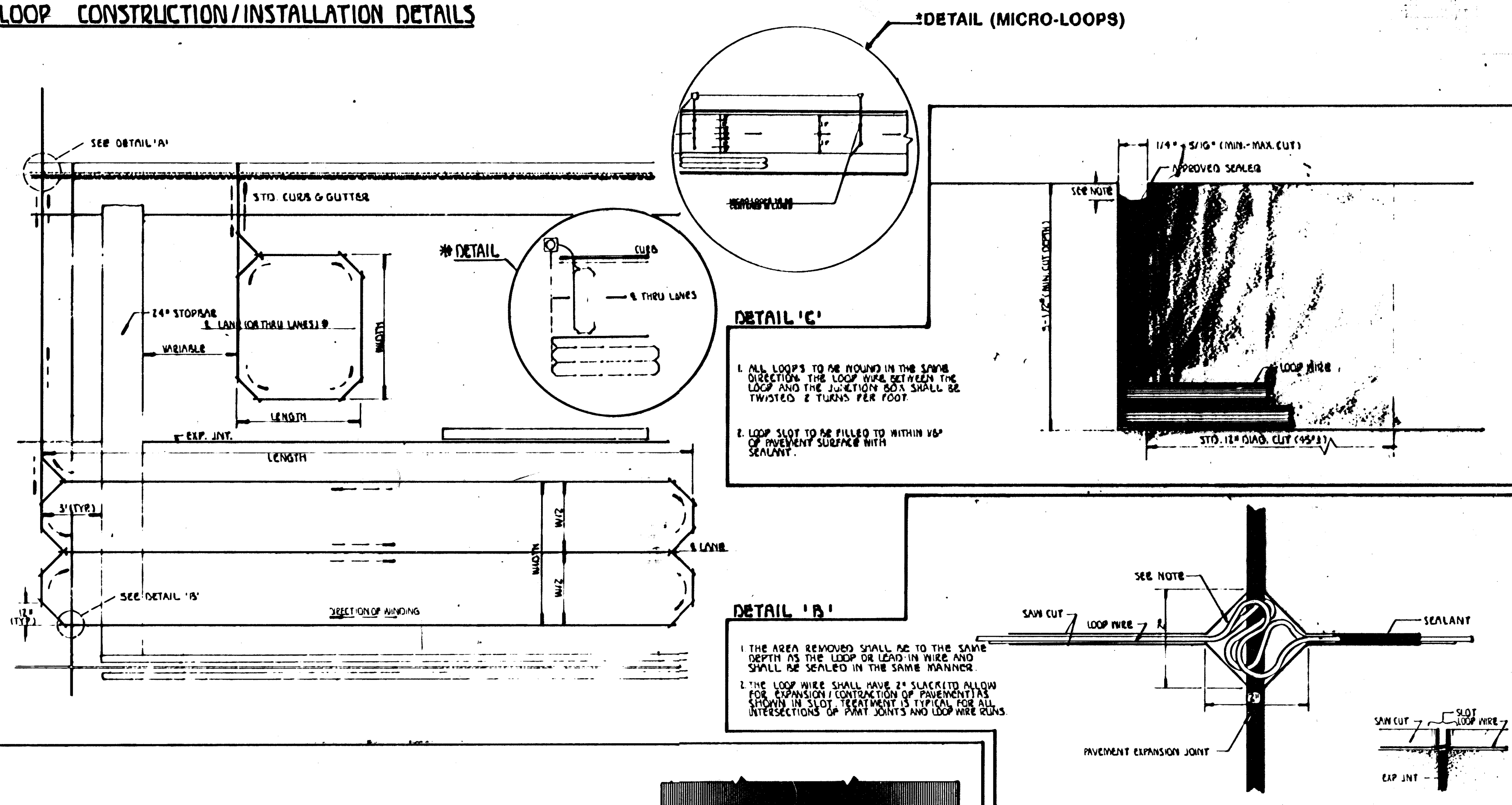


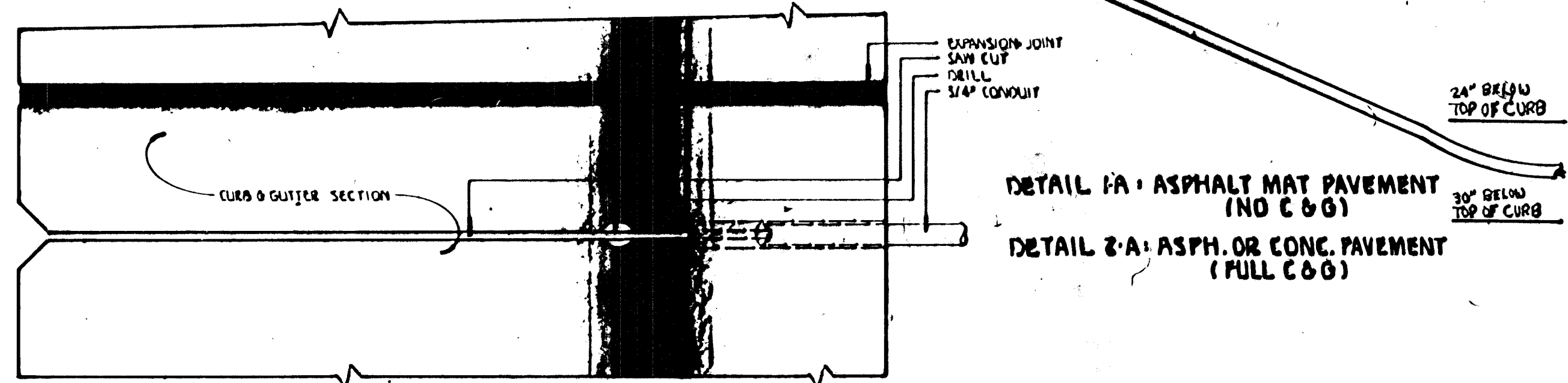
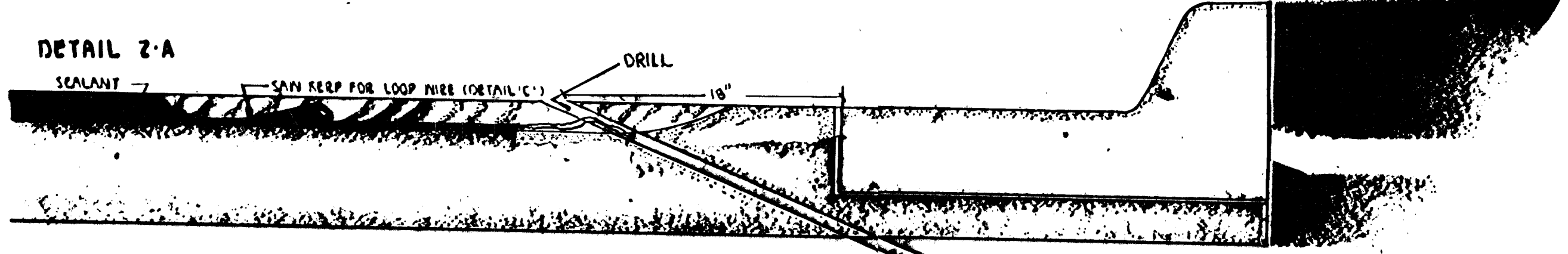
SIGNAL FACE ARRANGEMENT

SIGNAL 'B' IS PROGRAMMED TYPE (P).
 SIGNAL 'E' IS DUAL-MODE GREEN/YELLOW ARROW SECTION TYPE (d)
 SIGNAL 'K' IS TYPICAL 5-SECTION ARRANGEMENT USED BY C.O.F.W.
 (6" 3-SECT. w/12" ARROWS.)

LOOP CONSTRUCTION/INSTALLATION DETAILS



1. 3/4" CONDUIT TO BE INSTALLED INTO PAVEMENT 1/8" DOWN FROM SURFACE OF PAVEMENT.
2. THE CONDUIT (S4) SHALL SLOPE DOWNWARD FROM EDGE OF CURB (OR EDGE OF PAVEMENT) INTO THE JUNCTION BOX. SEE DETAIL 'B' FOR SERVICE JUNCTION BOX CONSTRUCTION/INSTALLATION FOR LOOP OF DETAILS.
3. NO EXPANSION JOINT IN THE PAVEMENT OR CURB & GUTTER SHALL BE UTILIZED IN THE PLACEMENT OF LOOP WIRE RUNS OR CONDUIT CONSIDERING YOU SHALL THE LOOP WIRE OR CONDUIT PASS THRU THE CURB & GUTTER OR EDGE OF PAVEMENT IN ANY PART OF ANY DRIVE APPROACH AND/OR CORNER DRIFT.
4. SEAL CONDUIT END WITH GUT SEAL TO PREVENT LOOP SEALANT FROM ENTERING CONDUIT.



- NOTES:**
1. LOOP WIRE CONDUIT SHALL BE MINIMUM 12" FROM ANY OTHER LOOP WIRE CONDUIT.
 2. SAW CUT RUNNING PARALLEL WITH EXPANSION JOINT OR ANY OTHER SAW CUT SHALL BE MINIMUM 12" APART.
 3. a. Loops - 25' or less - 4 turns
 b. Loops - over 25' - 3 turns
 c. Quad Loops - 2-4-2 turns

REV DATE	COMMENTS	BY

PROJECT DESCRIPTION
SIGNAL FACE ARRANGEMENT / LOOP DETECTOR CONSTRUCTION AND INSTALLATION DETAILS

PROJECT NUMBER

BOOK NO. APPROVED BY DATE **SEPT 03**

DRAWN BY **SEAL** REVISION

CITY OF WICHITA
 DEPARTMENT OF PUBLIC WORKS

TRAFFIC ENGINEERING

WIM & MCKINLEY: TRAFFIC ENGINEER

SCALE: **4-1**
 DO NOT SCALE FOR INFORMATION ONLY.