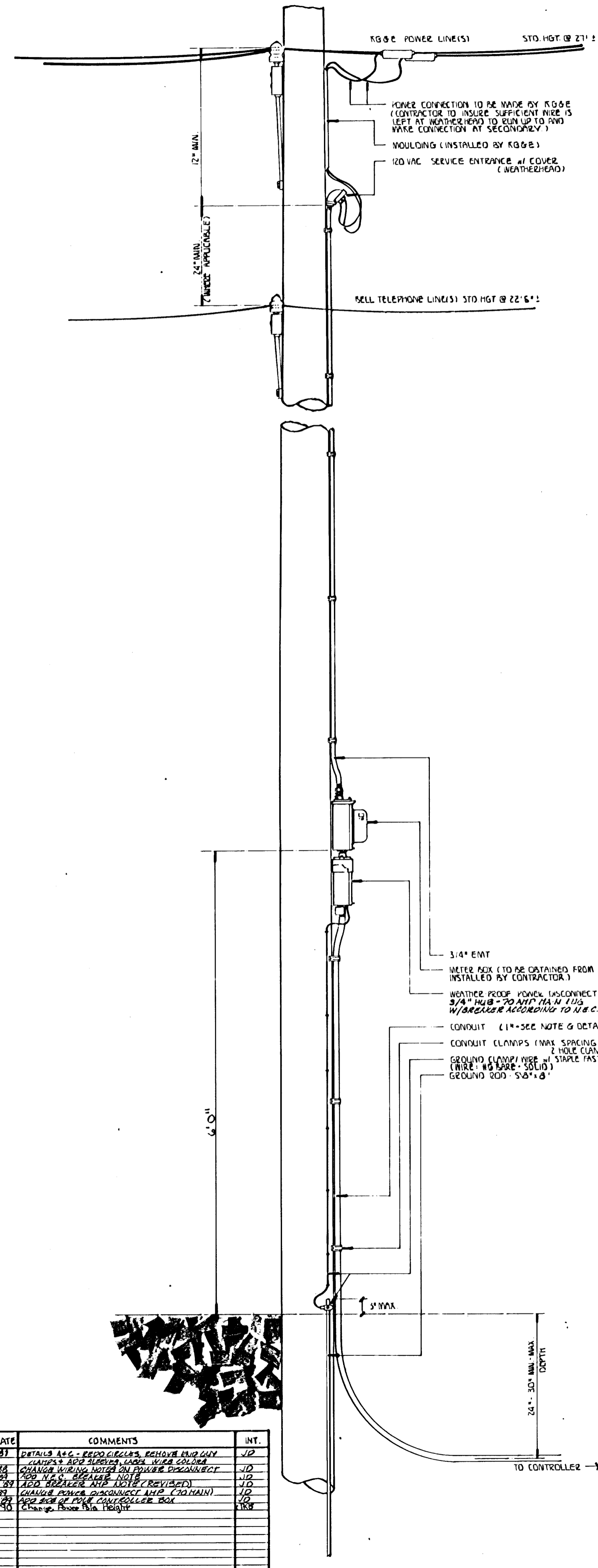
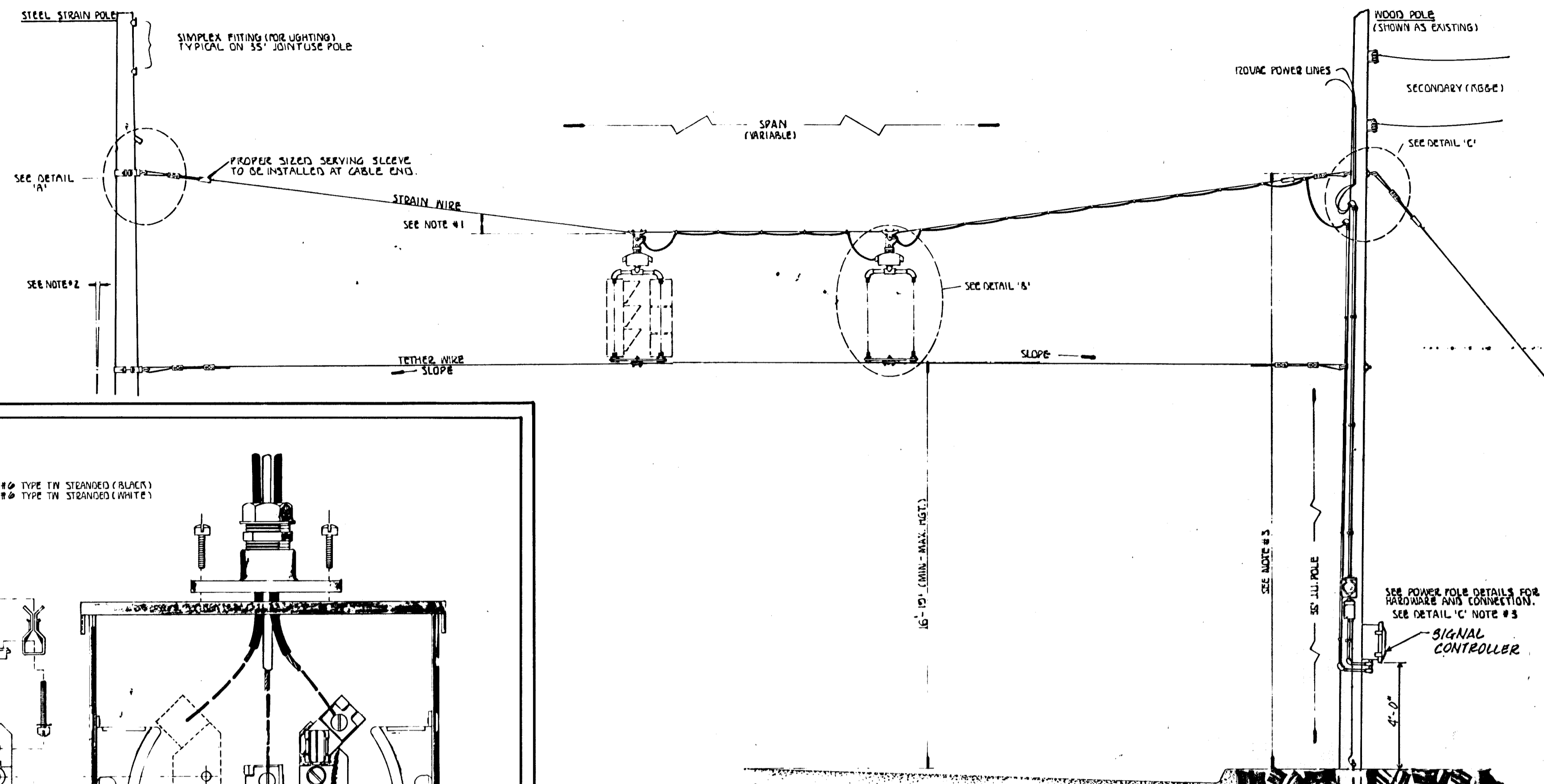


POWER POLE DETAILS

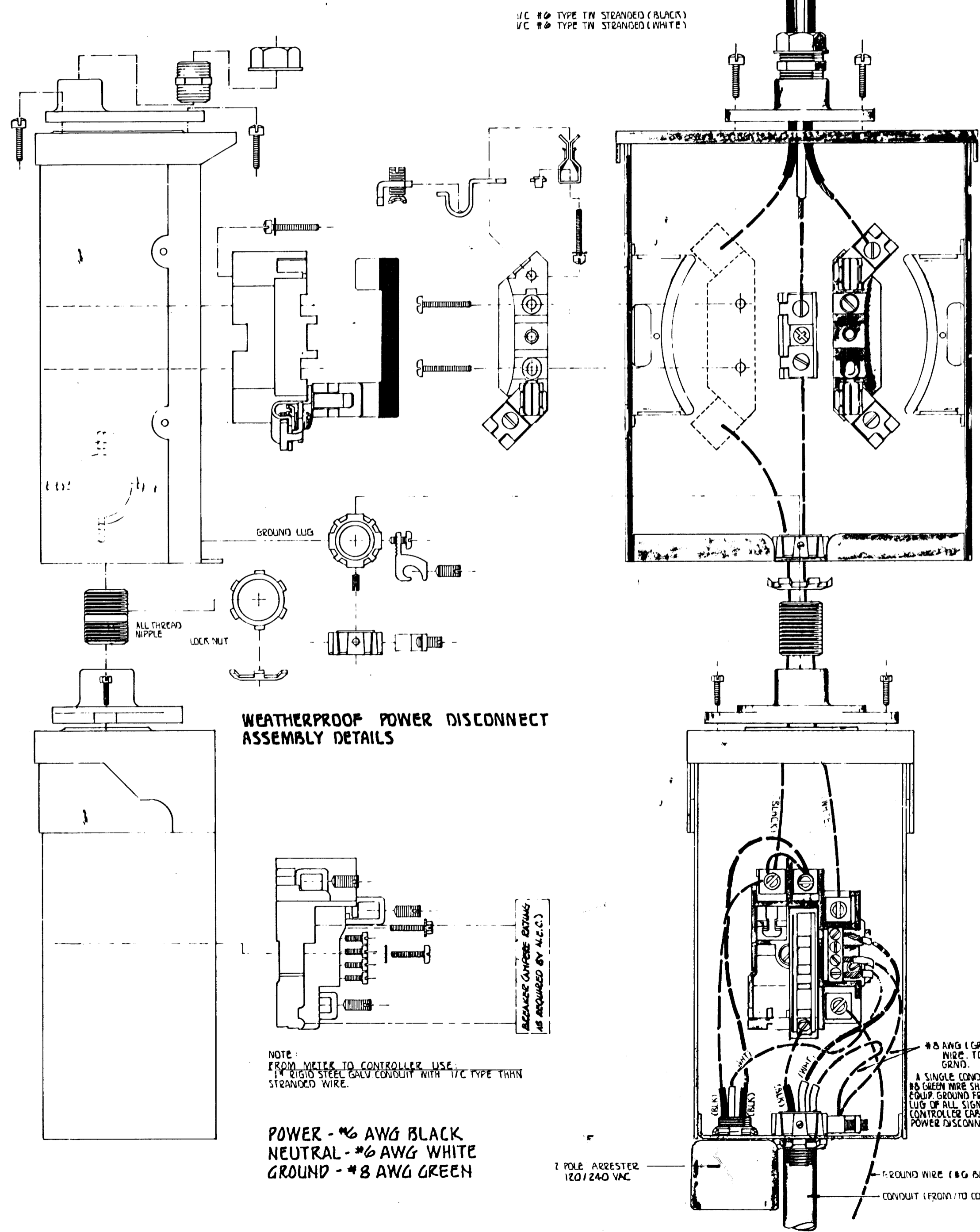


SPANWIRE ASSEMBLY DETAILS

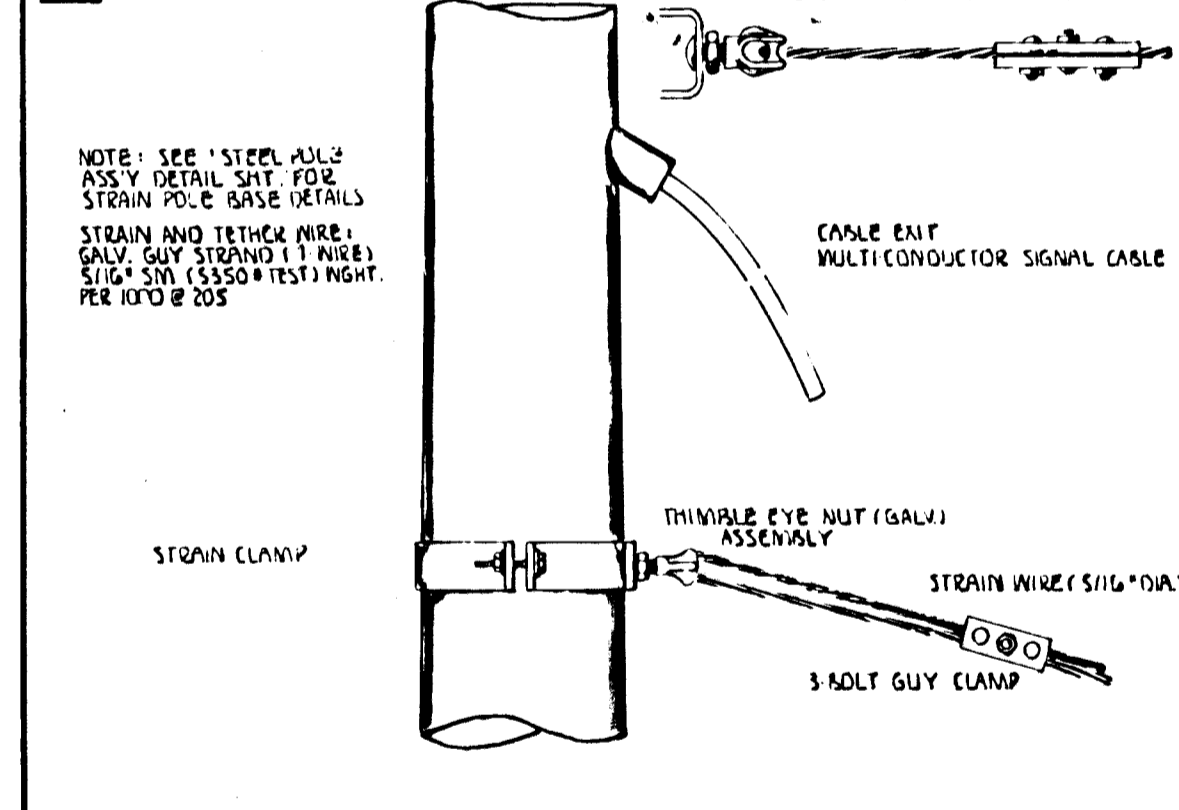
1. DROP MAX. AT 5% OF SPAN. (1% SAG)
2. STD. SLOPE AT 3%
3. HEIGHT OF STRAIN WIRE HOOK-UP TO BE DETERMINED BY FIELD ENGINEER. TRAFFIC SIGNAL CABLE TO BE SECURED TO STRAIN (SPAN) WIRE W/ NON-CORR. NYLON CABLE HANGERS (1/2" CTRS.) DETAIL 'B'
4. TETHER CLAMP TO BE DESIGNED TO RELEASE UNDER 'HIGH WIND LOAD' TO PERMIT SIGNAL 'FREE SWING'.
5. CONTRACTOR TO GIVE 24 HR. NOTICE TO ENGINEER PRIOR TO POURING ANY SIGNAL BASE OR CONTROLLER PAD.



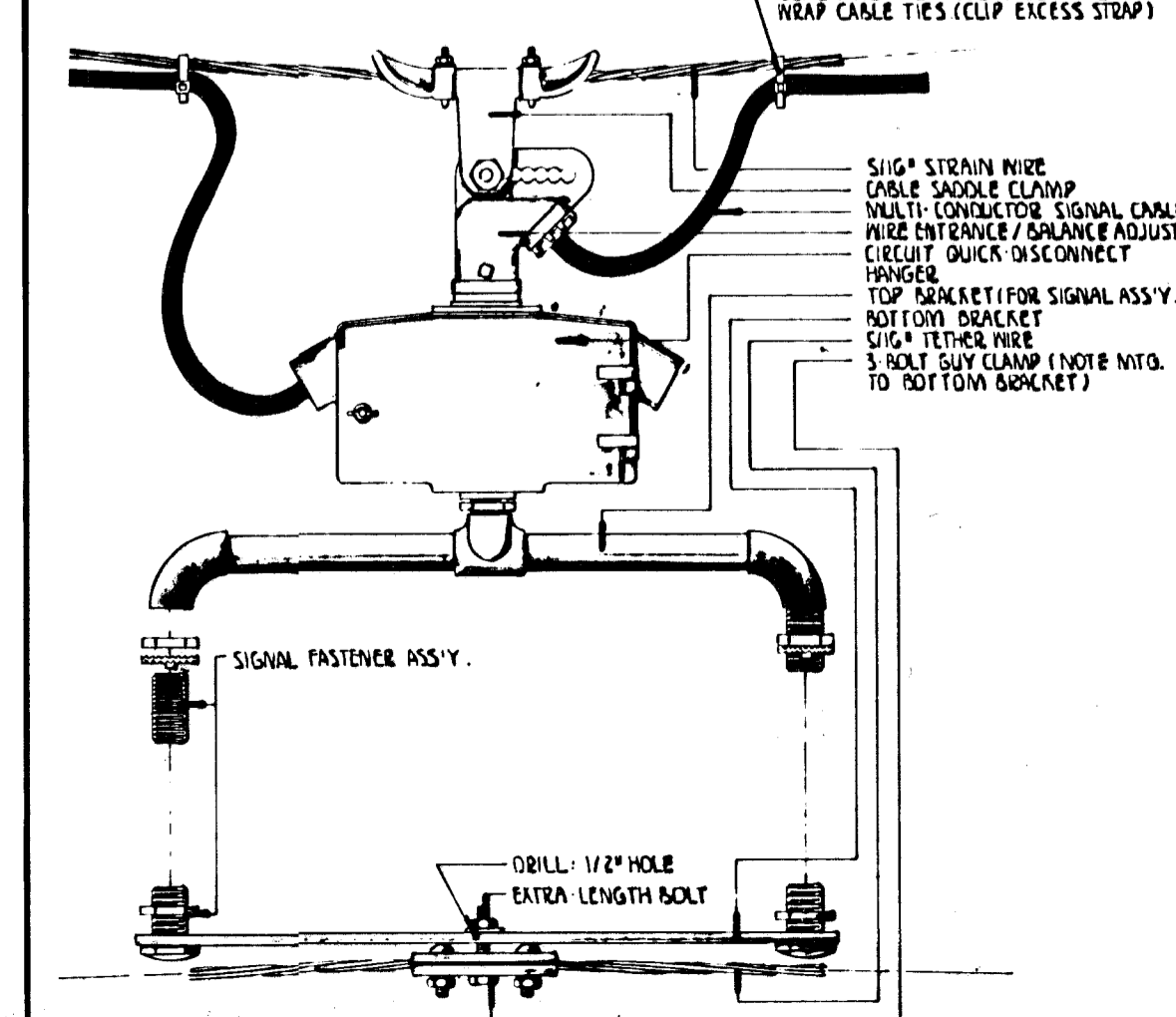
METER BOX ASSEMBLY DETAILS



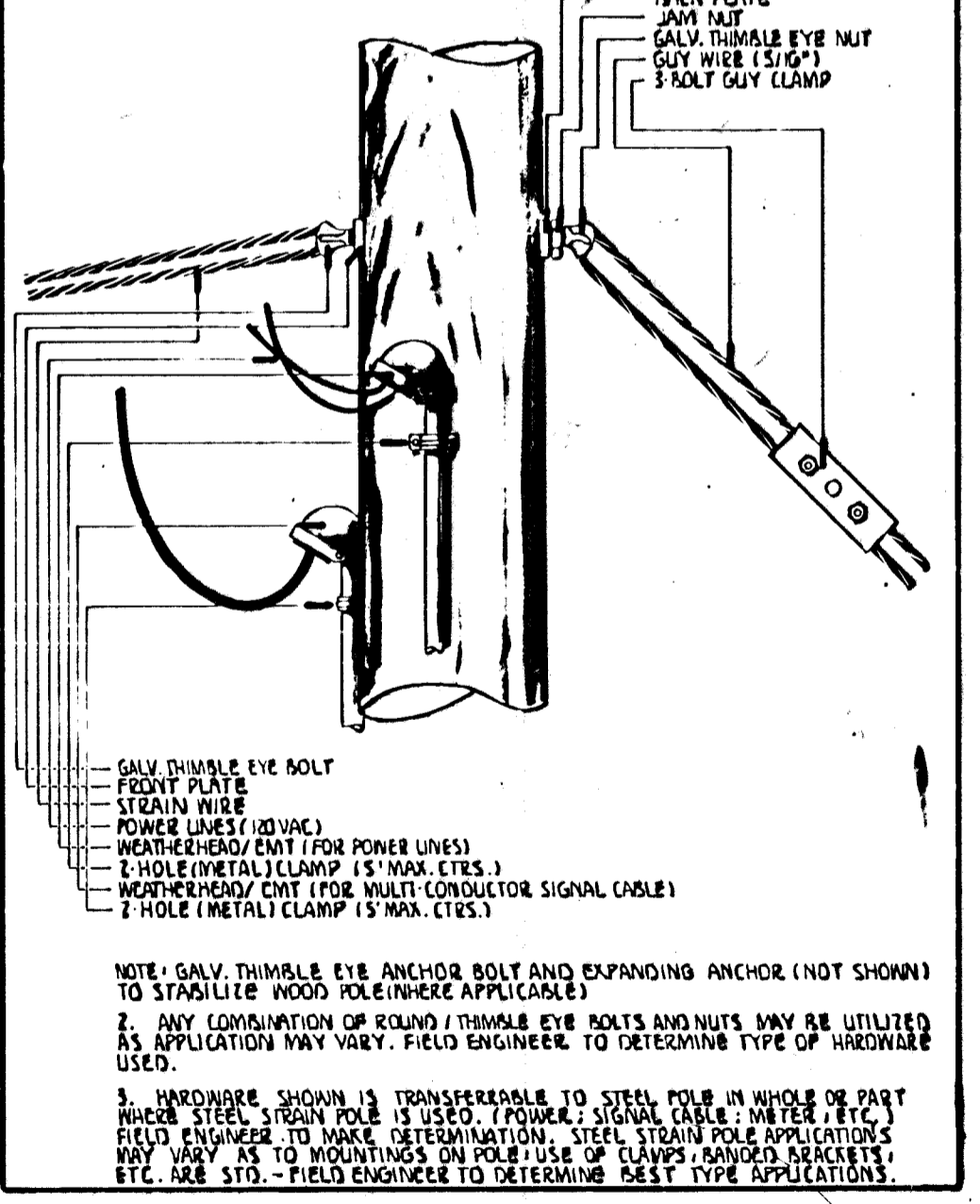
A STRAIN POLE ASSEMBLY DETAILS



B SIGNAL BRACKET ASSEMBLY DETAILS



C WOOD POLE ASSEMBLY DETAILS



REV. DATE	COMMENTS	INT.
REV. 01	DETAILS AS SHOWN	JD
REV. 02	CHANGE WIRING NOTES ON POWER DISCONNECT	JD
REV. 03	CHANGE WIRING NOTES ON POWER DISCONNECT	JD
REV. 04	CHANGE WIRING NOTES ON POWER DISCONNECT	JD
REV. 05	CHANGE WIRING NOTES ON POWER DISCONNECT	JD
REV. 06	CHANGE WIRING NOTES ON POWER DISCONNECT	JD
REV. 07	CHANGE WIRING NOTES ON POWER DISCONNECT	JD
REV. 08	CHANGE WIRING NOTES ON POWER DISCONNECT	JD
REV. 09	CHANGE WIRING NOTES ON POWER DISCONNECT	JD
REV. 10	CHANGE WIRING NOTES ON POWER DISCONNECT	JD

PROJECT DESCRIPTION

POWER POLE AND SPAN POLE ASSEMBLY DETAILS

STANDARD APPLICATIONS

PROJECT NUMBER

BOOK NO.	APPROVED BY	DATE SEPT. 03
DRAWN BY SCAL		REVISED 8-85

CITY OF WICHITA
DEPARTMENT OF PUBLIC WORKS

TRAFFIC ENGINEERING

W.M.G. WHINLEY TRAFFIC ENGINEER

SCALE DO NOT SCALE INFO ONLY

25

241

21