

CITY OF WICHITA  
 TAX  
 DOLLARS AT WORK  
 PROJECT TITLE, LIMITS

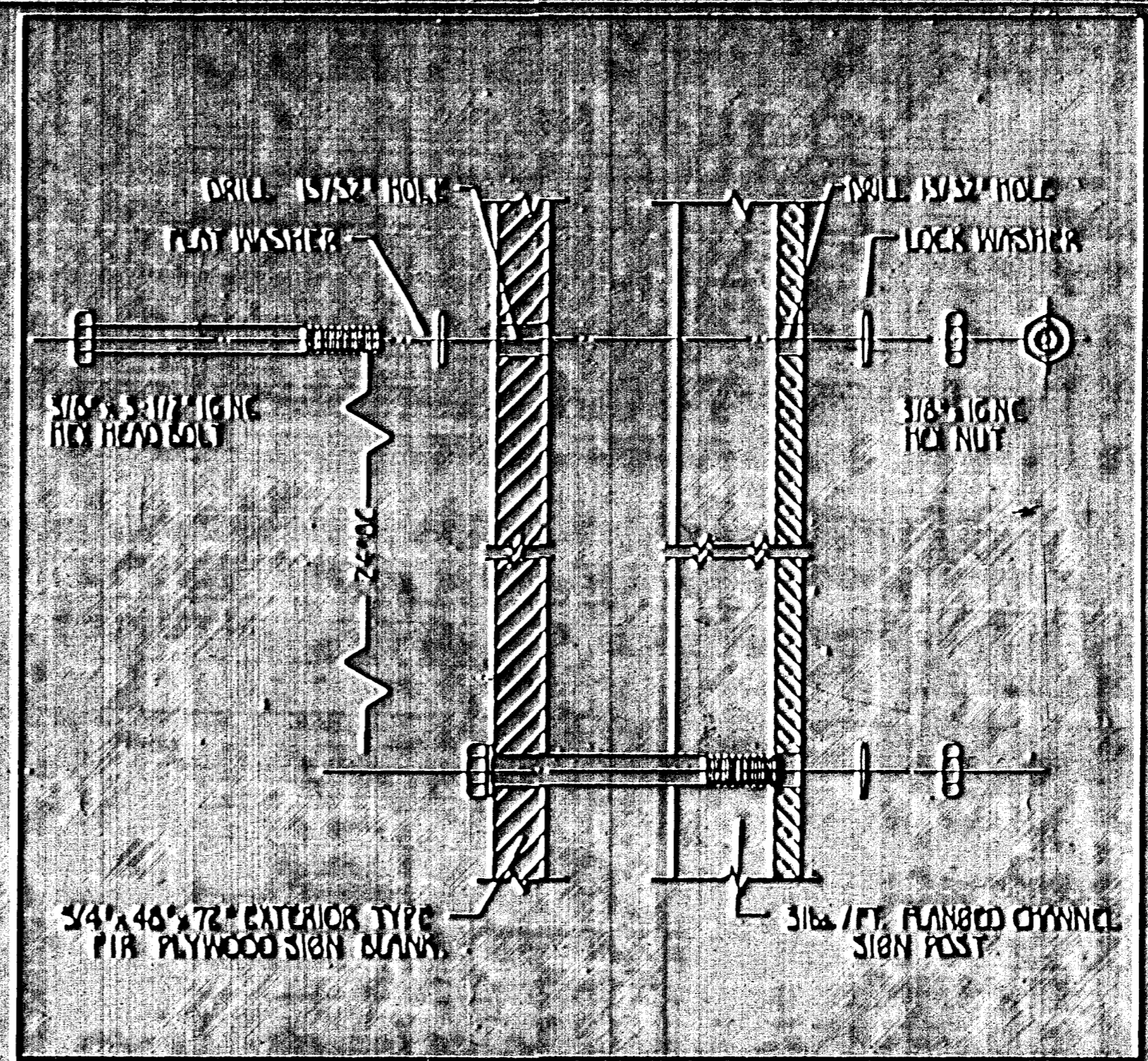
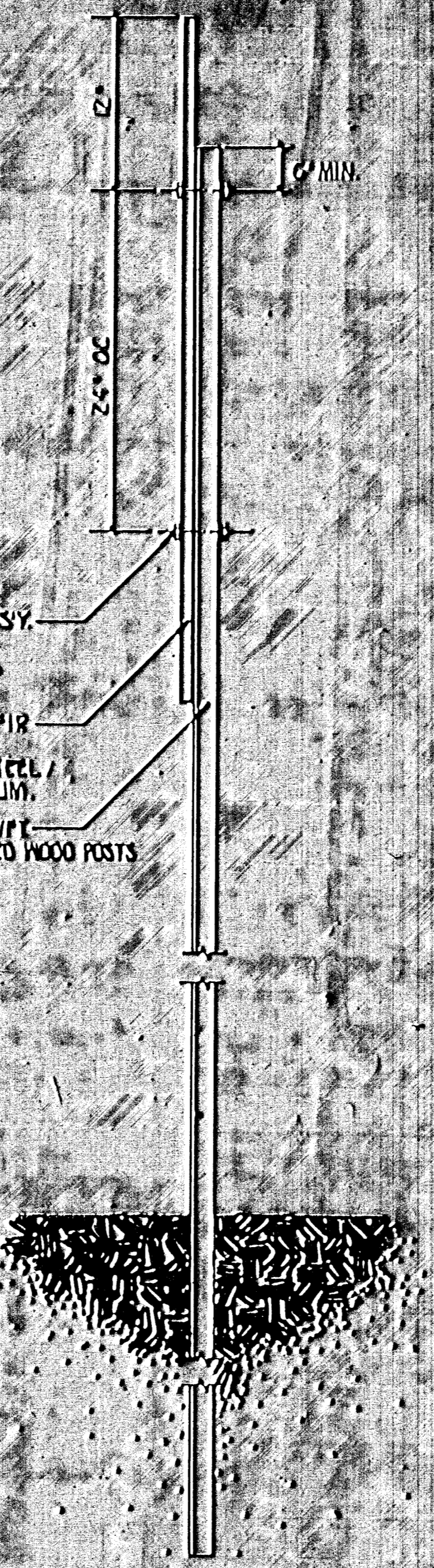
START: MONTH/YEAR COMPLETION: MONTH/YEAR  
 BRIDGE CONTRACTOR/PHONE NO. PROJ. COST:  
 PAVEMENT CONTRACTOR/PHONE NO. PROJ. COST:  
 SEWER CONTRACTOR/PHONE NO. PROJ. COST:

3"	LINE 1
2"	LINE 2
3"	LINE 3
2"	LINE 4
2 1/2"	LINE 5
5"	LINE 6
2 1/2"	LINE 7
1 1/2"	LINE 8
2"	LINE 9
1 1/2"	LINE 10
2"	LINE 11

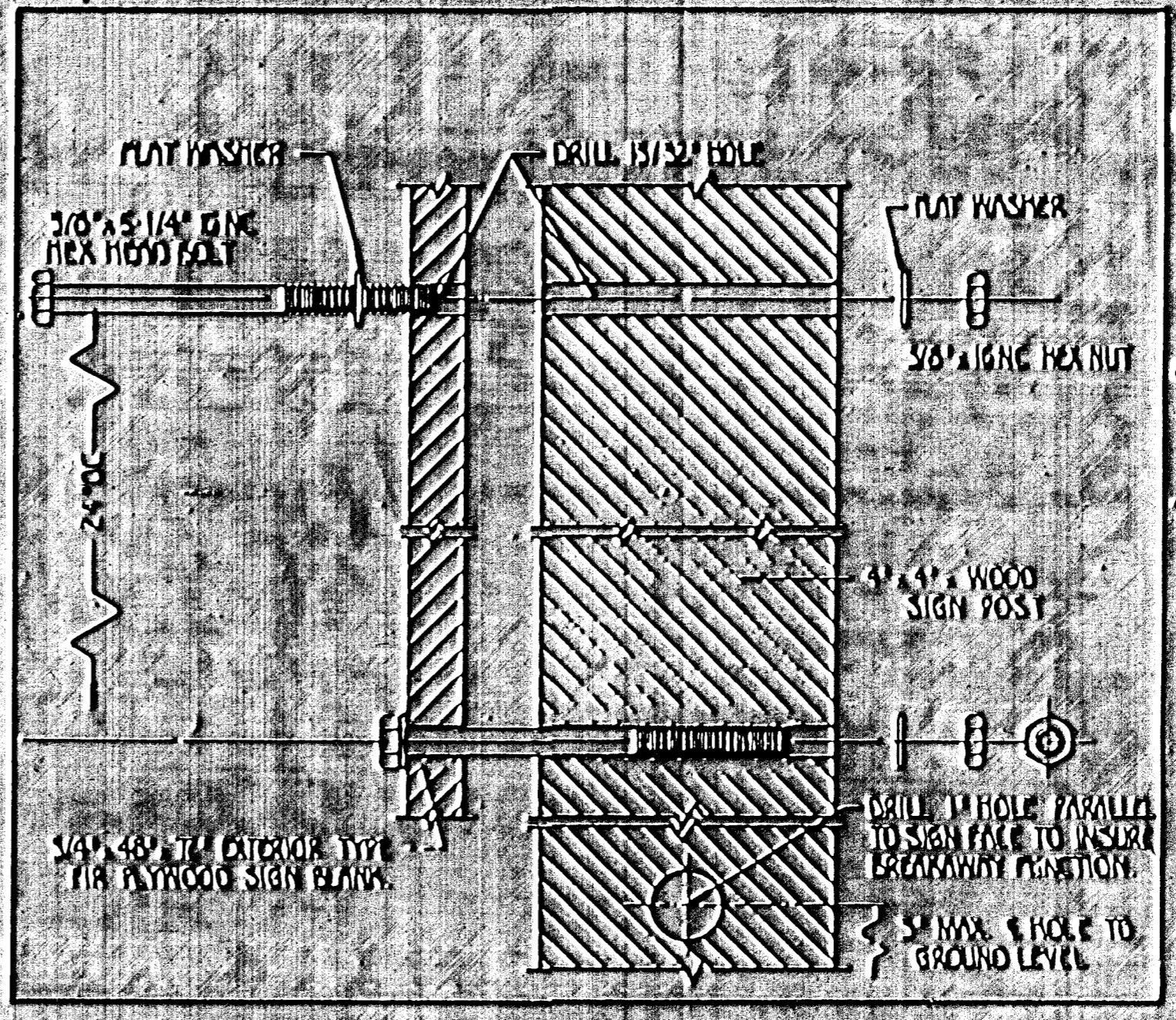
FASTENER ASS'Y.  
 NOTE 4,  
 DETAILS No 5

5/4" EXTERIOR TYPE FIR  
 PLYWOOD - NOTE 1  
 OPTIONAL MAT'L: 108# STEEL /  
 0.15G" SHT. ALUM.

FLANGED CHANNEL POST - 3/8" I/P  
 OPTIONAL MAT'L: 4" x 4" TREATED WOOD POSTS  
 NOTE 1



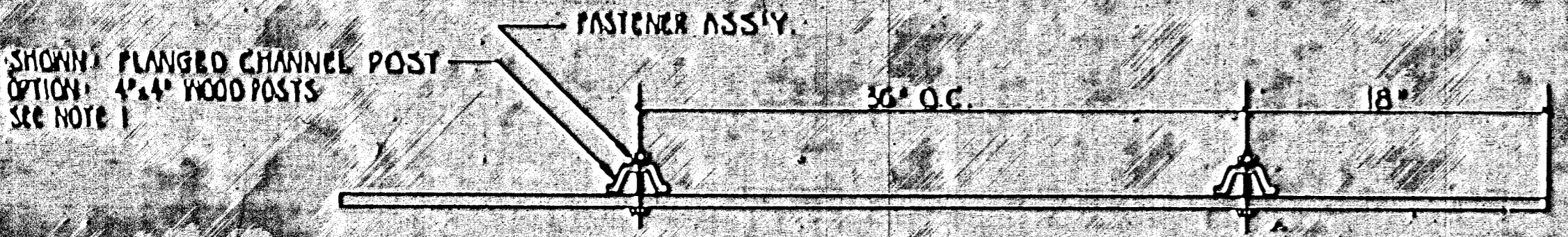
DETAIL A - PLYWOOD / FLANGED CHANNEL POSTS



DETAIL B - PLYWOOD / 4" x 4" WOOD POSTS

NOTES

- MATERIALS: THE SIGN SHALL BE MANUFACTURED FROM SIGNED MATERIALS COMPOSED OF (1) METAL: 108# STEEL OR 0.15G" THK. FLAT SHEET ALUMINUM (2) 5/4" EXTERIOR TYPE FIR PLYWOOD  
 THE SIGN POSTS SHALL BE (1) FLANGED CHANNEL POSTS 3/8" I/P OR (2) 4" x 4" COMMERCIAL GRADE TREATED WOOD SIGN POSTS.
- COLOR: THE FRONT FACE AND ALL EDGES OF THE SIGN SHALL BE PAINTED ONE COAT OF WHITE PRIMER TO BE FOLLOWED BY TWO COATS OF SEMI-GLOSS WHITE ENAMEL. ALL CHANNEL PAINTS SHALL BE OF QUAL AND OF EXTERIOR QUALITY. WHITE SIGN BACK, BLACK LEGEND.
- LEGEND AND INTERLINE SPACING: ALL LEGEND SHALL BE SERIES 'C' ALPHABET AS IS SPECIFIED IN THE STANDARD ALPHABETS FOR HIGHWAY SIGN APPLICATION. INTERLINE SPACING SHALL BE AS SPECIFIED ON THE LAYOUT WITH EXCEPTION OF LINES 4 & 5. APPROPRIATE LETTER SERIES TO CENTER MESSAGE LENGTH, PROJECT TITLE AND PROJECT LIMITS. DESCRIPTION ON LINES 4 & 5 RESPECTIVELY. LEGEND SHALL BE BLACK CHANNEL.
- HARDWARE: ALL BOLTS, NUTS AND WASHERS SHALL BE ELECTROPLATED WITH ZINC OR CROMIUM. SEE DETAIL A AND B.
- LOCATION OF SIGNS: SIGNS SHALL BE LOCATED WITHIN THE STREET RIGHT-OF-WAY AT LOCATIONS AS DESIGNATED ON THIS SHEET OR, AS DIRECTED BY THE FIELD ENGINEER. THE SIGN SHALL NOT OBSTRUCT TRAFFIC AND BE LOCATED SO AS NOT TO OBSCURE OR DISTRACT FROM THE EFFECTIVENESS OF OTHER OFFICIAL STREET SIGNING AND WARNINGS OR OBSTRUCT THE VISION OF MOTORISTS. SIGNS SHALL BE ERECTED IN ADVANCE OF ISSUING WORK ORDER.
- THE CONTRACTOR SHALL SUPPLY ALL SIGN CONSTRUCTION MATERIALS AND SHALL BE RESPONSIBLE FOR ITS FABRICATION, INSTALLATION, MAINTENANCE, AND REMOVAL.
- THE 14" DIA. CITY SEAL AND DECAL MAY BE PURCHASED FROM THE DEPARTMENT OF ENGINEERING, CITY OF WICHITA, FOR \$10.00 A SET.
- PRIOR TO SIGN MARKING, THE CONTRACTOR SHALL CONTACT THE CITY ENGINEER, DEPT OF ENG. TO OBTAIN THE REQUIRED INFORMATION FOR SIGN LEGEND.
- ALL TYPES OF WORK TO BE DONE ON THIS PROJECT AND SUBSEQUENT PROJECTS ARE TO BE SHOWN ON LINES 8, 9 AND 10 VERTICALLY AND HORIZONTALLY AS DIMENSIONED ON LAYOUT. PROJ. COST WILL HAVE DOLLAR AMOUNT POSITIONED AS SHOWN ON LAYOUT.



RE. / L. OF CENTERLINE	STATION	LOCATION
BT	194+36	SENEGA STREET
LT	122+30	SENEGA STREET

DO NOT SCALE FOR INFORMATION ONLY

REVISED 2/92 UKB

PROJECT CONSTRUCTION SIGN LAYOUT DETAILS

CITY OF WICHITA, KANSAS

M. B. LINDEBAR  
 CITY ENGINEER

PAUL GINS  
 CHIEF OF SEAL

NO SCALE