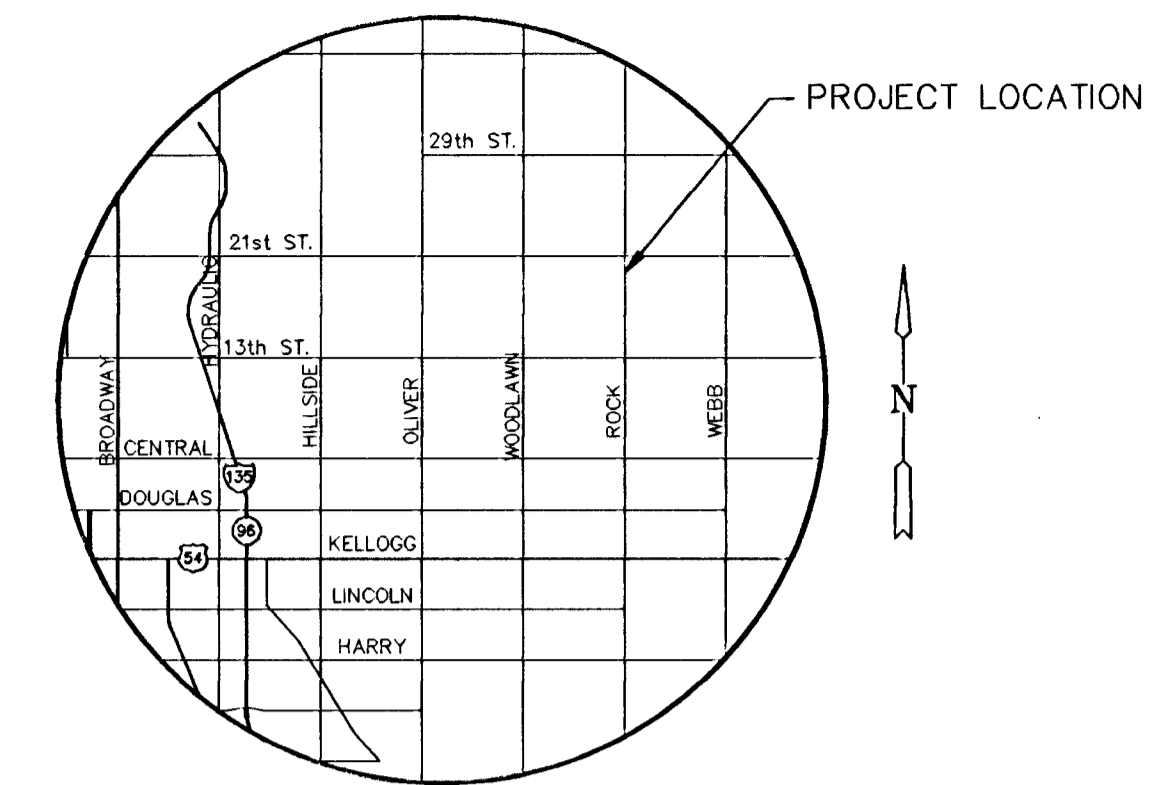


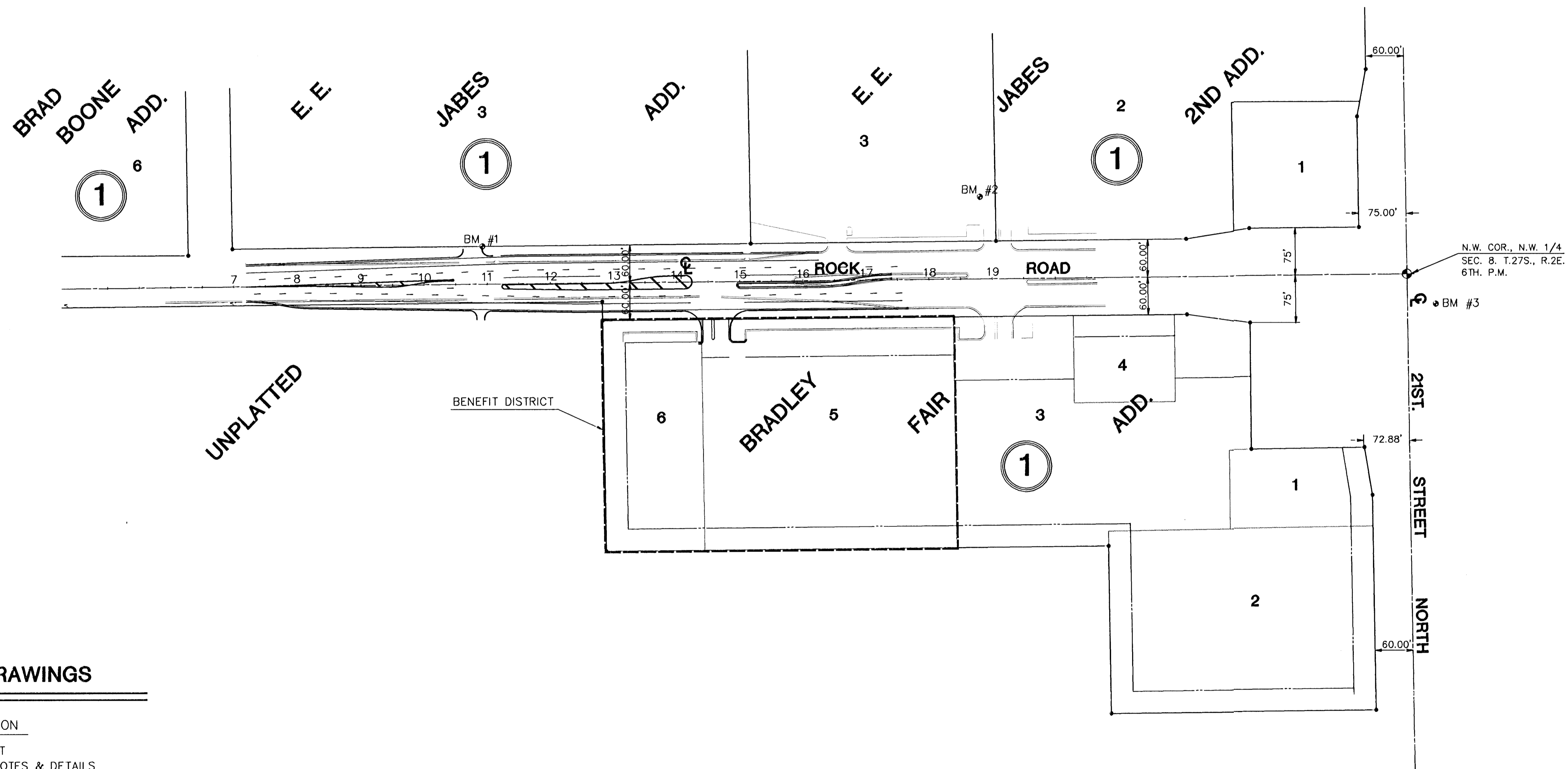
**BENCHMARKS**

- BM #1 "□" CUT ON BACK OF WALK N. SIDE OF DRIVE TO SUNDANCE APARTMENTS. ELEV. = 214.85
- BM #2 "□" CUT ON E. SIDE OF L.P. BASE 675' S. & 130' W. OF CENTERLINE 21ST & ROCK ROAD. ELEV. = 220.09
- BM #3 "□" CITY OF WICHITA DISC 45' N. AND 48' E. OF CENTERLINE OF 21ST AND ROCK ROAD. ELEV. = 214.57

PAVING PLANS FOR  
**BRADLEY FAIR**  
 NORTH ROCK ROAD IMPROVEMENTS  
**PROJECT NO.**  
**472-82341**  
 CITY OF WICHITA, KANSAS  
 MICHAEL E. LINDEBAK, CITY ENGINEER  
 INDEX NO. 762138

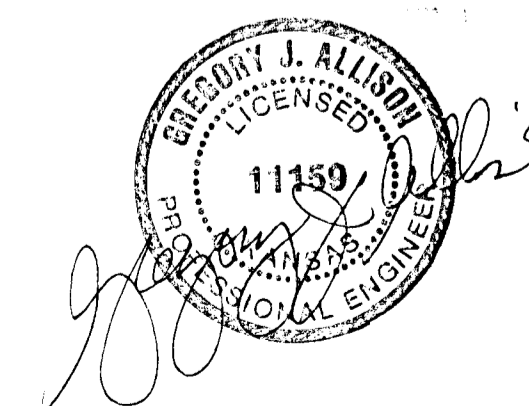


CITY OF WICHITA



**INDEX TO DRAWINGS**

SHEET NO.	DESCRIPTION
1	TITLE SHEET
2	GENERAL NOTES & DETAILS
3	PAVING DETAILS
4	STANDARD DRIVE ENTRANCE DETAILS
5	PAVING PLANS STA. 7+00 TO 13+00
6	PAVING PLANS STA. 13+00 TO 19+00
7	CURB INLET DETAILS
8	MANHOLE DETAILS
9	COLD PLASTIC PAVEMENT MARKING & SIGNING PLANS & DETAILS
10	LANDSCAPE PLANS STA. 7+00 TO 18+00
11	CROSS SECTIONS STA. 7+21.40 TO 14+00
12	CROSS SECTIONS STA. 14+50 TO 17+67.17



	<b>BRADLEY FAIR NORTH ROCK ROAD</b>	Design JTC Drawn by JTC Checked by GJA Date JUNE/94 Job no. 93092
	<b>PAVING PLANS</b>	Sheet <b>1</b> of <b>12</b>
MID-KANSAS ENGINEERING CONSULTANTS, INC. 3500 N. ROCK ROAD #800 WICHITA, KANSAS 67226		PH. 636-5566