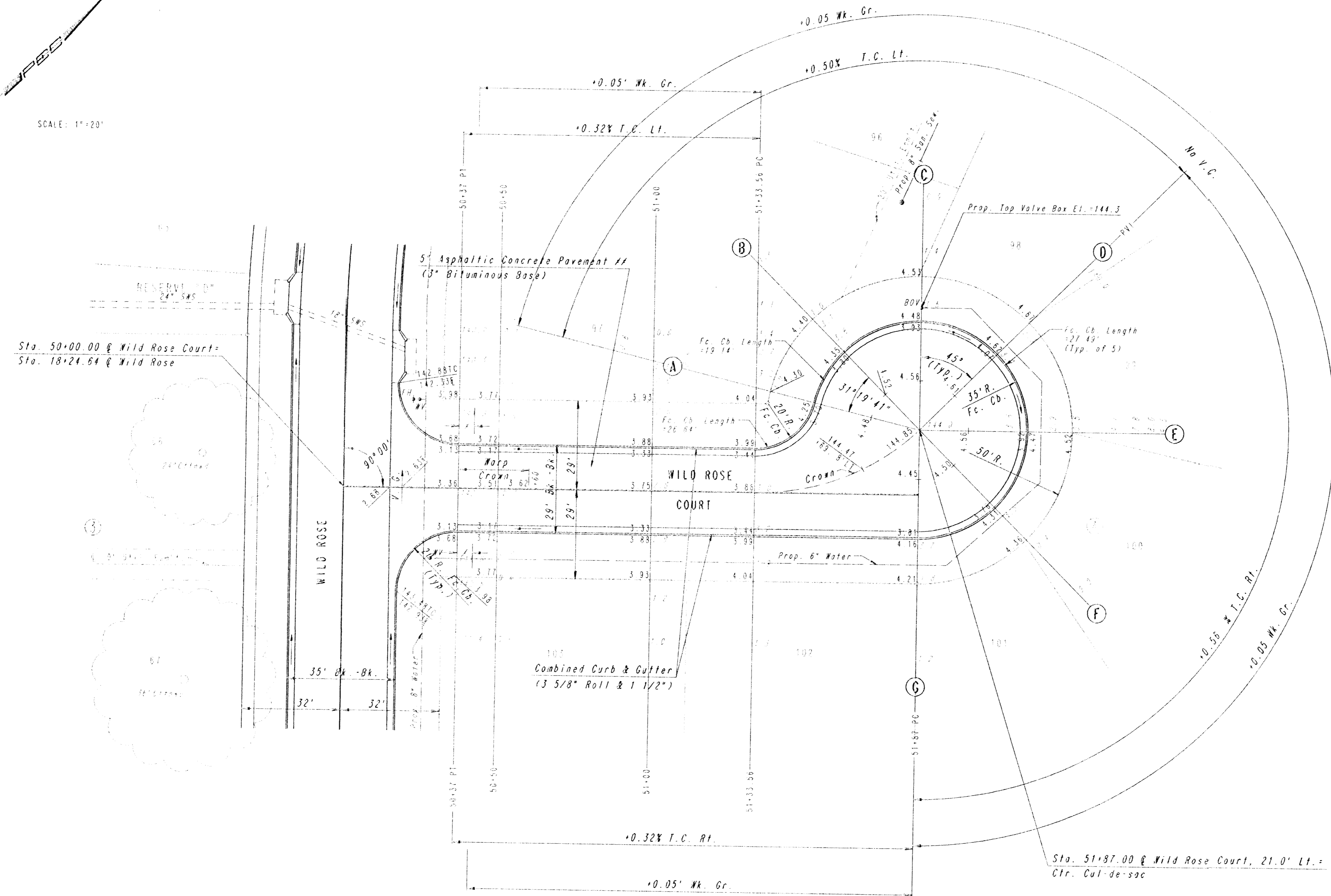


WATER VALVE BOX ELEVATIONS			
STREET	STATION	OFFSET	PROPOSED ELEVATION
WILD ROSE COURT	51+87	00.5' Lt.	144.3

PROJECT NO.	SHEET NO.	TOTAL SHEETS
472-76-245-82324-000-000-001	9	20

SCALE: 1"=20'



Sta. 50+00.00 @ Wild Rose Court
Sta. 18+24.64 @ Wild Rose

Sta. 51+87.00 @ Wild Rose Court, 21.0' Lt. =
Ctr. Cul-de-sac

NOTE: THIS STREET TO BE CONSTRUCTED WITH ROLL-TYPE CURB. TOP OF CURB ELEVATIONS GIVEN ARE FOR FULL HEIGHT CURB.

5' TRANSITION FROM MONOLITHIC EDGE CURB (6 5/8") TO COMBINED CURB AND GUTTER (3 5/8" ROLL & 1 1/2"). TO BE BID AND PAID FOR AS "COMBINED CURB AND GUTTER (3 5/8" ROLL & 1 1/2)".
7" ASPHALTIC CONCRETE PAVEMENT (5" BIT. BASE) FOR ALTERNATE 2 PAVEMENT

FOREST LAKES
PHASE NO. 8

WILD ROSE COURT

STA. 50+00.00 TO STA. 51+87.00

PROFESSIONAL ENGINEERING CONSULTANTS, P.A.
ENGINEERS
WICHITA, KANSAS

Designed by	MWB, GDD	Checked by	
Drawn by	DEP	Date	FEB., 1994
		Job No.	93695

PLAK	SUBMITTED	DATE
NOTE BOOK	FILED	
NO.	CHECKED	
	BY	

DRAWING NAME: 32-04654 WILD ROSE CT
LOCATION: 64 47122
CENTER COORDINATES:
ROTATION ANGLE:
DATE LAST WORKED ON:
DRAWN: DUNN