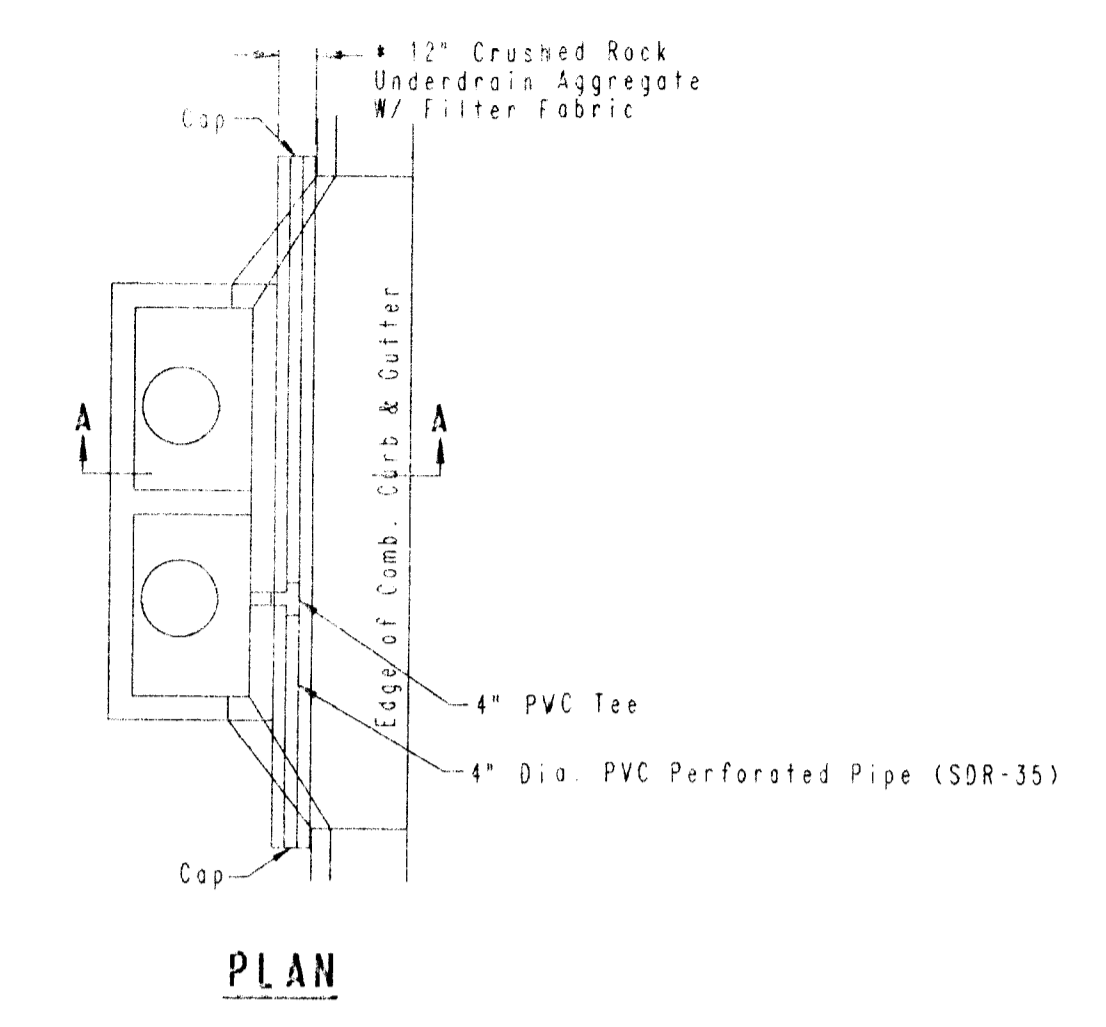
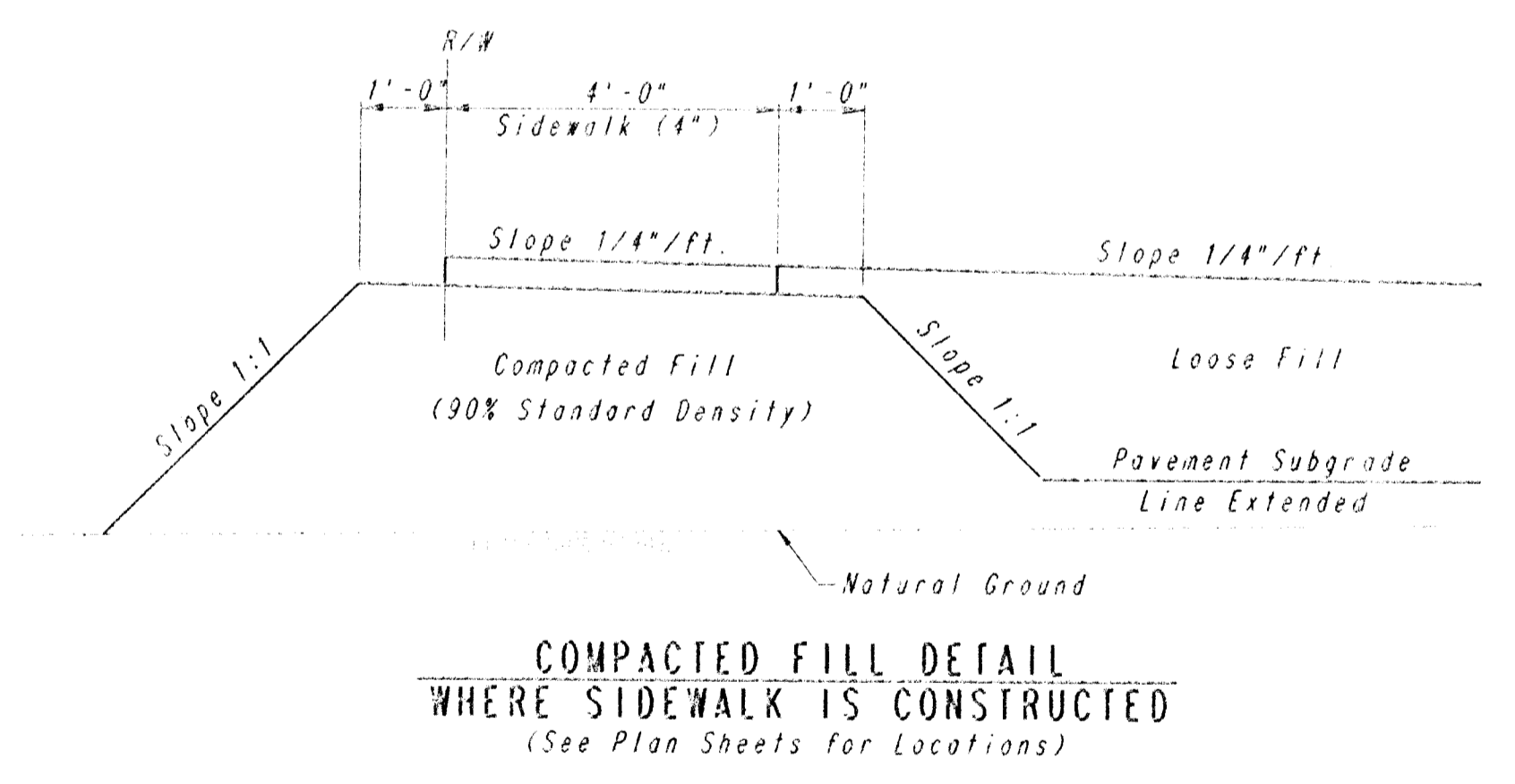


**4" WALK DETAILS**



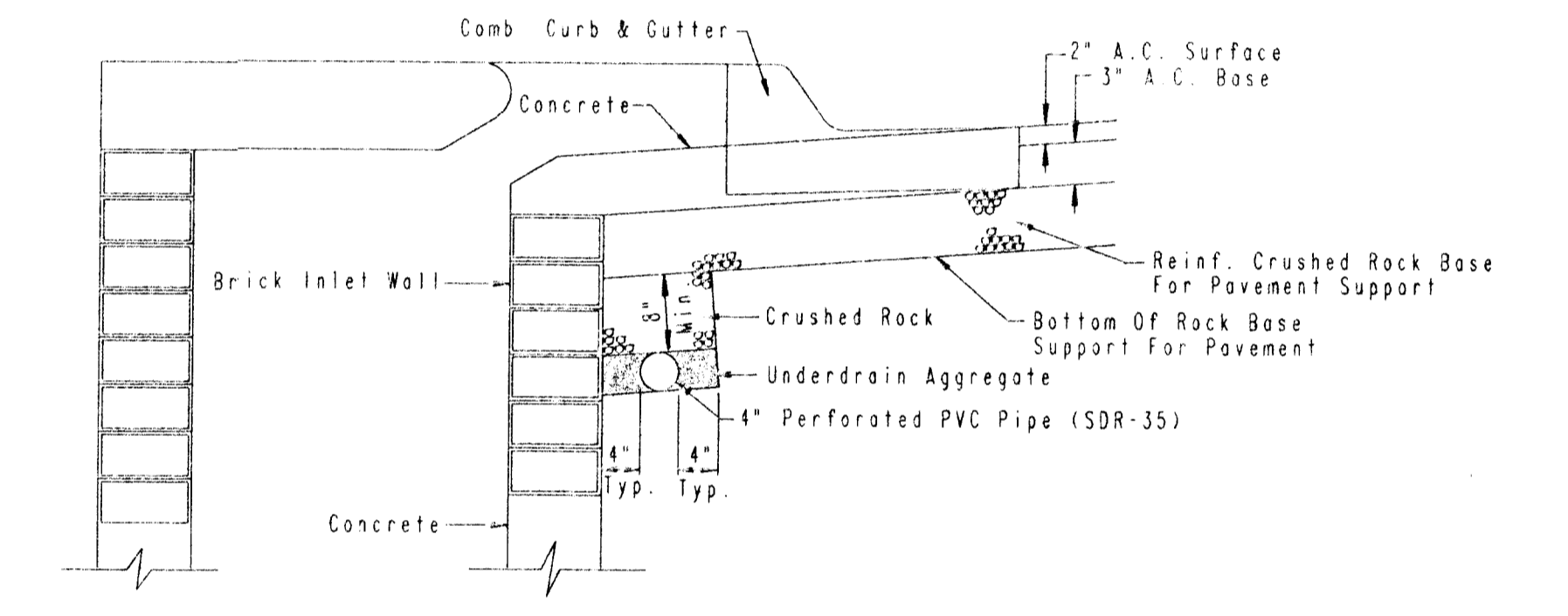
**UNDERDRAIN AGGREGATE**  
PERCENT OF AGGREGATE RETAINED

1"	0
3/4"	0-10
3/8"	45-80
#4	90-100
#8	95-100

ROCK QUALITY SHALL CONFORM TO THE REQUIREMENTS SPECIFIED BY THE KDOT 1990 EDITION STANDARD SPECIFICATION SUBSECTION 1102 FOR DURABILITY CLASS I.

**PAVEMENT UNDERDRAIN LOCATIONS**

STREET	STATION	SIDE
WILD ROSE	18+57.14	RT.
WILD ROSE	18+85	LT.
WILD ROSE	22+92	LT.
WILD ROSE	23+10.52	RT.



(Min. 16 Perforations Per Lin. Ft. @ 1/4" Dia.)  
Perforations To Be on Bottom Half

**SECTION A-A**

**PAVEMENT UNDERDRAIN DETAIL**  
*For Alternate 1 Only*

NOTE: PLACE 4" PVC PERFORATED PIPE AT ALL DRAINAGE SUMP LOCATIONS.  
COST OF UNDERDRAIN SYSTEM TO BE INCIDENTAL TO THE REINFORCED CRUSHED ROCK SUBGRADE.  
INLET TYPE MAY VARY FROM THAT SHOWN.  
PAVEMENT CONTRACTOR WILL BE REQUIRED TO INSTALL SDR 35, 4" PERFORATED DRAIN PIPE AND TEE AS INDICATED IN THE DETAILS ABOVE. A PIPE STUB HAS BEEN INSTALLED THROUGH WALLS OF CURB INLETS BY OTHERS IN A MANNER ALLOWING CONNECTION OF ADDITIONAL DRAIN PIPE AND TEE AS REQUIRED BY DETAILS ABOVE.

PLAN	SUBMITTED	DATE
NOISE BOOK	ALIGNED	CHECKED
RD.	BY	DATE
BY	DATE	

DRAWING NAME: 30-83685 WILD-PAV-DTL  
DRAWN BY: M. F. FLEGG  
CHECKED BY: M. F. FLEGG  
DATE: 1/11/94  
DATE LAST WORKED ON:  
DRAWN BY: M. F. FLEGG

FOREST LAKES  
PHASE NO. 8

**MISCELLANEOUS PAVING  
DETAILS**

PROFESSIONAL ENGINEERING CONSULTANTS, P.A.  
ENGINEERS  
WICHITA, KANSAS

Designed by	MWB, GDD	Checked by	
Drawn by	DEP	Date	JAN., 1994
		Job No.	93695