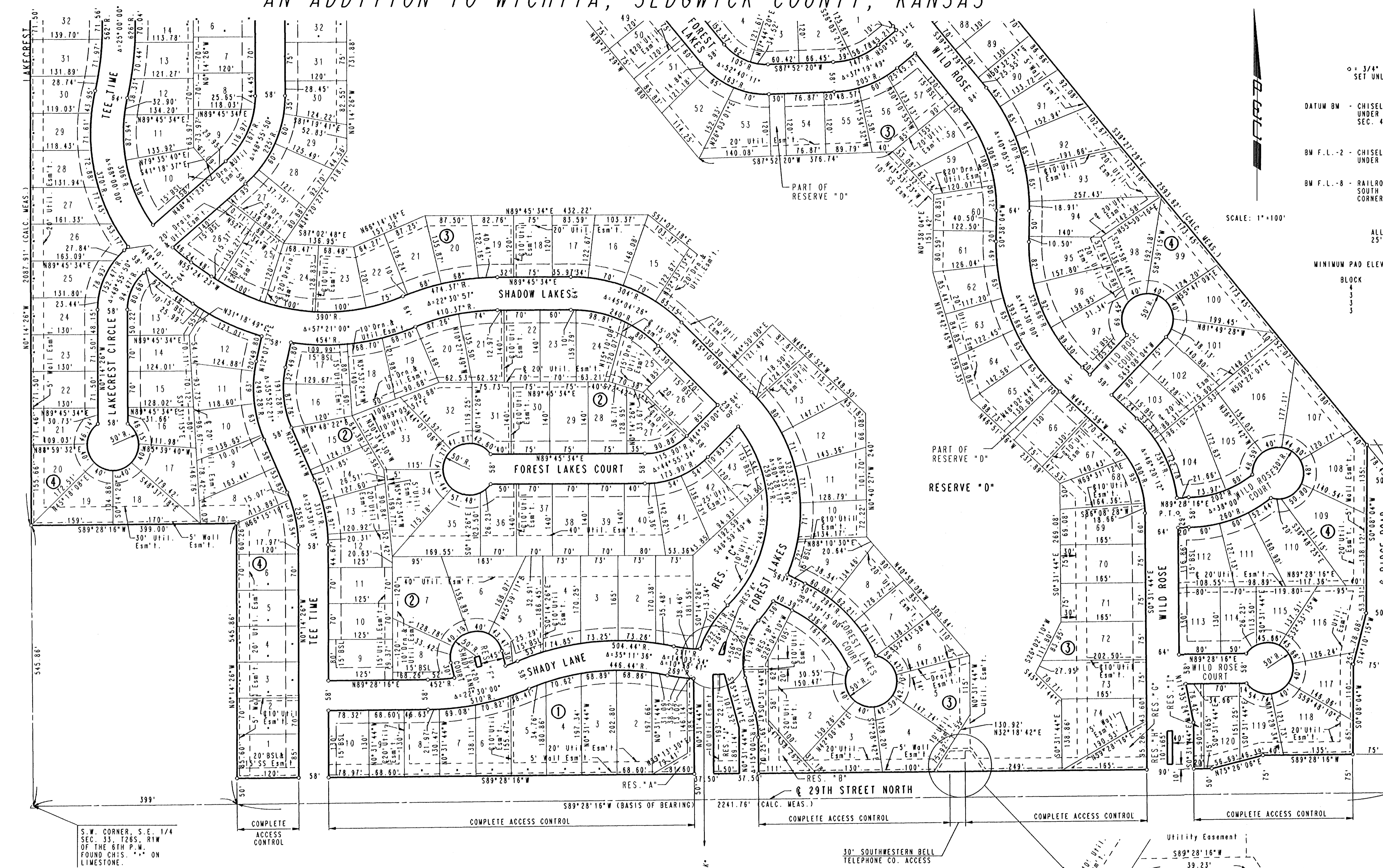


FOREST LAKES

AN ADDITION TO WICHITA, SEDGWICK COUNTY, KANSAS

PROJECT NO. 472-76-245-82323-000-000-001	SHEET NO. 2	TOTAL SHEETS 23
---	----------------	--------------------



- = 3/4" IRON PIPE WITH I.O. CAP ("PEC PA") SET UNLESS OTHERWISE NOTED.
- DATUM BM - CHISELED "O" ON NE CORNER OF EAST HEADWALL OF RCB UNDER RIDGE RD. AT 200' NORTH OF EAST 1/4 CORNER, SEC. 4, T25S, R1W. ELEV. 138.46
- BM F.L.-2 - CHISELED "O" ON NORTH END OF WEST HEADWALL OF RCB UNDER WILD ROSE ON SOUTH SIDE OF 29TH STREET NORTH. ELEV. 138.90
- BM F.L.-8 - RAILROAD SPIKE IN SOUTH FACE OF 18" ELM IN NORTH TO SOUTH TREE ROW AT 25' EAST AND 125' NORTH OF EAST CORNER OF LOT 26, BLOCK 2, FOREST LAKES ADDITION. ELEV. 141.61

ALL BUILDING SETBACK LINES ARE 25' UNLESS OTHERWISE LABELED.

MINIMUM PAD ELEVATIONS (LOWEST OPENING) SHALL BE AS FOLLOWS:

BLOCK	LOTS	CITY DATUM	W.S.L.
4	41 THROUGH 50	144.82	1332.0
5	1 THROUGH 14	140.32	1327.5
5	54 THROUGH 74	140.32	1327.5
5	15 THROUGH 53	141.82	1329.0

NE CORNER, SE 1/4 SEC. 33, T26S, R1W OF THE 6TH P.W. FOUND 1/2" IRON PIPE IN THIMBLE.

NO MONUMENT SET

S.E. CORNER, S.E. 1/4 SEC. 33, T26S, R1W OF THE 6TH P.W. FOUND 5/8" BAR IN THIMBLE.

PLAN	DATE	BY
SURVEYED		
NOTE BOOK PLOTTED		
ALIGNMENT CHECKED		
BT. OF WAY CHECKED		

DRAWING NAME: 32-93684 PLAT SH 1
 LOCATION: WKS 47588
 CENTER COORDINATES:
 ROTATION ANGLE:
 DATE LAST WORKED ON:
 DWYANE DUNN

FOREST LAKES
PHASE NO. 7
PLAT

PROFESSIONAL ENGINEERING CONSULTANTS, P.A.
ENGINEERS
WICHITA, KANSAS

Designed by	Checked by
Drawn by DEP	Date FEB., 1994 Job No. 93694