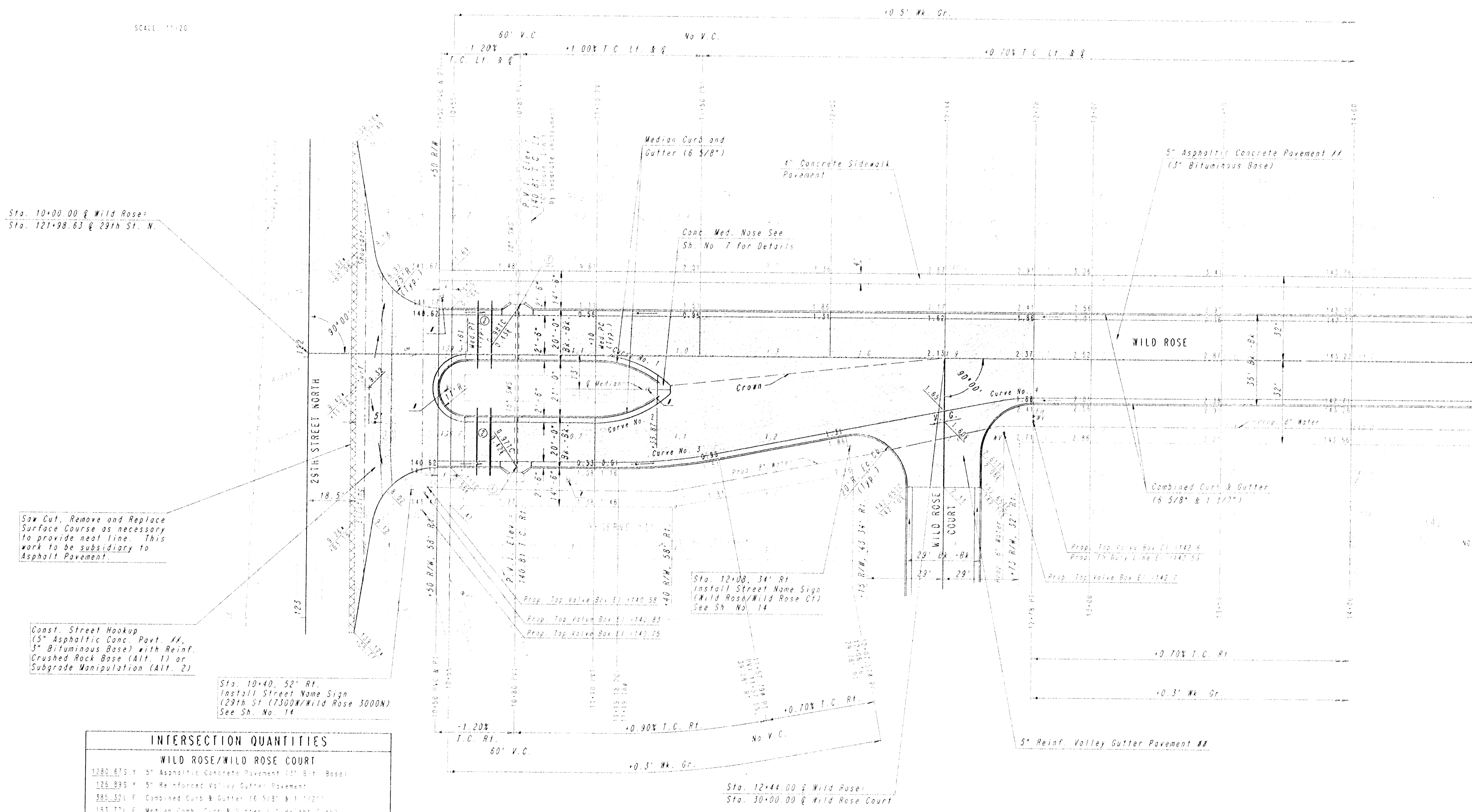


| WATER VALVE BOX ELEVATIONS | | | | |
|----------------------------|---------|----------|--------------------|--------------------|
| STREET | STATION | OFFSET | EXISTING ELEVATION | PROPOSED ELEVATION |
| WILD ROSE | 10+00 | 60' R. | 140.58 | 140.58 |
| WILD ROSE | 10+20 | 43' R. | 140.81 | 140.81 |
| WILD ROSE | 10+37 | 61' R. | 140.75 | 140.75 |
| WILD ROSE | 10+65 | 54' S.W. | 140.70 | 140.70 |
| WILD ROSE | 12+00 | 74' S. | 140.69 | 140.69 |

SCALE: 1"=20'



| PLAN | SURVEYED | DATE |
|------|----------|------|
| DATE | BY | |
| DATE | BY | |
| DATE | BY | |

Sta. 10+00.00 @ Wild Rose:
Sta. 121+98.63 @ 29th St. N.

Saw Cut, Remove and Replace Surface Course as necessary to provide neat line. This work to be subsidiary to Asphalt Pavement.

Const. Street Hookup (5" Asphaltic Conc. Pavt. #1, 3" Bituminous Base with Reinf. Crushed Rock Base (Alt. 1) or Subgrade Manipulation (Alt. 2)

Sta. 10+40, 52' Rt. Install Street Name Sign (29th St. (3000'/Wild Rose 3000N) See Sh. No. 14

Sta. 12+08, 34' Rt. Install Street Name Sign (Wild Rose/Wild Rose Ct) See Sh. No. 14

Sta. 12+44.00 @ Wild Rose:
Sta. 30+00.00 @ Wild Rose Court

| INTERSECTION QUANTITIES | |
|---------------------------|---|
| WILD ROSE/WILD ROSE COURT | |
| 1280.675 Y | 5" Asphaltic Concrete Pavement (2" Bit. Base) |
| 126.895 Y | 5" Reinforced Valley Gutter Pavement |
| 385.321 F | Combined Curb & Gutter (6 5/8" & 1 1/2") |
| 183.721 F | Median Comb. Curb & Gutter (1" Height Curb) |
| 77.441 F | Monolithic Edge Curb (6 5/8") |
| 1659.135 Y | 5" Crushed Rock Base |

| Curve No. | Curve Data |
|-----------|---|
| 1 & 2 | Curve No. 1 & 2 (Face of Curb) Sta. 10+00.00 Sta. 10+14.74 Sta. 10+30.00 Sta. 10+45.00 Sta. 10+60.00 Sta. 10+75.00 Sta. 10+90.00 Sta. 11+05.00 |
| 3 | Curve No. 3 (Face of Curb) Sta. 11+10.00 Sta. 11+25.00 Sta. 11+40.00 Sta. 11+55.00 Sta. 12+00.00 Sta. 12+15.00 Sta. 12+30.00 Sta. 12+45.00 |
| 4 | Curve No. 4 (Edge of Pavt.) Sta. 12+50.00 Sta. 13+05.00 Sta. 13+20.00 Sta. 13+35.00 Sta. 13+50.00 Sta. 13+65.00 Sta. 13+80.00 Sta. 13+95.00 |

| CURVE NO. 3 STAKING DATA | | | | | | |
|--|----------------------------|----------------------------|----------------------|------------------|------------------|---------|
| CURVE DATA BASED ON RADIUS TO 8" BEHIND FACE OF CURB | | | | | | |
| FACE CURB STATION | ARC LENGTH ALONG FACE CURB | ARC LENGTH ALONG 8" OFFSET | CHD LENGTH FC. OF CB | DEFLECTION ANGLE | TOTAL DEFLECTION | REMARKS |
| 11+10.00 | 0.00 | 0.00 | 0.00 | 0.00 | 0.00 | |
| 11+25.00 | 1.92 | 6.38 | 6.38 | 7.14 | 0.50 | |
| 11+40.00 | 3.84 | 12.76 | 12.76 | 14.28 | 1.00 | |
| 11+55.00 | 5.76 | 19.14 | 19.14 | 21.42 | 1.50 | |
| 12+00.00 | 7.68 | 25.52 | 25.52 | 28.56 | 2.00 | |
| 12+15.00 | 9.60 | 31.90 | 31.90 | 35.70 | 2.50 | |
| 12+30.00 | 11.52 | 38.28 | 38.28 | 42.84 | 3.00 | |
| 12+45.00 | 13.44 | 44.66 | 44.66 | 50.00 | 3.50 | |

- ① Const. Std. Type 1A Inlet Hookup, Inlet Adjustment and Install Inlet Protection, See Sh. Nos. 13, 15 and 17.
- ② Sta. 10+65, 7.5' Lt. and 33.5' Rt. and Sta. 10+70, 7.5' Lt. and 33.5' Rt. Install 4-26 L.F. C-900 4" PVC Pipe Sleeve w/ Caps (2) a minimum of 42" below Top of Curb. Pipe and Installation to be subsidiary to Median Combined Curb and Gutter (6 5/8").

NOTE: EACH END FOR ALL C-900 4" PVC PIPE SLEEVES SHALL BE MARKED WITH STEEL T-POSTS OR 2" STEEL PIPE A MAXIMUM 12" ABOVE GRADE. MARKERS TO BE SUBSIDIARY TO MEDIAN COMBINED CURB AND GUTTER (6 5/8").

CONTRACTOR SHALL RESTORE TURF SHOULDER, DITCH AND DITCH SLOPE AND SEED AND MULCH ALL DISTURBED AREAS IN 29th St. N. ROW. THIS WORK SHALL BE SUBSIDIARY TO ASPHALT PAVEMENT.

STORM WATER SHWER PIPES AND INLETS TO BE CONSTRUCTED BY OTHERS UNDER C.D.W. PROJECT NO. 472-76-245-82379-000-000-001.

SEE SH. NO. 7 FOR MEDIAN DETAILS AND ADDITIONAL SPOT ELEVATIONS.

- * MATCH EXISTING
- # 5" TRANSITION FROM NO CURB TO FULL 6 5/8" CURB TO BE BID AND PAID FOR AS "COMBINED CURB AND GUTTER (6 5/8" & 1 1/2")"
- # RIGHT FACE OF CURB STATION
- # SEE SH. NO. 14 FOR SIGNING NOTES AND DETAILS
- # 7" ASPHALTIC CONCRETE PAVEMENT (5" BIT. BASE) FOR ALTERNATE 2 PAVEMENT
- # 8" 7" REINF. VALLEY GUTTER PAVEMENT (5" REINF. CONCRETE W/ 2" BIT. BASE) FOR ALTERNATE 2 PAVEMENT

FOREST LAKES
PHASE NO. 7

WILD ROSE

STA. 10+00.00 TO STA. 14+00.00

PROFESSIONAL ENGINEERING CONSULTANTS, P.A.
ENGINEERS
MICHIGAN, KANSAS

| | |
|-------------------|--------------------------------|
| Des. by: MWB, GDD | Checked by: |
| Drawn by: SEP | Date: FEB., 1994 Job No. 93694 |

DRAWING NAME: 87-93694 WILD ROSE 1
LOCATION: FOREST LAKES
CENTER COORDINATES:
ELEVATION ANGLE:
DATE LAST WORKED ON:
DRAWN BY: DEAN