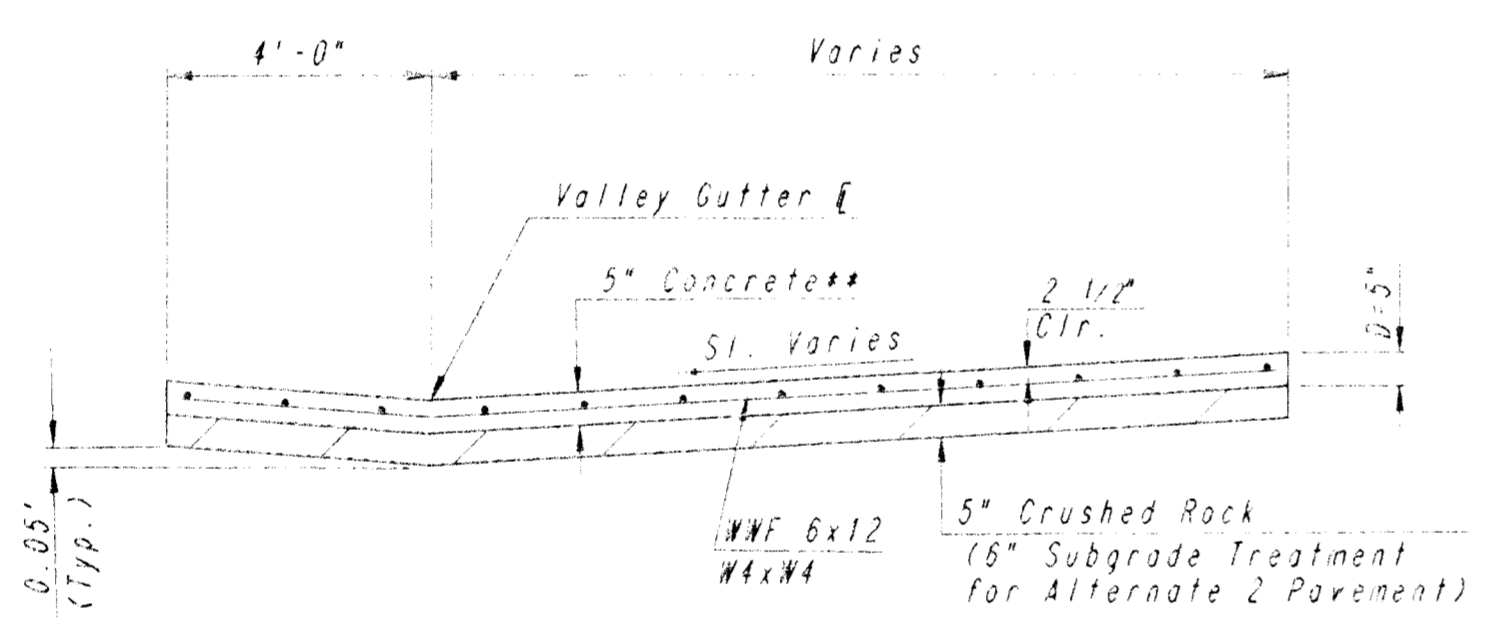
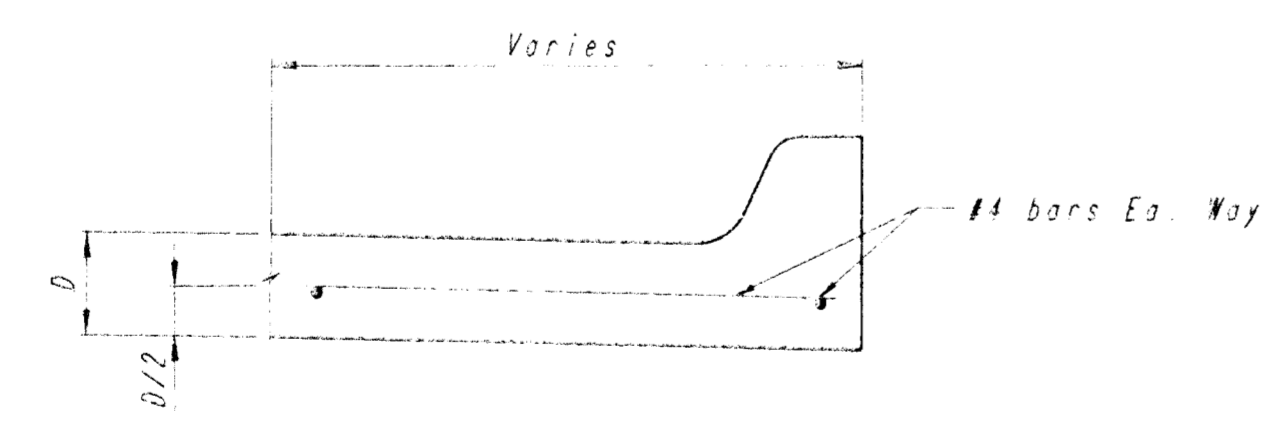


Sta. 12+44.00 @ Wild Rose
Sta. 30+00.00 @ Wild Rose Court

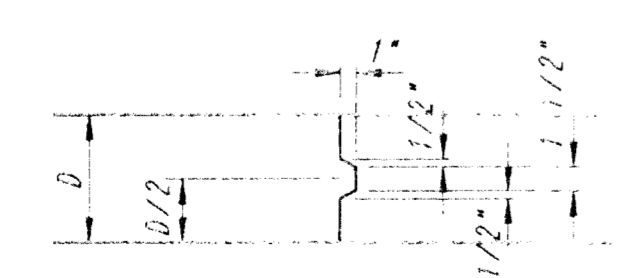
PLAN
REINFORCED VALLEY GUTTER



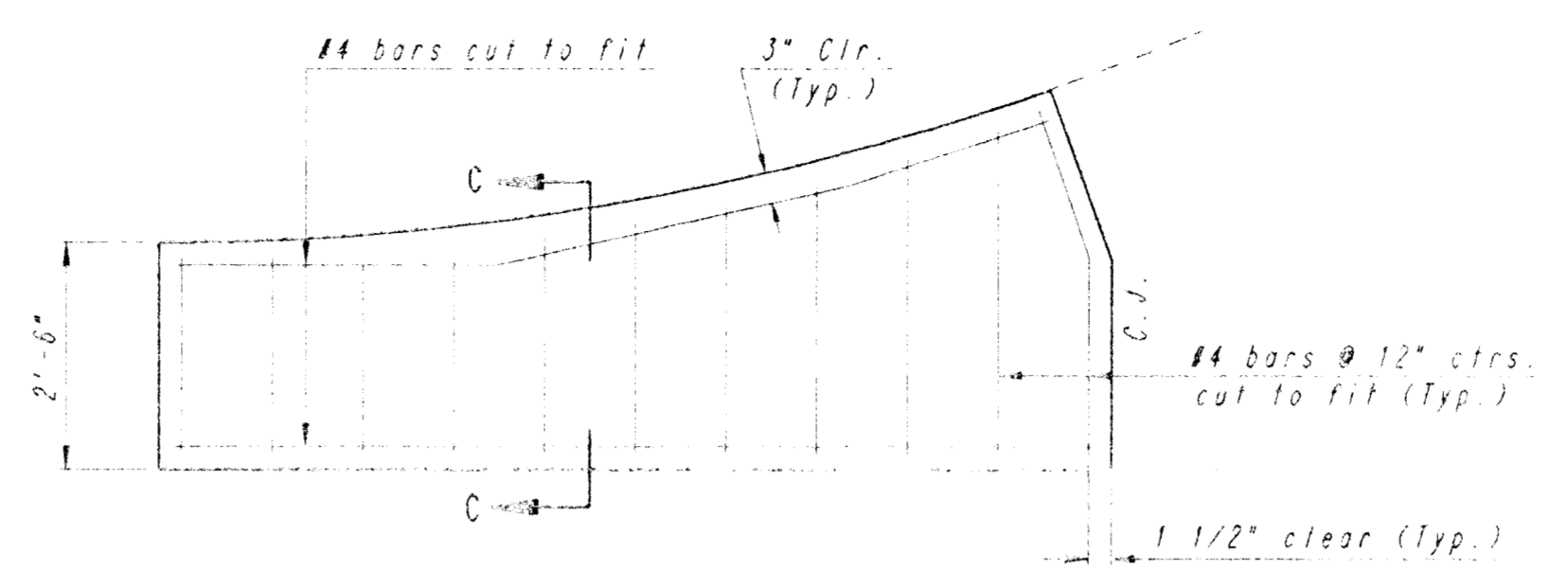
SECTION A-A
NOTE: SAW REINFORCING MESH AT ALL JOINTS
NOTE: ALL CONCRETE VALLEY GUTTER REINFORCEMENT SHALL BE ADEQUATELY SUPPORTED BY BARS OR ADS AT THE REQUIRED POSITION UNLESS APPROVED OTHERWISE BY THE ENGINEER



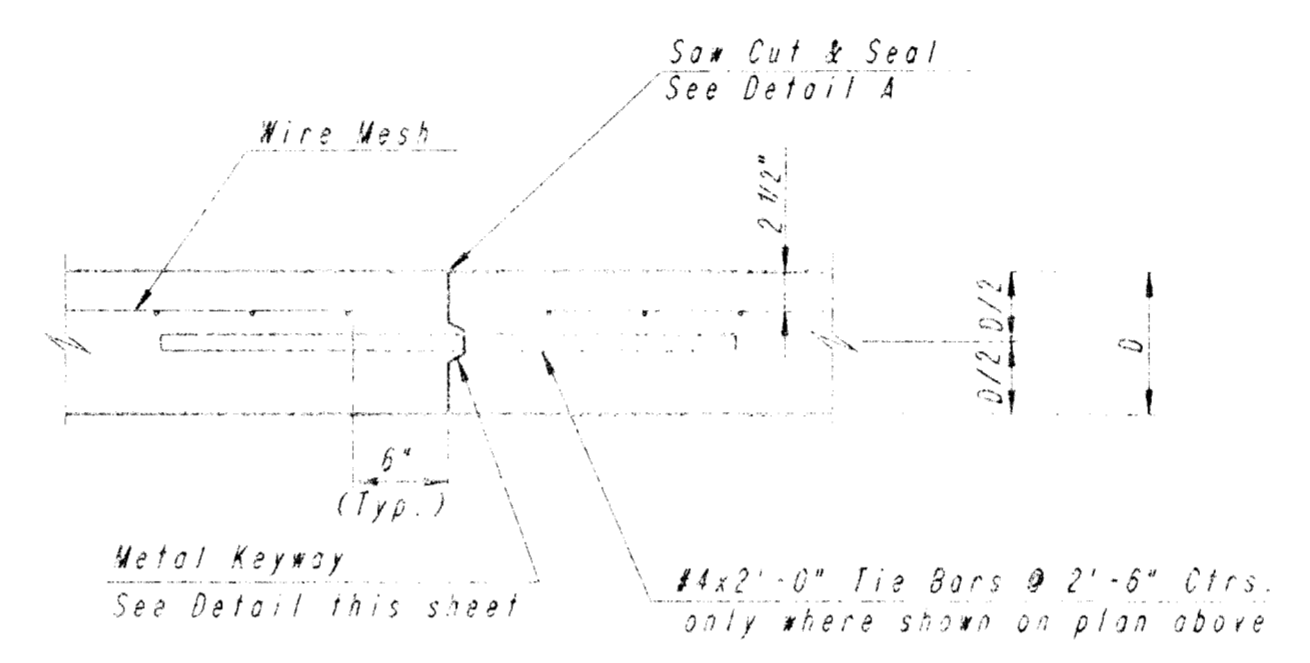
SECTION C-C



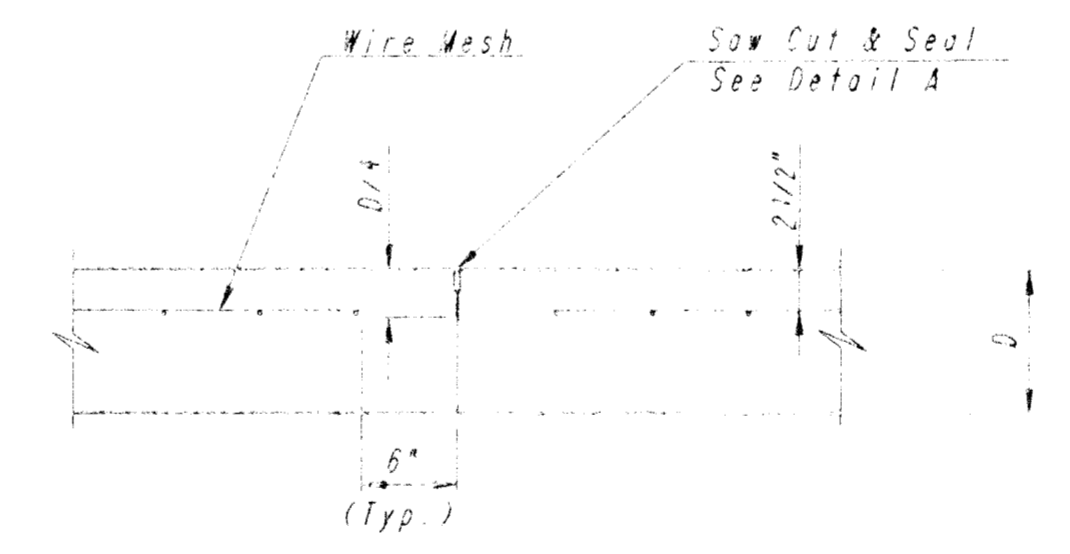
KEYWAY DETAIL



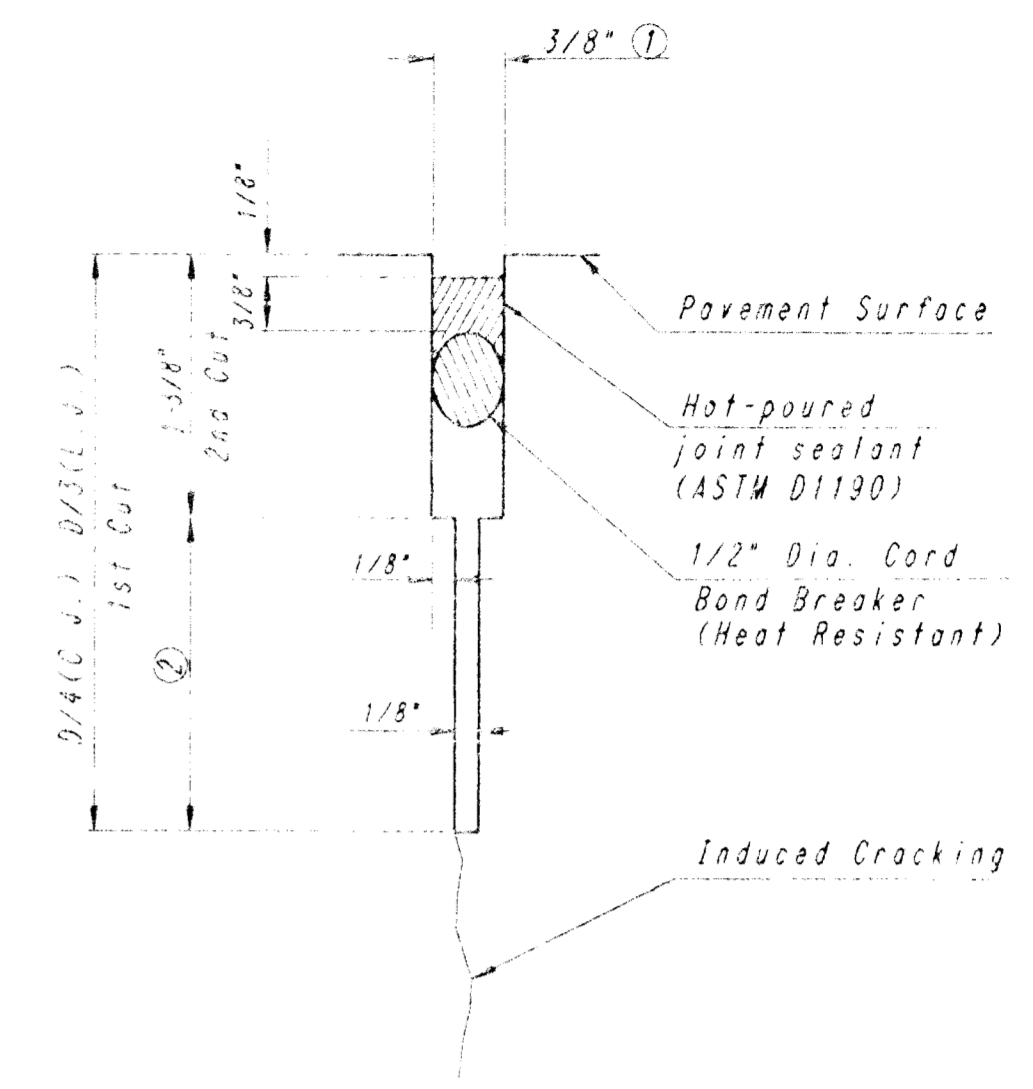
WING REINFORCING DETAIL
NOTE: SAW WIRE FABRIC REINFORCING IN THIS SECTION



LONGITUDINAL CONSTRUCTION JOINT DETAIL
REINFORCED PAVEMENT
(TRANSVERSE SECTION)
(ALTERNATE L.J.)

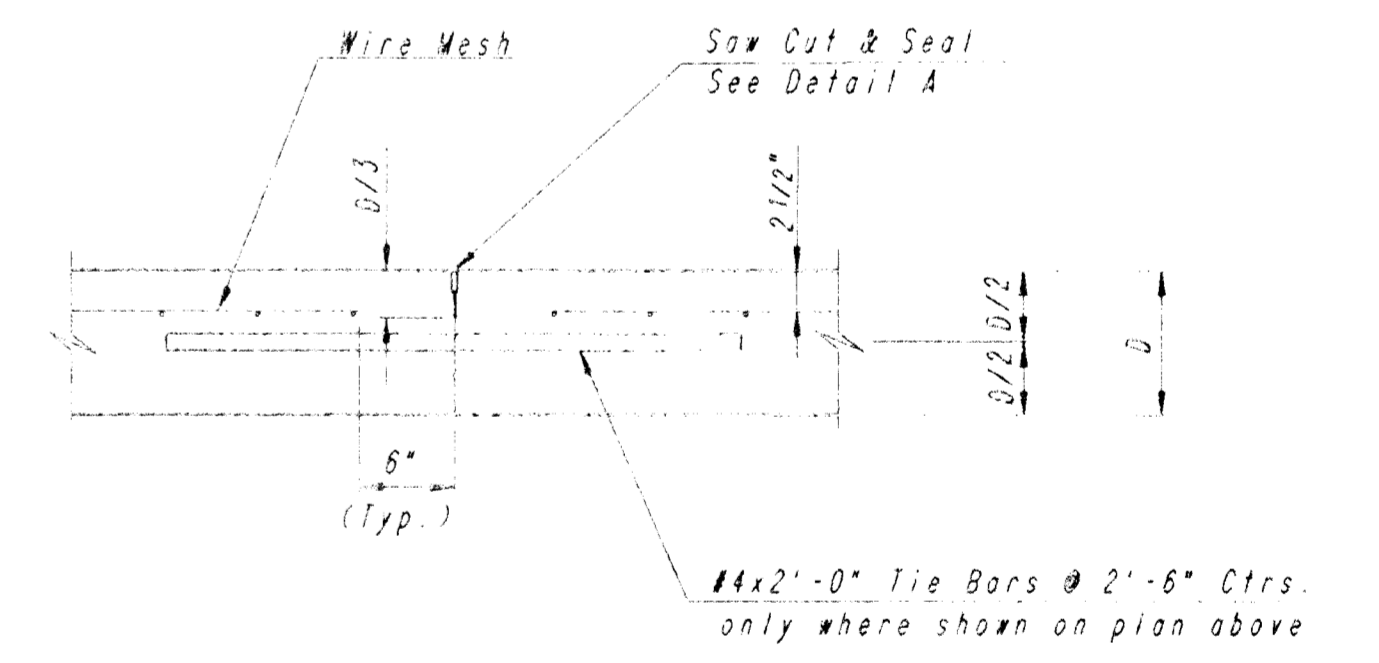


CONTRACTION JOINT DETAIL
REINFORCED PAVEMENT
(C.J.)

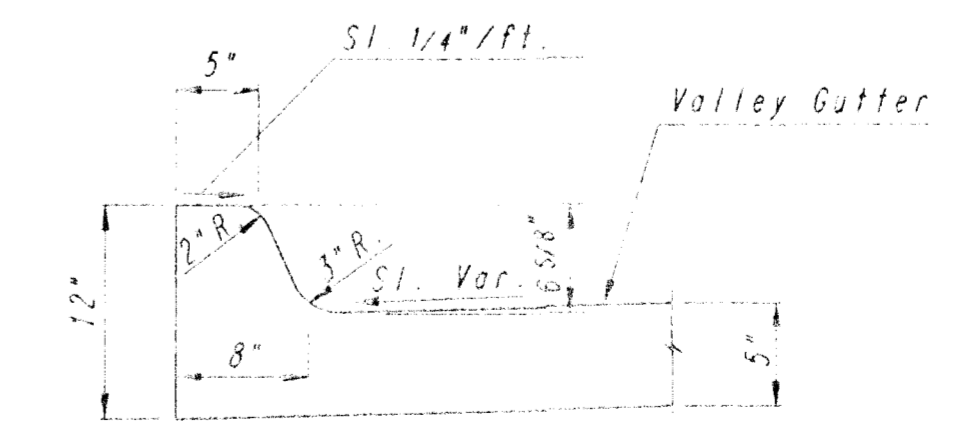


DETAIL A

- To be accomplished in 2 cuts for Longitudinal Joints & Contraction Joints. Initial cut to be 1/8" wide.
- Eliminate bottom of cut when metal keyway is used as part of Longitudinal or Transverse Construction Joint and at Doweled Construction Joint Locations.



LONGITUDINAL JOINT DETAIL
REINFORCED PAVEMENT
(TRANSVERSE SECTION)
(L.J.)



DETAIL B

FOREST LAKES
PHASE NO. 7

VALLEY GUTTER DETAILS

PROFESSIONAL ENGINEERING CONSULTANTS, P.A.
ENGINEERS
WICHITA, KANSAS

Designed by	WKS, ODD	Checked by	
Drawn by	DEP	Date	FEB. 1994
		Job No.	93594

PLAN	DATE
BY	
CHECKED	
NO.	
REL. TO WAY CHECKED	

DRAWING NAME: 27-54564 VAL GUT D11
DRAWN BY: WKS, ODD
CHECKED BY: DEP
DATE: 12/15/93
DATE LAST WORKED ON: