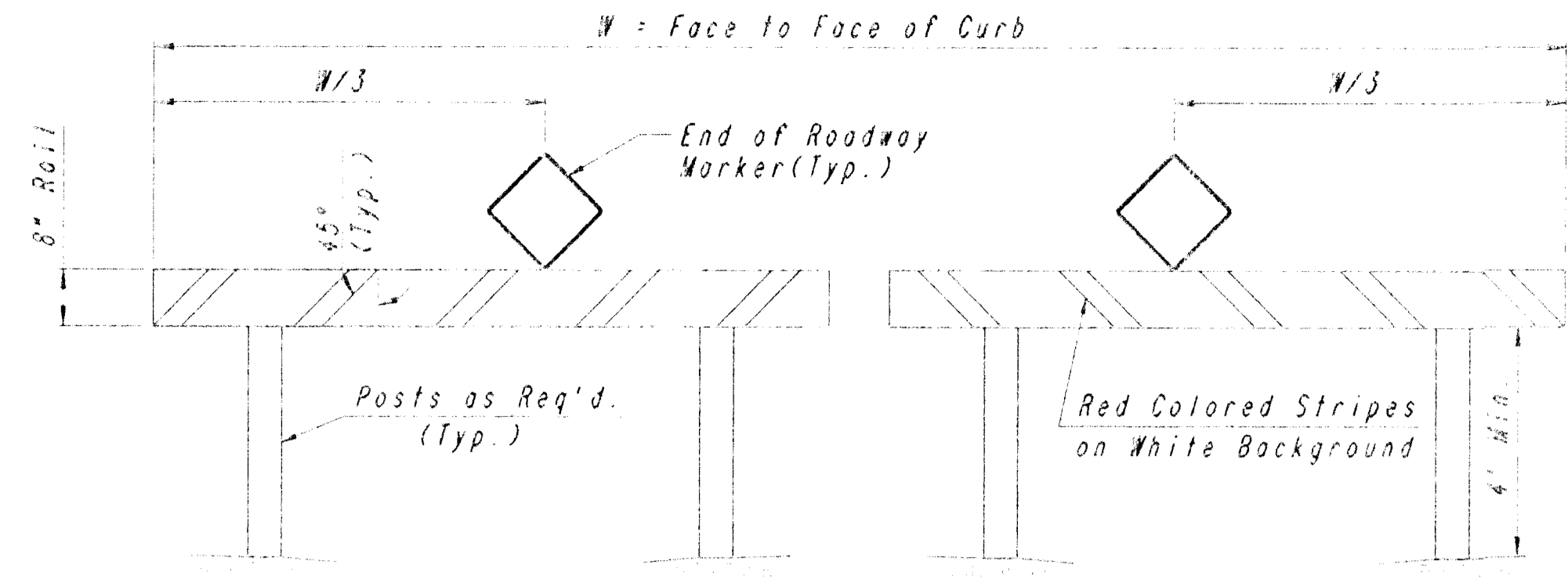


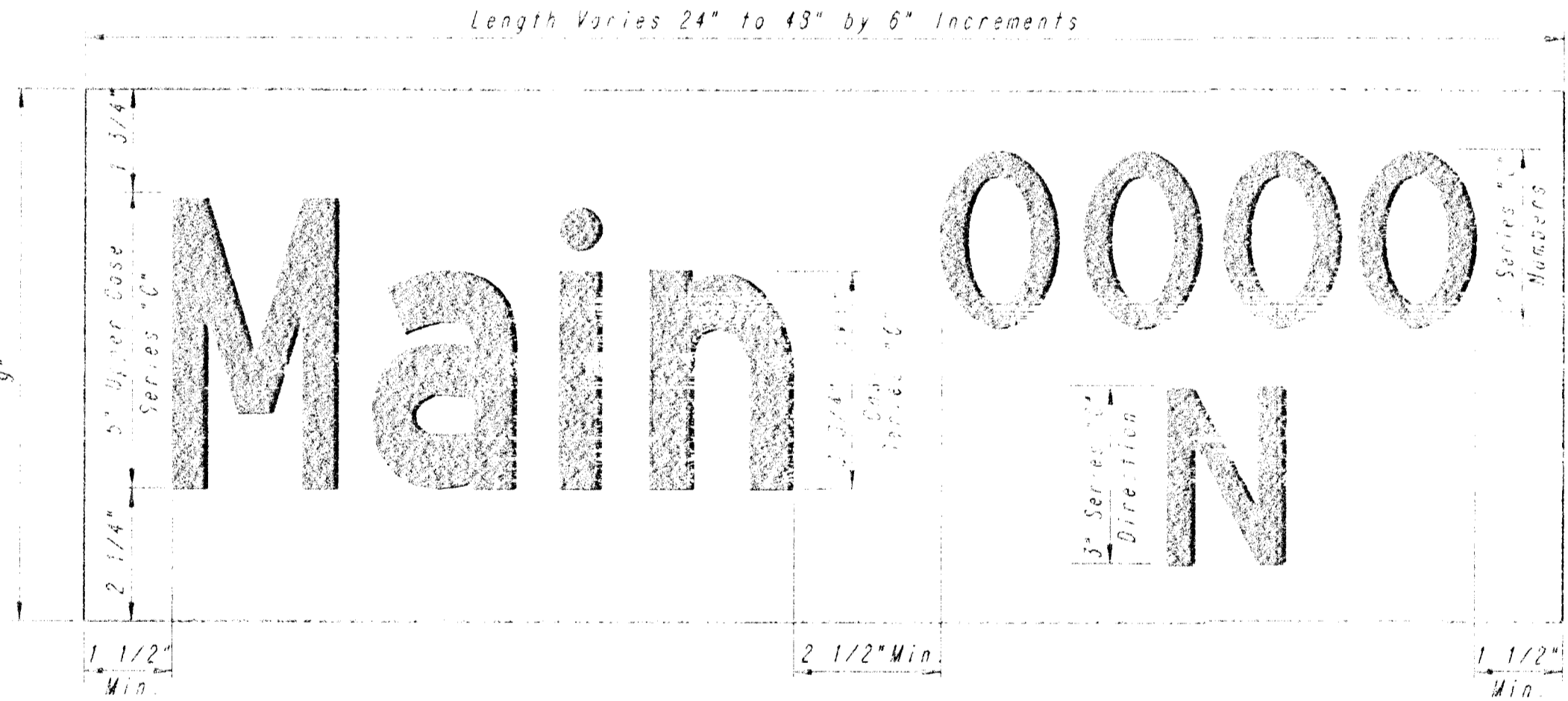
TYPICAL TRAFFIC CONTROL SIGN INSTALLATION
CURB AND GUTTER SECTION



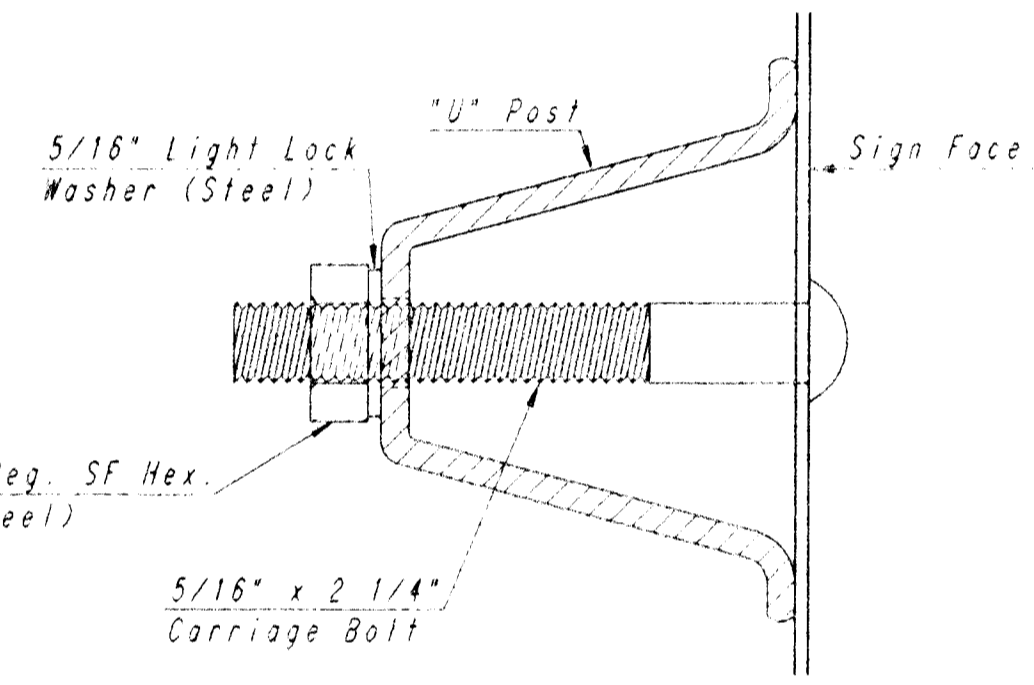
TYPE I BARRICADE DETAIL W/ E.O.R. MARKER



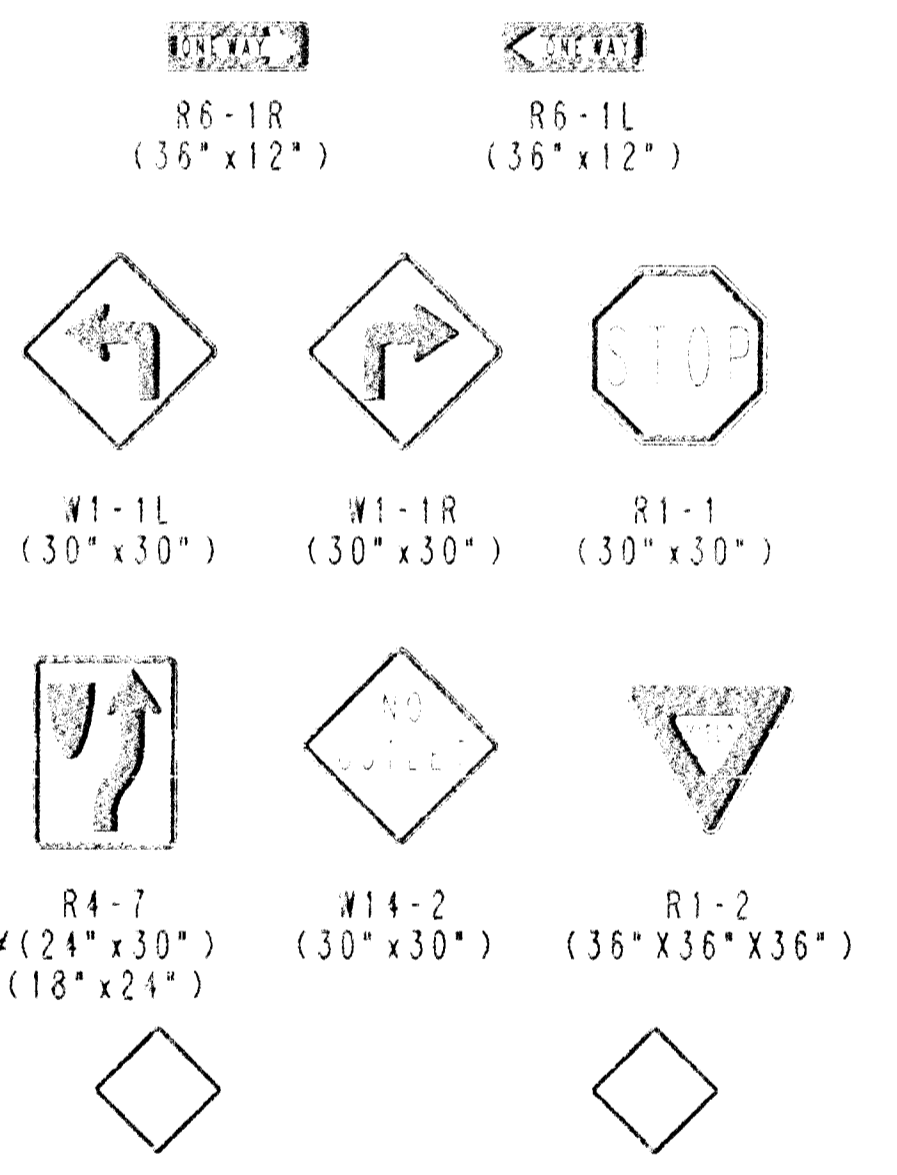
DETAIL A
6 3/4" STANDARD



DETAIL B
9" METRO



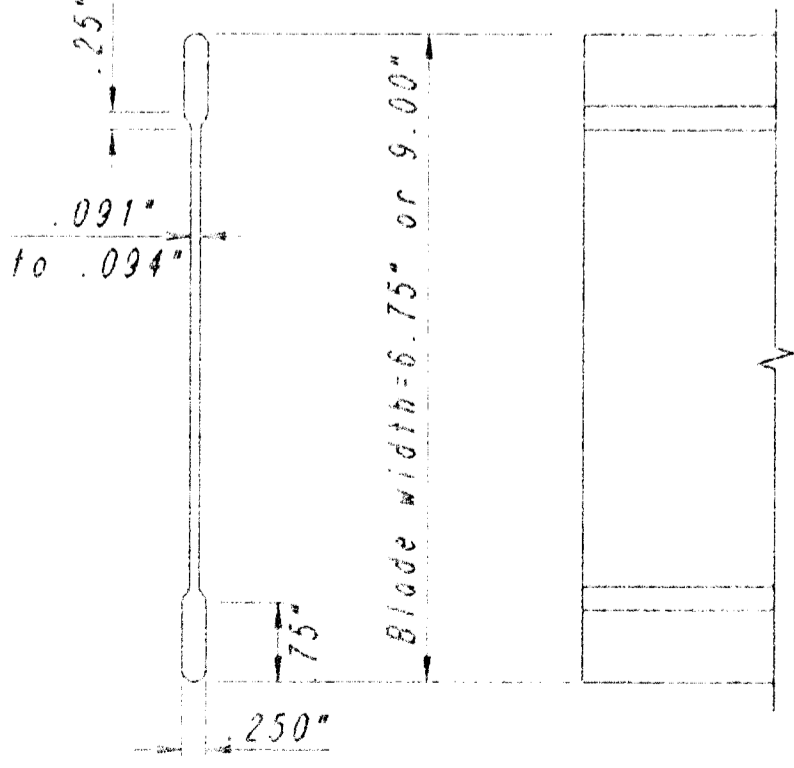
TRAFFIC CONTROL SIGN MOUNTING DETAIL



END OF ROAD MARKER EOR (18" x 18") (RED)
TYPE I OBJECT MARKER I/O/M (18" x 18") (YELLOW)

STREET	STATION	OFFSET	SIGN	QUANTITY	##
WILD ROSE	10+40	50' RT	STREET NAME	1	
WILD ROSE	10+54	77' RT	R1-1	1	
WILD ROSE	10+54	16' RT	R4-7 & I/O/M	1	
WILD ROSE	11+00	49' RT	R1-1	1	
WILD ROSE	11+30	53' RT	R1-1	1	
WILD ROSE	12+00	74' RT	STREET NAME	1	
WILD ROSE	14+75	0' RT	STREET NAME	1	
WILD ROSE #	14+84	8' LT	EOR	1	
WILD ROSE #	14+84	8' RT	EOR	1	
TOTAL				9	

* THESE ARE SUBJECT TO 100% UNDERPIN SHOULD PHASE B (PROJ. NO. 412-82323) BE CONSTRUCTED CONCURRENTLY WITH THIS PROJECT
** FOR INFORMATION ONLY



STREET NAME SIGN
BLADE DETAILS

STREET NAME	NO. BLADES REQ'D
20TH ST (17500)	6 3/4" STD 9" METRO
Wild Rose (13000N)	
Wild Rose	
Wild Rose Ct (1000-3000)	
Wild Rose Ct (1000-3000)	

GENERAL NOTES - SIGNING

- NOTE: REFERENCES BELOW TO "STANDARD SPECIFICATIONS" DENOTE "STANDARD SPECIFICATION FOR STATE ROAD AND BRIDGE CONSTRUCTION, EDITION 1990" BY THE KANSAS DEPARTMENT OF TRANSPORTATION.
- POST ANCHORS: POSTS SHALL BE ANCHORED WITH A YIELDING BASE POST ANCHOR AS DETAILED.
 - POSTS FOR TRAFFIC CONTROL SIGNS: POSTS SHALL CONFORM TO THE REQUIREMENTS OF SUBSECTION 1620 OF THE STANDARD SPECIFICATIONS EXCEPT THAT ALL POSTS SHALL WEIGH 3 LBS PER FOOT MINIMUM.
 - POSTS FOR STREET NAME SIGNS: POSTS SHALL BE 9 FEET LONG CONSTRUCTED FROM 2 3/8" O.D. GALVANIZED STEEL PIPE WEIGHING A MINIMUM OF 3.65 POUNDS PER FOOT. POSTS SHALL BE POSITIONED SO THAT THE BOTTOM BLADE IS 7 FEET ABOVE GRADE.
 - SIGN BLANKS FOR TRAFFIC CONTROL SIGNS: SIGN BLANKS SHALL BE FABRICATED FROM 0.030" ALUMINUM ALLOY RODS CONFORMING TO THE REQUIREMENTS OF SUBSECTION 1626 OF THE STANDARD SPECIFICATIONS.
 - SIGN BLADES FOR STREET NAME SIGNS: EXTRUDED ALUMINUM BLADES SHALL BE ALUMINUM ALLOY CONFORMING TO 6061-T6 OR 6052-H38 FASTW SPECIFICATION BEH. 1/8" THICK. BLADES SHALL HAVE AN ALUMINE OR PHOSPHATE ETCHED FINISH. BLADES SHALL HAVE SQUARE CORNERS AND NO HOLES.
 - BLADES BEARING THE STREET NAME SHALL BE FIRMLY ATTACHED TO THE MOUNTING BRACKET USING ALLEN-TYPE SET SCREWS. THE BLADES SHALL BE ORIENTED PARALLEL TO THE STREET.
 - MOUNTING BRACKETS FOR STREET NAME SIGNS: DIE-CAST ALUMINUM BRACKETS SHALL BE 1/8" THICK ALUMINUM ALLOY HAVING A TENSILE STRENGTH OF 35,000 PSI. BRACKETS SHALL BE SMOOTHLY FINISHED TOP AND BOTTOM SURFACES AND POLISHED BRACKETS SHALL BE POLISHED AND PROVIDED FOR SET SCREWS AND ALLEN-TYPE SET SCREWS HAVING SELF-LOCKING SMOOTH ENDS.
 - FASTENERS: ALL STEEL FASTENERS FOR TRAFFIC CONTROL SIGNS SHALL BE GALVANIZED AND SHALL CONFORM TO THE REQUIREMENTS OF SUBSECTION 1614 OF THE STANDARD SPECIFICATIONS.
 - REFLECTIVE SHEETING: REFLECTIVE SHEETING SHALL BE TYPE II - HIGH PERFORMANCE CLASS HA IN ACCORDANCE WITH SUBSECTION 2201 OF THE STANDARD SPECIFICATIONS.
 - PROCESS INK: ALL PROCESS INK SHALL CONFORM TO THE REQUIREMENTS OF SUBSECTION 2232 OF THE STANDARD SPECIFICATIONS.
 - DETAILS: REGULATORY AND WARNING SIGNS SHALL CONFORM TO THE DETAILS IN "STANDARD HIGHWAY SIGNS", FHWA, 1979.
 - DETAILS - STREET NAME SIGNS: THE REFLECTIVE SHEETING FOR THE 6 3/4" STANDARD SIZE STREET NAME SIGN IS TO BE HIGHWAY GREEN REVERSE SCREENED BACKGROUND WITH SILVER-WHITE #2 COPY WITH 4" UPPER CASE AND 3" LOWER CASE PRIMARY COPY AND SUFFIX COPY. BOTH SERIES #2 AND #3 WHERE SUFFIX LETTERS ARE USED ON NUMBERED STREETS, SUCH AS RD. 14, ETC. THEY SHALL BE 1/2" LOWER CASE SERIES "C" LETTERS. BLOCK NUMBERS SHALL BE 1/2" LOWER CASE SERIES "C" LETTERS. BLOCK NUMBERS SHALL BE 1/2" LOWER CASE SERIES "C" LETTERS. HOUSE NUMBERS SHALL BE 1/2" LOWER CASE SERIES "C" LETTERS. (SEE DETAIL A.)
 - DETAILS - STREET NAME SIGNS: THE REFLECTIVE SHEETING FOR THE 9" METRO SIZE STREET NAME SIGN IS TO BE HIGHWAY GREEN REVERSE SCREENED BACKGROUND WITH SILVER-WHITE #2 COPY WITH 4" UPPER CASE AND 3" LOWER CASE PRIMARY COPY AND SUFFIX COPY. BOTH SERIES #2 AND #3 WHERE SUFFIX LETTERS ARE USED ON NUMBERED STREETS, SUCH AS RD. 14, ETC. THEY SHALL BE 1/2" LOWER CASE SERIES "C" LETTERS. BLOCK NUMBERS SHALL BE 1/2" LOWER CASE SERIES "C" LETTERS. HOUSE NUMBERS SHALL BE 1/2" LOWER CASE SERIES "C" LETTERS. (SEE DETAIL B.)
 - MOUNTING BLADE SHOWING BLOCK NUMBERS AND CARDINAL DIRECTION: THE REFLECTIVE SHEETING FOR THE 6 3/4" STANDARD SIZE STREET NAME SIGN IS TO BE HIGHWAY GREEN REVERSE SCREENED BACKGROUND WITH SILVER-WHITE #2 COPY WITH 4" UPPER CASE AND 3" LOWER CASE PRIMARY COPY AND SUFFIX COPY. BOTH SERIES #2 AND #3 WHERE SUFFIX LETTERS ARE USED ON NUMBERED STREETS, SUCH AS RD. 14, ETC. THEY SHALL BE 1/2" LOWER CASE SERIES "C" LETTERS. BLOCK NUMBERS SHALL BE 1/2" LOWER CASE SERIES "C" LETTERS. HOUSE NUMBERS SHALL BE 1/2" LOWER CASE SERIES "C" LETTERS. (SEE DETAIL A.)
 - MOUNTING BLADE SHOWING BLOCK NUMBERS AND CARDINAL DIRECTION: THE REFLECTIVE SHEETING FOR THE 9" METRO SIZE STREET NAME SIGN IS TO BE HIGHWAY GREEN REVERSE SCREENED BACKGROUND WITH SILVER-WHITE #2 COPY WITH 4" UPPER CASE AND 3" LOWER CASE PRIMARY COPY AND SUFFIX COPY. BOTH SERIES #2 AND #3 WHERE SUFFIX LETTERS ARE USED ON NUMBERED STREETS, SUCH AS RD. 14, ETC. THEY SHALL BE 1/2" LOWER CASE SERIES "C" LETTERS. BLOCK NUMBERS SHALL BE 1/2" LOWER CASE SERIES "C" LETTERS. HOUSE NUMBERS SHALL BE 1/2" LOWER CASE SERIES "C" LETTERS. (SEE DETAIL B.)
 - FOR COLLECTOR STREETS, A 9" METRO SIZE BLADE SHALL BE USED WITH THE HOUSE NUMBERS DISPLAYED BENEATH THE STREET NAME. LETTERING TO BE THE SAME AS FOR THE 6 3/4" SIZE BLADE, EXCEPT THAT THE HOUSE NUMBER INFORMATION SHALL BE 3" SERIES "C".
 - SHOP DRAWINGS OF LAYOUTS FOR STREET NAME SIGNS SHALL BE SUBMITTED TO THE TRAFFIC ENGINEERING DIVISION OF THE CITY OF WICHITA FOR APPROVAL PRIOR TO FABRICATION. THE FINISHED SIGNS AS SUPPLIED SHALL BE OF GOOD APPEARANCE, FREE FROM RAGGED EDGES, CRACKS, SPACES OR BUSTERS AND SHALL BE CLEAN/CUT. SIGNS SHALL BE PACKED IN SUCH MANNER AS TO PREVENT DAMAGE OR DEFACEMENT DURING SHIPMENT OR STORAGE.
 - TRAFFIC CONTROL AND STREET NAME SIGNS: TRAFFIC CONTROL AND STREET NAME SIGNS SHALL BE MEASURED AND PAID FOR AT THE UNIT PRICE PER LINE F.W. THE PAYMENT AS SET FORTH ABOVE SHALL BE CONSIDERED FULL COMPENSATION FOR ALL EXCAVATION, BACKFILLING, POSTS, ANCHORS, FASTENERS, MATERIALS, LABOR, TOOLS AND INCIDENTALS NECESSARY TO COMPLETE THIS WORK.

SIGNING DETAILS

PROFESSIONAL ENGINEERING CONSULTANTS, P.A.
ENGINEERS
WICHITA, KANSAS

Designed by: MWB: RDD
Drawn by: DEP
Checked by:
Date: FEB., 1994 Job No. 93594

BY: [Signature]
DATE: [Date]
CHECKED: [Signature]
DATE: [Date]

DRAWING NAME: 32-83694 SIGN DIES
LOCATION: DWG 2004
CENTER COORDINATES:
ROTATION ANGLE:
DATE LAST REVISED ON:
DRAWING QUANTITY: