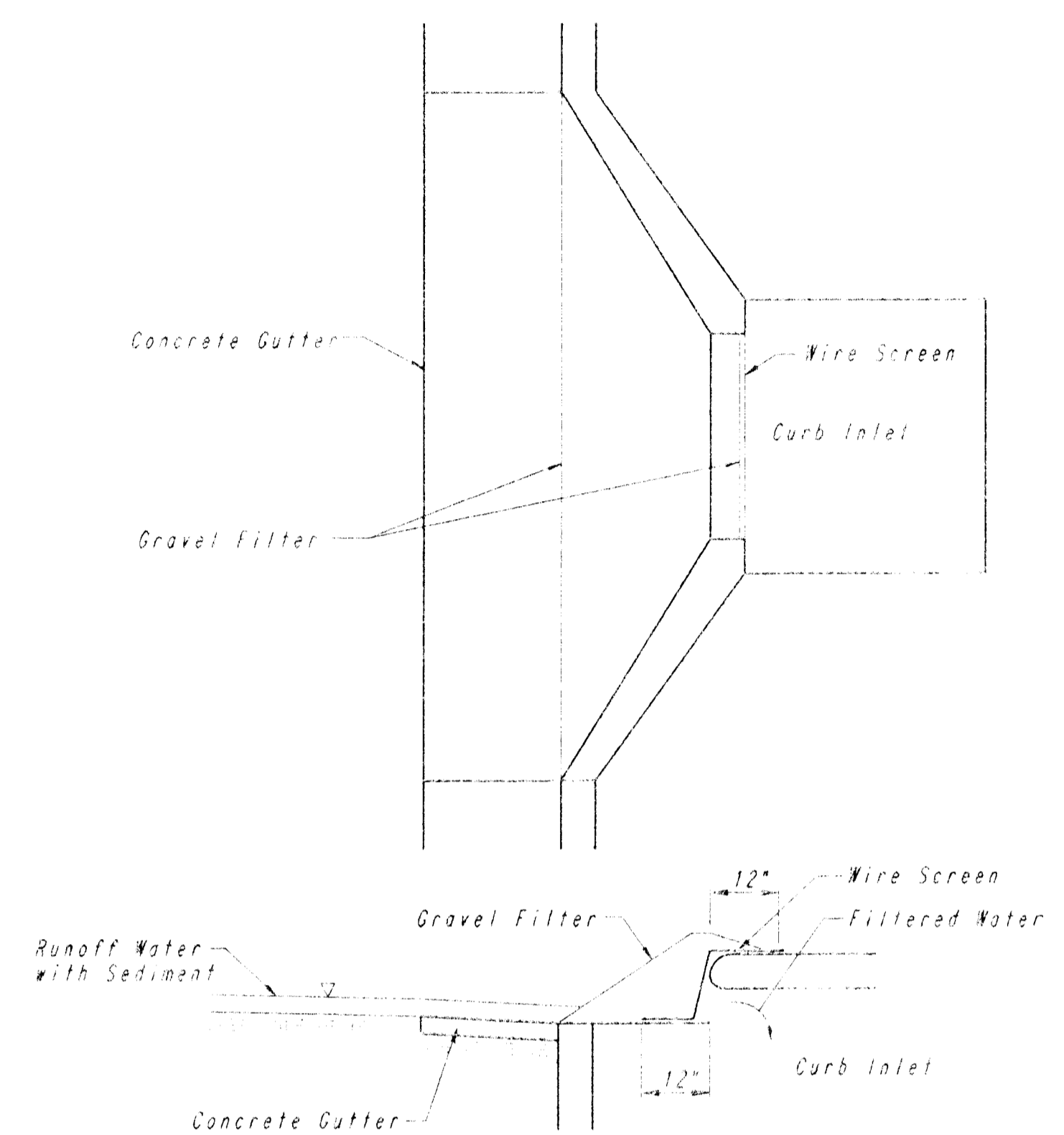


GENERAL NOTES

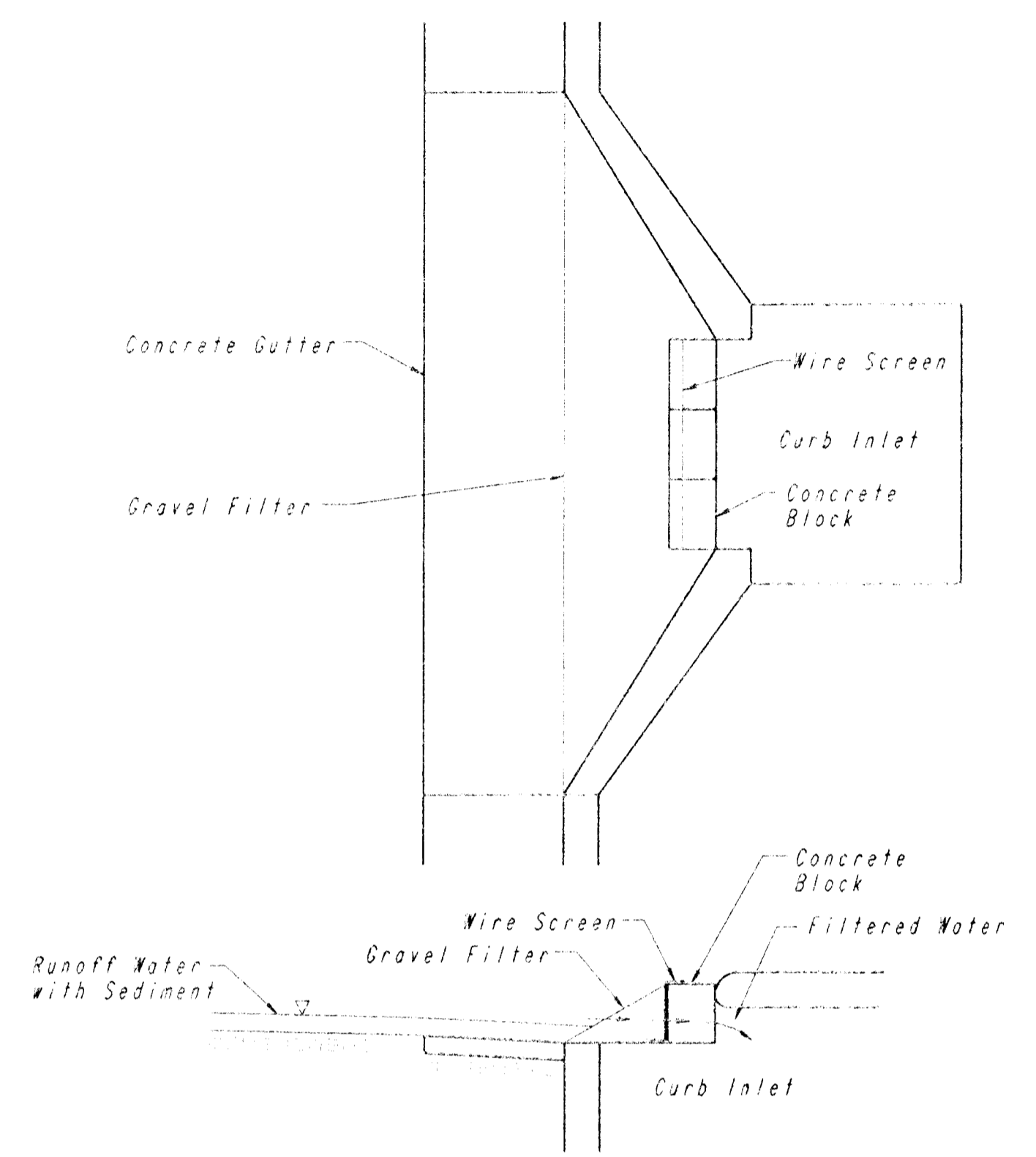
1. INLET PROTECTION METHOD MAY BE ANY OF THE APPLICABLE TYPES SHOWN, AT THE CONTRACTORS OPTION.
2. GRAVEL FILTER SHALL BE A DURABLE, WELL-GRADED SAND-GRAVEL OR CRUSHED STONE, MAXIMUM 1-1/2 IN. SIZE. AS AN ALTERNATE GRAVEL FILLED BAGS OF BURLAP OR OTHER FABRIC MAY BE USED. WHERE BAGS ARE USED, THE WIRE SCREEN, WHERE SHOWN, MAY BE OMITTED.
3. FILTER FABRIC, WHERE USED, SHALL BE RESISTANT TO ULTRAVIOLET LIGHT. MATERIALS MAY BE SUPPLIED BY THE FOLLOWING MANUFACTURERS:

MIRAFI, INC.	-	100X
HOECHST FIBERS INDUSTRIES	-	TRAVIRA 1115
EXXON	-	TYPAR 3301 W

MATERIALS SUPPLIED BY THE ABOVE NAMED MANUFACTURERS SHALL BE ACCEPTED UPON VISUAL INSPECTION BY THE ENGINEER. OTHER COMPARABLE MATERIALS MAY BE USED IF APPROVED BY THE ENGINEER.
4. INLET TYPE MAY VARY FROM THAT SHOWN.
5. INLET PROTECTION SHALL BE ERECTED AS SOON AS THE INLET HOOKUP HAS BEEN CONSTRUCTED. MEASURES SHALL BE TAKEN TO PRECLUDE ENTRY OF SEDIMENT INTO THE STORM WATER SEWER SYSTEM DURING STREET CONSTRUCTION.
6. REMOVAL AND DISPOSAL OF ACCUMULATED SILT AND DEBRIS AND/OR REMOVAL AND RECONSTRUCTION OF INLET PROTECTION INSTALLATIONS SHALL BE PERFORMED THROUGHOUT THE PROJECT LIFE WHENEVER DEBRIS REACHES ONE-THIRD THE BARRIER HEIGHT, OR AS DEEMED NECESSARY BY THE ENGINEER. ULTIMATE REMOVAL AND DISPOSAL OF INLET PROTECTION AND DEBRIS WILL BE PERFORMED BY THE DEVELOPER.
7. MEASUREMENT AND PAYMENT: THE ITEM "INLET PROTECTION" SHALL BE MEASURED AND PAID FOR AT THE CONTRACT UNIT PRICE BID PER EACH FOR EACH INLET LOCATION PROTECTED REGARDLESS OF METHOD SELECTED BY THE CONTRACTOR. SAID PRICE SHALL BE CONSIDERED FULL COMPENSATION FOR SEDIMENT, AND DEBRIS REMOVAL AND DISPOSAL, AND ALL LABOR, MATERIALS, TOOLS, AND INCIDENTALS NECESSARY TO COMPLETE THE WORK. RECONSTRUCTION OF INLET PROTECTION INSTALLATION DUE TO DAMAGE BY WIND, FLOOD, FIRE, ETC. OR DUE TO ACTIONS BY THE CONTRACTOR OR OTHERS SHALL BE PERFORMED BY THE CONTRACTOR AS DIRECTED BY THE ENGINEER AT NO ADDITIONAL COST.



CURB INLET PROTECTION
GRAVEL AND WIRE MESH FILTER



CURB INLET PROTECTION
BLOCK AND GRAVEL FILTER

PLAN	DRAWN	BY	DATE
NOTE BOOK	PLOTTED		
NO. 1	ALIGNMENT	CHECKED	
NO. 2	RT. WAY	CHECKED	

DRAWING MADE BY: J. D. ERSK
 CHECKED BY: J. D. ERSK
 DATE: 10/15/84
 SCALE: AS SHOWN
 DATE LAST WORKED ON: 10/15/84
 DRAWING NO. 93694

ADAPTED FROM: VIRGINIA SOIL AND WATER
 CONSERVATION COMMISSION, 1985 AND
 DRAINAGE CRITERIA MANUAL, DENVER URBAN
 DRAINAGE AND FLOOD CONTROL DISTRICT
 9-1-82

FOREST LAKES
 PHASE NO. 7

**SEDIMENT AND EROSION
 CONTROL STANDARD DETAILS
 INLET PROTECTION**

PROFESSIONAL ENGINEERING CONSULTANTS, P.A.
 ENGINEERS
 WICHITA, KANSAS

Designed by	WNB	Checked by	
Drawn by	DEP	Date	FEB 1994
		Job No.	93694