

J:\PROJECTS\2019\10483_COW_BOTANICA PARKING EXPANSION_190483 CAD\SHITS\05 CIVIL\PAV\190483-05-0000.DWG
 PLOTTED: Thursday, July 15, 2021 @ 11:21 AM

GENERAL NOTES

- THE CONTRACTOR SHALL COMPLY WITH ALL APPLICABLE SAFETY REGULATIONS. ALL CONSTRUCTION SHALL BE COMPLETED FOLLOWING CURRENT CITY STANDARD SPECIFICATIONS AND SPECIAL PROVISIONS.
- CONTRACTOR WILL BE REQUIRED TO PROVIDE NOTICE TO UTILITY COMPANIES A MINIMUM OF SEVENTY-TWO (72) HOURS PRIOR TO ANY EXCAVATION, AS FOLLOWS:
 KANSAS ONE-CALL 687-2470
 THE CONTRACTOR MUST NOTIFY THE FOLLOWING IN CASE OF AN EMERGENCY:

AT&T	1-316-246-8464
BLACK HILLS ENERGY (GAS)	1-800-694-8989
CITY OF WICHITA WATER & SEWER	1-316-219-8921
CITY OF WICHITA STORMWATER	1-316-268-4090
CITY OF WICHITA TRAFFIC	1-316-268-4034
COX COMMUNICATIONS	1-888-249-3530
KANSAS GAS SERVICE	1-888-482-4950
EVERGY	1-800-544-4857
- UTILITY SERVICE LINES, POLES, ETC. ARE TO BE ADJUSTED AS NECESSARY BY OTHERS PRIOR TO CONSTRUCTION UNLESS THE PLANS SPECIFICALLY CALL FOR THEIR ADJUSTMENT BY THE CONTRACTOR OR UNLESS THE PLANS SPECIFICALLY IDENTIFY A UTILITY TO BE ADJUSTED BY ITS OWNER DURING CONSTRUCTION. EXISTING UTILITIES AND THEIR LOCATION, AS SHOWN ON THE PLANS, REPRESENT THE BEST INFORMATION OBTAINABLE FOR DESIGN. THE CONTRACTOR WILL BE REQUIRED TO WORK AROUND EXISTING UTILITIES WITHIN THE RIGHT-OF-WAY WHICH DO NOT CONFLICT WITH PROPOSED CONSTRUCTION.
- RUBBLE FROM THE REMOVAL OF MISCELLANEOUS STRUCTURES AND EXCESS EXCAVATION WHICH IS TO BE WASTED SHALL BE DISPOSED OF ON SITES TO BE PROVIDED BY THE CONTRACTOR. THESE SITES SHALL BE APPROVED BY THE ENGINEER AS TO SUITABILITY, APPEARANCE AND SITE LOCATION. LOCATIONS, IN THE OPINION OF THE ENGINEER, THAT WILL LEAVE AN UNSIGHTLY APPEARANCE WILL NOT BE APPROVED. ALL DISPOSAL SITES MUST BE APPROVED BY THE KANSAS DEPARTMENT OF HEALTH AND ENVIRONMENT. MATERIAL EITHER STOCKPILED OR DISPOSED OF IN A FLOOD PLAIN WILL REQUIRE A KANSAS STATE BOARD OF AGRICULTURE PERMIT. ANY MATERIAL DUMPED IN WATERS OF THE UNITED STATES OR WETLANDS IS SUBJECT TO U.S. CORPS OF ENGINEERS PERMITTING REGULATIONS. ANY MATERIAL BURIED OR STOCKPILED BEYOND APPROVED CONSTRUCTION LIMITS WILL REQUIRE ADDITIONAL ARCHAEOLOGICAL INVESTIGATIONS UNLESS BURIED IN A PREVIOUSLY APPROVED BORROW LOCATION.
- TREES AND SHRUBS IN PUBLIC RIGHT-OF-WAY WHICH ARE IN DIRECT CONFLICT WITH PROPOSED NEW CONSTRUCTION SHALL BE REMOVED BY THE CONTRACTOR WITH THE CITY ENGINEER'S APPROVAL. TREES AND SHRUBS WHICH ARE NOT IN DIRECT CONFLICT WITH PROPOSED NEW CONSTRUCTION SHALL BE SAVED AND PROTECTED FROM DAMAGE.
- THE CONTRACTOR SHALL GIVE ALL PROPERTY OWNERS AND/OR TENANTS OF DEVELOPED PROPERTY ABUTTING THE CONSTRUCTION OF THIS PROJECT A MINIMUM OF TEN (10) DAYS NOTICE PRIOR TO START OF CONSTRUCTION.
- THE CONTRACTOR SHALL BE RESPONSIBLE FOR PRESERVING PROPERTY IRONS. THE CONTRACTOR WILL BE REQUIRED TO RE-ESTABLISH ANY PROPERTY IRONS WHICH ARE DAMAGED OR DESTROYED BY HIS CONSTRUCTION OPERATIONS. SUCH IRONS SHALL BE RE-ESTABLISHED BY A LICENSED LAND SURVEYOR IN ACCORDANCE WITH STATE LAWS.
- IF TRAFFIC WILL BE IMPACTED BY CONSTRUCTION, A TRAFFIC CONTROL PLAN MUST BE SUBMITTED AND APPROVED BY THE CITY TRAFFIC ENGINEER. AT traffic@wichita.gov BEFORE CONSTRUCTION CAN BEGIN. THE CONTRACTOR SHALL BE RESPONSIBLE FOR ALL TRAFFIC CONTROL MEASURES TO FACILITATE CONSTRUCTION. ALL CONSTRUCTION ZONE MARKINGS AND SIGNAGE SHALL CONFORM TO THE LATEST VERSION OF THE MANUAL ON UNIFORM TRAFFIC CONTROL DEVICES (MUTCD) AS PUBLISHED BY THE US DEPT. OF TRANSPORTATION. FEDERAL HIGHWAY ADMINISTRATION. ALL COSTS ASSOCIATED WITH CONSTRUCTION MARKINGS AND SIGNAGE SHALL BE THE CONTRACTOR'S RESPONSIBILITY.
- THE ENGINEERING DIVISION SHALL FIELD LOCATE WATER VALVES ONE TIME DURING CONSTRUCTION WHEN REQUESTED BY THE CONTRACTOR. IT SHALL BE THE CONTRACTOR'S RESPONSIBILITY TO PRESERVE SUCH FIELD LOCATIONS DURING THE CONSTRUCTION PROCESS. WATER VALVES, VALVE BOXES OR FIRE HYDRANTS DAMAGED DURING CONSTRUCTION SHALL BE REPAIRED BY CONTRACTOR AT HIS OWN EXPENSE. VALVE BOXES AND WATER METERS WITHIN THE PROJECT LIMITS SHALL BE ADJUSTED TO MATCH FIELD GRADES BY THE CONTRACTOR.
- THE CONTRACTOR SHALL NOTIFY THE INSPECTING ENGINEER AT 316-268-4574 WITH THE CITY OF WICHITA WITH THE ANTICIPATED CONSTRUCTION START DATE AND NOTIFY THEM OF PROJECT COMPLETION. STAKING AND INSPECTION FOR THIS PROJECT WILL BE THE RESPONSIBILITY OF THE CONTRACTOR.
- ALL AREAS DISTURBED DURING CONSTRUCTION THAT WILL NOT BE UNDER PROPOSED PAVEMENT SHALL BE SEEDED AND MULCHED. COST SHALL BE CONSIDERED SUBSIDIARY TO PROJECT SEEDING.
- CONTRACTOR SHALL LIMIT THE EXTENT OF TRENCH OPEN OVERNIGHT AND WEEKENDS TO LESS THAN 50 FEET.
- EXISTING UTILITIES AND THEIR LOCATION, AS SHOWN ON THE PLANS REPRESENT THE BEST INFORMATION OBTAINABLE FOR DESIGN. LOCATION INFORMATION HAS BEEN OBTAINED FROM THE VARIOUS COMPANIES UTILITY COMPANY UTILITY DRAWINGS OR COMPANY PROVIDED FIELD LOCATIONS. THE PLAN LOCATIONS SHOWN ARE NOT GUARANTEED. ADDITIONAL EXISTING UTILITIES MAY ALSO BE ENCOUNTERED.
- CONTRACTOR SHALL CONTACT EVERGY WHEN WORKING NEAR OVERHEAD TRANSMISSION LINE.
- ALL TRAFFIC CONTROL DEVICES IN THE WORK ZONE (INCLUDING MARKINGS AND SIGNS) AND THEIR INSTALLATION AND MAINTENANCE SHALL COMPLY WITH THE LATEST EDITION OF THE MANUAL ON UNIFORM TRAFFIC CONTROL DEVICES (MUTCD). ALL TRAFFIC CONTROL DEVICES IN THE TRAVELED WAY OR CLEAR ZONE SHALL BE CRASHWORTHY (NCHRP REPORT 350 OR MASH COMPLIANT). https://safety.thwa.dot.gov/roadway_dept/countermeasures/reduce_crash_severity/
- ALL CONSTRUCTION EQUIPMENT, INCLUDING VEHICLES, MATERIALS, AND DEBRIS, SHALL BE STORED OUTSIDE OF THE CLEAR ZONE. WHERE THIS CANNOT BE ACHIEVED THE CONTRACTOR SHALL PLACE APPROPRIATE SIGNS, OBJECT IDENTIFIERS, AND/OR BARRICADES IN COMPLIANCE WITH MUTCD.
- EXCEPT WHEN REQUIRED FOR SAFETY, TRAFFIC CONTROL SHALL NOT BLOCK ANY LANES OR SIDEWALKS WHEN WORK IS NOT BEING PERFORMED.
- THIS PROJECT INCLUDES A CERTAIN AMOUNT OF ROLL TYPE CURB CONSTRUCTION. ROLL CURBS SHALL BE DEPRESSED THROUGH ALL DRIVEWAY OPENINGS WHEN SUCH DRIVES ARE CONSTRUCTED AS A PART OF THE PROJECT. NO MORE THAN 2 DRIVES 20 FEET IN WIDTH OR EQUIVALENT COMBINATIONS THEREOF ARE TO BE CONSTRUCTED WITH THIS PROJECT.
- TRANSITION CURB FROM FULL HEIGHT COMBINATION CURB AND GUTTER TO ROLL TYPE COMBINATION CURB AND GUTTER IS TO BE PAID AS BID FOR LINEAL FEET COMBINED CURB AND GUTTER (3 5/8" ROLL).
- A SAW CUT OF AT LEAST ONE-HALF THE DEPTH OF THE EXISTING SURFACE COURSES OR ONE-FOURTH THE DEPTH OF THE EXISTING TOTAL PAVEMENT THICKNESS SHALL BE PROVIDED AT LOCATIONS WHERE PROPOSED CONSTRUCTION ABUTS AN EXISTING SURFACE OR PAVEMENT FOR WHICH PARTIAL REMOVAL OF THAT SURFACE OR PAVEMENT IS REQUIRED. SAW JOINT TO FACILITATE REMOVAL WITHIN THREE (3) FEET OF EXISTING JOINTS WILL NOT BE PERMITTED AND FOR SUCH INSTANCES THE LIMITS OF REMOVAL SHALL EXTEND TO THE EXISTING JOINT. SUCH SAW CUTS WILL NOT BE PAID FOR DIRECTLY AND THIS COST SHALL BE CONSIDERED AS SUBSIDIARY TO THE REMOVAL OF SURFACE OR PAVEMENT.
- FOLLOW THE LINK BELOW FOR CONSTRUCTION DETAILS ON SPECIFIC CITY OF WICHITA STANDARD DETAILS: <http://www.wichita.gov/PWU/Pages/Regulations.aspx>
- DEVELOPER FOR THIS PROJECT IS:
 BOTANICA
 701 AMIDON
 WICHITA, KS. 67203
 MARTY MILLER
 316-264-0448

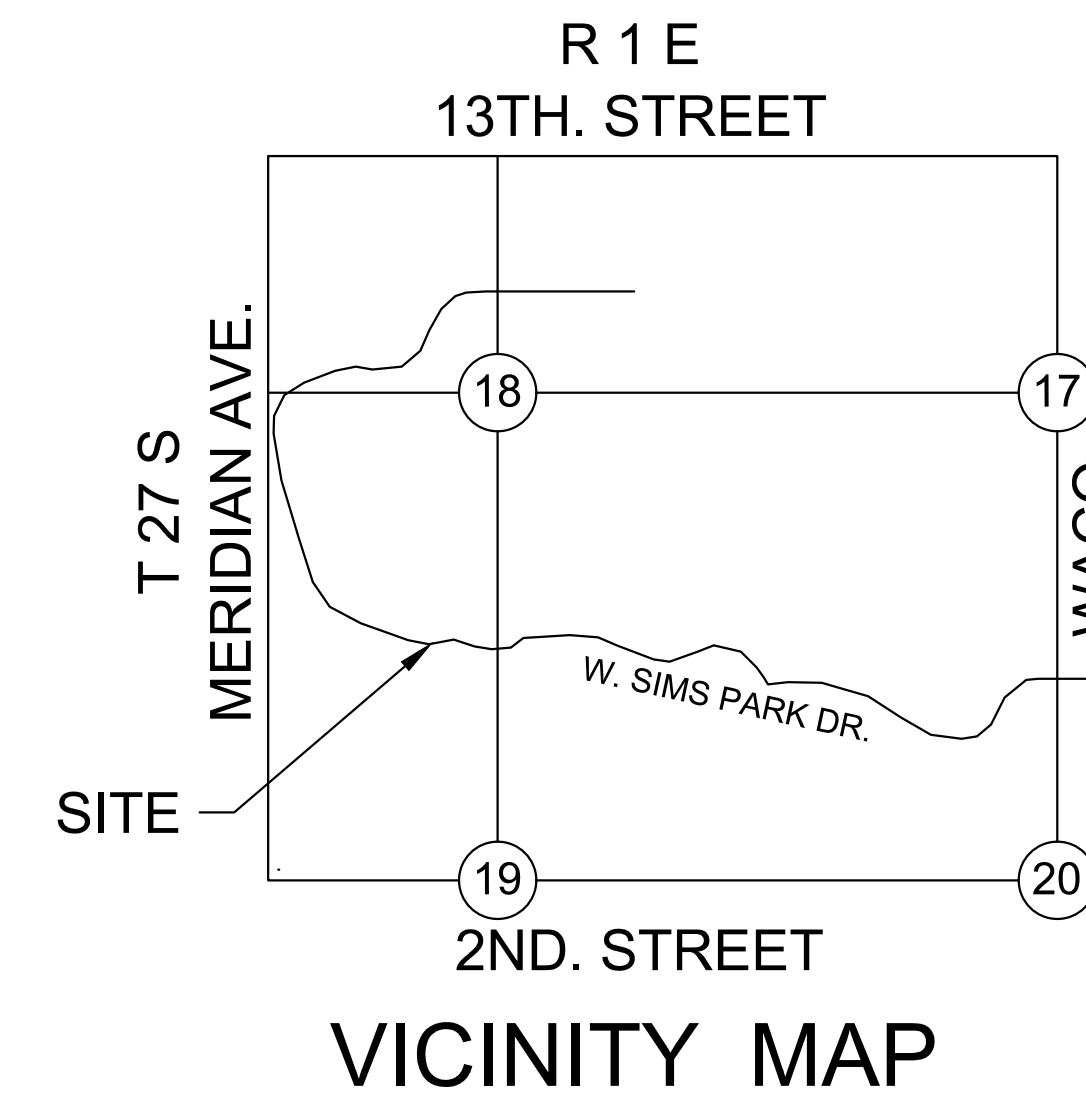
PAVING PLANS FOR BOTANICA GARDENS PARKING LOT

PROJECT NO. 482-11034

AN ADDITION TO THE CITY OF WICHITA, SEDGWICK COUNTY, KANSAS
 GARY JANZEN, P.E. - CITY ENGINEER

ORG CODE 43509919

MUNIS NO. X9001



VICINITY MAP

No Scale

INDEX TO DRAWINGS

SHEET NO.	DESCRIPTION
01	TITLE SHEET
02	DEMOLITION PLAN
03-06	PAVING DETAILS
07-09	GRADING PLANS
10-11	SURFACING PLANS
12-15	STORM WATER DETAILS
16-18	SWS PLANS
19	ECP/EASEMENT GRADING
20-22	BUBBLE MAP
23-27	BMP SHEETS
28	ELECTRICAL COVERSHEET
29-30	ELECTRICAL CONDUIT PLANS
31	ELECTRICAL DETAILS AND SCHEDULES

BENCHMARKS

Survey Control
 1901010483 Botanica Parking Lot Expansion

Datum:

The Horizontal Datum is based on the Kansas Coordinate System of 1983(2011), South Zone. Coordinates shown have been modified to the ground using a combined adjustment factor of 1.0001200144. State Plane coordinates can be calculated by multiplying the shown values by 0.99988.

All elevations shown are based on the NAVD 88 vertical datum.

Control Points (GND):

CP 54
 N: 1688902.198 E: 1640413.325 EL: 1302.000
 Description of control point: 5/8" rebar w/ red MKEC Control Pt. ID cap

CP 55
 N: 1688782.846 E: 1640832.782 EL: 1301.035
 Description of control point: 5/8" rebar w/ red MKEC Control Pt. ID cap

CP 56
 N: 1688987.420 E: 1640170.666 EL: 1307.630
 Description of control point: PKNail w/ MKEC ID washer

CP 57
 N: 1689009.887 E: 1639842.991 EL: 1299.710
 Description of control point: 5/8" rebar w/ red MKEC Control Pt. ID cap

Benchmarks:

BM1
 N: 1688815.289 E: 1640818.173 EL: 1300.940
 Description of Benchmark: Chiseled square center of concrete drive into Botanica at the Trash Dumpster.

BM2
 N: 1689010.727 E: 1640178.533 EL: 1307.725
 Description of Benchmark: Chiseled square at the SE corner of electric vault just west of the SW corner black chain link fence.

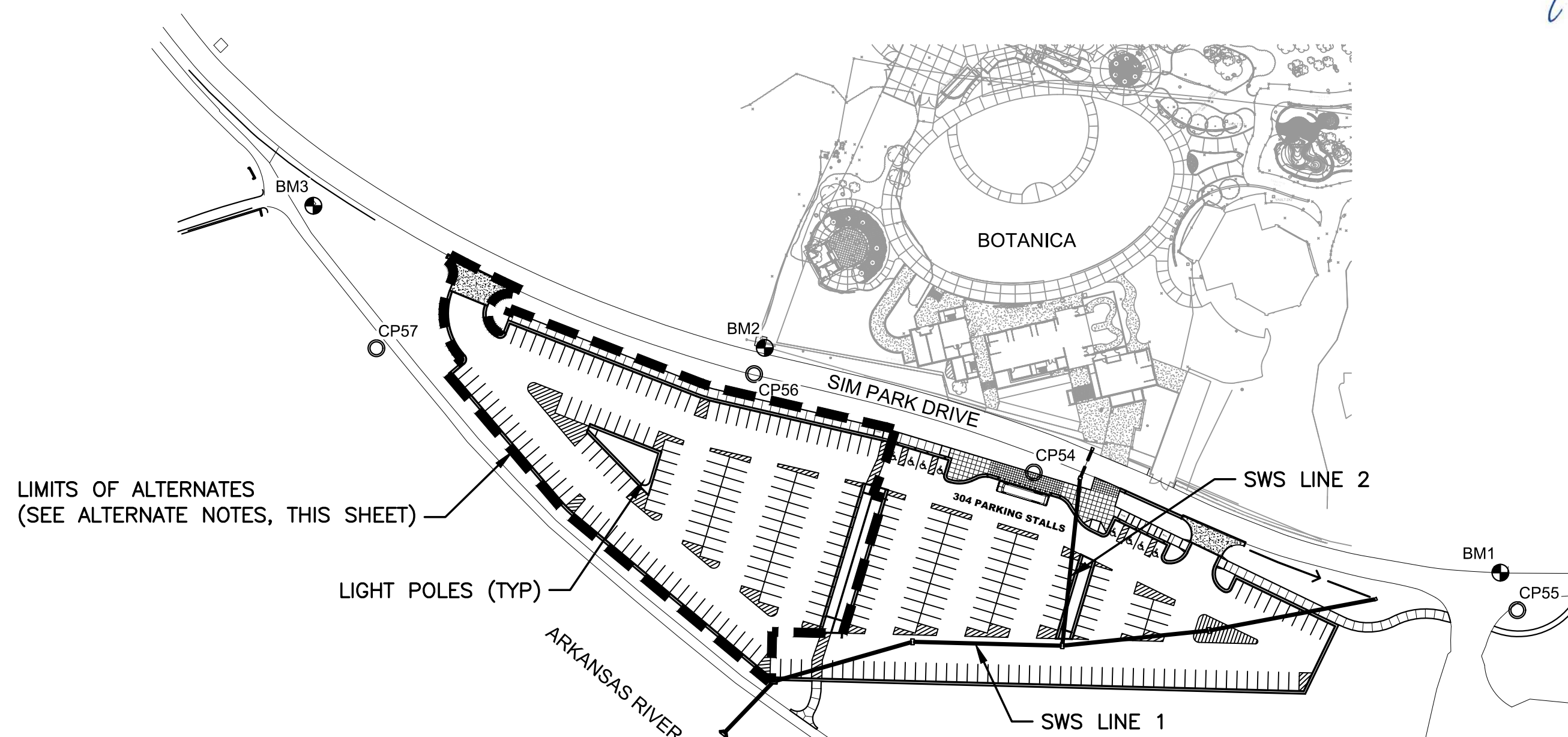
BM3
 N: 1689133.541 E: 1639788.352 EL: 1305.100
 Description of Benchmark: Chiseled square at the SE corner of old transformer pad SE of the East end of the Pedestrian bridge over the river

Note:

All Control Points shown have elevations established using standard surveying procedures and can be used as temporary benchmarks. When using a Control point as a temporary benchmark, it is recommended that cross-checks be made to other control points or benchmarks to confirm elevations prior to use.

UTILITIES:

The underground utilities shown hereon were marked in the field by the utility owners in response to Kansas One Call Tickets Number: 17004934 & 20104067. The surveyor makes no guarantee that the underground utilities shown comprise all such utilities in the area, either in service or abandoned. The surveyor further does not warrant that the underground utilities shown are in the exact location indicated although he does certify that they are located as accurately as possible from information available. The surveyor has not physically located the underground utilities.



BASE BID

GENERAL DESCRIPTION: INCLUDES ALL EARTHWORK, ALL STORMWATER SEWER, AND PARKING IMPROVEMENTS TO EAST HALF OF PARKING DEPICTED.

ALTERNATE 1

GENERAL DESCRIPTION: INCLUDES PARKING IMPROVEMENTS TO WEST HALF OF PARKING DEPICTED.

ALTERNATE 2

GENERAL DESCRIPTION: INCLUDES ONLY GEOGRID WITH 5" CLEAN WASHED #57 GRAVEL BASE (NO CURB AND GUTTER, ASPHALT, OR SIDEWALK).

ALTERNATE NOTES
 IF NO ALTERNATES ARE TAKEN:

- CONTRACTOR SHALL MODIFY GRADING AT EDGES OF ALTERNATE AREA TO ELIMINATE POTENTIAL PONDING AREAS AND NON-MOWABLE RIDGES/CUTS.
- CONTRACTOR SHALL INSTALL TEMPORARY 30' WIDE 5" DEPTH GRAVEL W/ GEOGRID CONNECTION TO SIM PARK DRIVE AT NORTHWEST CORNER. ADJUST ADJACENT GRADING TO DRAIN.
- CONTRACTOR SHALL SEED ALL DISTURBED SOILS WITHIN AND ADJACENT TO ALTERNATE AREA.

EARTHWORK SUMMARY

EXCAVATION	7,109 C.Y.
*COMPACTED FILL (95%)	7,237 C.Y.
EXCESS (COMPACTED FILL 95%)	129 C.Y.

* 40% SHRINK/SWELL FACTOR ADDED

EARTHWORK QUANTITIES ARE FOR INFORMATION ONLY. THE SITE EARTHWORK SHALL BE BALANCED AFTER CONSTRUCTION. ANY ADDITIONAL CUT/FILL VOLUMES SHALL BE SUBSIDIARY TO EARTHWORK BID ITEMS. ALL ADDITIONAL EARTHWORK CUT/FILL AREA IS SHOWN IN PLANS OR ON BOTANICA PROPERTY AND SHALL BE DETERMINED BY OWNER.

EXCESS MATERIAL TO BE PLACED & COMPACTED ON SITE. LOCATION DETERMINED BY ENGINEER/OWNER'S DIRECTION



PAVING & DRAINAGE FOR
BOTANICA GARDENS PARKING LOT
 WICHITA, KANSAS

©2021
 MKEC Engineering
 All Rights Reserved
 www.mkec.com
 These drawings and their contents, including, but not limited to, all concepts, designs, & ideas are the exclusive property of MKEC Engineering (MKEC), and may not be used or reproduced in any way without the express consent of MKEC.

TITLE SHEET

PROJECT NO.	482-11034	
DATE	JULY 2021	
SCALE	1"=100'	
DESIGNED	DRAWN	CHECKED
JAG	CRM	GJA
NO.	REVISION	DATE
SHEET NO. 01 OF 31		