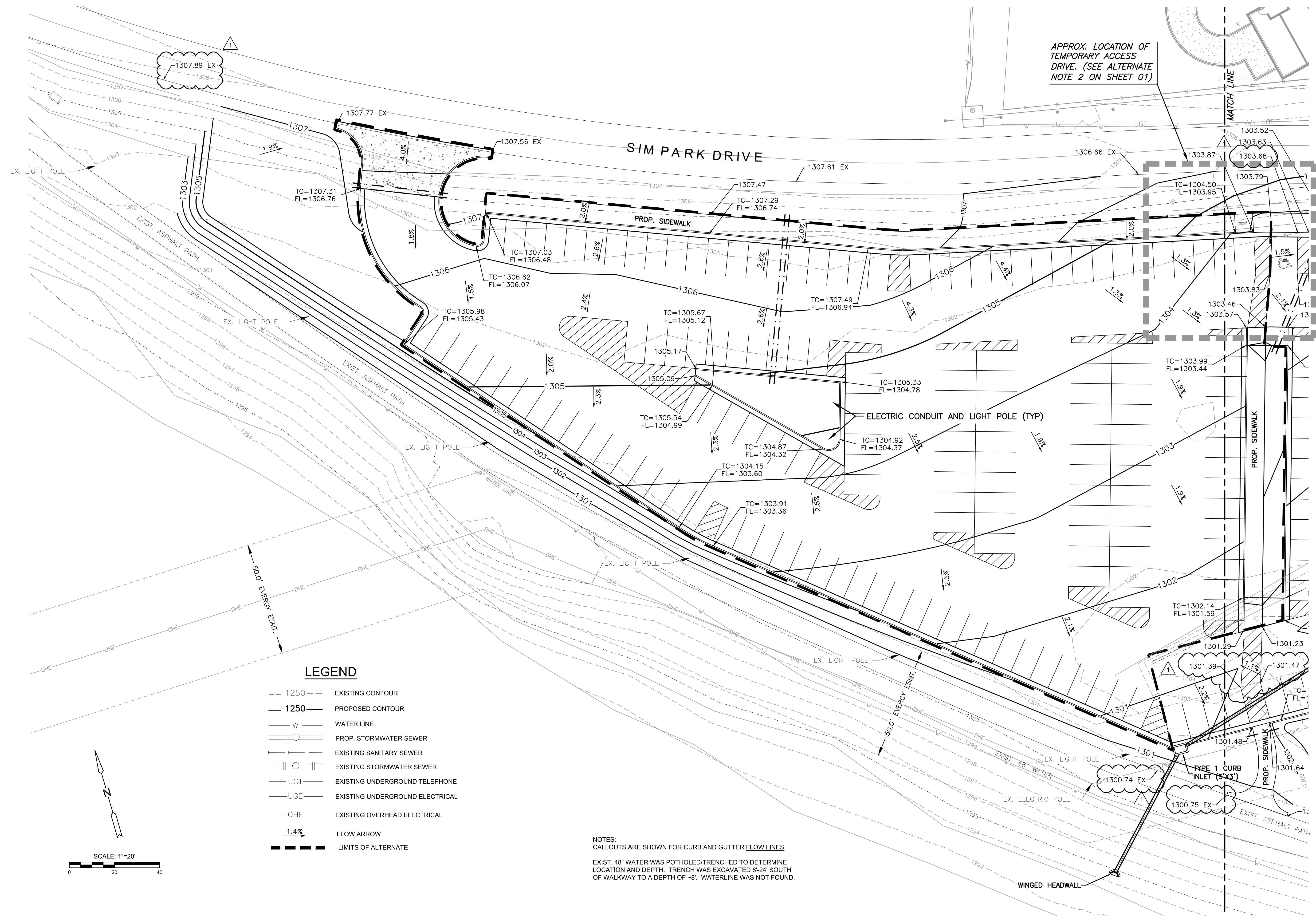


J:\PROJECTS\2019\10483_COW_BOTANICA PARKING EXPANSION_190483 CAD\SHS\05 CIVIL\PAV\190483-05-201.DWG
 PLOTTED: Friday, July 23, 2021 @ 10:26AM

PAVING & DRAINAGE FOR
BOTANICA GARDENS PARKING LOT
 WICHITA, KANSAS

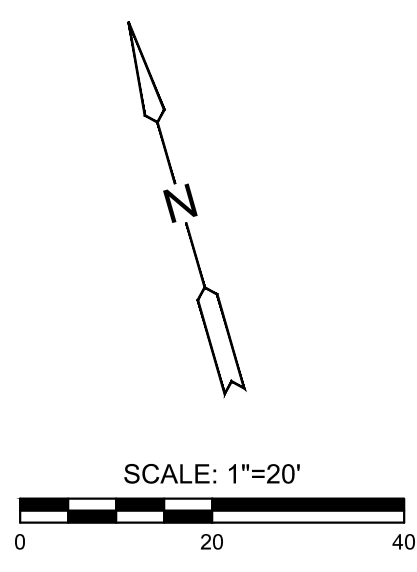


APPROX. LOCATION OF
 TEMPORARY ACCESS
 DRIVE. (SEE ALTERNATE
 NOTE 2 ON SHEET 01)

LEGEND

- 1250 --- EXISTING CONTOUR
- 1250 — PROPOSED CONTOUR
- W WATER LINE
- PROP. STORMWATER SEWER
- EXISTING SANITARY SEWER
- EXISTING STORMWATER SEWER
- UGT— EXISTING UNDERGROUND TELEPHONE
- UGE— EXISTING UNDERGROUND ELECTRICAL
- OHE— EXISTING OVERHEAD ELECTRICAL
- 1.4% FLOW ARROW
- LIMITS OF ALTERNATE

NOTES:
 CALLOUTS ARE SHOWN FOR CURB AND GUTTER FLOW LINES
 EXIST. 48" WATER WAS POTHOLED/TRENCHED TO DETERMINE
 LOCATION AND DEPTH. TRENCH WAS EXCAVATED 8'-24" SOUTH
 OF WALKWAY TO A DEPTH OF -8". WATERLINE WAS NOT FOUND.



©2021
 MKEC Engineering
 All Rights Reserved
 www.mkec.com
 These drawings and their contents,
 including, but not limited to, all concepts,
 designs, & ideas are the exclusive
 property of MKEC Engineering (MKEC),
 and may not be used or reproduced in any
 way without the express consent of MKEC.

**GRADING
PLAN 1**

PROJECT NO.	482-11034	
DATE	JULY 2021	
SCALE	1"=20'	
DESIGNED	DRAWN	CHECKED
JAG	CRM	GJA

NO.	REVISION	DATE
1	REVISED CALLOUTS	07.23.21