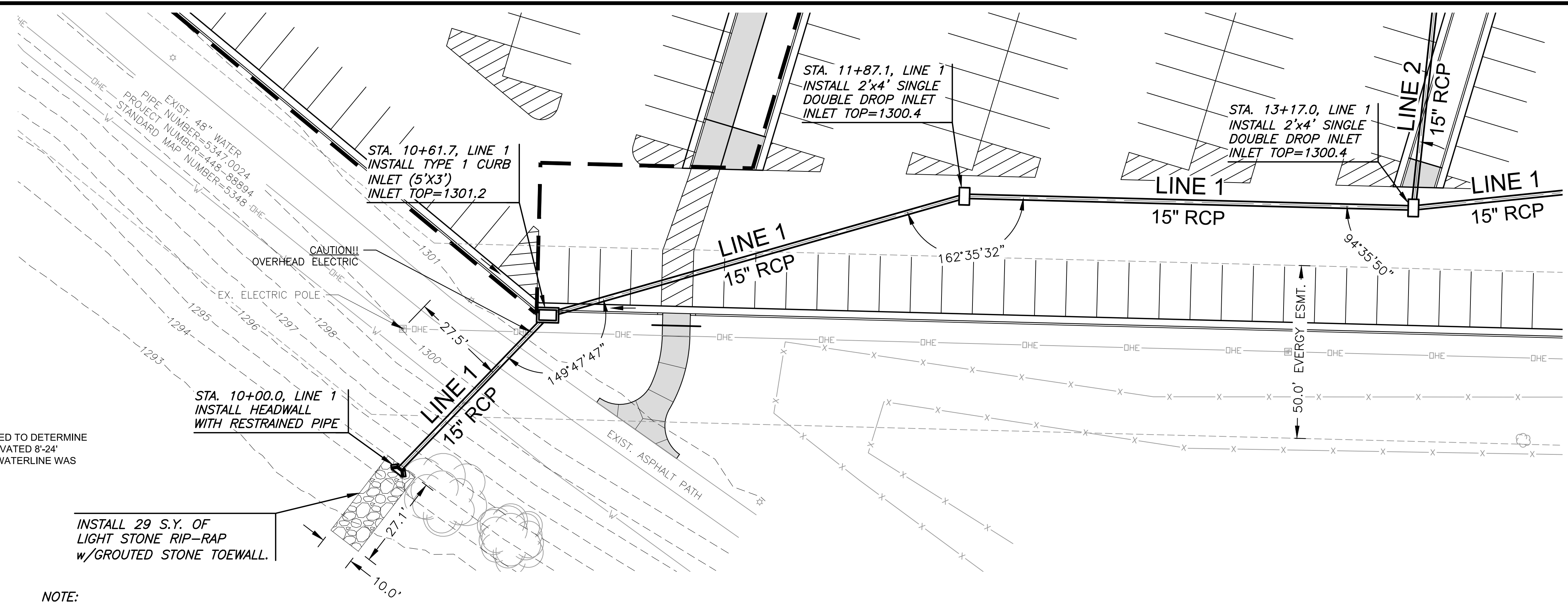


PLOTTED: Thursday, July 15, 2021 @ 11:25AM

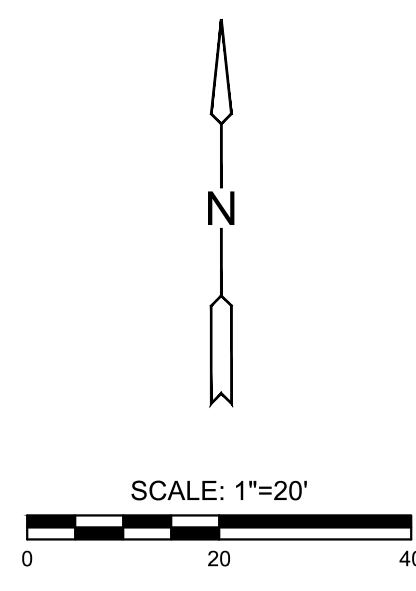
J:\PROJECTS\2019\19010483_COW_BOTANICA PARKING EXPANSION\190483 CAD\SHOTS\05 CIVIL\SWIS\190483-05-2020.DWG



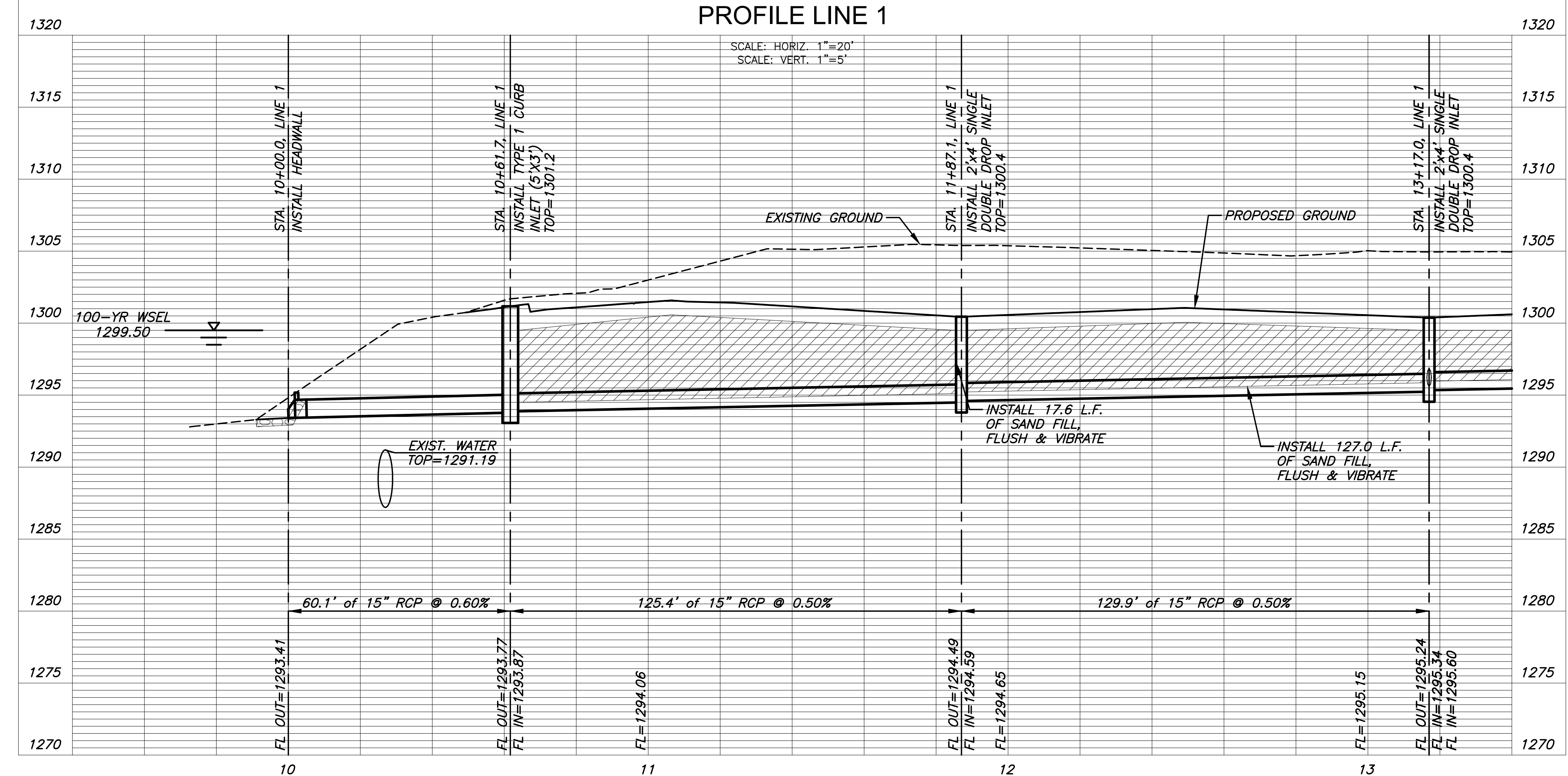
NOTE:
EXIST. 48" WATER WAS POTHOLED/TRENCHED TO DETERMINE LOCATION AND DEPTH. TRENCH WAS EXCAVATED 8'-24" SOUTH OF WALKWAY TO A DEPTH OF -8'. WATERLINE WAS NOT FOUND.

INSTALL 29 S.Y. OF LIGHT STONE RIP-RAP w/GROUTED STONE TOEWALL.

NOTE:
CONTRACTOR TO VERIFY THE DEPTH AND LOCATION OF EXISTING UTILITIES PRIOR TO CONSTRUCTION.



PLAN LINE 1
PROFILE LINE 1



PAVING & DRAINAGE FOR
BOTANICA GARDENS PARKING LOT
WICHITA, KANSAS

©2021 MKEC Engineering All Rights Reserved
www.mkec.com
These drawings and their contents, including, but not limited to, all concepts, designs, & ideas are the exclusive property of MKEC Engineering (MKEC), and may not be used or reproduced in any way without the express consent of MKEC.

LINE 1		
PROJECT NO.	482-11034	
DATE	JULY 2021	
SCALE	1"=20'	
DESIGNED	DRAWN	CHECKED
JAG	CRM	GJA
NO.	REVISION	DATE
SHEET NO.		
16 OF 31		