

GENERAL NOTES:

1. The Contractor shall comply with all applicable safety regulations. All construction shall be completed following current City Standard Specifications and Special Provisions.
2. Contractor will be required to provide notice to utility companies a minimum of seventy-two (72) hours prior to any excavation, as follows:

Kansas One-Call 687-2470

The Contractor must notify the following in case of an emergency:

AT&T	1-800-246-8464
Black Hills Energy	1-800-694-8989
City of Wichita Water & Sewer	1-316-219-8921
City of Wichita Stormwater	1-316-268-4090
City of Wichita Traffic	1-316-268-4034
Cox Communications	1-888-249-3530
Kansas Gas Service	1-888-482-4950
Energy	1-800-544-4857

3. Utility service lines, poles, etc. are to be adjusted as necessary by others prior to construction unless the plans specifically call for their adjustment by the Contractor or unless the plans specifically identify a utility to be adjusted by its owner during construction. Existing utilities and their location, as shown on the plans, represent the best information obtainable for design. The Contractor will be required to work around existing utilities within the right-of-way which do not conflict with proposed construction.

4. Rubble from the removal of miscellaneous structures and excess excavation which is to be wasted shall be disposed of on sites to be provided by the Contractor. These sites shall be approved by the Engineer as to suitability, appearance and site location. Locations, in the opinion of the Engineer, that will leave an unsightly appearance will not be approved. All disposal sites must be approved by the Kansas Department of Health and Environment. Material either stockpiled or disposed of in a flood plain will require a Kansas State Board of Agriculture permit. Any material dumped in waters of the United States or wetlands is subject to U.S. Corps. of Engineers permitting regulations. Any material buried or stockpiled beyond approved construction limits will require additional archaeological investigations unless buried in a previously approved borrow location.

5. Trees and shrubs in public right-of-way which are in direct conflict with proposed new construction shall be removed by the Contractor with the City Engineer's approval. Trees and shrubs which are not in direct conflict with proposed new construction shall be saved and protected from damage.

6. The Contractor shall give all property owners and/or tenants of developed property abutting the construction of this project a minimum of ten (10) days notice prior to start of construction.

7. The Contractor shall be responsible for preserving property irons. The Contractor will be required to re-establish any property irons which are damaged or destroyed by his construction operations. Such irons shall be re-established by a licensed land surveyor in accordance with state laws.

8. All elevations shown are NAVD88.

9. All stubs and capped pipes shall be located with green plastic tape in the same manner as risers.

10. Connecting to Existing Manholes: Prior to laying sewer lines using existing stubs in existing manholes, the Contractor shall expose and verify the elevation, grade and alignment of existing stubs and notify the Engineer of any deviation from the plans. Where the stub is unusable due to elevation grade or alignment, the Contractor shall remove the stub and plug the hole, and reshape the existing manhole invert to provide smooth flow. Where connection to an existing manhole that does not have an existing stub, the Contractor shall core cut into existing manhole wall to make connection using approved water stop gasket, and reshape the existing manhole invert to provide smooth flow. The cost of connect to existing manholes is incidental to the project.

11. Contractor shall limit the extent of trench open overnight and weekends to less than 50 feet.

12. Contractor shall provide positive drainage away from all manhole covers.

13. The Contractor shall prevent any construction debris from entering the existing sanitary sewer during construction.

14. The Contractor shall protect from damage and support existing utilities through construction as approved by the utility owner and the Engineer at the contractor's expense.

15. Contractor shall grade around exposed manholes at a 1:1 slope. Manholes set lower than existing grade shall have a 9" berm constructed around manhole to prevent infiltration into sanitary sewer system. Cost of dirt, labor, equipment, etc. to be incidental to cost of manhole. Easements shall be graded with the street improvement project as part of the mass grading plan.

16. All disturbed areas are to be seeded as follows:

Seed -- Rye grass; 5 lbs./1000 Sq. Ft.

All costs associated with seeding including mobilization, preparation of ground, seeding, fertilizing, mulching, etc. shall be included in the L.S. bid item "Seeding".

17. All existing and proposed erosion control measures including silt fencing, erosion control mat, straw bales, inlet barriers, and const. entrance shall be maintained throughout construction by the contractor and until project is accepted by the City of Wichita. The on-site engineer shall complete weekly reports on the status of erosion control measures. The contractor shall be required to comply with maintenance and/or replacement of erosion control measures as determined by the on-site engineer until project is accepted by City of Wichita. Maintenance and/or replacement of erosion control measures to be paid by L.S. bid item "Maintain Existing BMPs".

18. All excess excavation shall remain on-site and shall be stockpiled or spread at a location determined by the engineer.

19. The developer for this project is Newspring Church, Inc., Billy W. Poore, Treasurer

Benchmarks

BM #1: Chiseled square, top of curb, 426.4' W. & 960.0' N. of the SE Cor., Lot 8, Block A, Newspring Commercial Addition, (N24°43'48"W, 1050.41' from SE Cor., Lot 8, Block A). Elev. = 1389.22 (NAVD88)

SANITARY SEWER IMPROVEMENTS to serve NEWSPRING COMMERCIAL ADD.

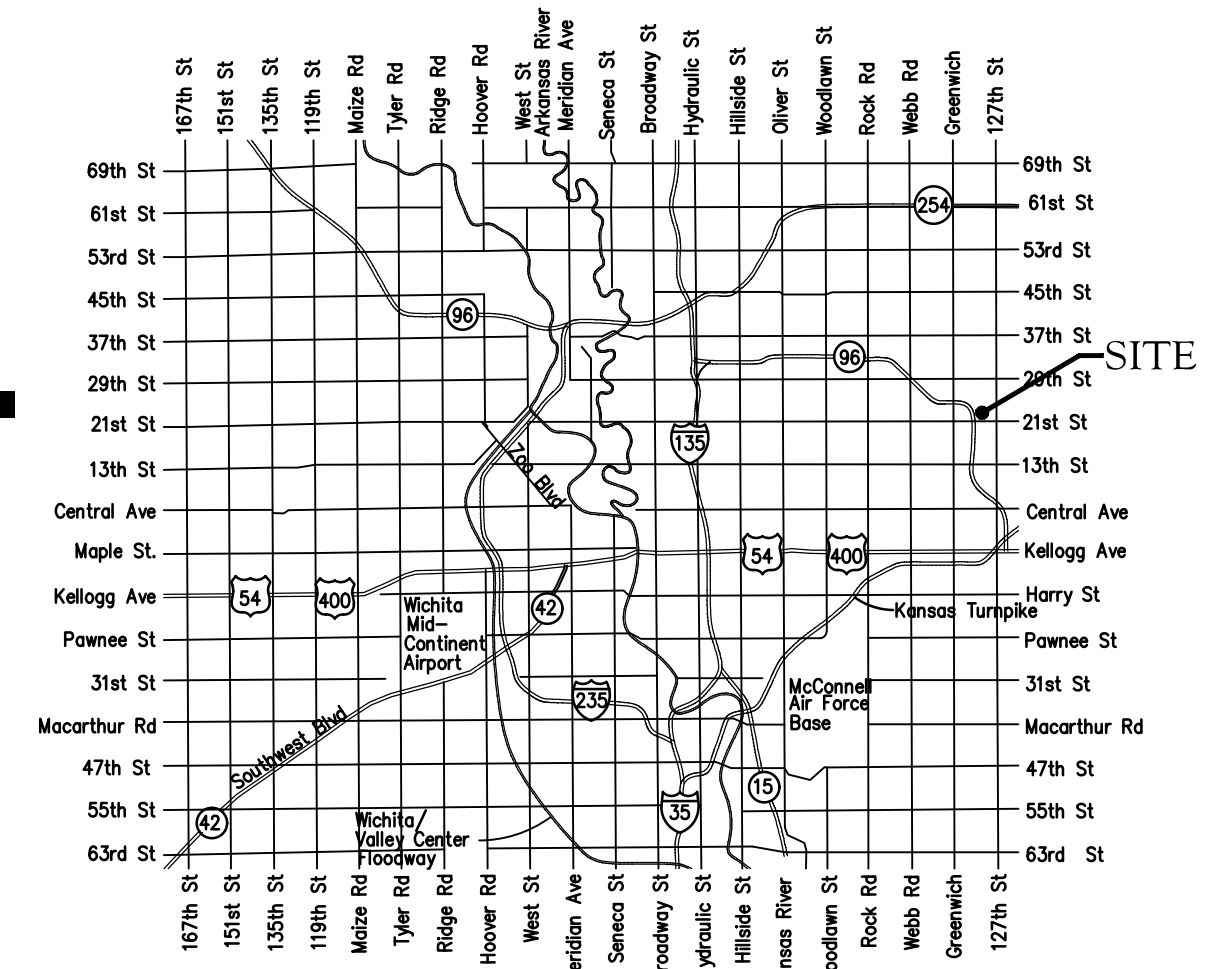
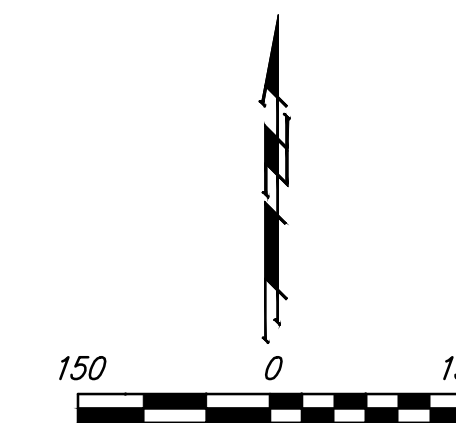
CITY OF WICHITA, KANSAS

Gary Janzen, P.E. City Engineer
Project Number 468-2020-027531
Org Code 47263420
Munis Number E0111

Contractor - Apex
Foreman - Claudio Tovar
Engineer - Kevin Yale
Inspector - Roger Skilling

Riser added sta. 0+15
8" clean-out riser reduces to 6" at Sta 2+68.

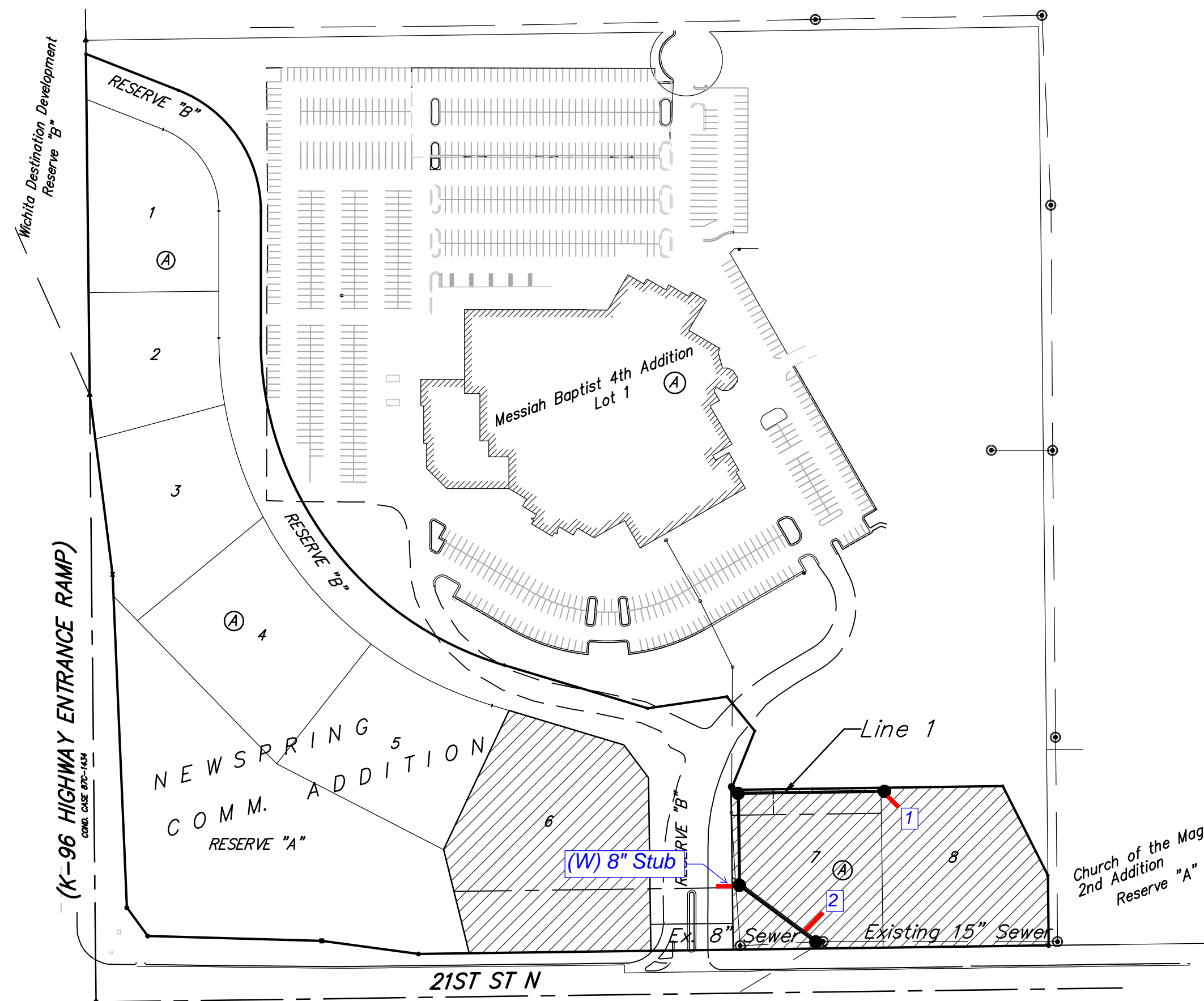
As-built
Release Date (for connection purposes only): 7/28/2021
Completion Date:
: apr 8/5/2021



Vicinity Map

Sheet Index

Title Sheet	1
Line 1	2
Erosion Control/Grading Plan	3
Precast SS Manhole Detail	4
Manhole Frame & Cover Detail	5
Cleanout Riser Assembly Detail	6
Erosion Control BMP Details	7-11
Coordinate Sheet	12
Copy of Plat	13

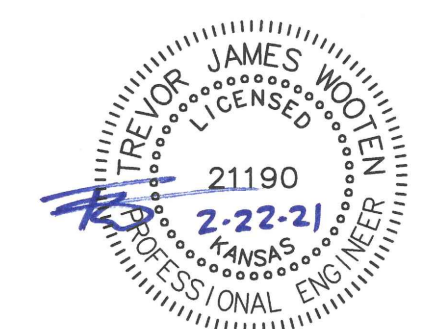


Benefit District

February 2021



Baughman Company, P.A. 315 Ellis St. Wichita, KS 67211 P 316-262-7271 F 316-262-0143
ENGINEERING | SURVEYING | PLANNING | LANDSCAPE ARCHITECTURE



BENCHMARK:
 BM #1: Chiseled square, top of curb,
 426.4' W. & 960.0' N. of the SE Cor.,
 Lot 8, Block A, Newspring Commercial
 Addition, (N24°43'48"W, 1050.41' from
 SE Cor., Lot 8, Block A).
 Elev. = 1389.22 (NAVD88)

SEWER SERVICE TABLE

NUMBER	TYPE	LOCATION			FOR INFORMATION ONLY	
		LOT NO.	BLOCK NO.	LINE NO.	STATION \ DIRECTION	APPROXIMATE LENGTH 4" PIPE VERTICAL HORIZONTAL
1	4" Stub	8	A	1	4+69.9/Rt.	- 8-7' 9"

NOTE: Vertical Riser Pipe shall be extended to 2' minimum above ground water elevation and 4' maximum below proposed ground elevation.

Sta 0+00.0 to Sta 1+41.2, Line 1
 Install 141.2 L.F. Sand Backfill per
 City specs.

Sta. 0+00.0: All work
 associated with removing
 pipe, sealing, grouting,
 coring, re-connecting, and
 liner repair to be included in
 bid item "Connect to
 Existing Manhole".

6" pipe from mh to 6" 45
 deg bend to 6"x8" reducer
 to 8" cleanout. MH had
 6"A lok for riser.

Sta. 2+68.2, Line 1
 Construct MH, Standard (4').
 13.0 L.F. Pipe, SS 6" (NW)
 1 - 6" 45° Bend (N)
 1-Riser Assembly 8", Cleanout
 Connect existing 6" sewer
 (N) and abandon pipe south.
 Top Elev. = 1384.80
 N=1,699,913.61 E=1,689,544.58

Sta. 1+41.2, Line 1
 Construct MH,
 Standard (4').
 1 - Pipe Stub, 8" (W)
 (20' long) @ +0.400%
 Top Elev. = 1382.80
 N=1,699,786.67 E=1,689,546.31

Sta. 4+69.9, End Line 1
 Construct MH,
 Standard (4').
 1 - Pipe Stub, 4" (SE)
 Top Elev. = 1379.00
 N=1,699,916.36 E=1,689,746.26

Riser #1, Lot 8, Blk A
 Dist. from Main to Riser: 9' Rt.
 Distance from USMH: @ mh
 Distance from DSMH: @ mh

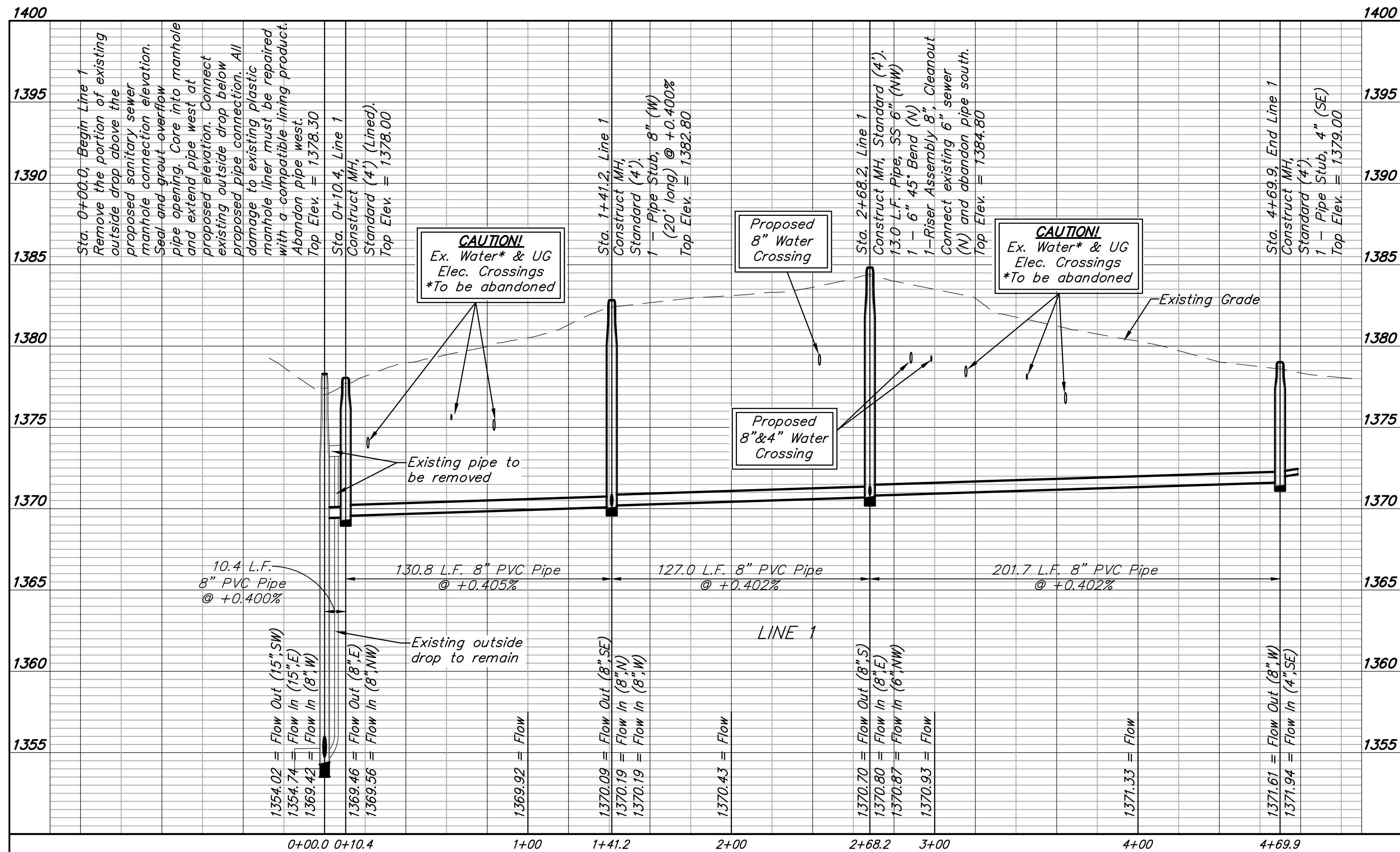
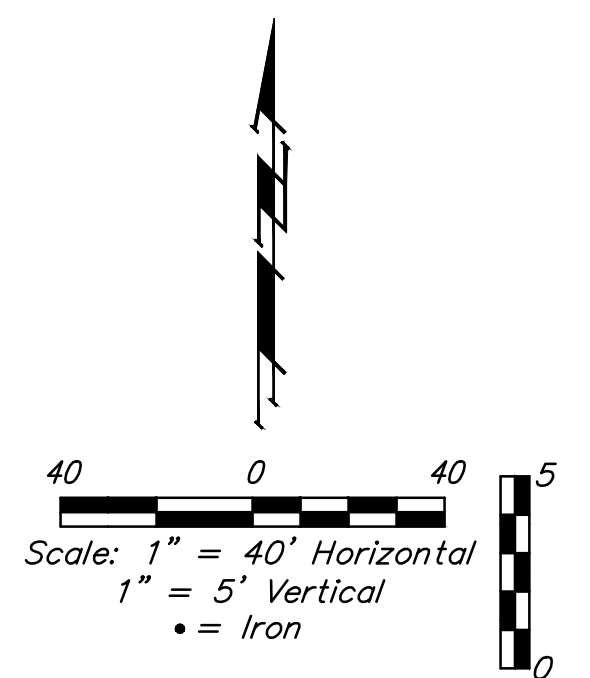
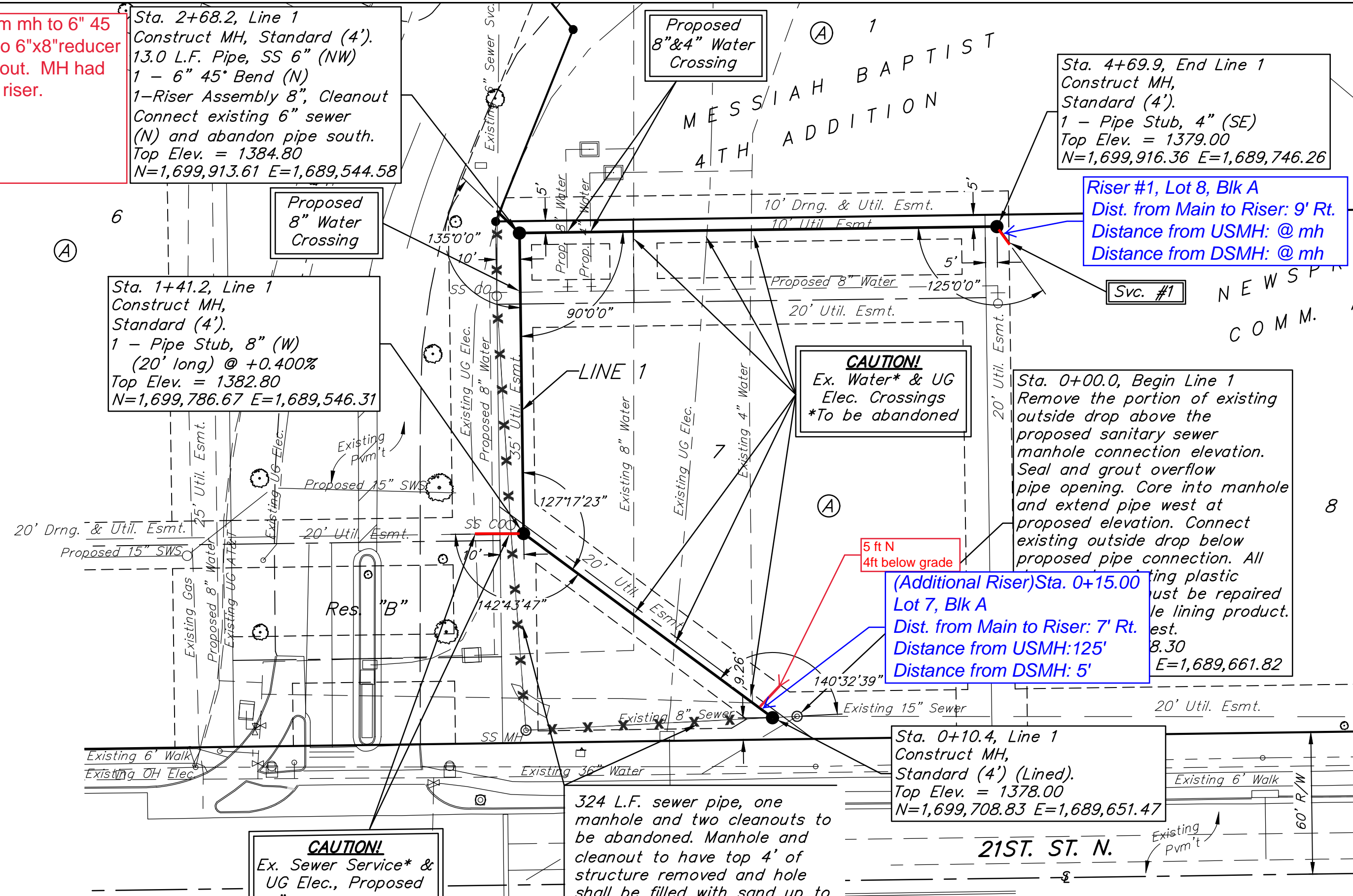
CAUTION!
 Ex. Water* & UG
 Elec. Crossings
 *To be abandoned

5 ft N
 4ft below grade
 (Additional Riser) Sta. 0+15.00
 Lot 7, Blk A
 Dist. from Main to Riser: 7' Rt.
 Distance from USMH: 125'
 Distance from DSMH: 5'

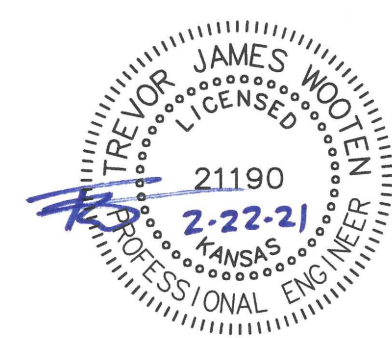
Sta. 0+10.4, Line 1
 Construct MH,
 Standard (4') (Lined).
 Top Elev. = 1378.00
 N=1,699,708.83 E=1,689,651.47

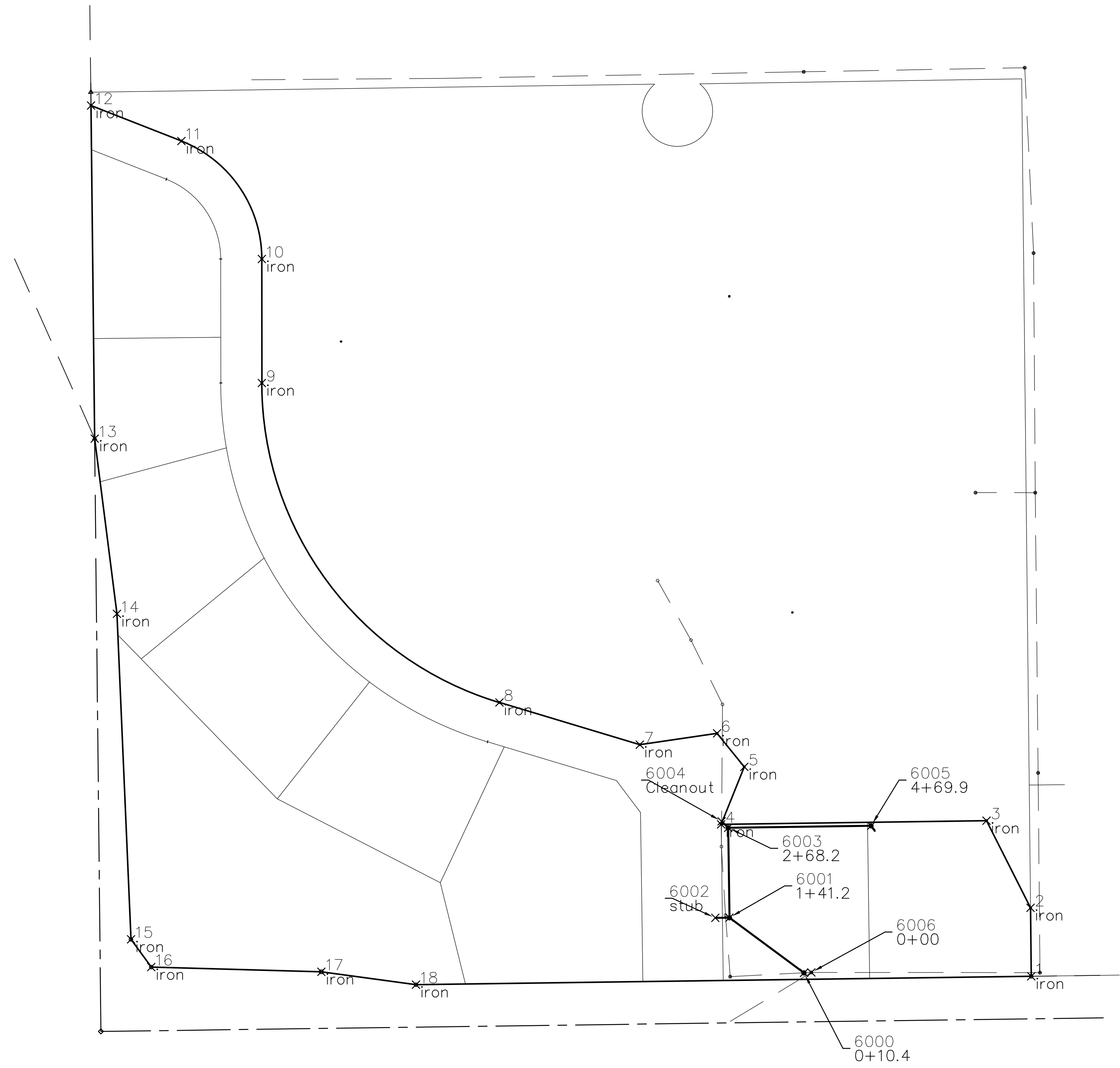
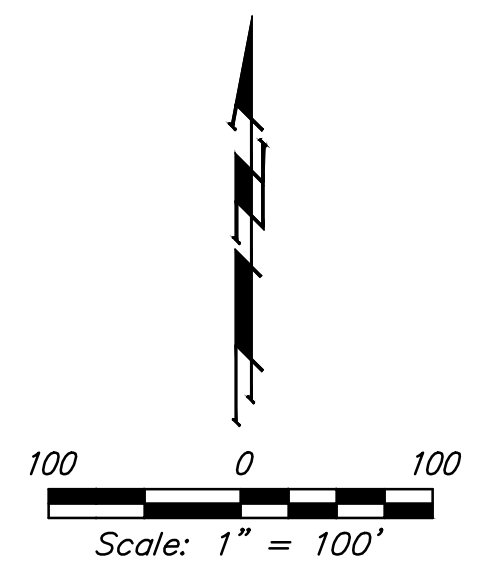
324 L.F. sewer pipe, one
 manhole and two cleanouts to
 be abandoned. Manhole and
 cleanout to have top 4' of
 structure removed and hole
 shall be filled with sand up to
 existing ground.

CAUTION!
 Ex. Sewer Service* &
 UG Elec., Proposed
 8" Water Crossings
 *To be abandoned



Sta. 0+00.0 & 2+68.2
 Contractor shall verify
 elevation and alignment of
 existing sewer pipe prior to
 construction and notify
 Engineer of any discrepancy.





IRONS

Point Table			
Point #	Northing	Easting	Raw Description
1	1699703.94	168972.37	iron
2	1699800.55	168971.34	iron
3	1699923.58	1689909.19	iron
4	1699918.48	1689534.52	iron
5	1699999.63	1689567.20	iron
6	1700046.90	1689528.80	iron
7	1700030.91	1689419.75	iron
8	1700090.50	1689221.60	iron
9	1700541.50	1688886.23	iron
10	1700716.53	1688886.22	iron
11	1700883.12	1688772.66	iron
12	1700933.23	1688645.08	iron
13	1700462.98	1688650.24	iron
14	1700215.64	1688681.68	iron
15	1699756.10	1688701.56	iron
16	1699716.91	1688730.09	iron
17	1699710.28	1688970.21	iron
18	1699692.11	1689103.74	iron

SANITARY SEWER

Point Table			
Point #	Northing	Easting	Raw Description
6000	1699708.83	1689651.47	0+10.4
6001	1699786.67	1689546.31	1+41.2
6002	1699786.40	1689526.31	stub
6003	1699913.61	1689544.58	2+68.2
6004	1699922.71	1689535.24	Cleanout
6005	1699916.36	1689746.26	4+69.9
6006	1699709.36	1689661.82	0+00

