

BENCHMARKS:
 CUT OFF "T"-POST, DOWN 0.25'
 13.5' WEST OF POWER POLE
 30' SOUTH OF FIRE HYDRANT
 +/- 200' SOUTH OF CENTERLINE
 DRIVE TO HOUSE # 2816 S MAIZE RD.
 ELEV. = 1328.386 (NAVD 88)

SQUARE CUT WITH + IN SW WINGWALL
 OF THE SOUTHERNMOST OF THREE
 CONCRETE DITCH CHECKS
 +/- 1125' WEST OF CENTERLINE S.
 MAIZE RD, BEHIND HOUSE #2951 S
 MAIZE RD.
 ELEV. = 1332.383 (NAVD88)

- NOTES:**
- Contractor shall make sure all erosion control is in place before project is accepted. This plan represents the minimum standard. Any additional erosion control measures shall be installed by the Contractor as needed.
 - Removal of Gravel Construction Entrance for pavement construction shall be included in bid item "Site Clearing"
 - This Plan is Not To Be Used As A Comprehensive Grading Plan. All Spot Elevations Are Proposed & Subject To Change.
 - All areas disturbed during construction shall be seeded, mulched, and fertilized as per Cover Sheet General Notes.

Approximate Easement Grading Quantities:
 (For Information Only)
 Excavation: 285 C.Y.
 Fill: 343 C.Y.

The Contractor shall grade the easements as shown to the elevations given on the easement grading plan.

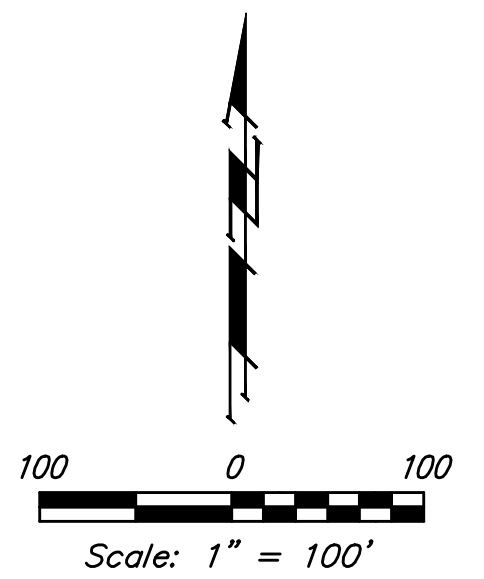
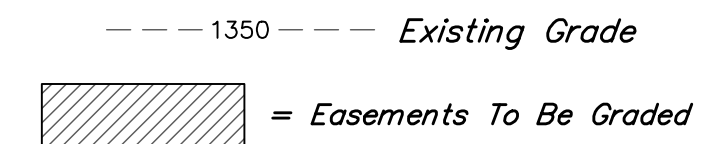
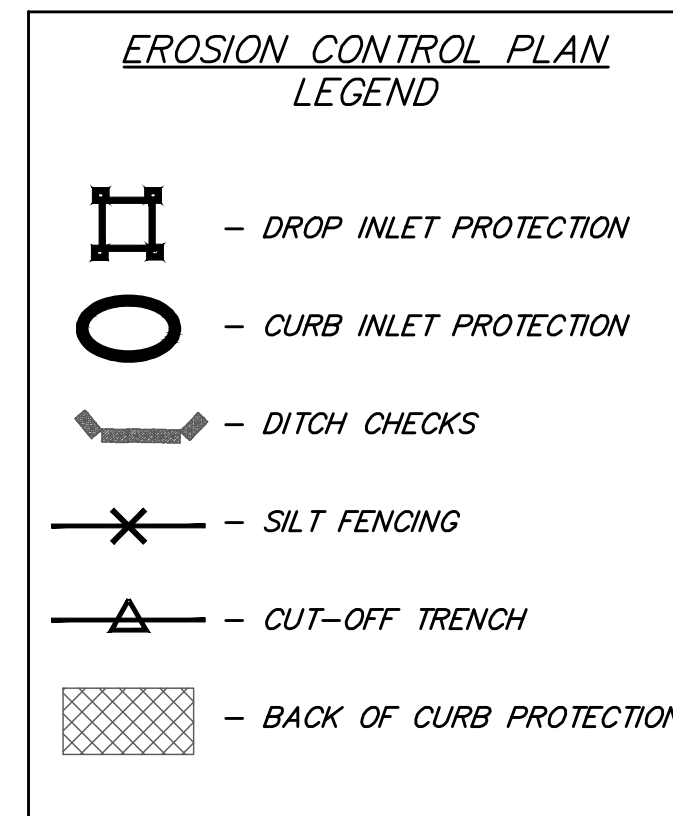
The Contractor shall 'straight' grade the easements between the elevations given. Where a callout designates 'Match', the Contractor will grade to the existing ground elevation.

Excess excavation from easement grading and from sanitary sewer construction shall be placed on the lots as indicated to the elevations shown.

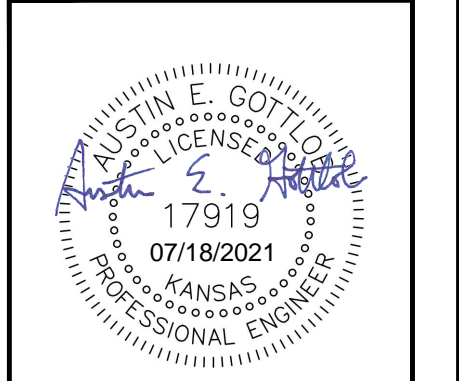
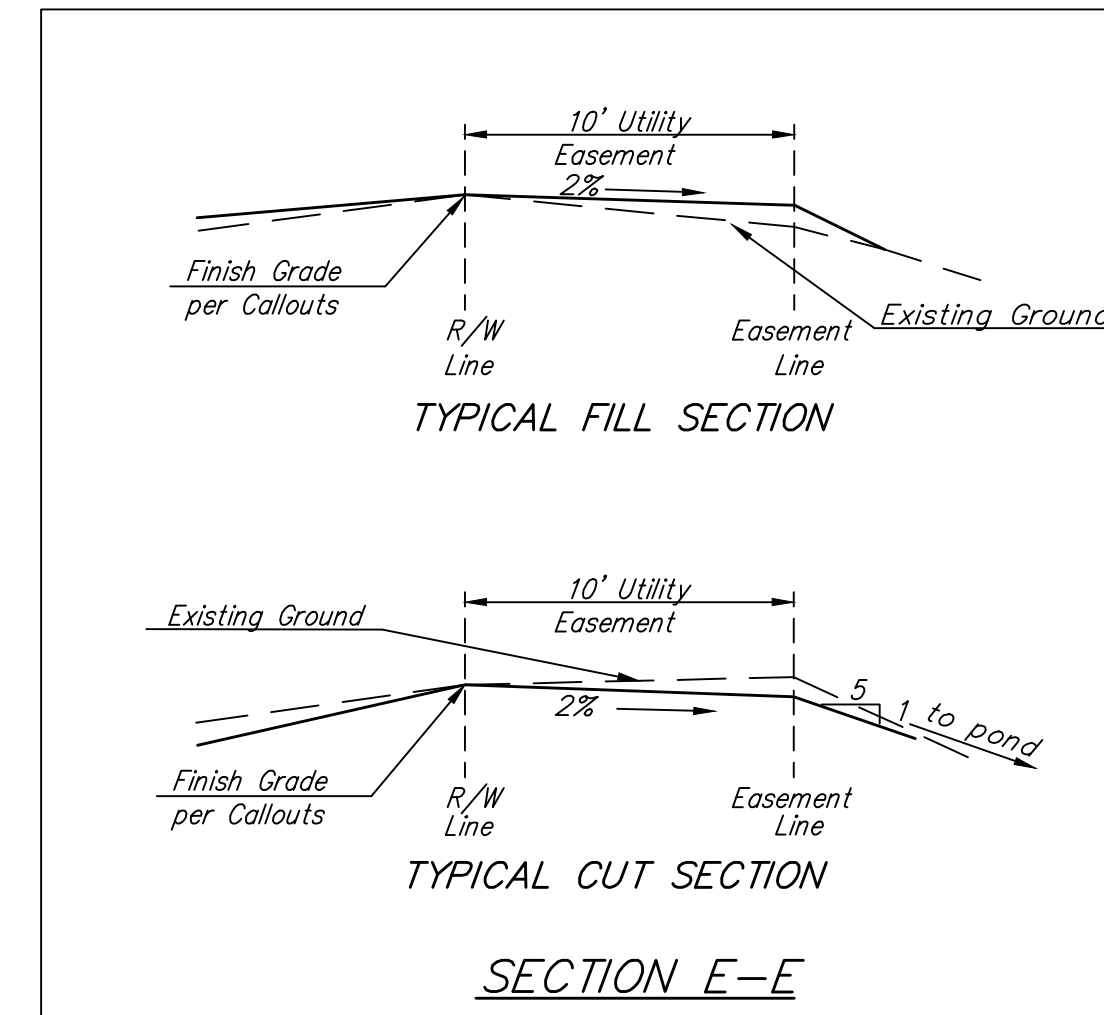
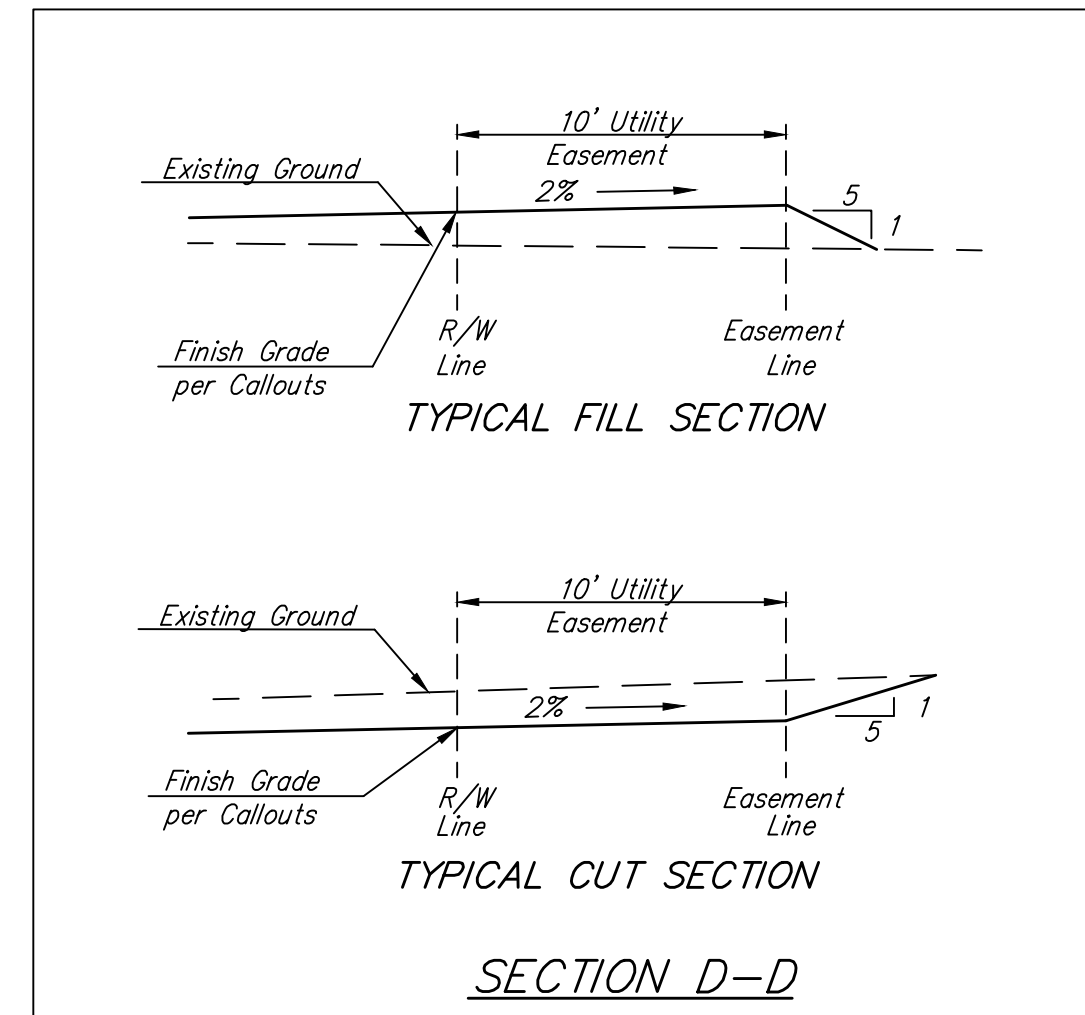
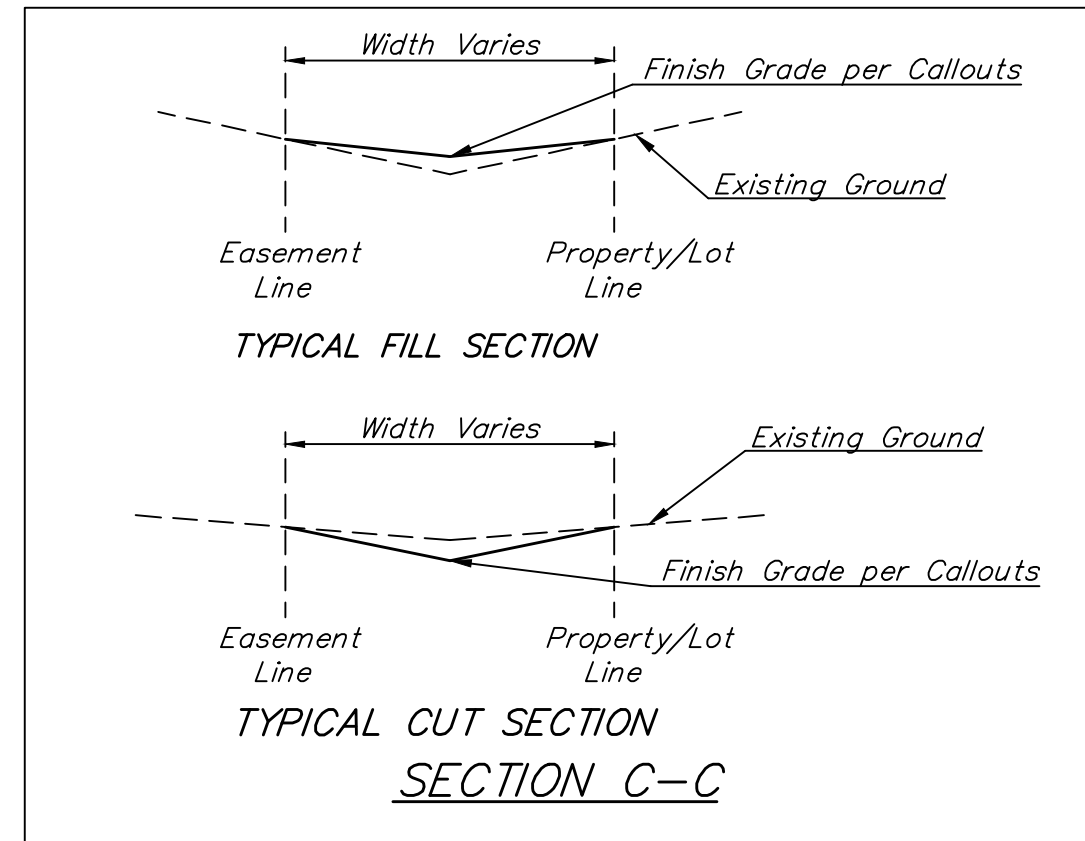
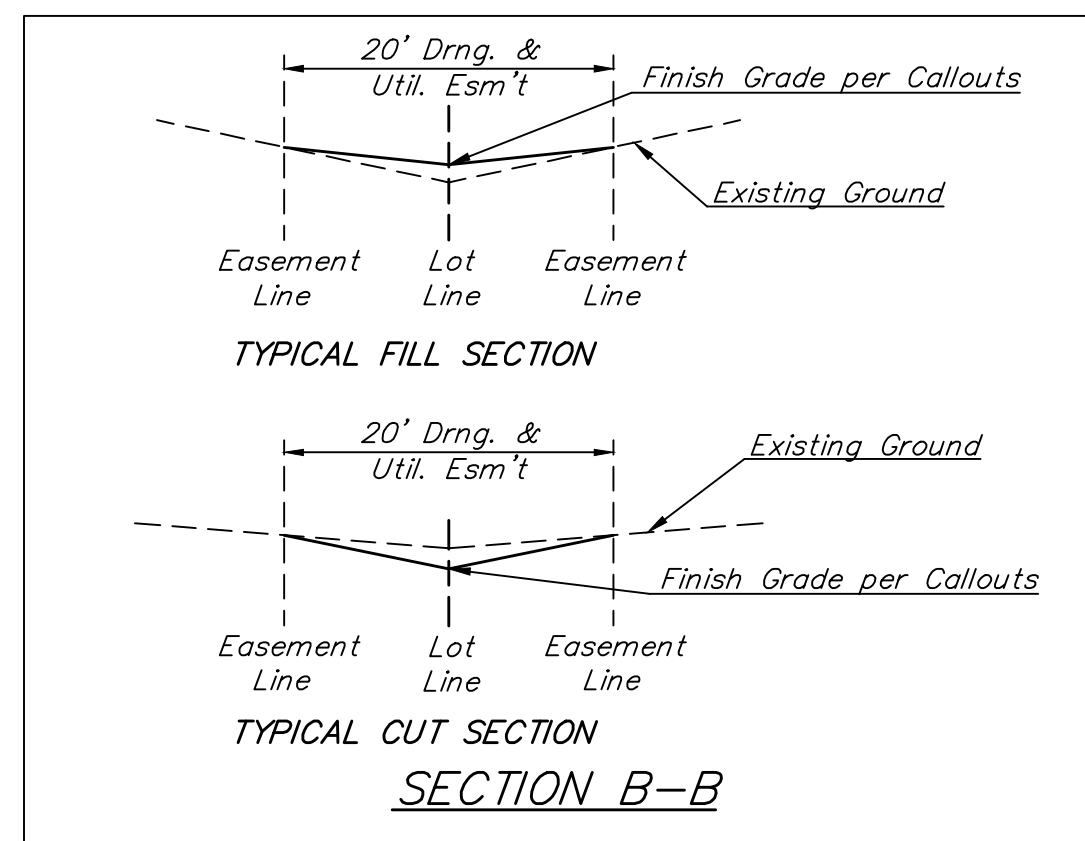
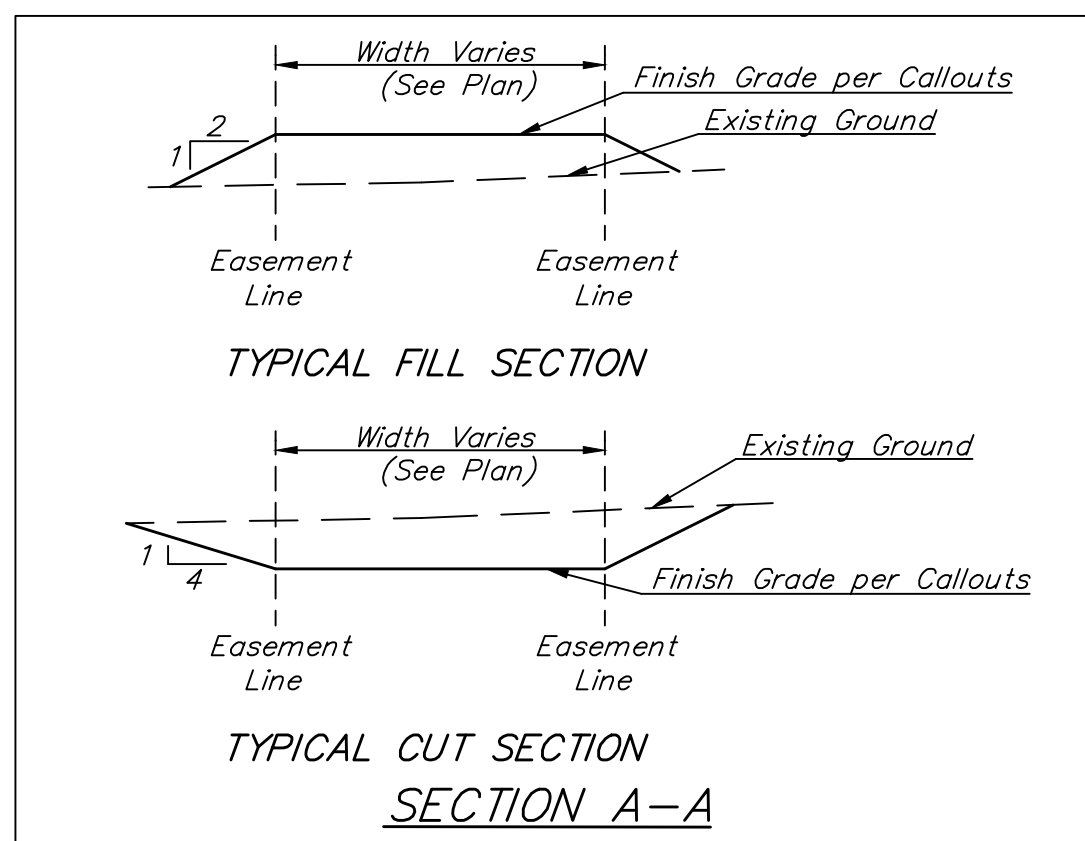
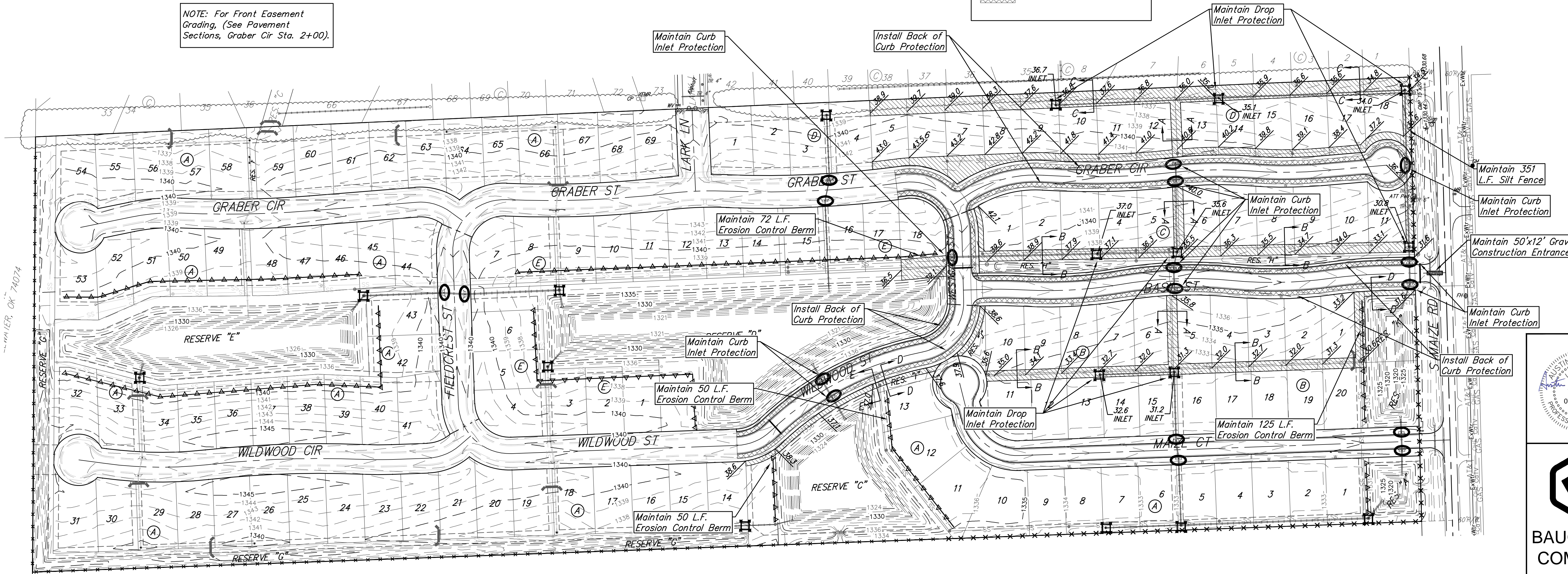
All cost to be included in the Lump Sum bid item "Easement Grading"

EROSION CONTROL MEASURE	INSTALL	MAINTAIN
BACK OF CURB PROTECTION (LF)	5,194	0
CONSTRUCTION ENTRANCE (EA)	0	1
CURB INLET BARRIER (EA)	0	10
DROP INLET PROTECTION (EA)	0	8
EROSION CONTROL BERM (LF)	0	297
SILT FENCE (LF)	0	351
EROSION CONTROL MAT (SY)	0	0
DITCH CHECKS (EA)	0	1
MAINTAIN EROSION CONTROL BMP's (LS)	0	1

* ALL EXISTING BMPs INCLUDING CONSTRUCTION ENTRANCE, SEDIMENT BARRIERS, SILT FENCE, CUT-OFF TRENCH, AND EROSION CONTROL MAT SHALL BE MAINTAINED AND REPAIRED IF NECESSARY.



NOTE: For Front Easement Grading, (See Pavement Sections, Graber Cir Sta. 2+00).



BAUGHMAN COMPANY

315 Ellis St.
 Wichita, KS 67211
 316-262-7271
 BaughmanCo.com

SCHULTE-JOHNSON 2ND ADD. - PHASE 1A

EROSION CONTROL

STREET IMPROVEMENTS

PROJECT NUMBER:
 472-2019-085545

DESIGN: AEG DRAWN: HJW

DATE: July 19, 2021

SHEET 13 OF 26

File: C:\Projects\Schulte-Johnson 2nd Addition\Engineering\Phase 1A\STR\STR Plans.dwg