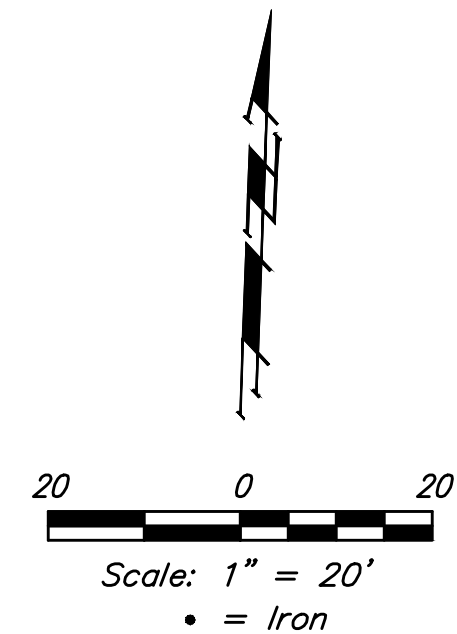
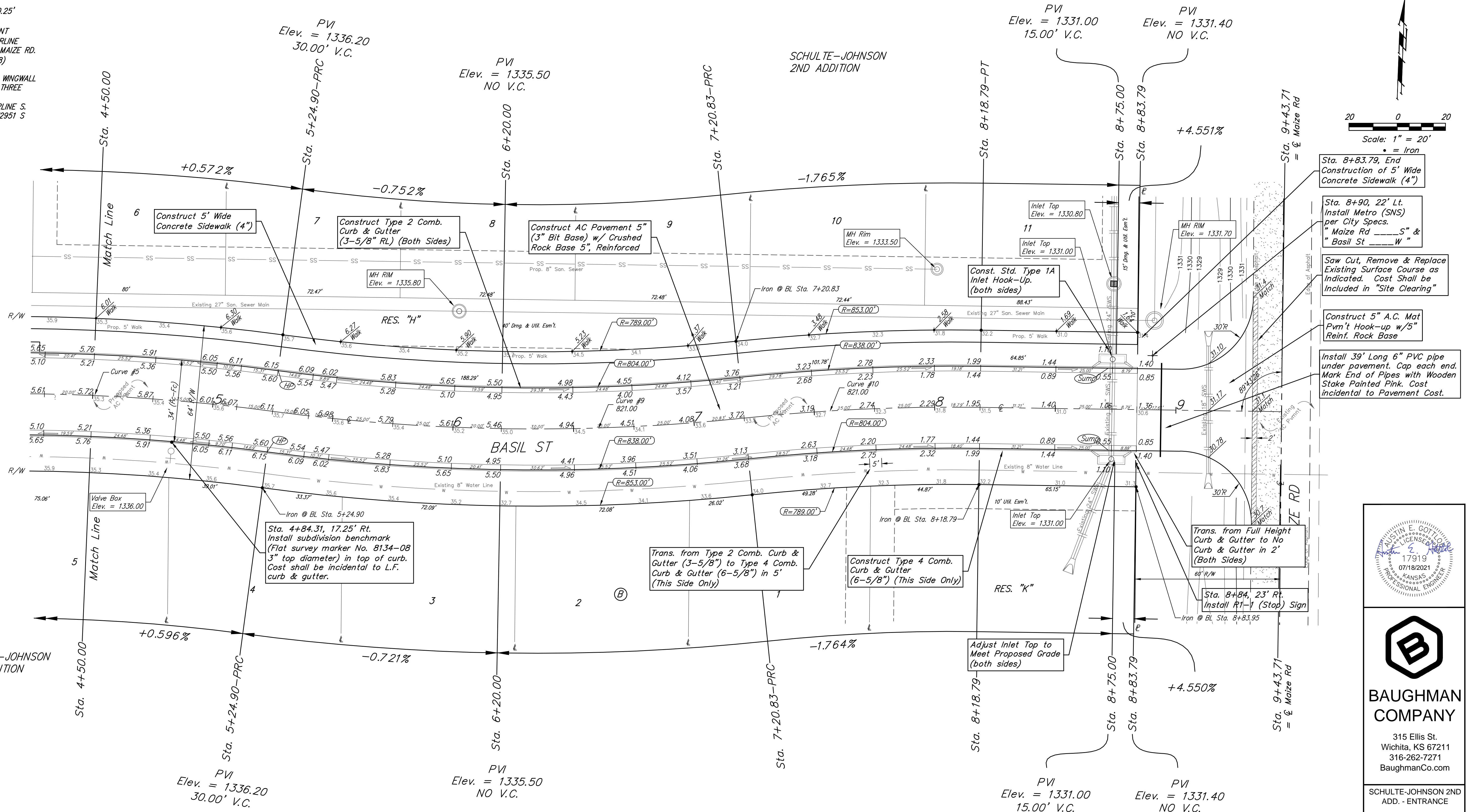


BENCHMARKS:
 CUT OFF "T"-POST, DOWN 0.25'
 13.5' WEST OF POWER POLE
 30' SOUTH OF FIRE HYDRANT
 +/- 200' SOUTH OF CENTERLINE
 DRIVE TO HOUSE # 2816 S MAIZE RD.
 ELEV. = 1328.386 (NAVD 88)

SQUARE CUT WITH + IN SW WINGWALL
 OF THE SOUTHERNMOST OF THREE
 CONCRETE DITCH CHECKS
 +/- 1125' WEST OF CENTERLINE S.
 MAIZE RD, BEHIND HOUSE #2951 S
 MAIZE RD.
 ELEV. = 1332.383 (NAVD88)



- Sta. 8+83.79, End Construction of 5' Wide Concrete Sidewalk (4")
- Sta. 8+90, 22' Lt. Install Metro (SNS) per City Specs. "Maize Rd" "S" & "Basil St" "W"
- Saw Cut, Remove & Replace Existing Surface Course as Indicated. Cost Shall be Included in "Site Clearing"
- Construct 5" A.C. Mat Pvm't Hook-up w/5" Reinf. Rock Base
- Install 39' Long 6" PVC pipe under pavement. Cap each end. Mark End of Pipes with Wooden Stake Painted Pink. Cost incidental to Pavement Cost.

Curve #9
 Curve Data Based on Centerline
 Rad. = 821' Delta = 13°40'24" Tangent = 98.43'
 Arc = 195.93' L.C. = 195.46' Def./Ft. = 2.09360 Min.

Station	Arc	Face Chord Lengths		Defl.	Total Defl.
		8' Left	8' Right		
5+24.90	-	-	-	0'00'00"	0'00'00"
5+50.00	25.10'	24.33'	25.86'	0'52'33"	0'52'33"
5+75.00	25.00'	24.24'	25.76'	0'52'20"	1'44'53"
6+00.00	25.00'	24.24'	25.76'	0'52'21"	2'37'14"
6+25.00	25.00'	24.24'	25.76'	0'52'20"	3'29'34"
6+50.00	25.00'	24.24'	25.76'	0'52'21"	4'21'55"
6+75.00	25.00'	24.24'	25.76'	0'52'20"	5'14'15"
7+00.00	25.00'	24.24'	25.76'	0'52'20"	6'06'35"
7+20.83	20.83'	20.19'	21.46'	0'43'37"	6'50'12"

Curve #10
 Curve Data Based on Centerline
 Rad. = 821' Delta = 6°50'12" Tangent = 49.04'
 Arc = 97.96' L.C. = 97.91' Def./Ft. = 2.09371 Min.

Station	Arc	Face Chord Lengths		Defl.	Total Defl.
		8' Left	8' Right		
7+20.83	-	-	-	0'00'00"	0'00'00"
7+25.00	4.17'	4.30'	4.04'	0'08'44"	0'08'44"
7+50.00	25.00'	25.76'	24.24'	0'52'20"	1'01'04"
7+75.00	25.00'	25.76'	24.24'	0'52'21"	1'53'25"
8+00.00	25.00'	25.76'	24.24'	0'52'21"	2'45'46"
8+18.79	18.79'	19.36'	18.22'	0'39'20"	3'25'06"

Roll type curb & gutter to be constructed on the pavement on this sheet. Top of curb elevation are given for full height curb.

BAUGHMAN COMPANY
 315 Ellis St.
 Wichita, KS 67211
 316-262-7271
 BaughmanCo.com

SCHULTE-JOHNSON 2ND ADD. - ENTRANCE

BASIL ST

Sta. 4+50.00 to Sta. 8+83.79

PROJECT NUMBER:
472-2020-085633

DESIGN: AEG DRAWN: HWJ
 DATE: July 19, 2021

SHEET OF
 10 26

File: E:\Projects\Schulte-Johnson 2nd Addition\Engineering\Phase 1\STRISTR Plans.dwg