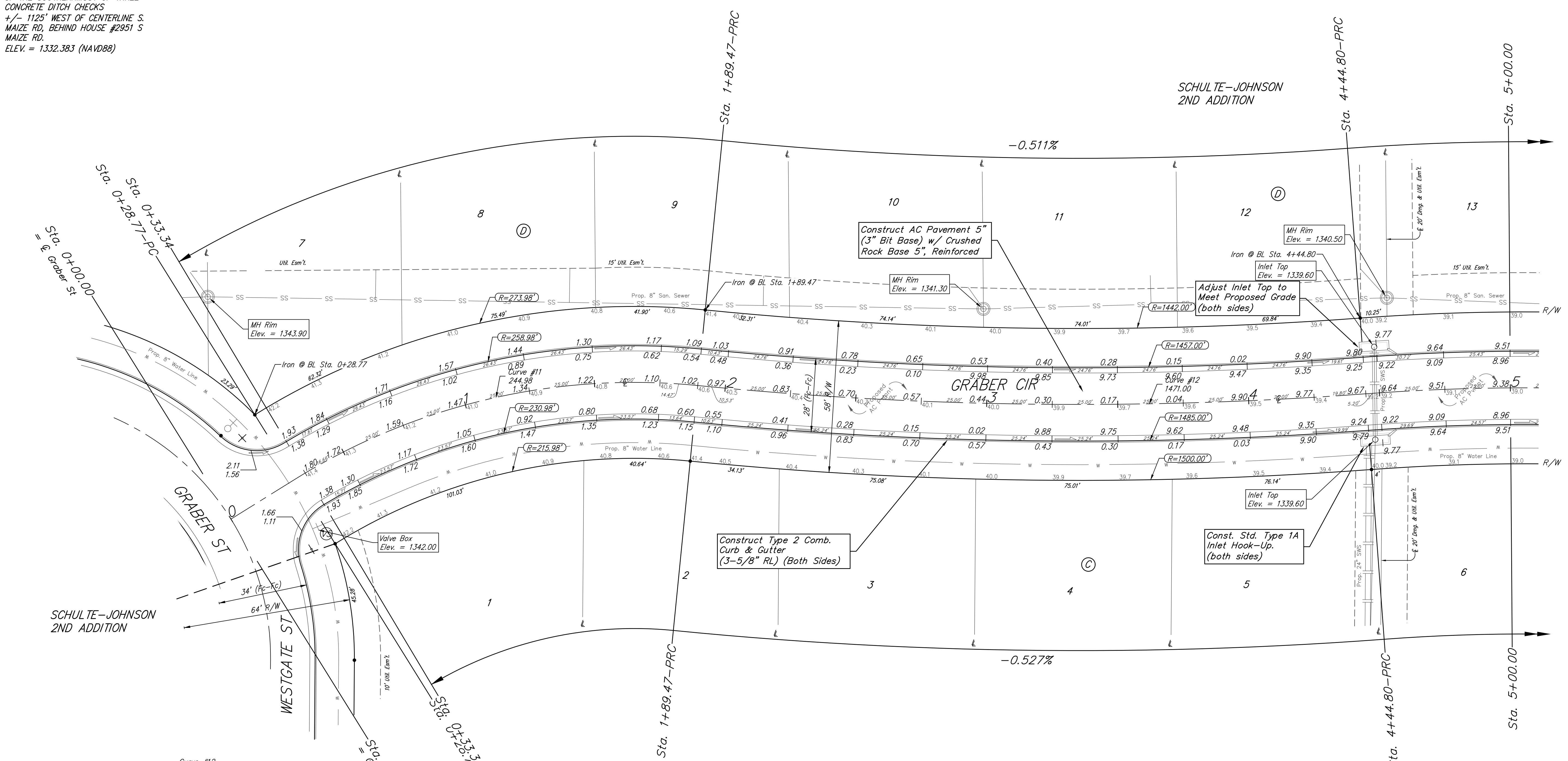
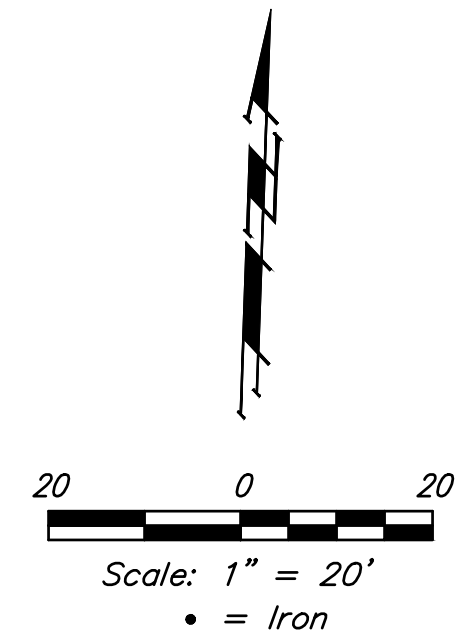


BENCHMARKS:
 CUT OFF "T"-POST, DOWN 0.25'
 13.5' WEST OF POWER POLE
 30' SOUTH OF FIRE HYDRANT
 +/- 200' SOUTH OF CENTERLINE
 DRIVE TO HOUSE # 2816 S MAIZE RD.
 ELEV. = 1328.386 (NAVD 88)

SQUARE CUT WITH + IN SW WINGWALL
 OF THE SOUTHERNMOST OF THREE
 CONCRETE DITCH CHECKS
 +/- 1125' WEST OF CENTERLINE S.
 MAIZE RD, BEHIND HOUSE #2951 S
 MAIZE RD.
 ELEV. = 1332.383 (NAVD88)



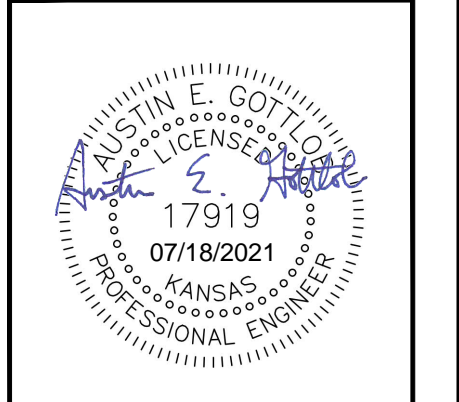
Curve #12
 Curve Data Based on Centerline
 Rad. = 1471' Delta = 9°56'42" Tangent = 127.98'
 Arc = 255.33' L.C. = 255.01' Def./Ft. = 1.16849 Min.

Station	Arc	Face Chord Lengths		Defl.	Total Defl.
		8' Left	8' Right		
1+89.47	-	-	-	0'00"00"	0'00"00"
2+00.00	10.53'	10.37'	10.69'	0'12"18"	0'12"18"
2+25.00	25.00'	24.63'	25.37'	0'29"13"	0'41"31"
2+50.00	25.00'	24.63'	25.37'	0'29"13"	1'10"44"
2+75.00	25.00'	24.63'	25.37'	0'29"12"	1'39"56"
3+00.00	25.00'	24.63'	25.37'	0'29"13"	2'09"09"
3+25.00	25.00'	24.63'	25.37'	0'29"13"	2'38"22"
3+50.00	25.00'	24.63'	25.37'	0'29"13"	3'07"35"
3+75.00	25.00'	24.63'	25.37'	0'29"12"	3'36"47"
4+00.00	25.00'	24.63'	25.37'	0'29"13"	4'06"00"
4+25.00	25.00'	24.63'	25.37'	0'29"13"	4'35"13"
4+44.80	19.80'	19.50'	20.10'	0'23"08"	4'58"21"

Curve #11
 Curve Data Based on Centerline
 Rad. = 244.98' Delta = 37°34'59" Tangent = 83.36'
 Arc = 160.70' L.C. = 157.83' Def./Ft. = 7.01613 Min.

Station	Arc	Face Chord Lengths		Defl.	Total Defl.
		8' Left	8' Right		
0+28.77	-	-	-	0'00"00"	0'00"00"
0+50.00	21.23'	23.13'	19.32'	2'28"57"	2'28"57"
0+75.00	25.00'	27.23'	22.74'	2'55"24"	5'24"21"
1+00.00	25.00'	27.23'	22.74'	2'55"25"	8'19"46"
1+25.00	25.00'	27.23'	22.74'	2'55"24"	11'15"10"
1+50.00	25.00'	27.23'	22.74'	2'55"24"	14'10"34"
1+75.00	25.00'	27.23'	22.74'	2'55"24"	17'05"58"
1+89.47	14.47'	15.77'	13.17'	1'41"31"	18'47"29"

Roll type curb & gutter to be constructed on the pavement on this sheet.
 Top of curb elevation are given for full height curb.



BAUGHMAN COMPANY
 315 Ellis St.
 Wichita, KS 67211
 316-262-7271
 BaughmanCo.com

SCHULTE-JOHNSON 2ND ADD. - PHASE 1A

GRABER CIR

Sta. 0+00.00 to Sta. 5+00.00
 PROJECT NUMBER: 472-2019-085545
 DESIGN: AEG DRAWN: HJW
 DATE: July 19, 2021
 SHEET 11 OF 26

File: C:\Projects\Schulte-Johnson 2nd Addition\Engineering\Phase 1A\STRISTR Plans.dwg