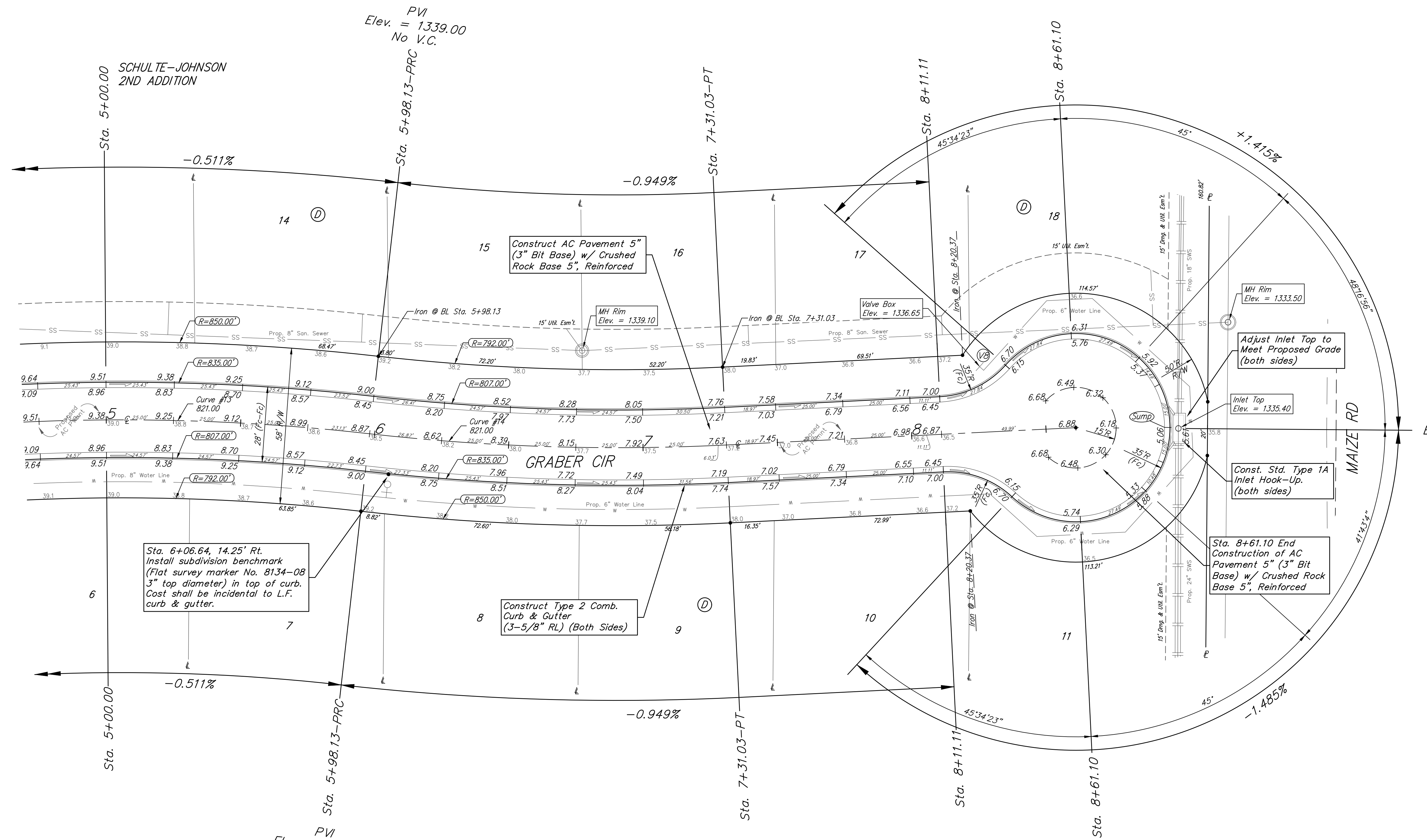
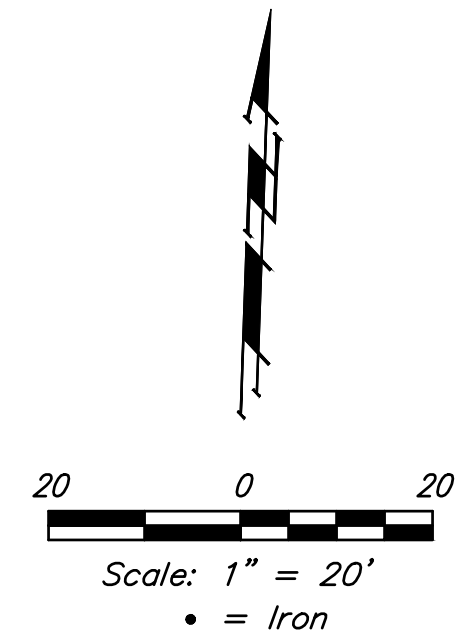


BENCHMARKS:  
 CUT OFF "T"-POST, DOWN 0.25'  
 13.5' WEST OF POWER POLE  
 30' SOUTH OF FIRE HYDRANT  
 +/- 200' SOUTH OF CENTERLINE  
 DRIVE TO HOUSE # 2816 S MAIZE RD.  
 ELEV. = 1328.386 (NAVD 88)

SQUARE CUT WITH + IN SW WINGWALL  
 OF THE SOUTHERNMOST OF THREE  
 CONCRETE DITCH CHECKS  
 +/- 1125' WEST OF CENTERLINE S.  
 MAIZE RD, BEHIND HOUSE #2951 S  
 MAIZE RD.  
 ELEV. = 1332.383 (NAVD88)



Sta. 6+06.64, 14.25' Rt.  
 Install subdivision benchmark  
 (Flat survey marker No. 8134-08  
 3" top diameter) in top of curb.  
 Cost shall be incidental to L.F.  
 curb & gutter.

Construct Type 2 Comb.  
 Curb & Gutter  
 (3-5/8" RL) (Both Sides)

Adjust Inlet Top to  
 Meet Proposed Grade  
 (both sides)

Inlet Top  
 Elev. = 1335.40

Const. Std. Type 1A  
 Inlet Hook-Up.  
 (both sides)

Sta. 8+61.10 End  
 Construction of AC  
 Pavement 5" (3" Bit  
 Base) w/ Crushed Rock  
 Base 5", Reinforced

Curve #13  
 Curve Data Based on Centerline

Rad. = 821' Delta = 10°42'02" Tangent = 76.89'  
 Arc = 153.33' L.C. = 153.11' Def./Ft. = 2.09363 Min.

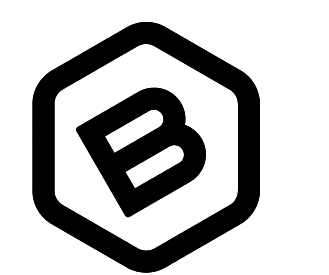
Station	Arc	Face Chord Lengths		Defl.	Total Defl.
		8' Left	8' Right		
4+44.80	-	-	-	0°00'00"	0°00'00"
4+50.00	5.20'	5.34'	5.06'	0°10'53"	0°10'53"
4+75.00	25.00'	25.67'	24.33'	0°52'21"	1°03'14"
5+00.00	25.00'	25.67'	24.33'	0°52'20"	1°56'34"
5+25.00	25.00'	25.67'	24.33'	0°52'21"	2°47'55"
5+50.00	25.00'	25.67'	24.33'	0°52'20"	3°40'15"
5+75.00	25.00'	25.67'	24.33'	0°52'20"	4°32'35"
5+98.13	23.13'	23.75'	22.51'	0°48'26"	5°21'01"

Curve #14  
 Curve Data Based on Centerline

Rad. = 821' Delta = 9°16'29" Tangent = 66.59'  
 Arc = 132.90' L.C. = 132.75' Def./Ft. = 2.09362 Min.

Station	Arc	Face Chord Lengths		Defl.	Total Defl.
		8' Left	8' Right		
5+98.13	-	-	-	0°00'00"	0°00'00"
6+00.00	1.87'	1.82'	1.92'	0°03'55"	0°03'55"
6+25.00	25.00'	24.33'	25.67'	0°52'20"	0°56'15"
6+50.00	25.00'	24.33'	25.67'	0°52'21"	1°48'36"
6+75.00	25.00'	24.33'	25.67'	0°52'20"	2°40'56"
7+00.00	25.00'	24.33'	25.67'	0°52'21"	3°33'17"
7+25.00	25.00'	24.33'	25.67'	0°52'20"	4°25'37"
7+31.03	6.03'	5.87'	6.19'	0°12'38"	4°38'15"

Roll type curb & gutter to  
 be constructed on the pavement  
 on this sheet.  
 Top of curb elevation are given  
 for full height curb.



**BAUGHMAN  
 COMPANY**  
 315 Ellis St.  
 Wichita, KS 67211  
 316-262-7271  
 BaughmanCo.com

SCHULTE-JOHNSON 2ND  
 ADD. - PHASE 1A

**GRABER CIR**

Sta. 5+00.00 to  
 Sta. 8+61.10  
 PROJECT NUMBER:  
 472-2019-085545

DESIGN: AEG DRAWN: HJW  
 DATE: July 19, 2021

SHEET OF  
**12 26**

File: C:\Projects\Schulte-Johnson 2nd Addition\Engineering\Phase 1A\STRISTR Plans.dwg