

**BENCHMARKS:**  
 CUT OFF "T"-POST, DOWN 0.25'  
 13.5' WEST OF POWER POLE  
 30' SOUTH OF FIRE HYDRANT  
 +/- 200' SOUTH OF CENTERLINE  
 DRIVE TO HOUSE # 2816 S MAIZE RD.  
 ELEV. = 1328.386 (NAVD 88)

SQUARE CUT WITH + IN SW WINGWALL  
 OF THE SOUTHERNMOST OF THREE  
 CONCRETE DITCH CHECKS  
 +/- 1125' WEST OF CENTERLINE S.  
 MAIZE RD, BEHIND HOUSE #2951 S  
 MAIZE RD.  
 ELEV. = 1332.383 (NAVD 88)

Curve #4  
 Curve Data Based on Centerline  
 Rad. = 100' Delta = 96°18'49" Tangent = 111.67'  
 Arc = 168.10' L.C. = 148.99' Def./Ft. = 17.18863 Min.

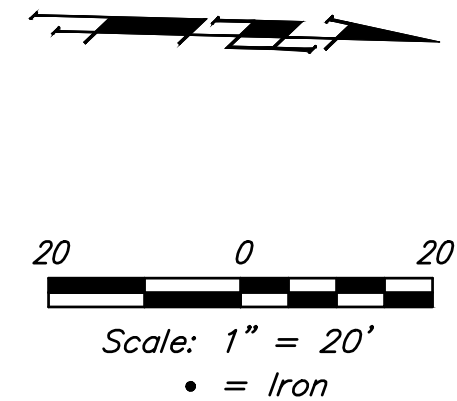
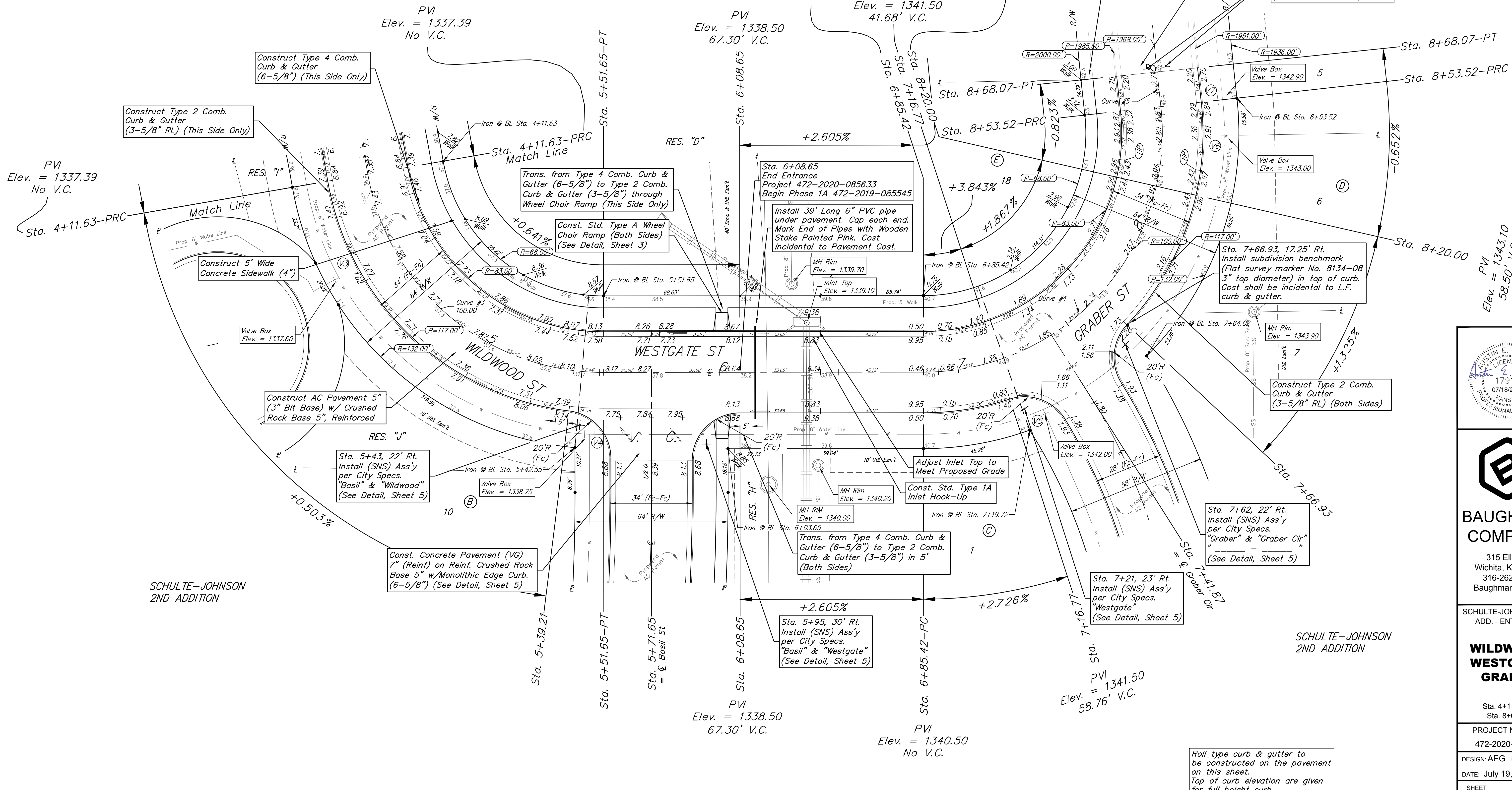
Station	Arc	Face Chord Lengths		Defl.	Total Defl.
		8' Left	8' Right		
6+85.42	-	-	-	0°00'00"	0°00'00"
7+00.00	14.58'	10.93'	18.21'	4°10'37"	4°10'37"
7+25.00	25.00'	18.70'	31.17'	7°09'43"	11°20'20"
7+50.00	25.00'	18.70'	31.17'	7°09'42"	18°30'02"
7+75.00	25.00'	18.70'	31.17'	7°09'43"	25°39'45"
8+00.00	25.00'	18.70'	31.17'	7°09'43"	32°49'28"
8+25.00	25.00'	18.70'	31.17'	7°09'43"	39°59'11"
8+50.00	25.00'	18.70'	31.17'	7°09'43"	47°08'54"
8+53.52	3.52'	2.64'	4.40'	1°00'31"	48°09'25"

Curve #3  
 Curve Data Based on Centerline  
 Rad. = 100' Delta = 80°13'43" Tangent = 84.25'  
 Arc = 140.02' L.C. = 128.86' Def./Ft. = 17.18939 Min.

Station	Arc	Face Chord Lengths		Defl.	Total Defl.
		8' Left	8' Right		
4+11.63	-	-	-	0°00'00"	0°00'00"
4+25.00	13.37'	10.02'	16.70'	3°49'49"	3°49'49"
4+50.00	25.00'	18.70'	31.17'	7°09'44"	10°59'33"
4+75.00	25.00'	18.70'	31.17'	7°09'44"	18°09'17"
5+00.00	25.00'	18.70'	31.17'	7°09'45"	25°19'02"
5+25.00	25.00'	18.70'	31.17'	7°09'44"	32°28'46"
5+51.65	26.65'	19.93'	33.22'	7°38'05"	40°06'51"

Curve #5  
 Curve Data Based on Centerline  
 Rad. = 1968' Delta = 0°25'26" Tangent = 7.28'  
 Arc = 14.55' L.C. = 14.56' Def./Ft. = 0.87400 Min.

Station	Arc	Face Chord Lengths		Defl.	Total Defl.
		8' Left	8' Right		
8+53.52	-	-	-	0°00'00"	0°00'00"
8+68.07	14.55'	14.74'	14.37'	0°12'43"	0°12'43"



**BAUGHMAN COMPANY**  
 315 Ellis St.  
 Wichita, KS 67211  
 316-262-7271  
 BaughmanCo.com

SCHULTE-JOHNSON 2ND  
 ADD. - ENTRANCE

**WILDWOOD/  
 WESTGATE/  
 GRABER**

Sta. 4+11.63 to  
 Sta. 8+68.07

PROJECT NUMBER:  
 472-2020-085633

DESIGN: AEG DRAWN: JHW

DATE: July 19, 2021

SHEET OF  
**8 26**

Roll type curb & gutter to  
 be constructed on the pavement  
 on this sheet.  
 Top of curb elevation are given  
 for full height curb.