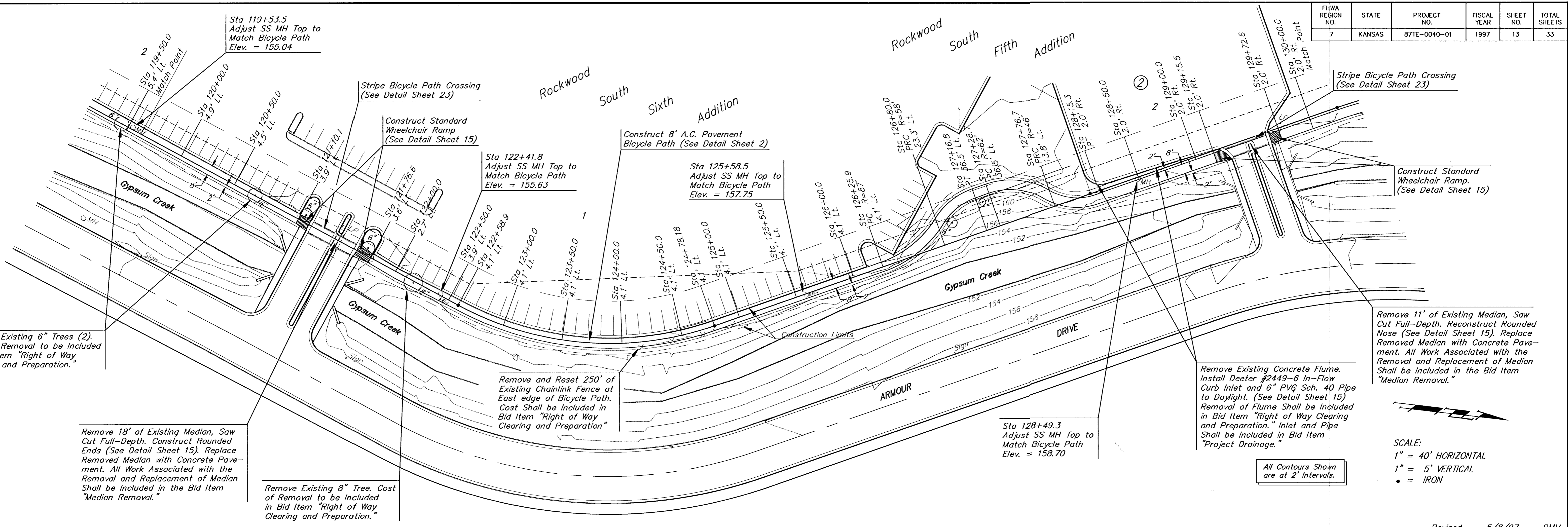


FHWA REGION NO.	STATE	PROJECT NO.	FISCAL YEAR	SHEET NO.	TOTAL SHEETS
7	KANSAS	87TE-0040-01	1997	13	33



Remove 11' of Existing Median, Saw Cut Full-Depth. Reconstruct Rounded Nose (See Detail Sheet 15). Replace Removed Median with Concrete Pavement. All Work Associated with the Removal and Replacement of Median Shall be Included in the Bid Item "Median Removal."

Remove Existing Concrete Flume. Install Deeter #2449-6 In-Flow Curb Inlet and 6" PVC Sch. 40 Pipe to Daylight. (See Detail Sheet 15) Removal of Flume Shall be Included in Bid Item "Right of Way Clearing and Preparation." Inlet and Pipe Shall be Included in Bid Item "Project Drainage."

Remove Existing 8" Tree. Cost of Removal to be Included in Bid Item "Right of Way Clearing and Preparation."

Remove and Reset 250' of Existing Chainlink Fence at East edge of Bicycle Path. Cost Shall be Included in Bid Item "Right of Way Clearing and Preparation"

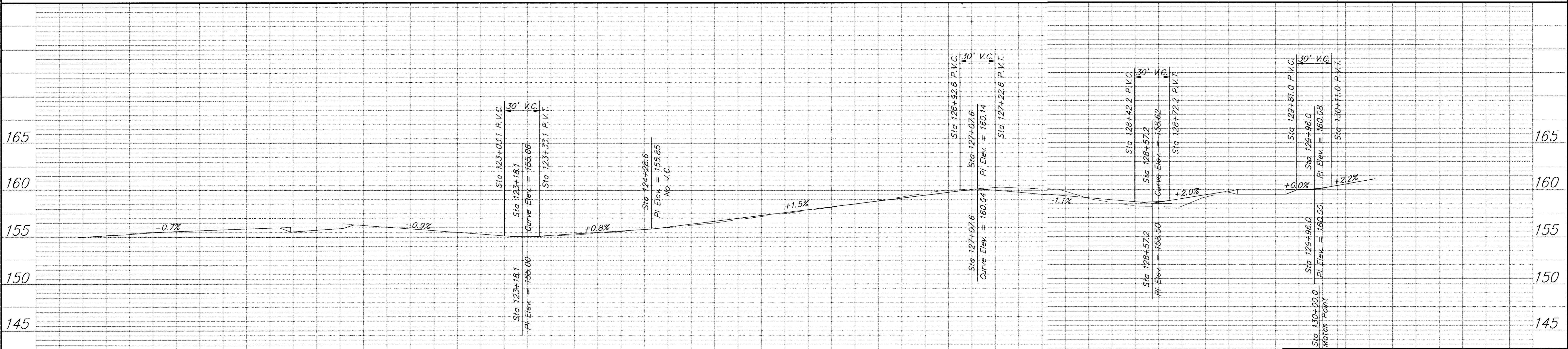
Remove Existing 6" Trees (2). Cost of Removal to be Included in Bid Item "Right of Way Clearing and Preparation."

Remove 18' of Existing Median, Saw Cut Full-Depth. Construct Rounded Ends (See Detail Sheet 15). Replace Removed Median with Concrete Pavement. All Work Associated with the Removal and Replacement of Median Shall be Included in the Bid Item "Median Removal."

SCALE:
 1" = 40' HORIZONTAL
 1" = 5' VERTICAL
 • = IRON

All Contours Shown are at 2' Intervals.

Revised 5/8/97 DMV



GYSUM CREEK BIKE PATH
STATION 119+50.0-130+00.0

BAUGHMAN COMPANY P. A.
 ENGINEERING & SURVEYING
 316/262-7271 • 315 ELLIS • WICHITA, KANSAS 67211

PROJECT NUMBER
472-82573

DESIGN DY/DMV	DRAWN DY/DMV	UTIL. CHECK'D DATE 10-30-95	SCALE NOTED	SHEET OF 13 OF 33
------------------	-----------------	--------------------------------	----------------	---

CPI 5/97/1