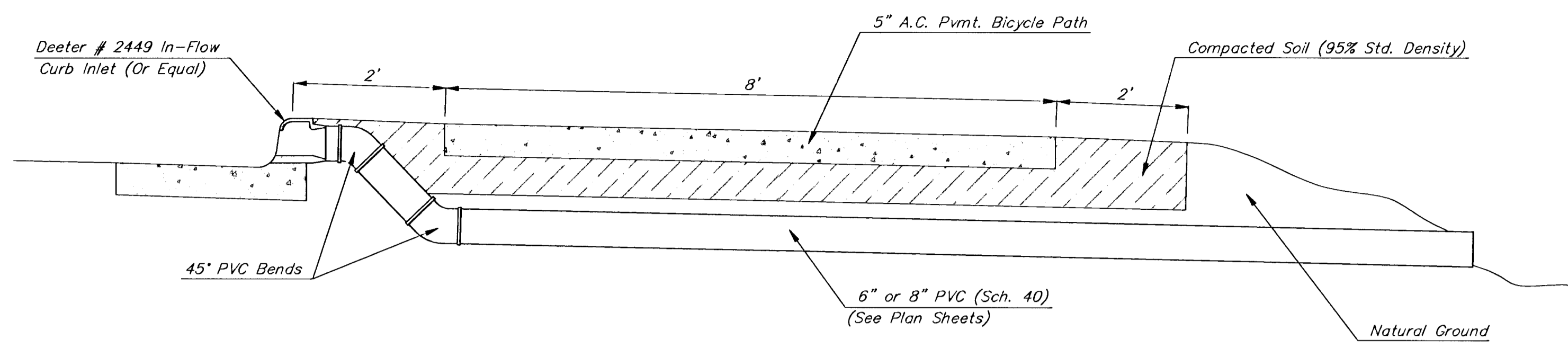
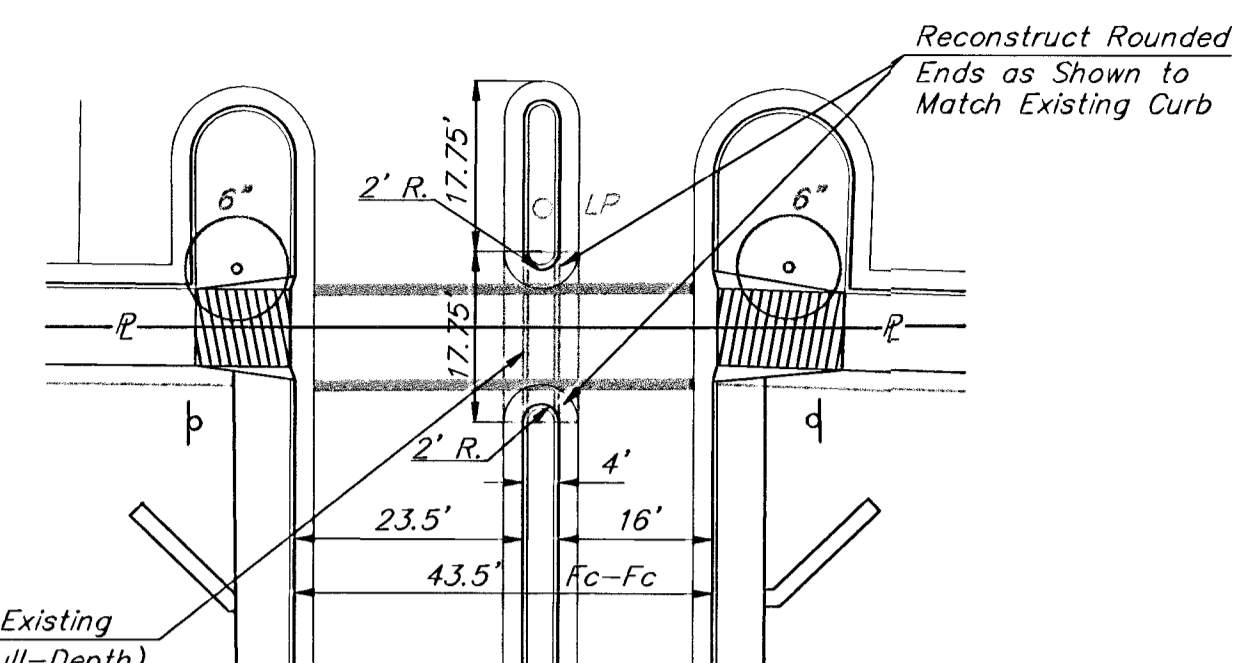


FHWA REGION NO.	STATE	PROJECT NO.	FISCAL YEAR	SHEET NO.	TOTAL SHEETS
7	KANSAS	87TE-0040-01	1997	15	33

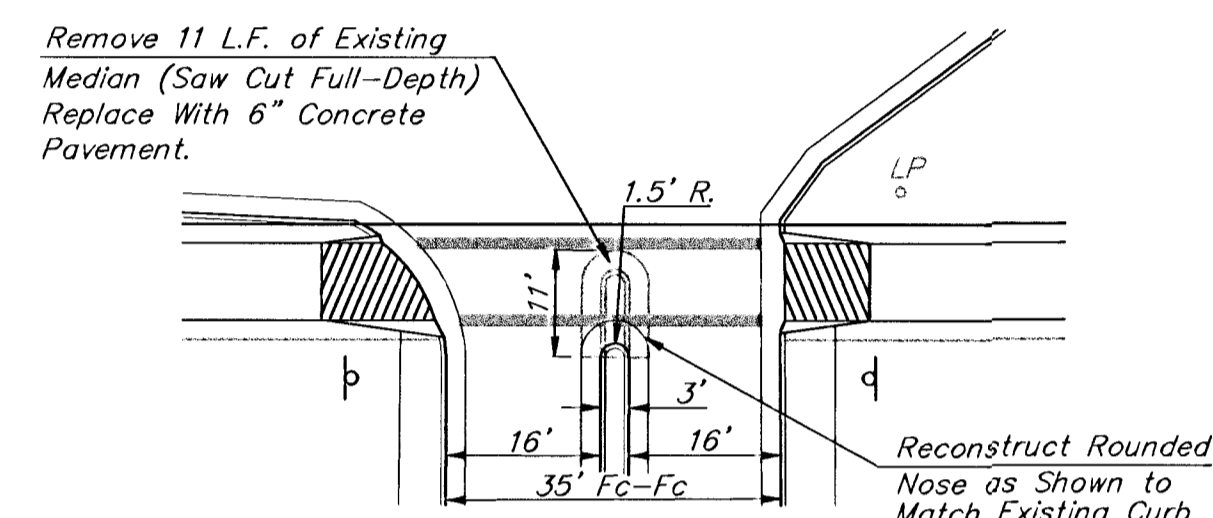


IN-FLOW CURB INLET DETAIL



Remove 18 L.F. of Existing Median (Saw Cut Full-Depth) Replace With 6" Concrete Pavement.

Sta 121+46.1

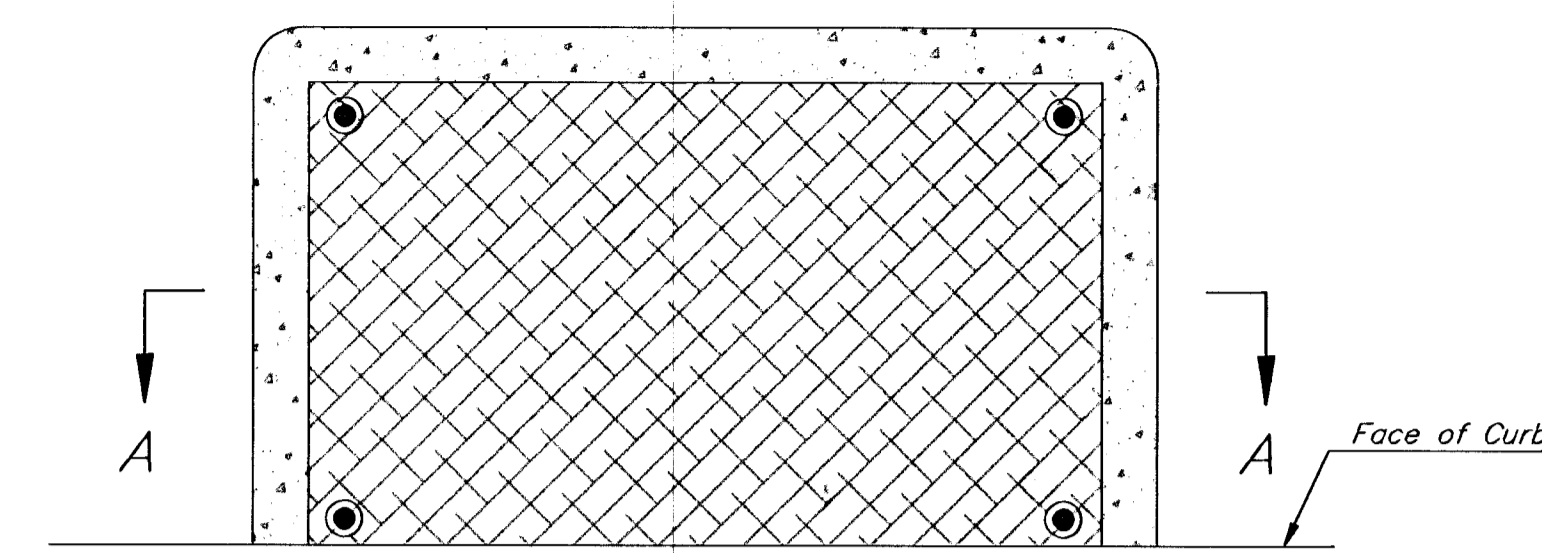


Remove 11 L.F. of Existing Median (Saw Cut Full-Depth) Replace With 6" Concrete Pavement.

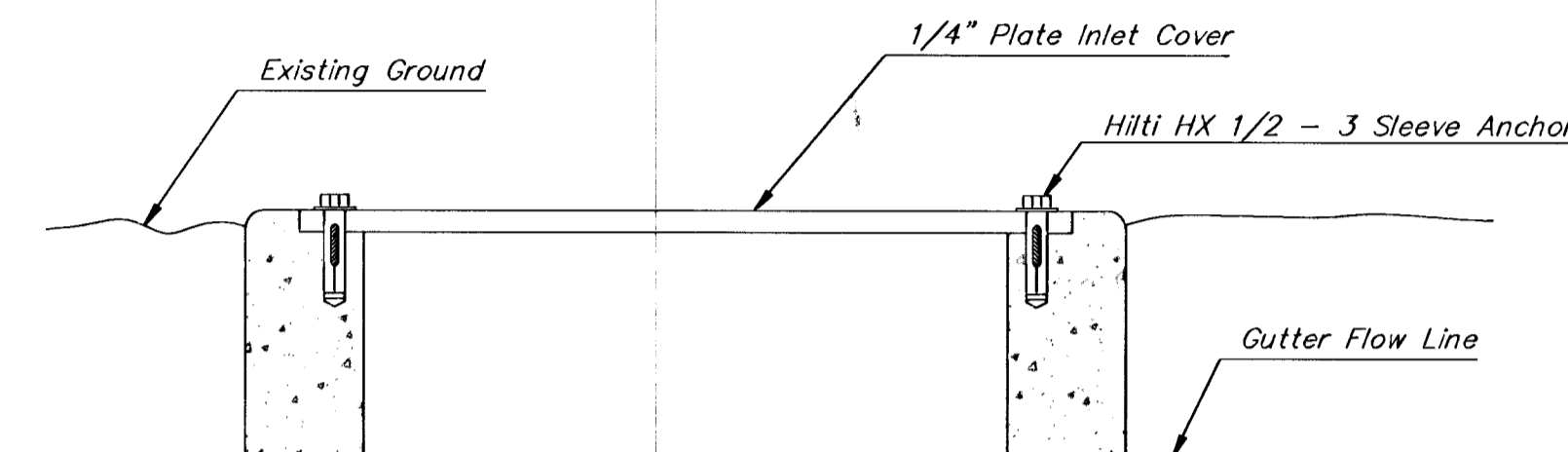
Sta 129+46.1

Note: Removal and Reconstruction Cost to be Included in Lump Sum Bid Item "Median Removal."

MEDIAN RECONSTRUCTION DETAILS



PLAN

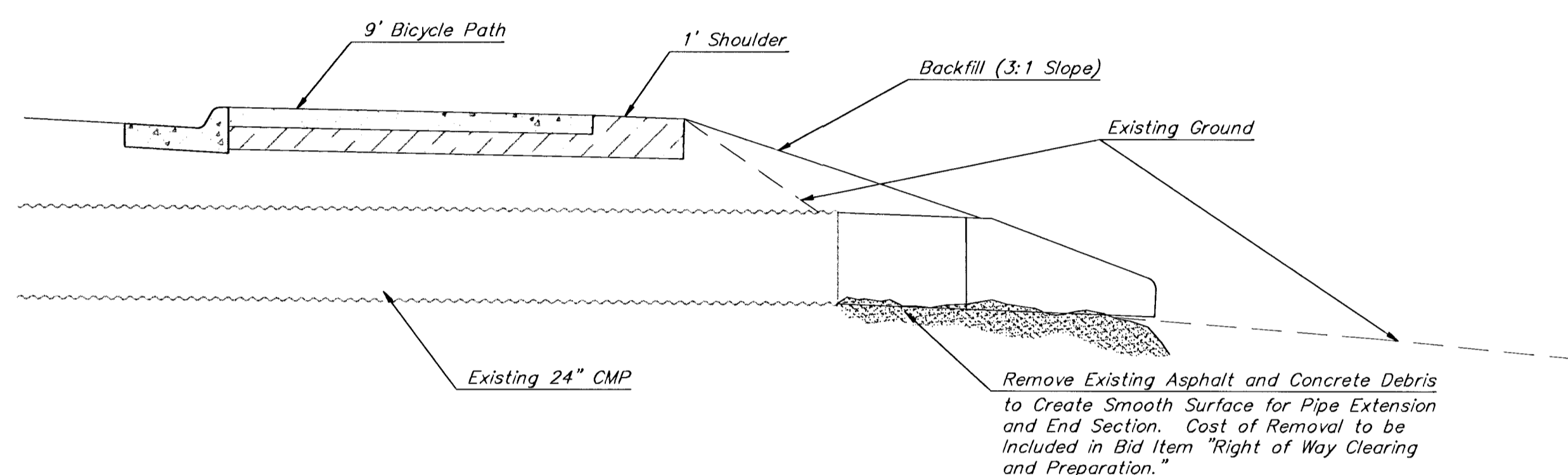


SECTION A-A

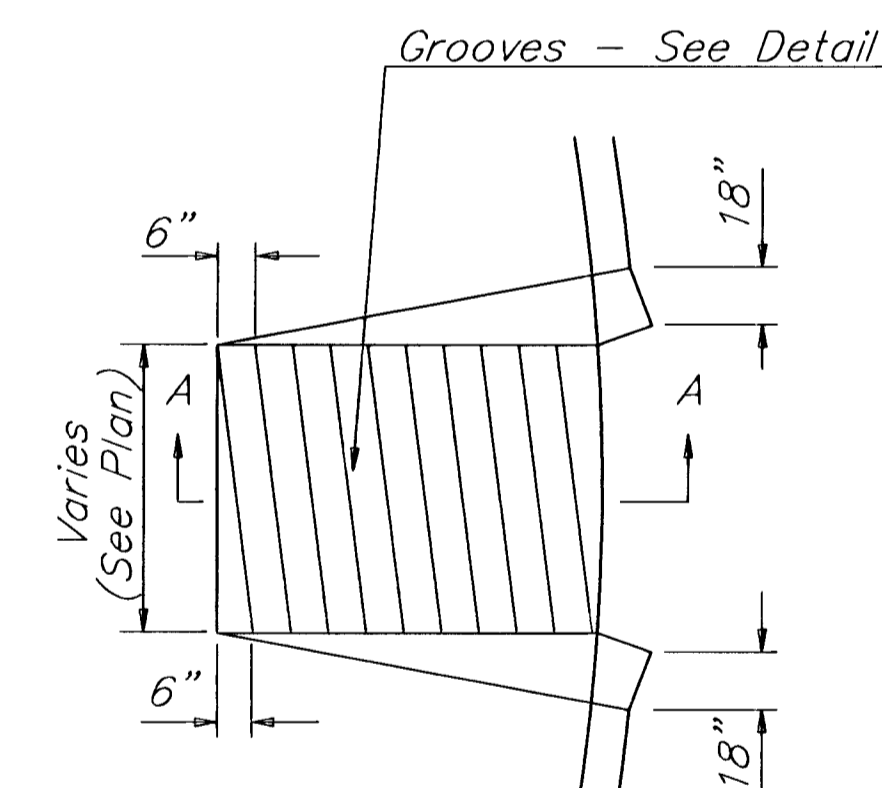
Cost of Inlet Modification Shall be Included in Bid Item "Project Drainage."

Note: If 1/4" Plate Inlet Cover is Damaged, it shall be Replaced by Contractor. Contact Chris Breitenstein at City Storm Sewer Maintenance for Materials (268-4498).

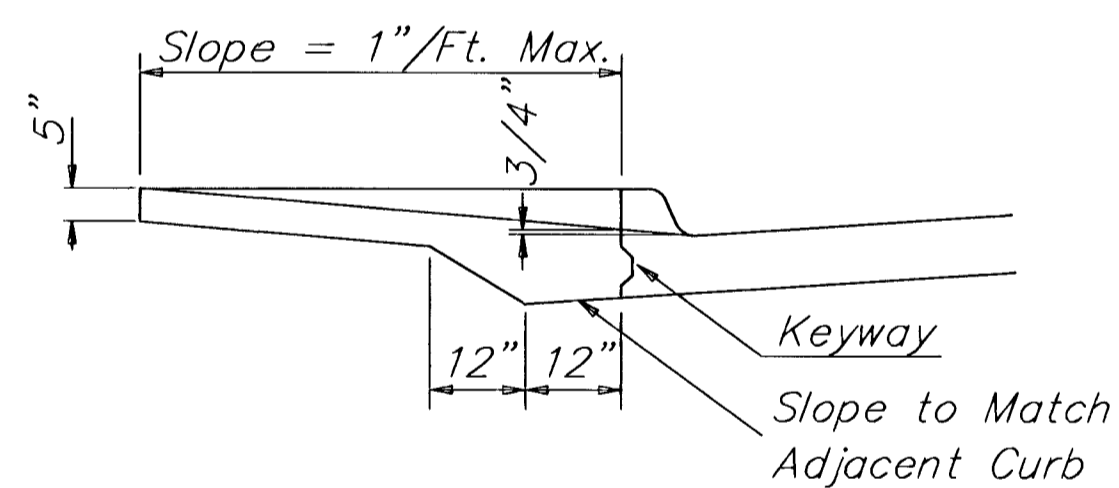
INLET COVER DETAIL



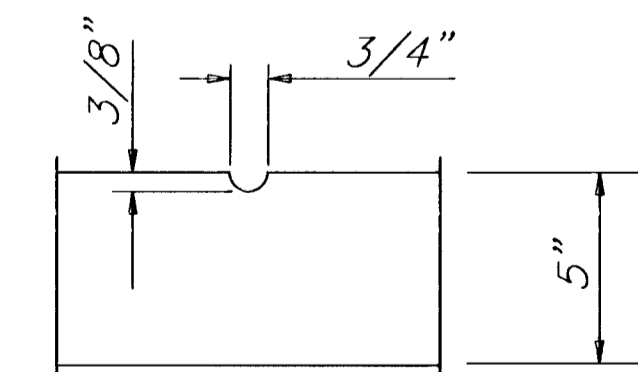
24" CMP EXTENSION DETAIL



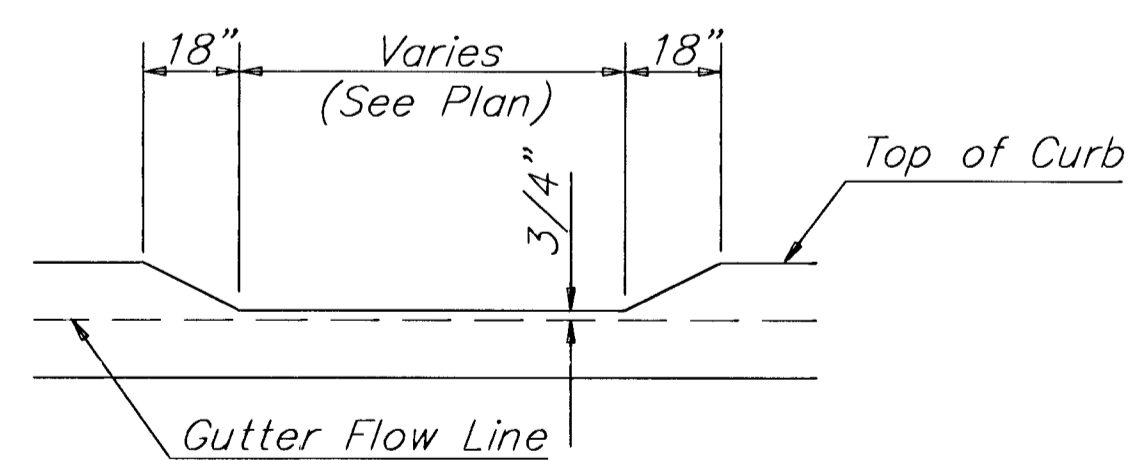
ACCESS RAMP PLAN VIEW



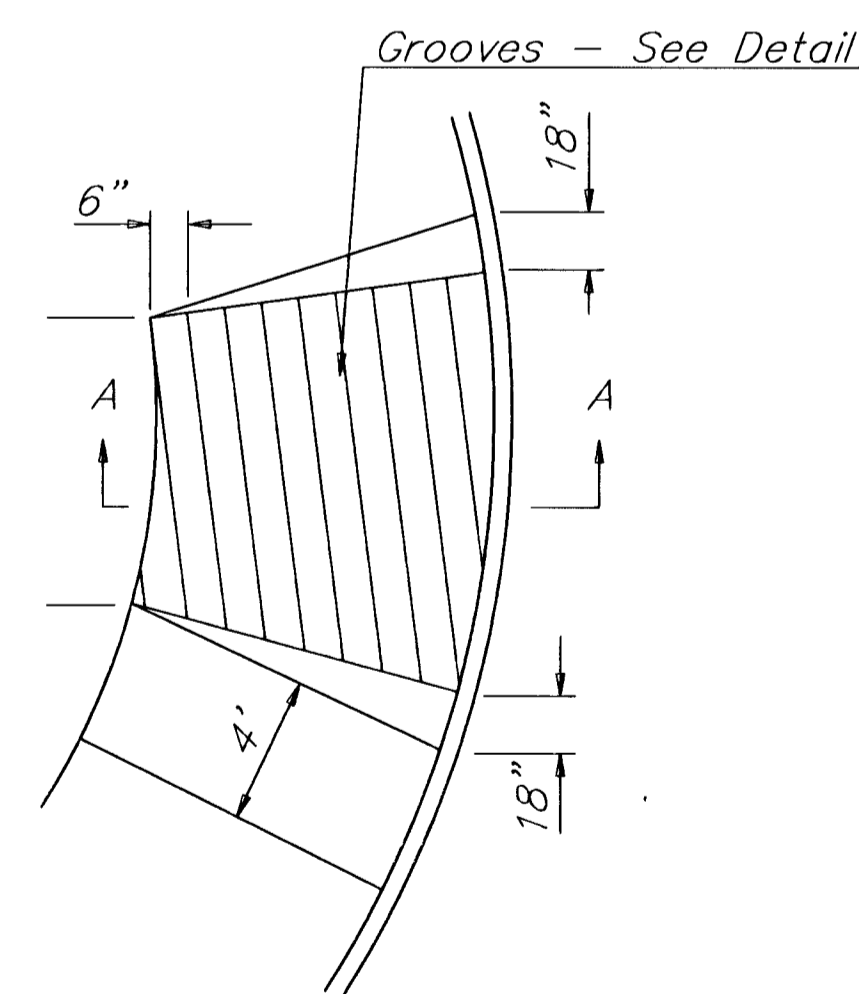
SECTION A-A



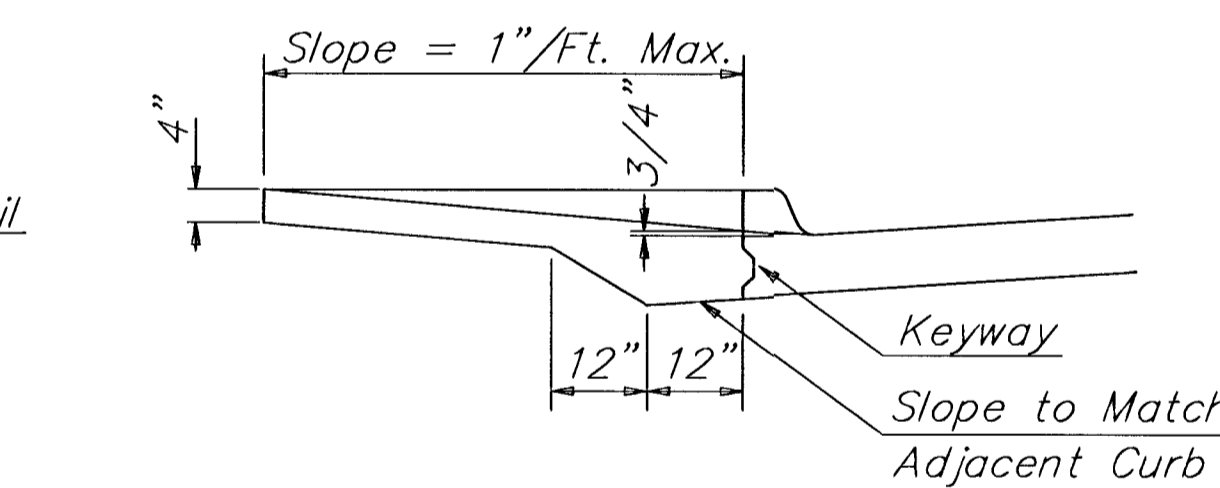
GROOVE DETAIL



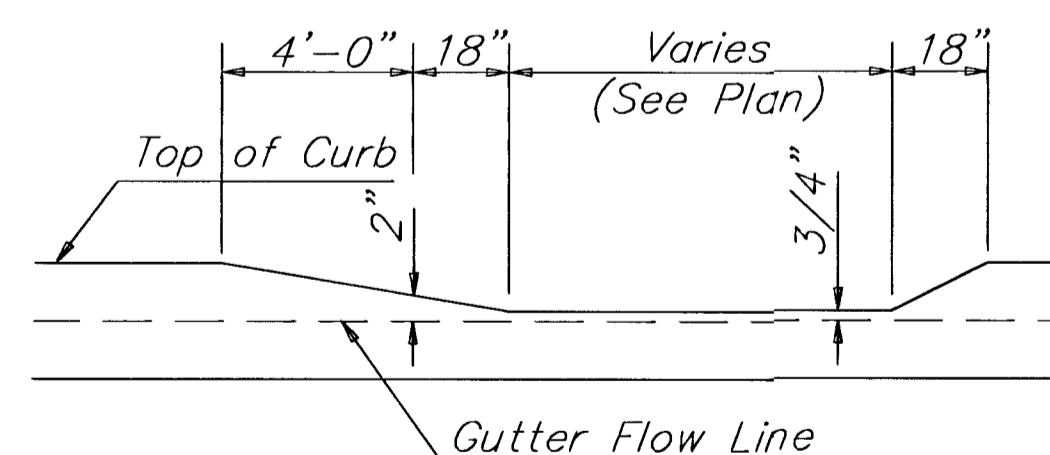
DEPRESSED CURB DETAIL



ACCESS RAMP PLAN VIEW



SECTION A-A



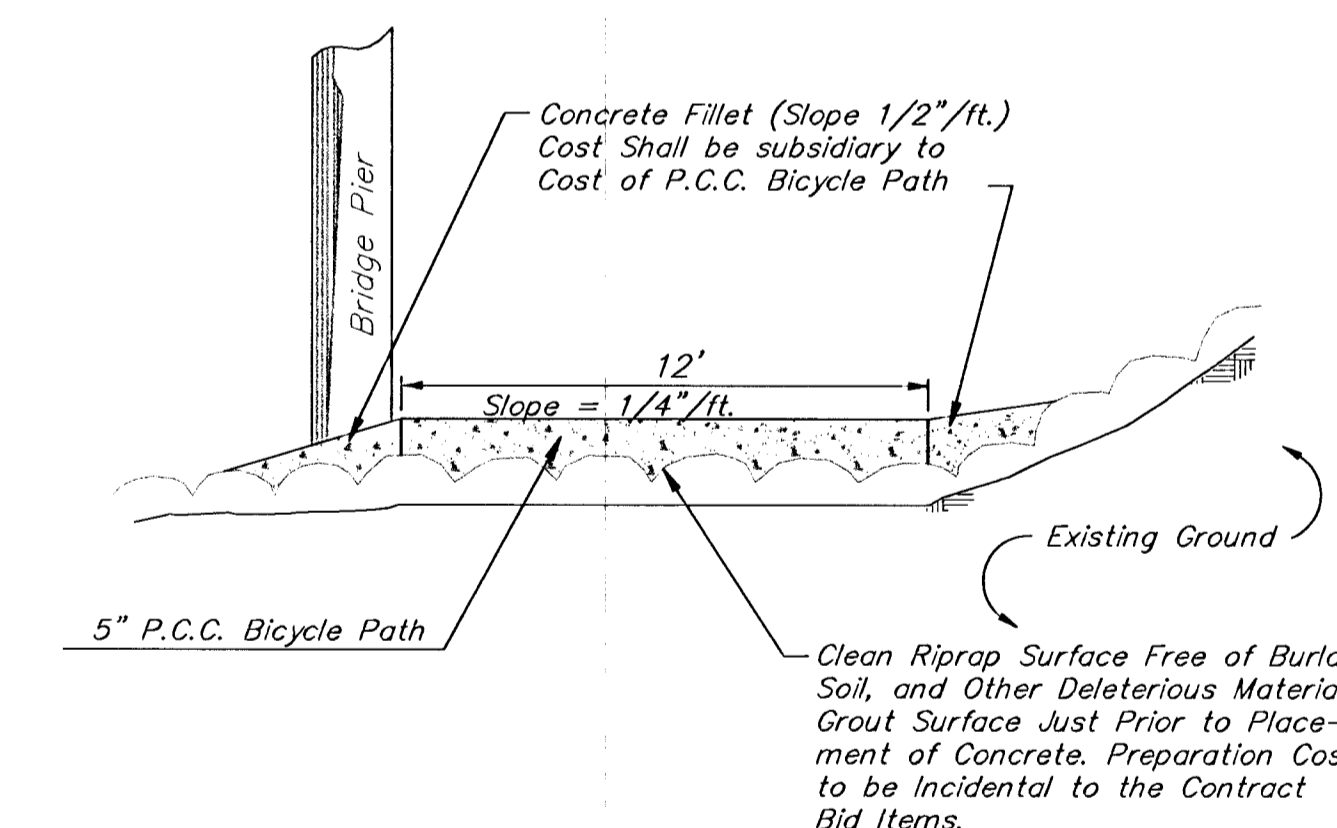
DEPRESSED CURB DETAIL

Note: All work associated with the installation of the wheelchair ramps, including removal of existing curb and gutter and construction of depressed curb and gutter, shall be included in the bid item "Wheelchair Ramp."

ACCESS RAMP DETAIL

Note: All work associated with the installation of the wheelchair ramps, including removal of existing curb and gutter and construction of depressed curb and gutter, shall be included in the bid item "Wheelchair Ramp."

CORNER RAMP DETAIL



PATH UNDER HARRY STREET BRIDGE

Revised 5/8/97 DMV

**GYPSON CREEK BICYCLE PATH
MISCELLANEOUS DETAILS**

BAUGHMAN COMPANY P. A.
ENGINEERING & SURVEYING
316/262-7271 • 315 ELLIS • WICHITA, KANSAS 67211

PROJECT NUMBER
472-82573

DESIGN TA/DMV DRAWN DMV UTIL. CHECK'D DATE 10-30-95 SCALE None SHEET 15 OF 33

93-10-EG30 GYP/DETAILS