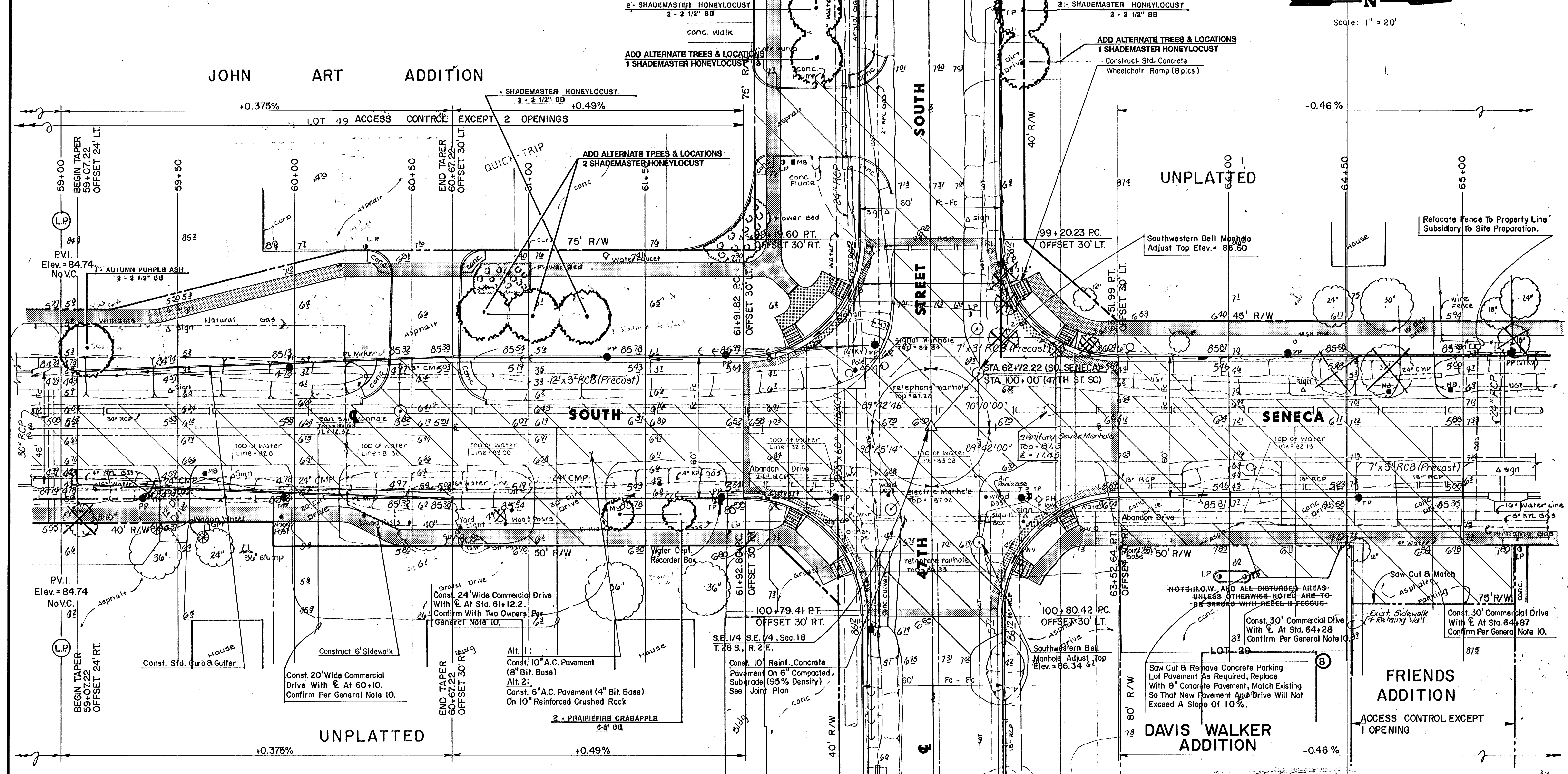


REF. SECTION CORNER STA. 62+72.22 SECTION

1. THIMBLE WITH 3/4" IRON PIPE.
2. 50.87' S.E. TO NAIL & SHINER IN TELEPHONE POLE.
3. 41.70' S.W. TO NAIL & SHINER IN TELEPHONE POLE.
4. 48.80' N.E. TO 3 NAILS IN POWER POLE.



Scale: 1" = 20'



SEWER MANHOLE ADJUSTMENT				WATER VALVE BOX ADJUSTMENT				NOTES
STA.	OFFSET	EXIST. ELEV.	PROP. ELEV.	STA.	OFFSET	EXIST. ELEV.	PROP. ELEV.	
60+45	7' Lt.	88.68'	85.58	62+32	N.A.	N.A.		Field Verify
63+24	7' Lt.	N.A.	88.55	63+00	N.A.	N.A.		Air Release Relocated By Others
				63+10	N.A.	N.A.		Field Verify
				63+18	30' Rt.			Relocated By Others
				63+42	43' Rt.	87.47	88.90	FH/WH
				63+47	36' Rt.	N.A.		Field Verify

INTERSECTION QUANTITIES
 1945 S.Y. Reinforced Concrete Pavement
 314 L.F. Combined Curb & Gutter (Full Height)

SOUTH SENECA IMPROVEMENTS

LANDSCAPE PLAN

48TH ST. SO. TO MACARTHUR RD.

MID-KANSAS ENGINEERING CONSULTANTS PA
 3500 NORTH ROCK ROAD
 BUILDING #800
 WICHITA, KANSAS 67226

638-6668

Design: _____
 Drawn by: _____
 Checked by: DCH
 Date: DEC., 1992
 Job no: _____

Sheet **3**
 of **12**