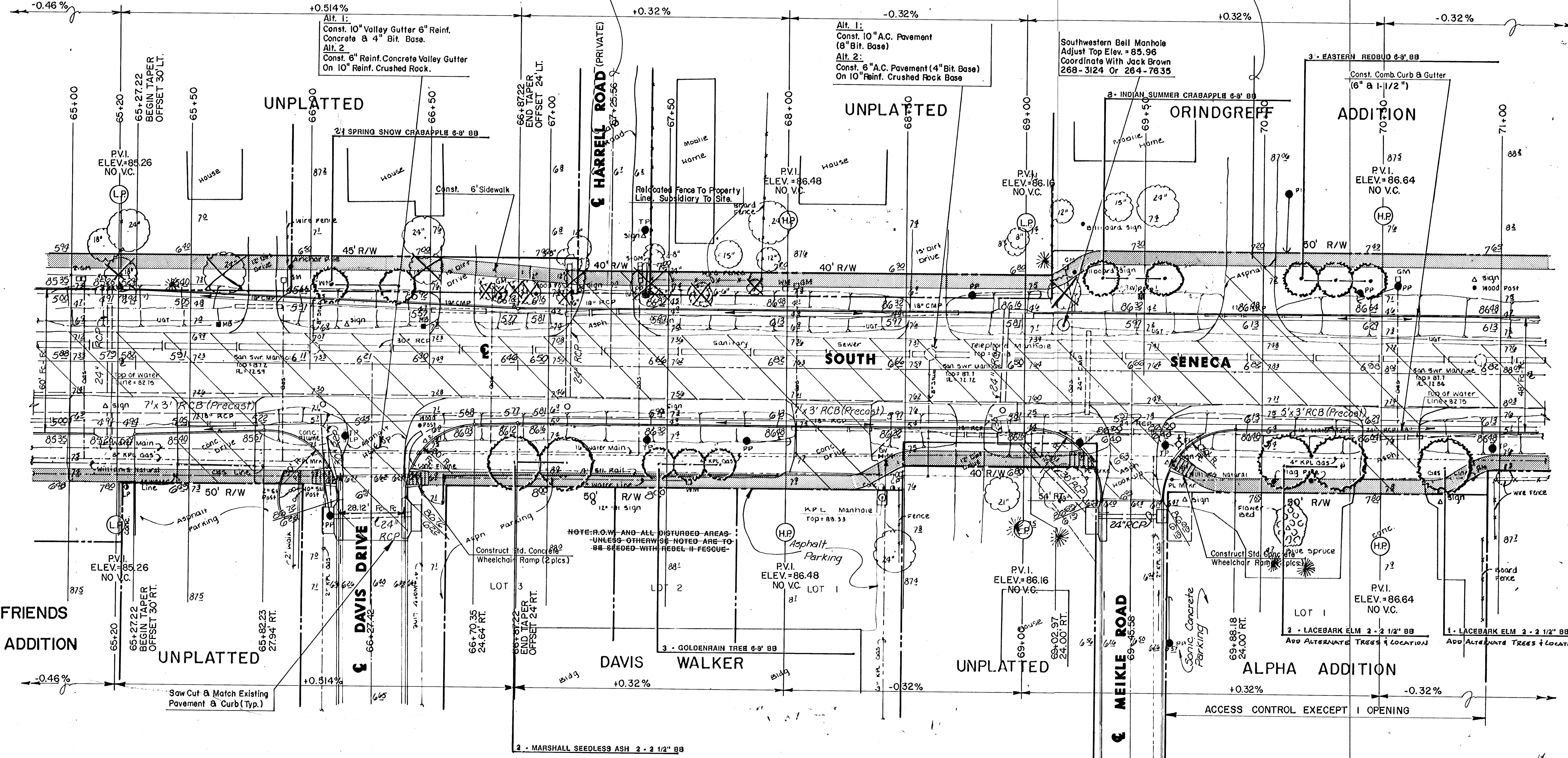




Scale: 1" = 20'

Const. 20' Wide Standard Drive Entrance
At Sta. 67+25. Confirm Per General
Note 10.


Const. 22' Wide Common Drive
With $\frac{1}{2}$ " At Sta. 69+96. Confirm
Per General Note 10.



NOTE: R.O.W. AND ALL DISTURBED AREAS
UNLESS OTHERWISE NOTED ARE TO
BE SEEDED WITH REBEL II FESCUE

ACCESS CONTROL EXCEPT 1 OPENING

SEWER MANHOLE ADJUSTMENT				WATER VALVE BOX ADJUSTMENT				
STA.	OFFSET	EXIST. ELEV.	PROP. ELEV.	STA.	OFFSET	EXIST. ELEV.	PROP. ELEV.	NOTES
66+02	7' LT.	87.20	85.88					
68+60	7' LT.	87.70	86.39					
70+92	8' LT.	87.70	86.84					



**SOUTH SENECA
IMPROVEMENTS**

LANDSCAPE PLAN

48TH ST. SO. TO MACARTHUR RD.

Design
Drawn by
Checked by
Date
JOB NO.

DEC. 1992

MID-KANSAS ENGINEERING CONSULTANTS PA
3500 NORTH ROCK ROAD
BUILDING 1800
WICHITA, KANSAS 67228

636-5566

Sheet
4

of
12