

# GENERAL NOTES:

- The Contractor shall comply with all applicable safety regulations. All construction shall be completed following current City Standard Specifications and Special Provisions.
- Contractor will be required to provide notice to utility companies a minimum of seventy-two (72) hours prior to any excavation, as follows:  
 Kansas One-Call 687-2470  
 The Contractor must notify the following in case of an emergency:  
 AT&T 1-800-246-8464  
 Black Hills Energy 1-800-694-8989  
 City of Wichita Water & Sewer 1-316-219-8921  
 City of Wichita Stormwater 1-316-268-4090  
 City of Wichita Traffic 1-316-268-4034  
 Cox Communications 1-888-249-3530  
 Kansas Gas Service 1-888-482-4950  
 Eergy 1-800-544-4857
- Utility service lines, poles, etc. are to be adjusted as necessary by others prior to construction unless the plans specifically call for their adjustment by the Contractor or unless the plans specifically identify a utility to be adjusted by its owner during construction. Existing utilities and their location, as shown on the plans, represent the best information obtainable for design. The Contractor will be required to work around existing utilities within the right-of-way which do not conflict with proposed construction.
- Rubble from the removal of miscellaneous structures and excess excavation which is to be wasted shall be disposed of on sites to be provided by the Contractor. These sites shall be approved by the Engineer as to suitability, appearance and site location. Locations, in the opinion of the Engineer, that will leave an unsightly appearance will not be approved. All disposal sites must be approved by the Kansas Department of Health and Environment. Material either stockpiled or disposed of in a flood plain will require a Kansas State Board of Agriculture permit. Any material dumped in waters of the United States or wetlands is subject to U.S. Corps. of Engineers permitting regulations. Any material buried or stockpiled beyond approved construction limits will require additional archaeological investigations unless buried in a previously approved borrow location.
- Trees and shrubs in public right-of-way which are in direct conflict with proposed new construction shall be removed by the Contractor with the City Engineer's approval. Trees and shrubs which are not in direct conflict with proposed new construction shall be saved and protected from damage.
- The Contractor shall give all property owners and/or tenants of developed property abutting the construction of this project a minimum of ten (10) days notice prior to start of construction.
- The Contractor shall be responsible for preserving property irons. The Contractor will be required to re-establish any property irons which are damaged or destroyed by his construction operations. Such irons shall be re-established by a licensed land surveyor in accordance with state laws
- All elevations shown are NAVD 88.
- Contractor shall limit the extent of trench openings overnight and weekends to less than 50 feet.
- The Contractor shall protect from damage and support existing utilities through construction as approved by the utility owner and the Engineer at the contractor's expense.
- All existing and proposed erosion control measures including silt fencing, erosion control mat, straw bales, inlet barriers, and const. entrance shall be maintained throughout construction by the contractor and until project is accepted by the City of Wichita. The on-site engineer shall complete weekly reports on the status of erosion control measures. The contractor shall be required to comply with maintenance and/or replacement of erosion control measures as determined by the on-site engineer until project is accepted by City of Wichita. Maintenance and/or replacement of erosion control measures to be paid by L.S. bid item "Maintain Existing BMPs".

- Any areas within or directly adjacent to Res. "D" disturbed during construction shall be seeded and mulched as follows:  
 Seed -- Kansas Premium Fescue Blend; 8 lbs. PLS/1000 Sq. Ft.  
 Annual Rye grass; 3 lbs./1000 Sq. Ft.  
 Fertilizer -- 12-24-12 Ratio; 45 Lbs./Ac.  
 Mulch -- 2 Tons Prairie Hay/Ac.  
 All other disturbed areas are to be seeded as follows:  
 Seed -- Rye grass; 5 lbs./1000 Sq. Ft.  
 All costs associated with seeding including mobilization, preparation of ground, seeding, fertilizing, mulching, etc. shall be included in the L.S. bid item "Seeding".  
 An additional bid item for "Seeding, Temporary" has been included and may be used at the discretion of the design engineer. Temporary seed shall be Annual Rye at 5 lbs./1000 Sq. Ft. unless otherwise noted and shall be planted when permanent seed or sod cannot be used due to seasonal limitations. If the "Seeding, Temporary" bid item is not used, 100% of the pay item will be deducted from the contract. All costs associated with temporary seeding including mobilization, preparation of ground, seeding, etc., shall be included in the L.S. bid item "Seeding, Temporary".

- All stubs and capped pipes shall be located with green plastic tape in the same manner as risers.
- Connecting to Existing Manholes:  
 Prior to laying sewer lines using existing stubs in existing manholes, the Contractor shall expose and verify the elevation, grade and alignment of existing stubs and notify the Engineer of any deviation from the plans. Where the stub is unusable due to elevation grade or alignment, the Contractor shall remove the stub and plug the hole, and reshape the existing manhole invert to provide smooth flow. Where connection to an existing manhole that does not have an existing stub, the Contractor shall core cut into existing manhole wall to make connection using approved water stop gasket, and reshape the existing manhole invert to provide smooth flow. The cost of connect to existing manholes is incidental to the project.
- Contractor shall provide positive drainage away from all manhole covers.
- The Contractor shall prevent any construction debris from entering the existing sanitary sewer during construction.
- The developer for this project is Richard A. Niedens, Progressive Opportunities LLC, (316)721-8686, richard@comforthomesinc.com.

## Benchmarks

BM #1: "□" with cross on curb inlet near the SE corner of Lot 8, Block 4, Cheryl's Hollow 2nd Addition.  
 Elev. = 1364.97 (NAVD 88).

BM #2: "□" with cross on curb inlet near the SE corner of Lot 9, Block 10, Cheryl's Hollow 2nd Addition.  
 Elev. = 1363.50 (NAVD 88).

# SANITARY SEWER IMPROVEMENTS to serve **CHERYL'S HOLLOW 2ND ADD.** **Ph. 3**

## CITY OF WICHITA, KANSAS

Gary Janzen, P.E. City Engineer

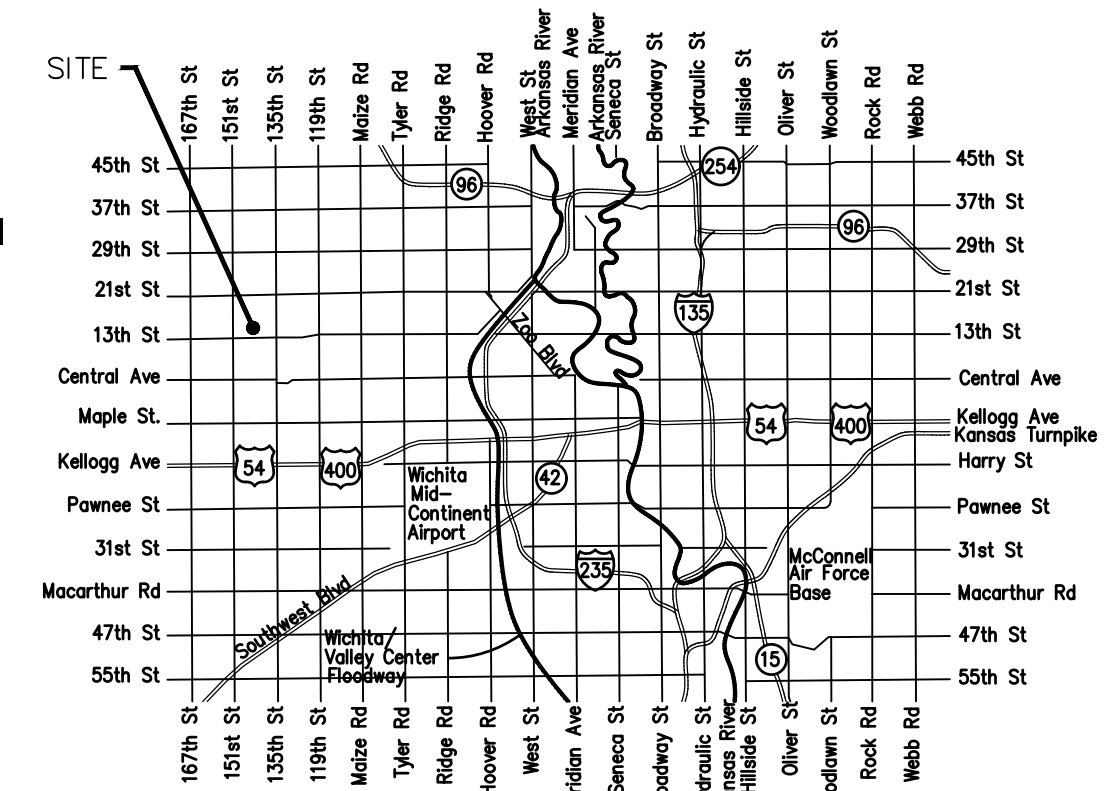
Project Number

468-2020-017095

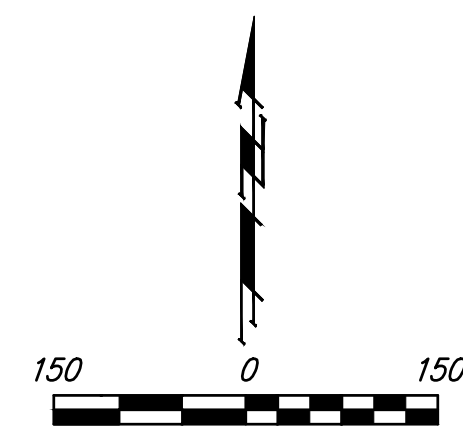
O.C.A. Number

810082

Mies Construction - Contractor  
 B. Woods - City of Wichita, Field Project Engineer  
 S. Stripling - City of Wichita, Inspector  
 Stubs & Risers  
 Release Date: 1/8/2021  
 Completion Date: 11/24/2021  
 pdf: apr 8/25/2021

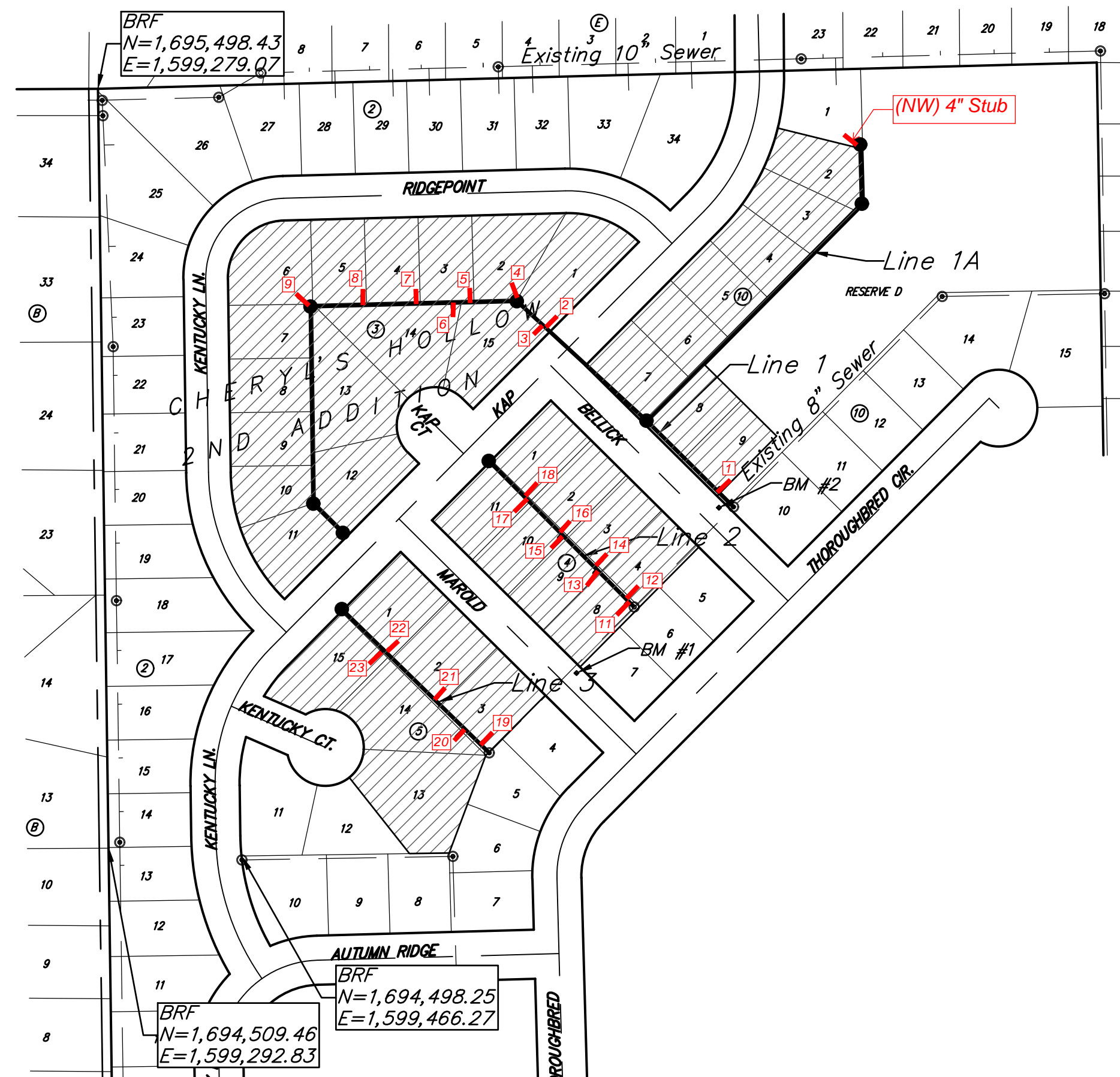


Vicinity Map

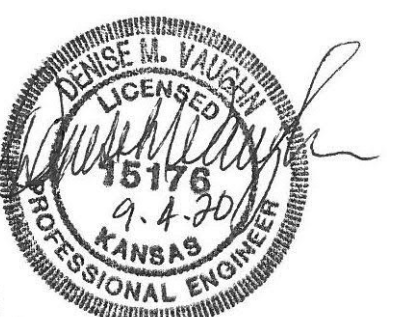
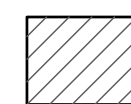


## Sheet Index

Title Sheet	1
Line 1	2-3
Line 1A	4
Lines 2 & 3	5
MH Adjustments	6
Erosion Control Plan	7
Precast SS Manhole Detail	8
Manhole Frame & Cover Detail	9
Vertical Riser Detail	10
Erosion Control BMP Details	11-15
Coordinate Sheet	16
Copy of Plat	17



Benefit District



August 2020



Baughman Company, P.A. 315 Ellis St. Wichita, KS 67211 P 316-262-7271 F 316-262-0143  
 ENGINEERING | SURVEYING | PLANNING | LANDSCAPE ARCHITECTURE

E:\Projects\Cheryl's Hollow 2nd Addition\Engineering\Phase 3&4\SS 19-09-E357\SS.dwg



**BENCHMARKS:**

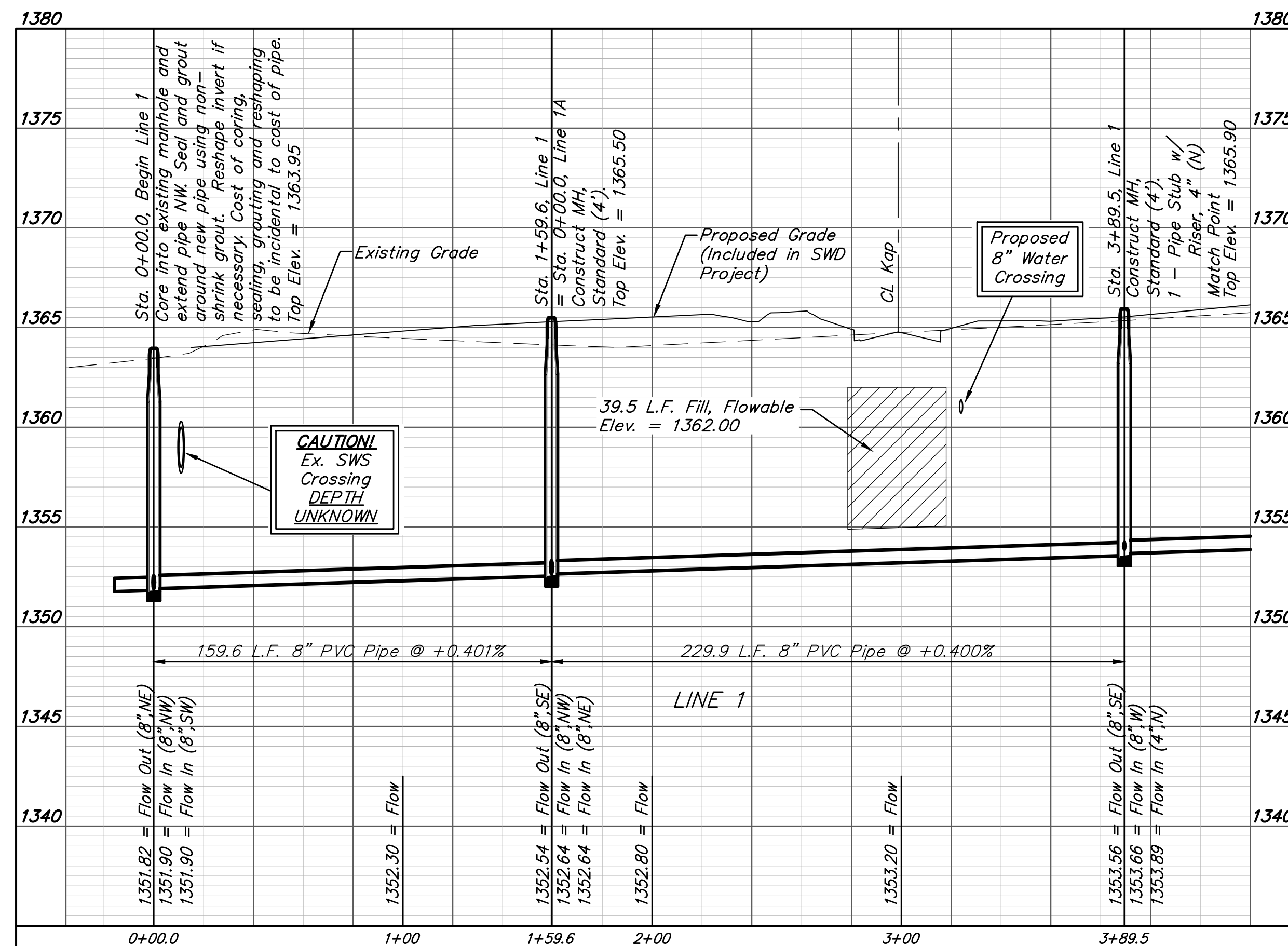
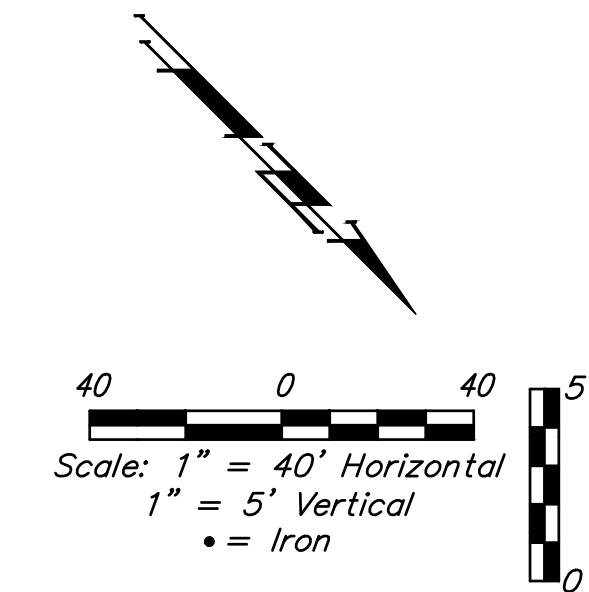
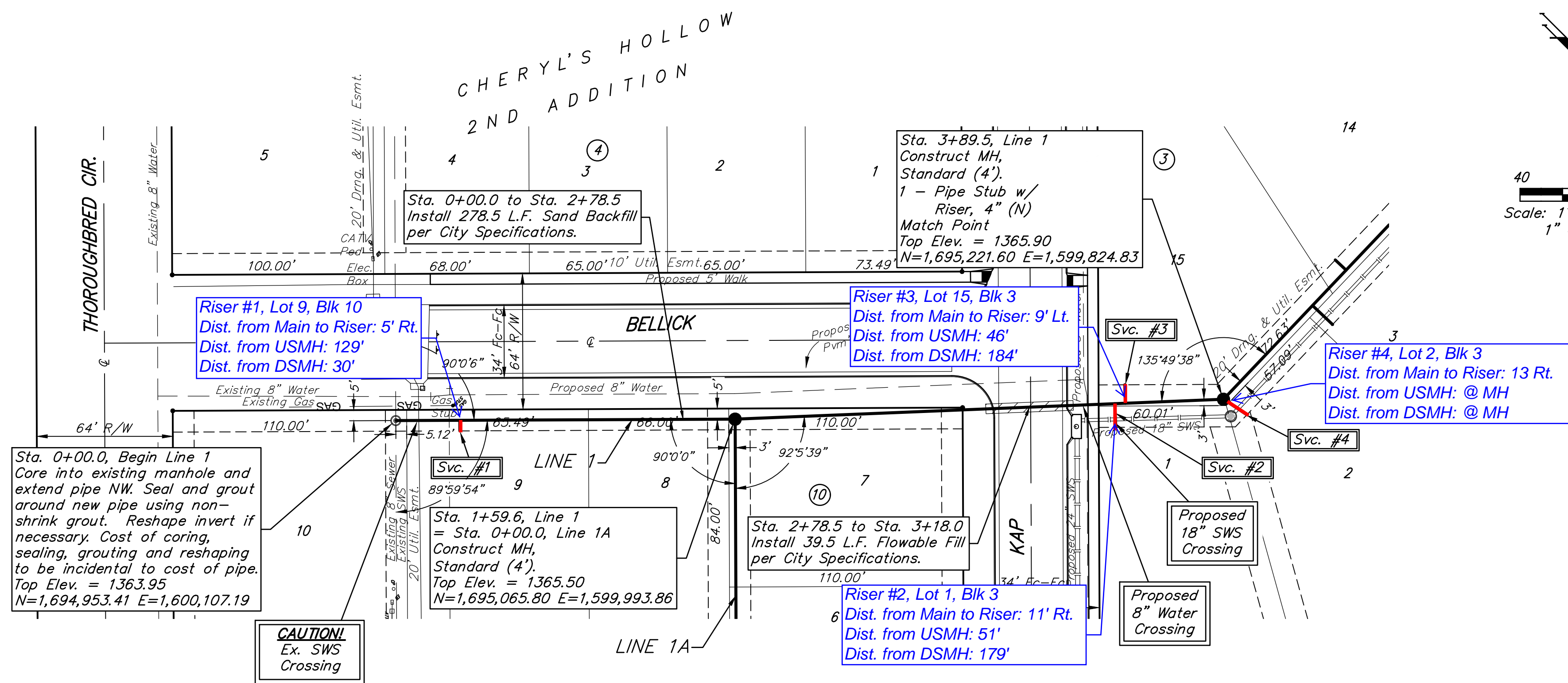
BM #1: "□" with cross on curb inlet near the SE corner of Lot 8, Block 4, Cheryl's Hollow 2nd Addition.  
Elev. = 1364.97 (NAVD 88).

BM #2: "□" with cross on curb inlet near the SE corner of Lot 9, Block 10, Cheryl's Hollow 2nd Addition.  
Elev. = 1363.50 (NAVD 88).

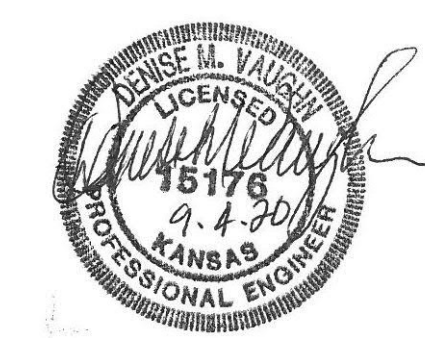
**SEWER SERVICE TABLE**

NUMBER	TYPE	LOCATION			STATION DIRECTION	FOR INFORMATION ONLY	
		LOT NO.	BLOCK NO.	LINE NO.		APPROXIMATE LENGTH 4" PIPE	VERTICAL
1	8" X 4" Tee W/Riser	9	10	1	0+30.1/Rt.	8.0'	5.0'
2	8" X 4" Tee W/Riser	1	3	1	3+38.3/Rt.	8.0'	11.1'
3	8" X 4" Tee W/Riser	15	3	1	3+43.3/Lt.	8.0'	8.7'
4	4" Stub W/Riser	2	3	1	3+89.5/Rt.	8.0'	13.2'

NOTE: Vertical Riser Pipe shall be extended to 2' minimum above ground water elevation and 4' maximum below proposed ground elevation.



Contractor shall verify depth & location of existing manhole prior to construction and notify Engineer of any discrepancy.



**BENCHMARKS:**

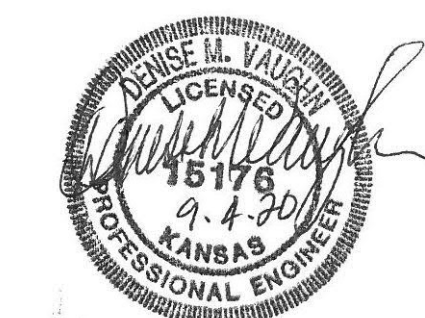
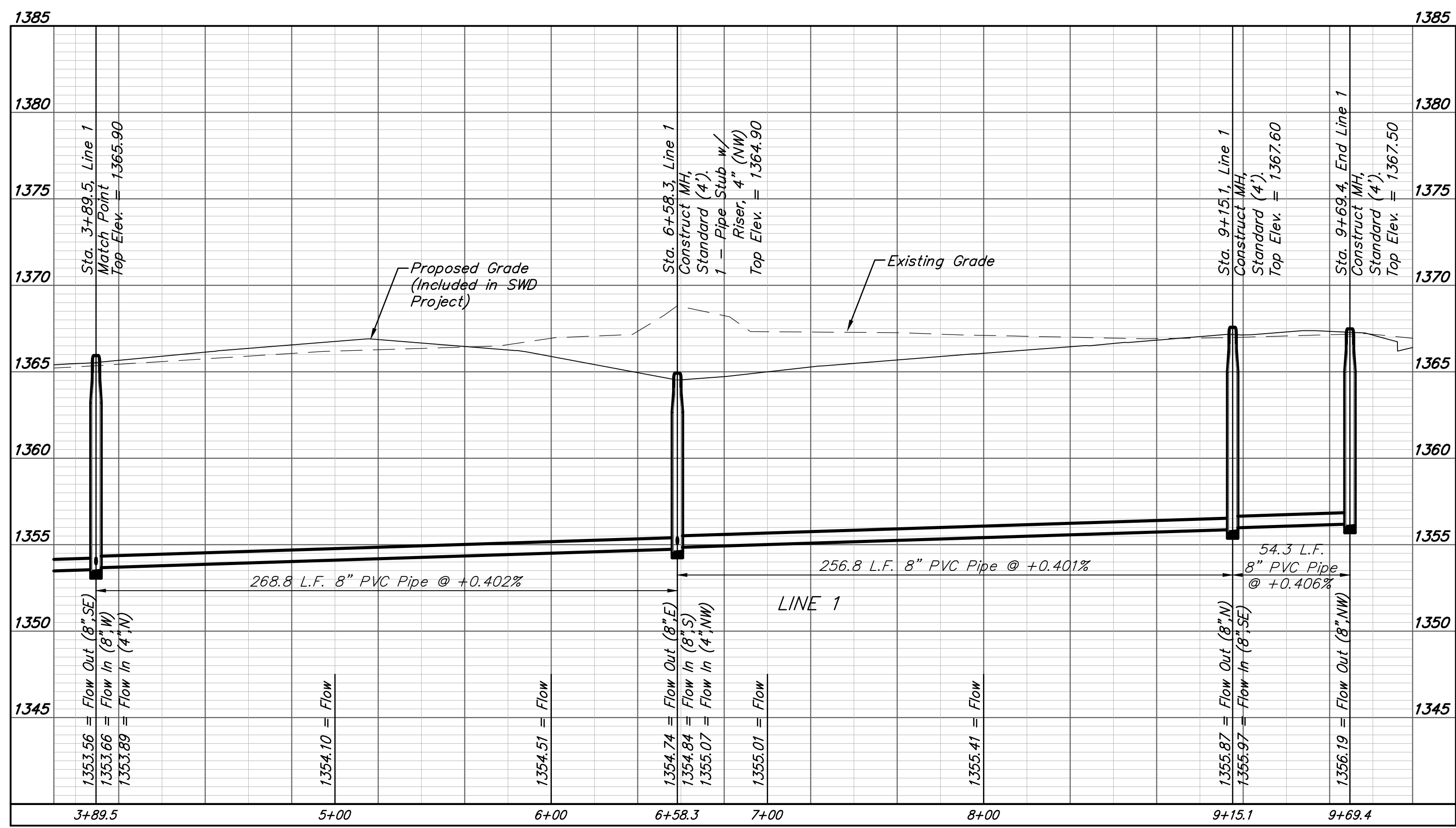
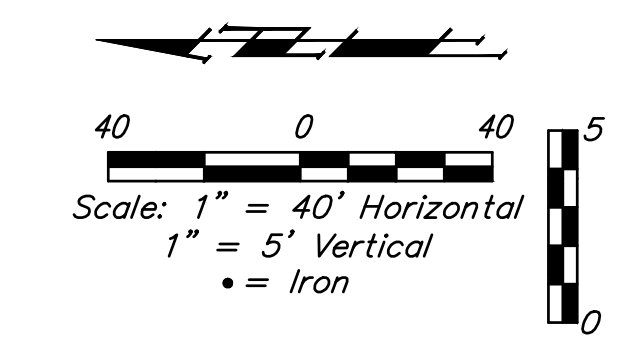
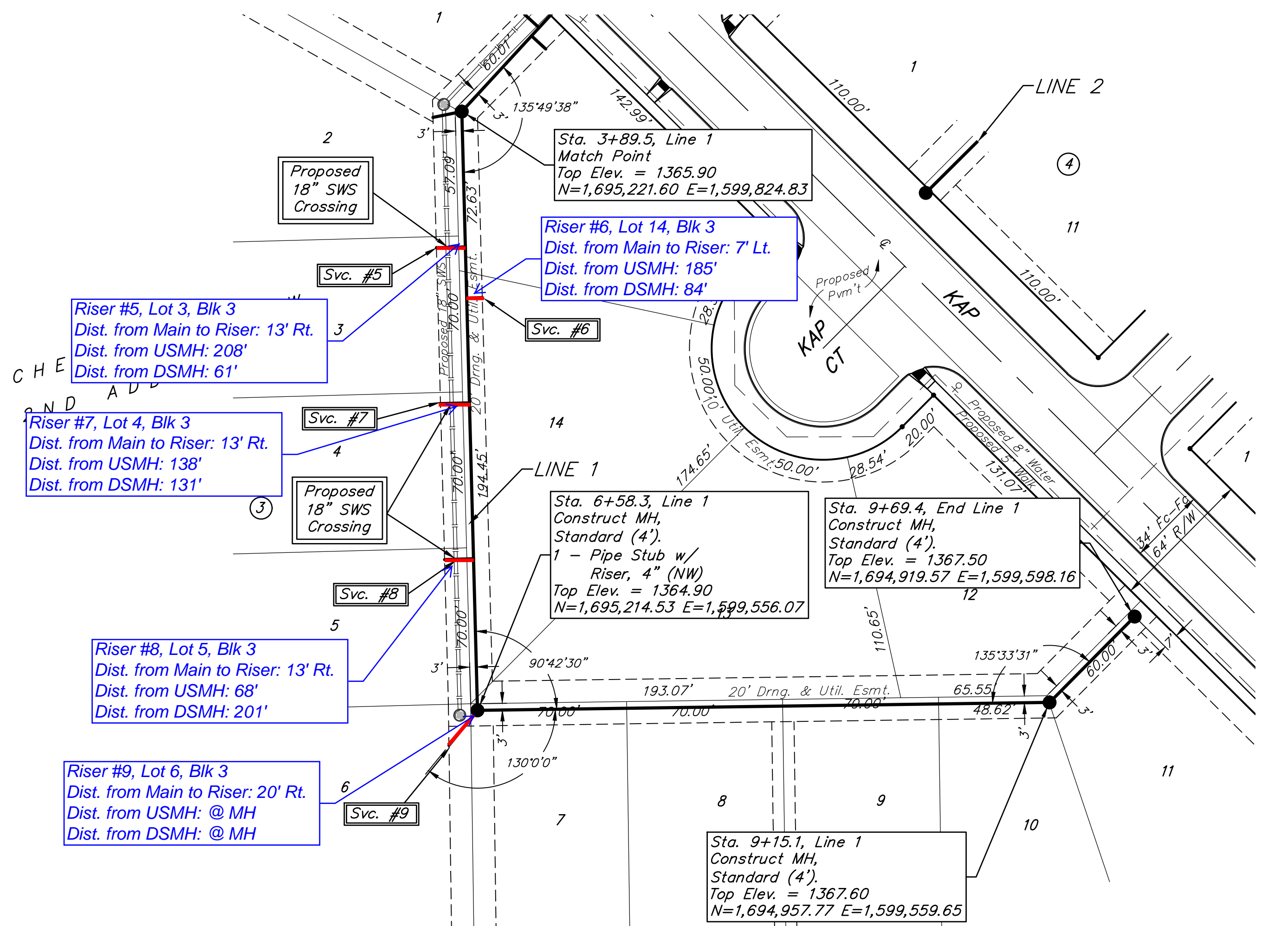
BM #1: "□" with cross on curb inlet near the SE corner of Lot 8, Block 4, Cheryl's Hollow 2nd Addition.  
Elev. = 1364.97 (NAVD 88).

BM #2: "□" with cross on curb inlet near the SE corner of Lot 9, Block 10, Cheryl's Hollow 2nd Addition.  
Elev. = 1363.50 (NAVD 88).

**SEWER SERVICE TABLE**

NUMBER	TYPE	LOCATION			FOR INFORMATION ONLY	
		LOT NO.	BLOCK NO.	LINE NO.	STATION \ DIRECTION	APPROXIMATE LENGTH 4" PIPE
5	8" X 4" Tee W/Riser	3	3	1	4+50.3/Rt.	8.5' 13.0'
6	8" X 4" Tee W/Riser	14	3	1	4+73.3/Lt.	8.5' 7.0'
7	8" X 4" Tee W/Riser	4	3	1	5+20.3/Rt.	8.5' 13.0'
8	8" X 4" Tee W/Riser	5	3	1	5+90.3/Rt.	8.0' 13.0'
9	4" Stub W/Riser	6	3	1	6+58.3/Rt.	6.0' 20.3'

NOTE: Vertical Riser Pipe shall be extended to 2' minimum above ground water elevation and 4' maximum below proposed ground elevation.



**BENCHMARKS:**

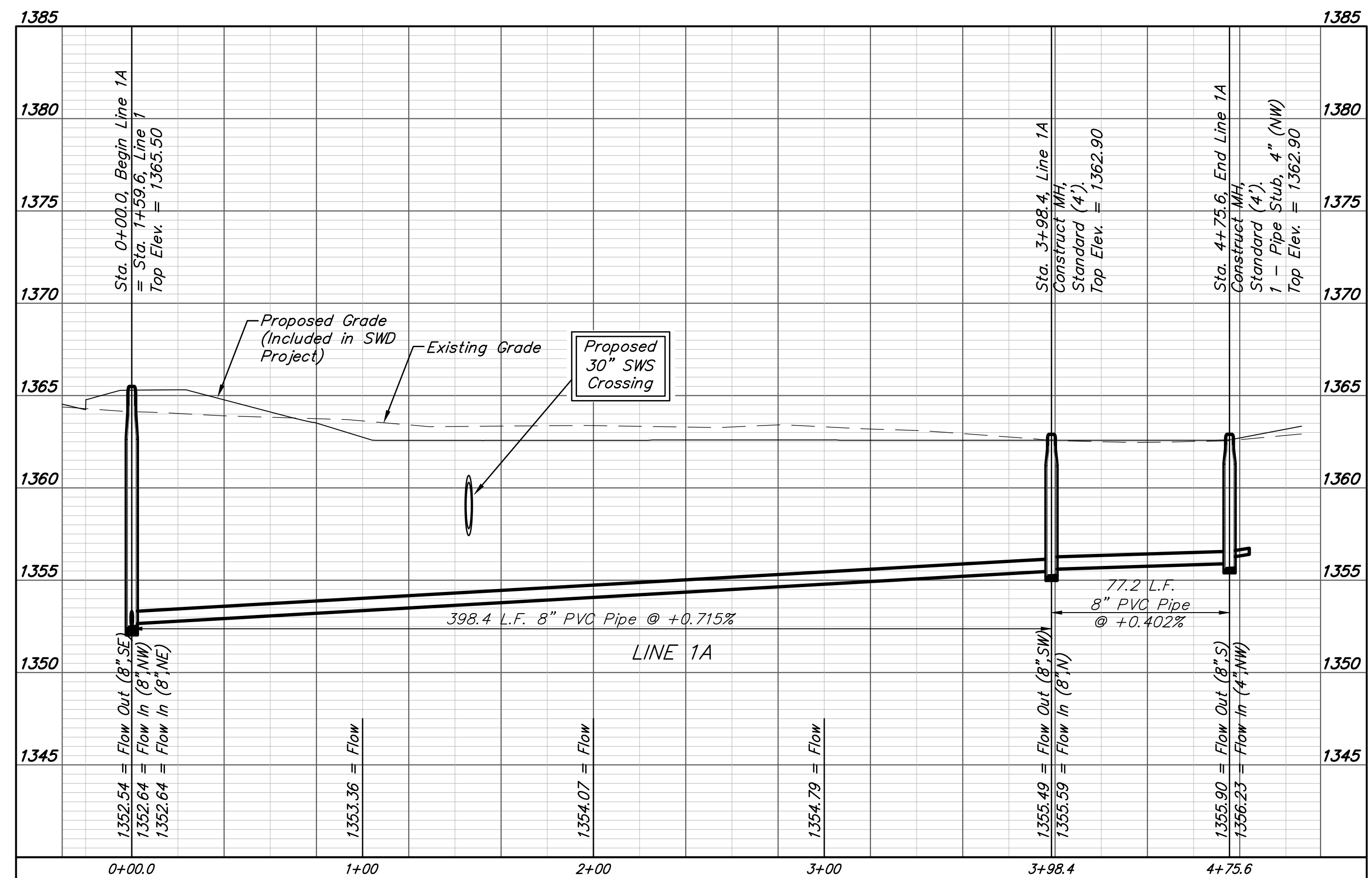
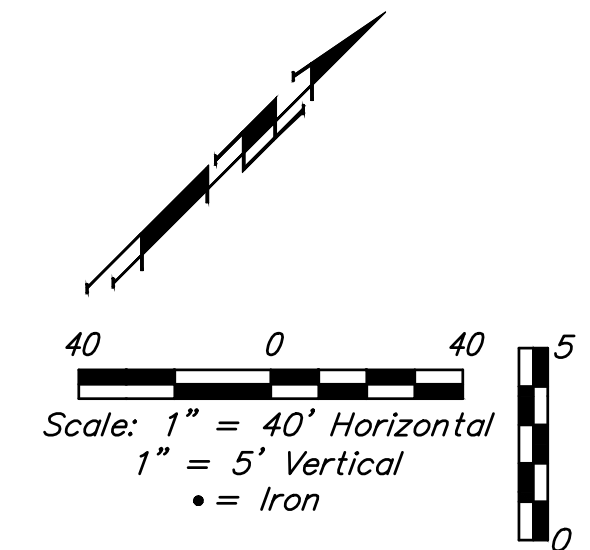
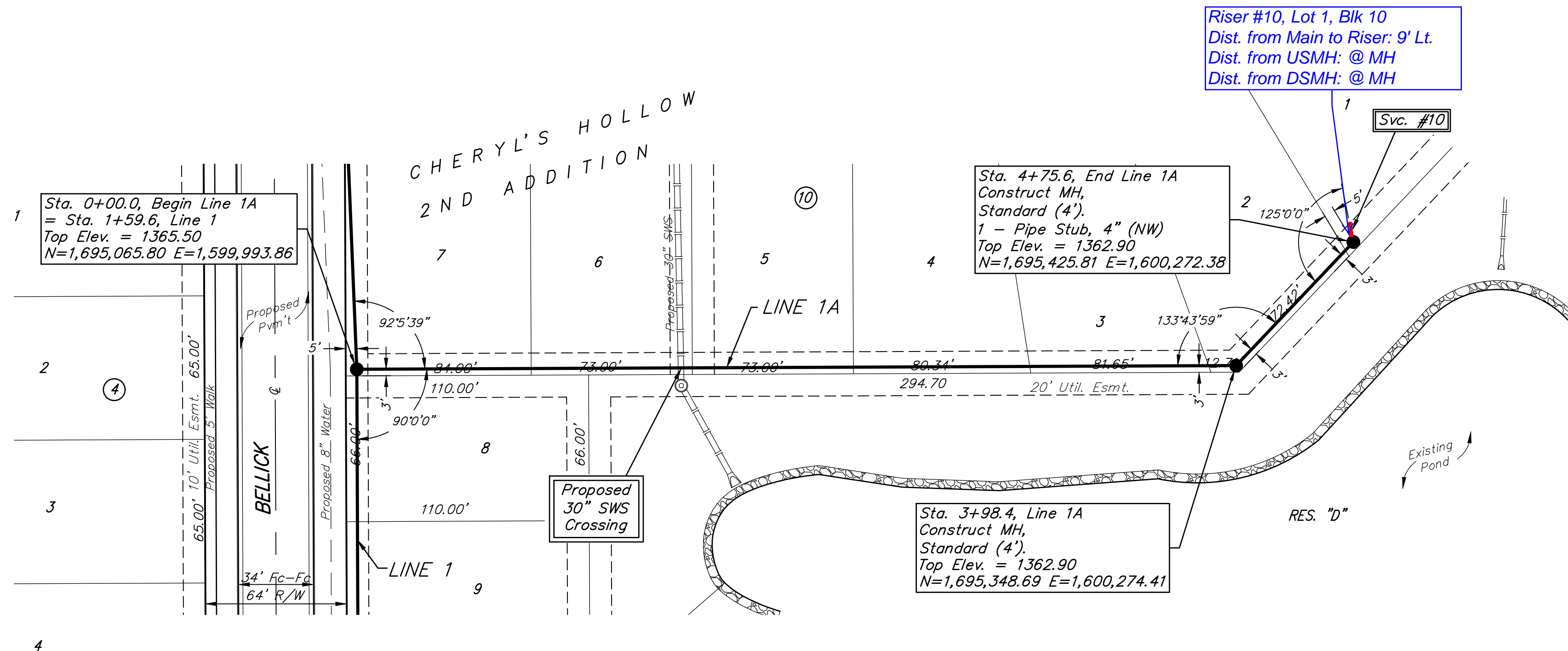
BM #1: "□" with cross on curb inlet near the SE corner of Lot 8, Block 4, Cheryl's Hollow 2nd Addition.  
Elev. = 1364.97 (NAVD 88).

BM #2: "□" with cross on curb inlet near the SE corner of Lot 9, Block 10, Cheryl's Hollow 2nd Addition.  
Elev. = 1363.50 (NAVD 88).

**SEWER SERVICE TABLE**

NUMBER	TYPE	LOCATION			FOR INFORMATION ONLY	
		LOT NO.	BLOCK NO.	LINE NO.	STATION \ DIRECTION	APPROXIMATE LENGTH 4" PIPE
10	4" Stub	1	10	1A	4+75.6/Lt.	VERTICAL: - HORIZONTAL: 8.6'

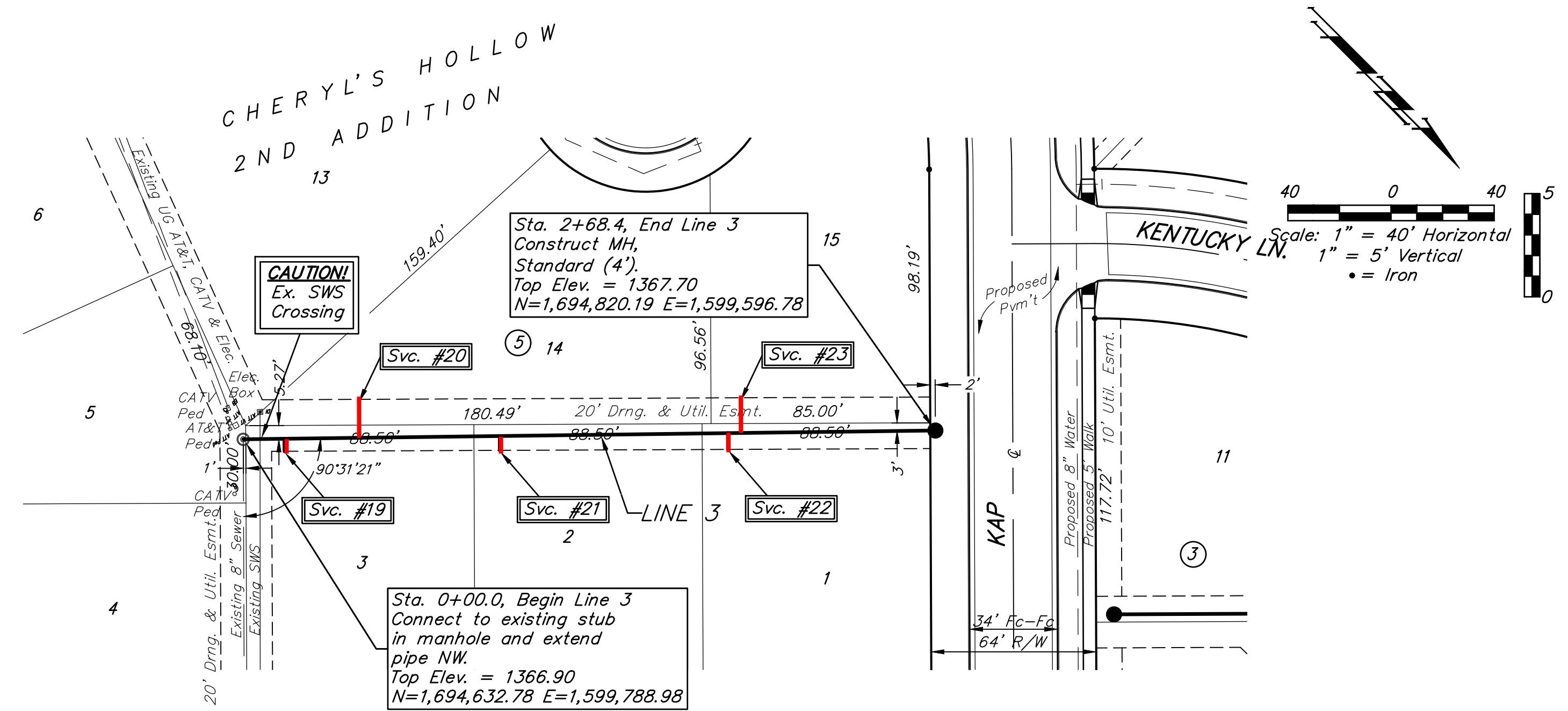
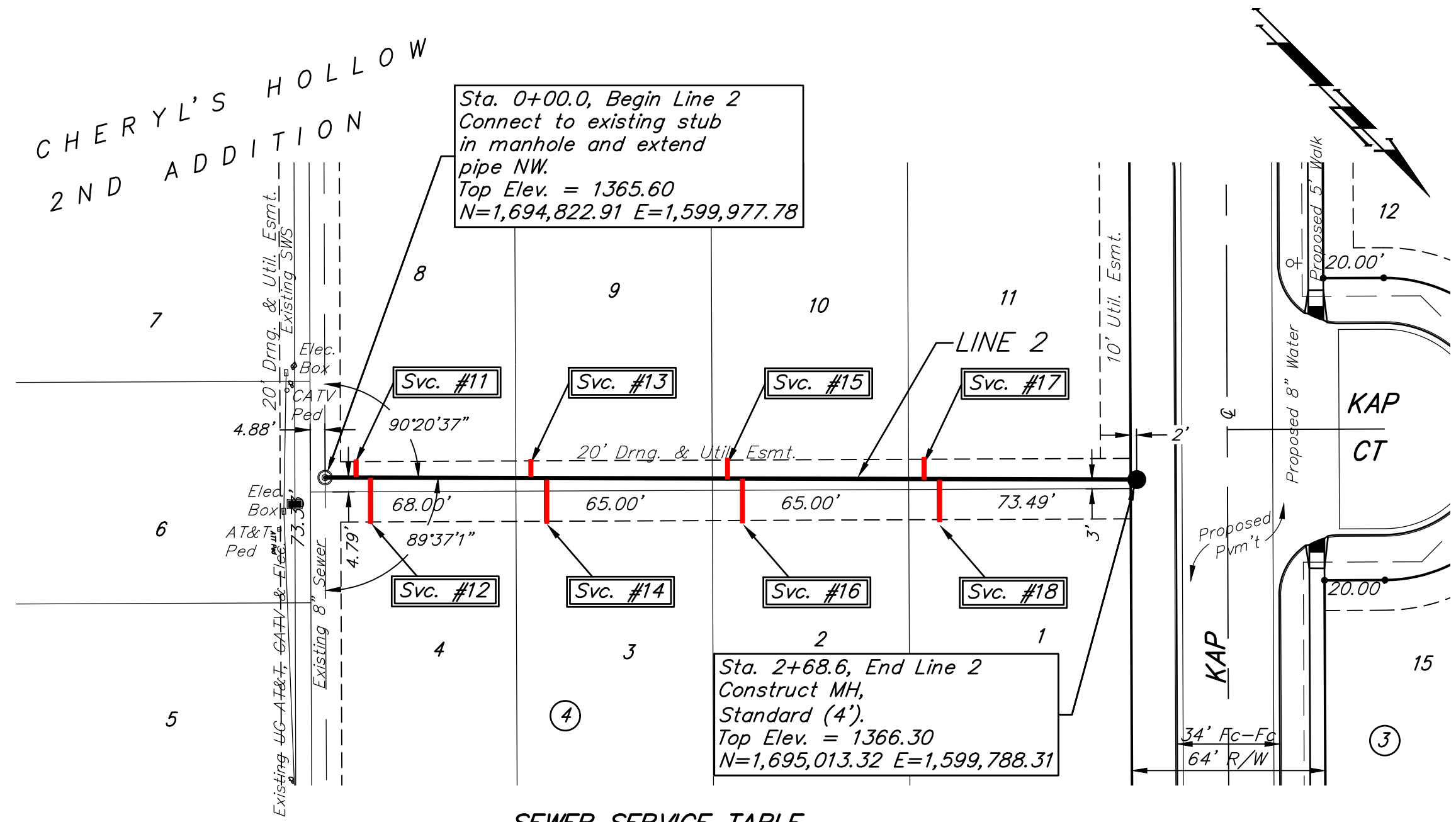
NOTE: Vertical Riser Pipe shall be extended to 2' minimum above ground water elevation and 4' maximum below proposed ground elevation.



**BENCHMARKS:**

BM #1: "□" with cross on curb inlet near the SE corner of Lot 8, Block 4, Cheryl's Hollow 2nd Addition.  
Elev. = 1364.97 (NAVD 88).

BM #2: "□" with cross on curb inlet near the SE corner of Lot 9, Block 10, Cheryl's Hollow 2nd Addition.  
Elev. = 1363.50 (NAVD 88).



SEWER SERVICE TABLE

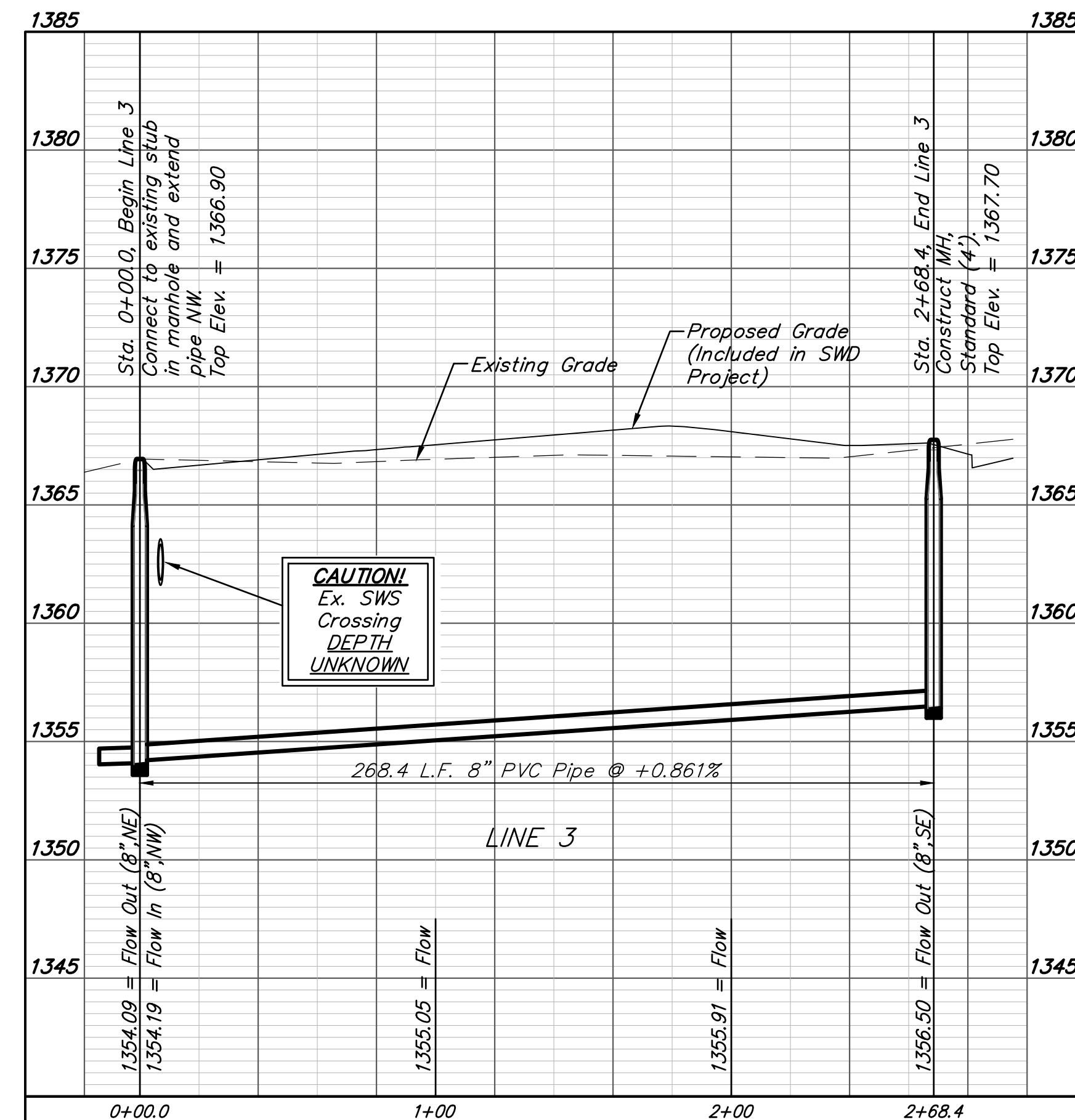
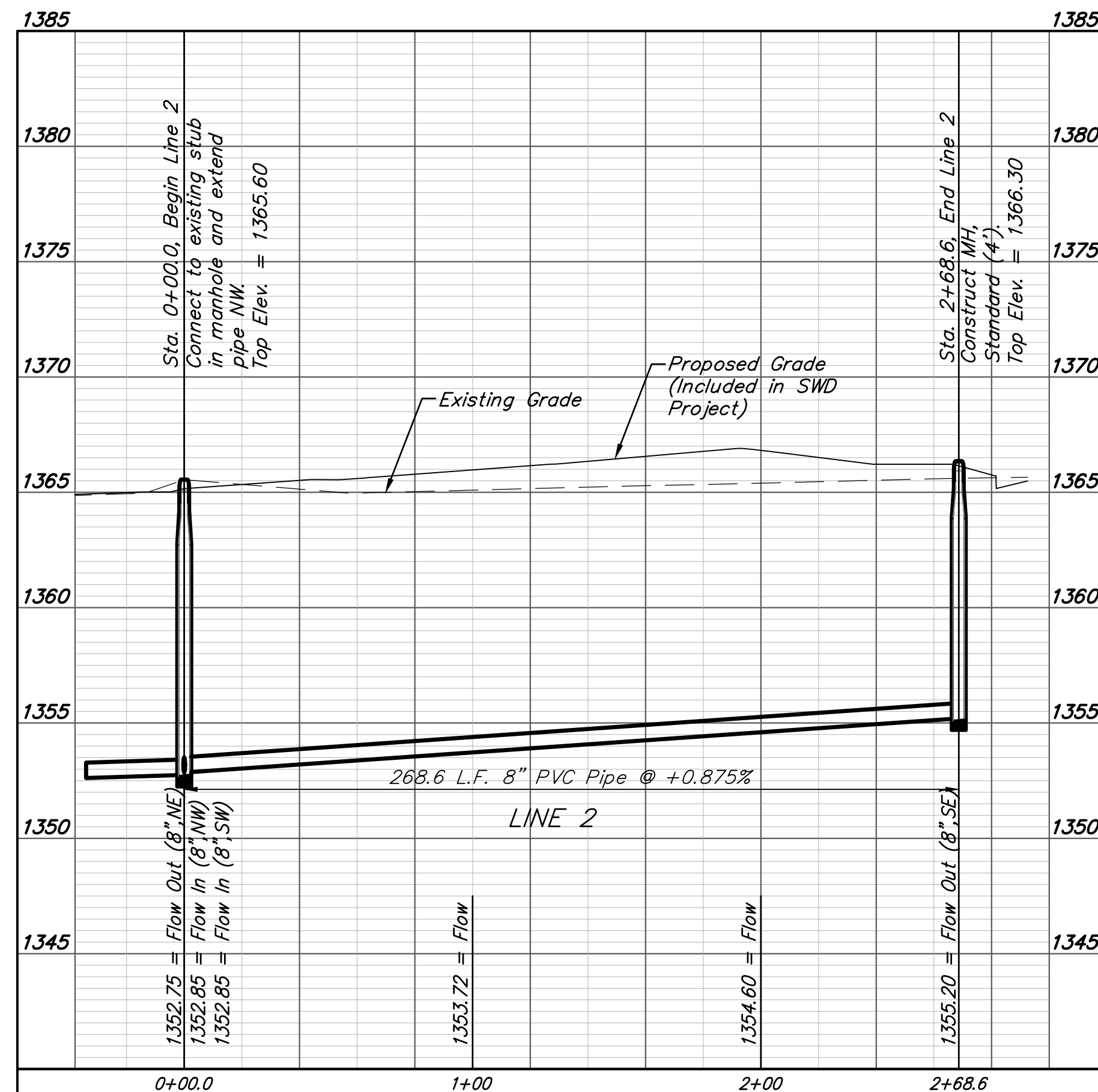
NUMBER	TYPE	LOCATION			FOR INFORMATION ONLY		Distance from Main to Riser (Lt./Rt.)	Distance from		
		LOT NO.	BLOCK NO.	LINE NO.	APPROXIMATE LENGTH 4" PIPE			Upstream MH	Downstream MH	
					VERTICAL	HORIZONTAL				
11	8" X 4" Tee W/Riser	8	4	2	0+10.1/Lt.	8.5'	5.3'	5' Lt.	258.5'	10'
12	8" X 4" Tee W/Riser	4	4	2	0+15.1/Rt.	8.5'	14.7'	15' Rt.	253.5'	15'
13	8" X 4" Tee W/Riser	9	4	2	0+68.1/Lt.	8.5'	5.7'	6' Lt.	200.5'	68'
14	8" X 4" Tee W/Riser	3	4	2	0+73.1/Rt.	8.5'	14.3'	14' Rt.	195.5'	73'
15	8" X 4" Tee W/Riser	10	4	2	1+33.1/Lt.	8.5'	6.3'	6' Lt.	135.5'	133'
16	8" X 4" Tee W/Riser	2	4	2	1+38.1/Rt.	8.5'	13.9'	14' Rt.	130.5'	138'
17	8" X 4" Tee W/Riser	11	4	2	1+98.1/Lt.	8.5'	6.6'	7' Lt.	70.5'	198'
18	8" X 4" Tee W/Riser	1	4	2	2+03.1/Rt.	8.5'	13.4'	13' Rt.	65.5'	203'

NOTE: Vertical Riser Pipe shall be extended to 2' minimum above ground water elevation and 4' maximum below proposed ground elevation.

SEWER SERVICE TABLE

NUMBER	TYPE	LOCATION			FOR INFORMATION ONLY		Distance from Main to Riser (Lt./Rt.)	Distance from		
		LOT NO.	BLOCK NO.	LINE NO.	APPROXIMATE LENGTH 4" PIPE			Upstream MH	Downstream MH	
					VERTICAL	HORIZONTAL				
19	8" X 4" Tee W/Riser	3	5	3	0+16.0/Rt.	8.5'	4.9'	5' Rt.	252'	16'
20	8" X 4" Tee W/Riser	14	5	3	0+45.0/Lt.	8.5'	14.9'	15' Lt.	223'	45'
21	8" X 4" Tee W/Riser	2	5	3	0+99.5/Rt.	8.5'	5.6'	6' Rt.	169'	99'
22	8" X 4" Tee W/Riser	1	5	3	1+88.0/Rt.	8.5'	6.3'	6' Rt.	80'	188'
23	8" X 4" Tee W/Riser	15	5	3	1+93.0/Lt.	8.5'	13.7'	14' Lt.	75'	193'

NOTE: Vertical Riser Pipe shall be extended to 2' minimum above ground water elevation and 4' maximum below proposed ground elevation.



**BENCHMARKS:**

BM #1: "□" with cross on curb inlet near the SE corner of Lot 8, Block 4, Cheryl's Hollow 2nd Addition.  
Elev. = 1364.97 (NAVD 88).

BM #2: "□" with cross on curb inlet near the SE corner of Lot 9, Block 10, Cheryl's Hollow 2nd Addition.  
Elev. = 1363.50 (NAVD 88).

