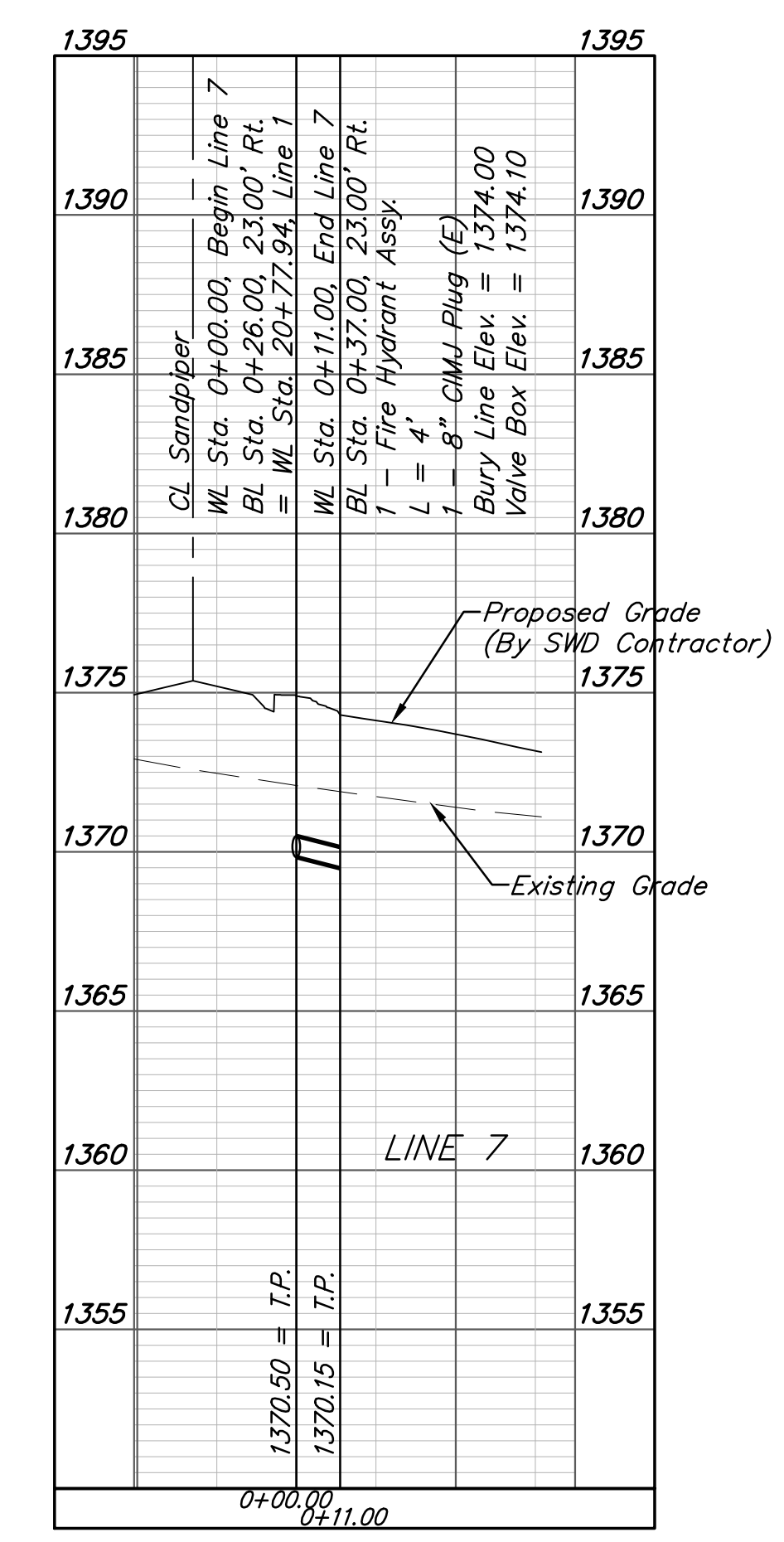
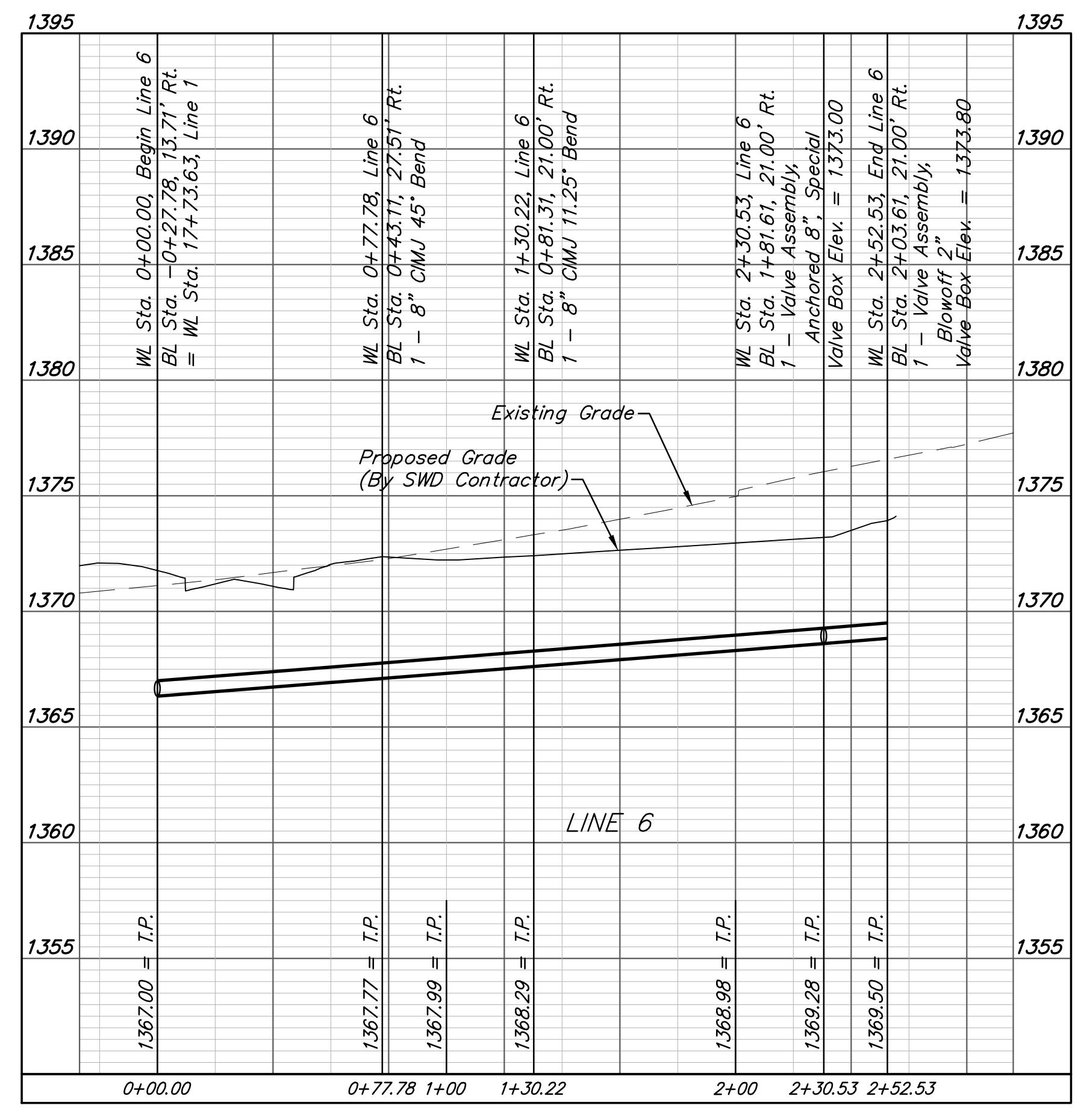
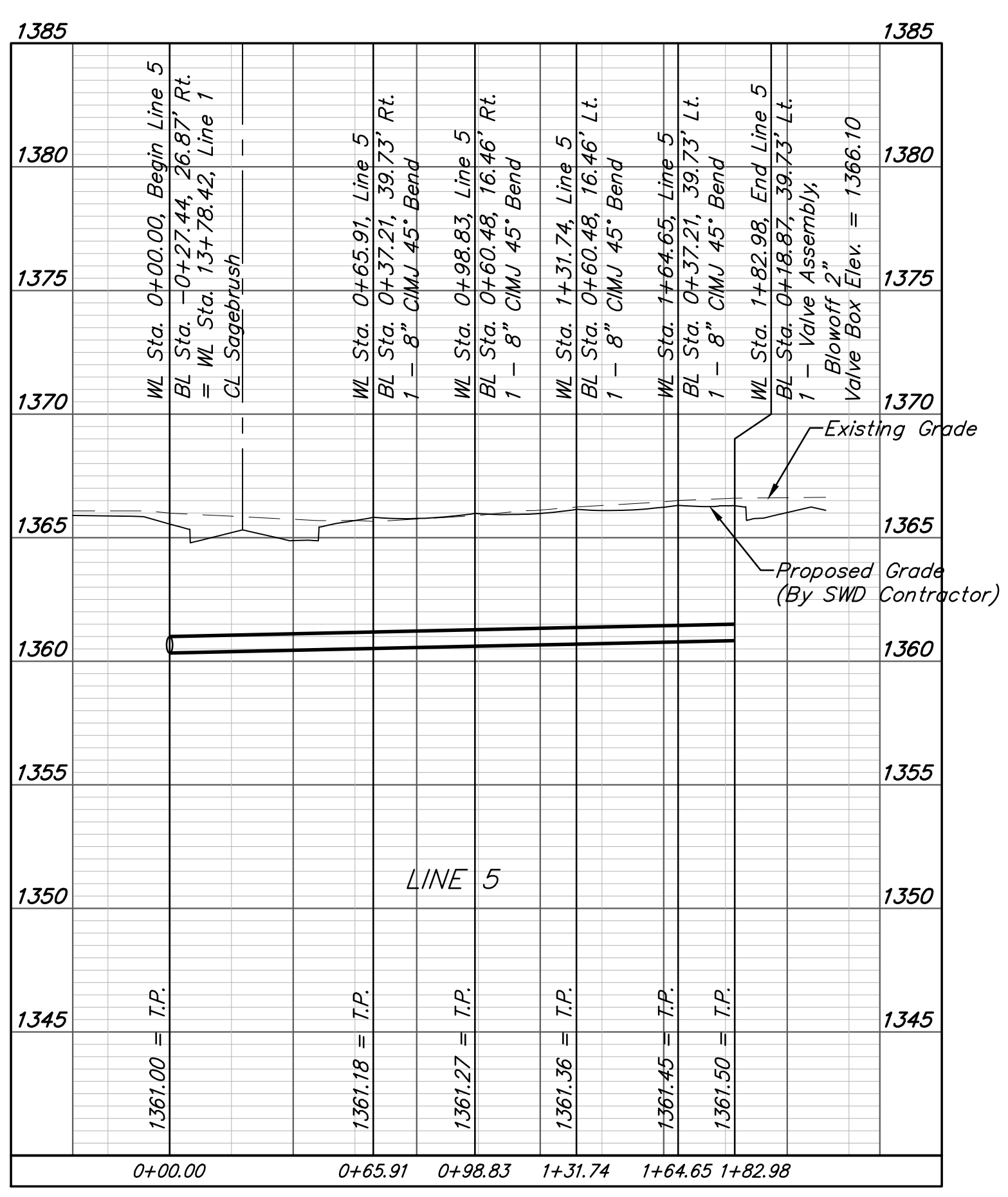
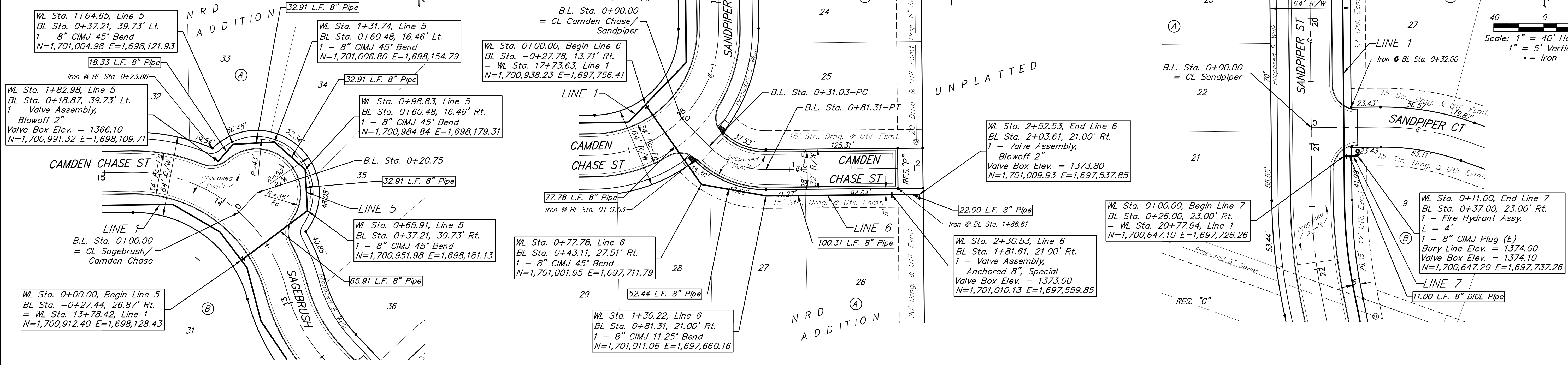


**BENCHMARKS:**  
 BM #1: Chiseled square on NW corner of catch basin, 262.2' W. & 35.9' N. of S1/4 Cor., Sec. 1, TWP. 27-S., R-2-E.  
 Elev. = 1361.76 NAVD88

BM #2: Chiseled square on NW corner of catch basin, 962.0' W. & 35.8' N. of S1/4 Cor., Sec. 1, TWP. 27-S., R-2-E.  
 Elev. = 1363.84 NAVD88

BM #3: Chiseled square on NW corner of catch basin, 160.0' E. & 24.3' S. of SW Cor., Lot 13, Block A, NRD Addition.  
 Elev. = 1369.05 NAVD88



**BAUGHMAN COMPANY**  
 315 Ellis St.  
 Wichita, KS 67211  
 316-262-7271  
 BaughmanCo.com

NRD ADDITION  
 Phase I & Entrance

**LINES 5,6 & 7**

WATER DISTRIBUTION SYSTEM

PROJECT NUMBER:  
 21-03-E865 & E870

DESIGN: NBW DRAWN: TMS  
 DATE: July 29, 2021

SHEET **10** OF **22**

File: E:\Projects\NRD Addition\_19-04-P448\Engineering\Phase I\WTR 21-03-E865 EB70\WTR.dwg