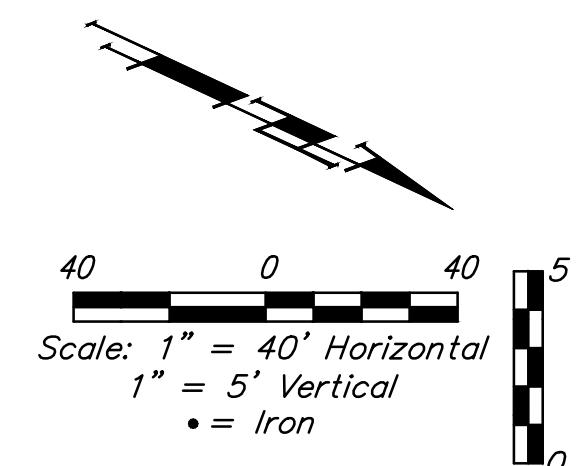
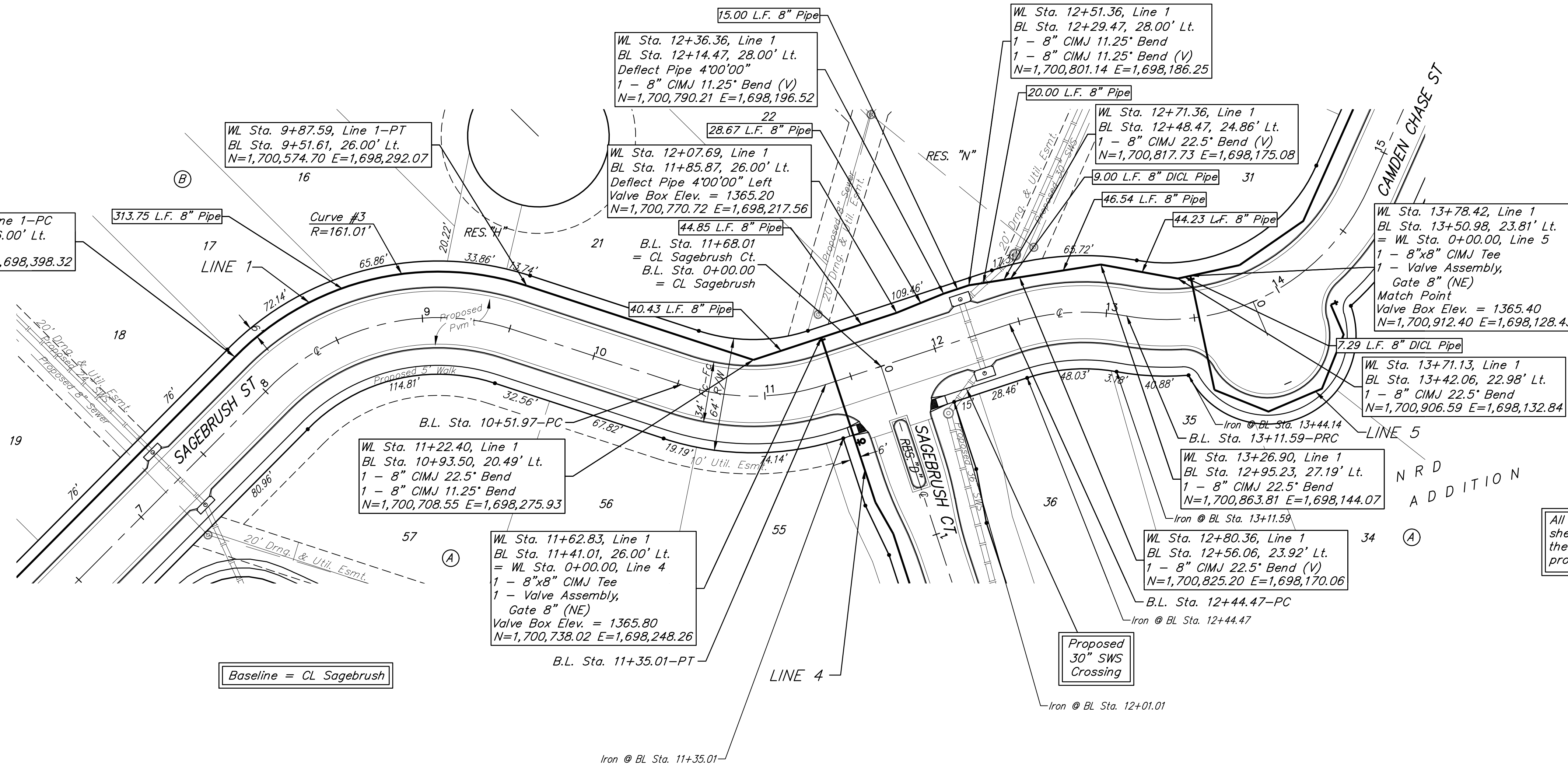


BENCHMARKS:
 BM #1: Chiseled square on NW corner of catch basin, 262.2' W. & 35.9' N. of S1/4 Cor., Sec. 1, TWP. 27-S, R-2-E.
 Elev. = 1361.76 NAVD88

BM #2: Chiseled square on NW corner of catch basin, 962.0' W. & 35.8' N. of S1/4 Cor., Sec. 1, TWP. 27-S, R-2-E.
 Elev. = 1363.84 NAVD88

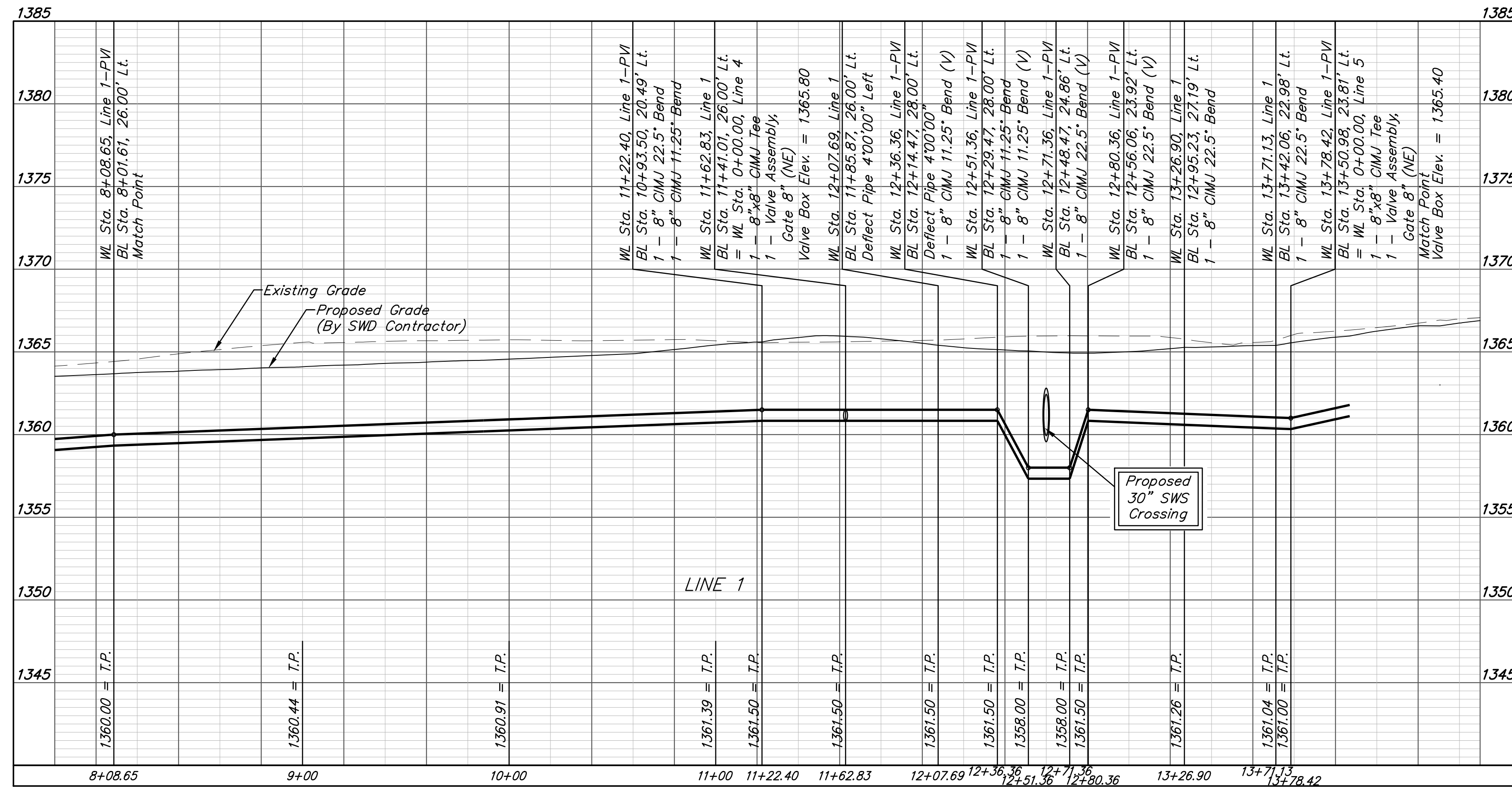
BM #3: Chiseled square on NW corner of catch basin, 160.0' E. & 24.3' S. of SW Cor., Lot 13, Block A, NRD Addition.
 Elev. = 1369.05 NAVD88

Curve #3				
Curve Data Based on Waterline				
Rad. = 161.01' Delta = 63°40'31" Tangent = 99.98'				
Arc = 178.94' L.C. = 169.87' Def./Ft. = 10.67541 Min.				
Chord Lengths	Station	Arc	8' Left	Defl. Total Defl.
	8+08.65	-	-	0°00'00" 0°00'00"
	8+25.00	16.35'	17.15'	2°54'33" 2°54'33"
	8+50.00	25.00'	26.22'	4°26'53" 7°21'26"
	8+75.00	25.00'	26.22'	4°26'53" 11°48'19"
	9+00.00	25.00'	26.22'	4°26'53" 16°15'12"
	9+25.00	25.00'	26.22'	4°26'53" 20°42'05"
	9+50.00	25.00'	26.22'	4°26'53" 25°08'58"
	9+75.00	25.00'	26.22'	4°26'53" 29°35'51"
	9+87.59	12.59'	13.21'	2°14'25" 31°50'16"



All water lines on this sheet are included in the Phase I water line project.

Pipe layout is shown to be circular for radii under 200'. Contractor may use short pipe lengths, high deflection couplers, and manufacturer recommended pipe deflections to meet planned alignment.



BAUGHMAN COMPANY

315 Ellis St.
 Wichita, KS 67211
 316-262-7271
 BaughmanCo.com

NRD ADDITION
 Phase I & Entrance

LINE 1

WATER DISTRIBUTION SYSTEM

PROJECT NUMBER:
 21-03-E865 & E870

DESIGN: NBW DRAWN: TMS

DATE: July 29, 2021

SHEET OF
3 22

File: E:\Projects\NRD Addition_19-04-P448\Engineering\Phase 1\WTR 21-03-E865 EB70\WTR.dwg