

BENCHMARKS:
 BM #1: Chiseled square on NW corner of catch basin, 262.2' W. & 35.9' N. of S1/4 Cor., Sec. 1, TWP. 27-S, R-2-E.
 Elev. = 1361.76 NAVD88

BM #2: Chiseled square on NW corner of catch basin, 962.0' W. & 35.8' N. of S1/4 Cor., Sec. 1, TWP. 27-S, R-2-E.
 Elev. = 1363.84 NAVD88

BM #3: Chiseled square on NW corner of catch basin, 160.0' E. & 24.3' S. of SW Cor., Lot 13, Block A, NRD Addition.
 Elev. = 1369.05 NAVD88

WL Sta. 0+00.00, Begin Line 1
 BL Sta. -0+35.93, 39.00' Lt.
 1 - 30"x8" Tapping Saddle
 1 - 8" Tapping Valve & Valve Box
 1 - 8" CIMJ 45° Bend (V)
 Tapping saddle, tapping valve & valve box to be furnished and installed by the City of Wichita Water Dept. Contractor to set valve box to grade. Valve Box Elev. = 1362.60
 N=1,699,789.65 E=1,698,655.21

Saw cut, remove and replace existing 6" concrete sidewalk as necessary for water line construction.
 B.L. Sta. 0+00.00 = CL 21st St. N.

5.50 L.F. 8" DI CL Pipe
 WL Sta. 0+05.50, Line 1
 BL Sta. -0+30.43, 39.00' Lt.
 1 - 8" CIMJ 45° Bend (V)
 Begin installation of 8" RJPVC by directional drilling.
 N=1,699,795.15 E=1,698,655.12

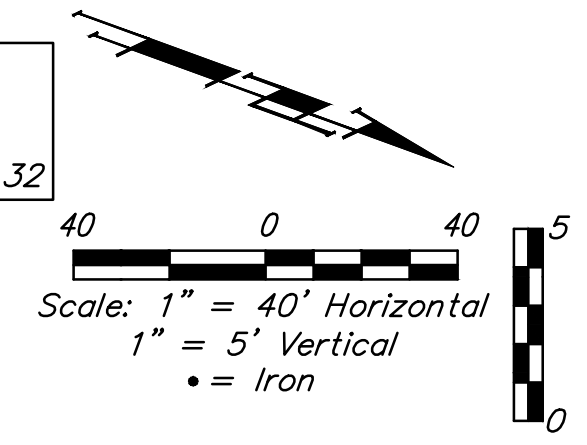
90.50 L.F. 8" RJPVC Pipe
 Iron @ BL Sta. 0+60.00
 WL Sta. 0+96.00, Line 1
 BL Sta. 0+60.07, 39.00' Lt.
 End installation of 8" RJPVC by directional drilling.
 N=1,699,885.64 E=1,698,653.65

198.56 L.F. 8" Pipe
 Iron @ BL Sta. 2+01.22
 WL Sta. 2+72.14, Line 1-PC
 BL Sta. 2+43.06, 34.96' Lt.
 N=1,700,061.76 E=1,698,650.78

WL Sta. 2+94.56, Line 1
 BL Sta. 2+68.22, 30.73' Lt.
 = WL Sta. 0+00.00, Lines 2&3
 1 - 8"x8" CIMJ Cross
 2 - Valve Assemblies, Gate 8" (W&E)
 1 - 8" CIMJ 11.25° Bend (W) (V)
 Valve Box Elev. = 1363.70
 N=1,700,084.12 E=1,698,649.36

8.00 L.F. 8" DI CL Pipe
 WL Sta. 7+47.00, Line 1
 BL Sta. 7+39.96, 26.00' Lt.
 1 - 8" CIMJ 22.5° Bend (V)
 N=1,700,421.33 E=1,698,456.34

WL Sta. 8+08.65, Line 1-PC
 BL Sta. 8+01.61, 26.00' Lt.
 Match Point
 N=1,700,442.16 E=1,698,398.32

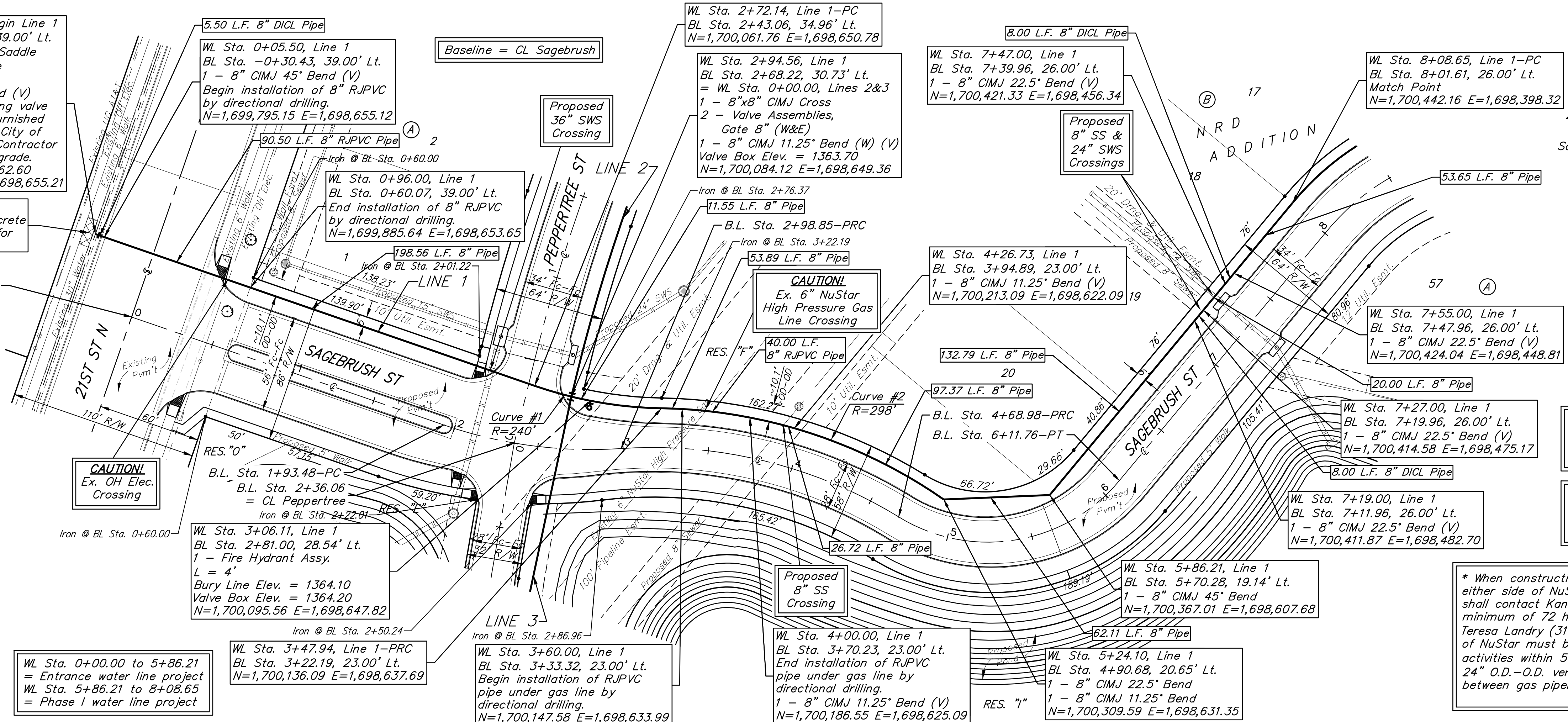


Curve #1
 Curve Data Based on Waterline
 Rad. = 240' Delta = 18°05'39" Tangent = 38.21'
 Arc = 75.80' L.C. = 75.48' Def./Ft. = 7.16128 Min.

| Station | Arc | 8' Left | Defl. | Total Defl. |
|---------|--------|---------|----------|-------------|
| 2+72.14 | - | - | 0°00'00" | 0°00'00" |
| 2+94.56 | 22.42' | 21.66' | 2°40'33" | 2°40'33" |
| 3+00.00 | 5.44' | 5.26' | 0°38'58" | 3°19'31" |
| 3+06.11 | 6.11' | 5.91' | 0°43'45" | 4°03'16" |
| 3+25.00 | 18.89' | 18.25' | 2°15'17" | 6°18'33" |
| 3+47.94 | 22.94' | 22.16' | 2°44'16" | 9°02'49" |

Curve #2
 Curve Data Based on Waterline
 Rad. = 298' Delta = 33°52'17" Tangent = 90.74'
 Arc = 176.16' L.C. = 173.61' Def./Ft. = 5.76829 Min.

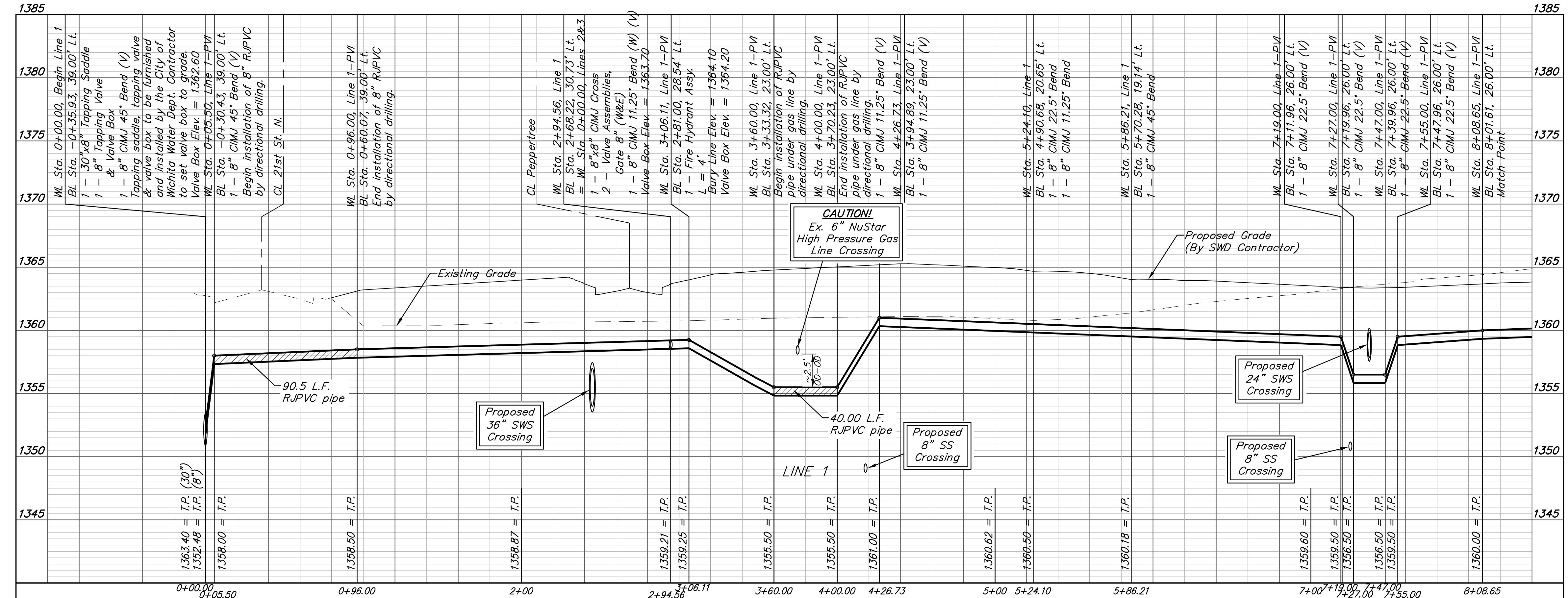
| Station | Arc | 8' Left | Defl. | Total Defl. |
|---------|--------|---------|----------|-------------|
| 3+47.94 | - | - | 0°00'00" | 0°00'00" |
| 3+50.00 | 2.06' | 2.12' | 0°11'53" | 0°11'53" |
| 3+75.00 | 25.00' | 25.66' | 2°24'12" | 2°36'05" |
| 4+00.00 | 25.00' | 25.66' | 2°24'12" | 5°00'18" |
| 4+25.00 | 25.00' | 25.66' | 2°24'12" | 7°24'30" |
| 4+26.73 | 1.73' | 1.78' | 0°09'59" | 7°34'29" |
| 4+50.00 | 23.27' | 23.89' | 2°14'14" | 9°48'43" |
| 5+00.00 | 50.00' | 51.28' | 4°48'25" | 14°37'08" |
| 5+24.10 | 24.10' | 24.74' | 2°19'00" | 16°56'08" |



Contractor to maintain a minimum of 10' of horizontal separation (O.D.-O.D.) between sanitary sewer and water line.

Contractor to maintain a minimum of 2' of vertical separation (O.D.-O.D.) between sanitary sewer and water line.

* When construction will occur within 50' of either side of NuStar gas pipeline, Contractor shall contact Kansas One-Call and NuStar a minimum of 72 hours prior to construction. Teresa Landry (316)322-0325. A representative of NuStar must be present for any construction activities within 50' of pipeline. A minimum of 24" O.D.-O.D. vertical separation is required between gas pipeline and proposed utilities.



DEPTH UNKNOWN
 Contractor to Verify Depth & Location of Existing Water Line Prior to Construction.



BAUGHMAN COMPANY
 315 Ellis St.
 Wichita, KS 67211
 316-262-7271
 BaughmanCo.com

NRD ADDITION
 Phase I & Entrance

LINE 1

WATER DISTRIBUTION SYSTEM

PROJECT NUMBER:
 21-03-E865 & E870

DESIGN: NBW DRAWN: TMS

DATE: July 29, 2021

SHEET **2** OF **22**

File: E:\Projects\NRD Addition_19-04-P448\Engineering\Phase 1\WTR 21-03-E865 EB70\WTR.dwg