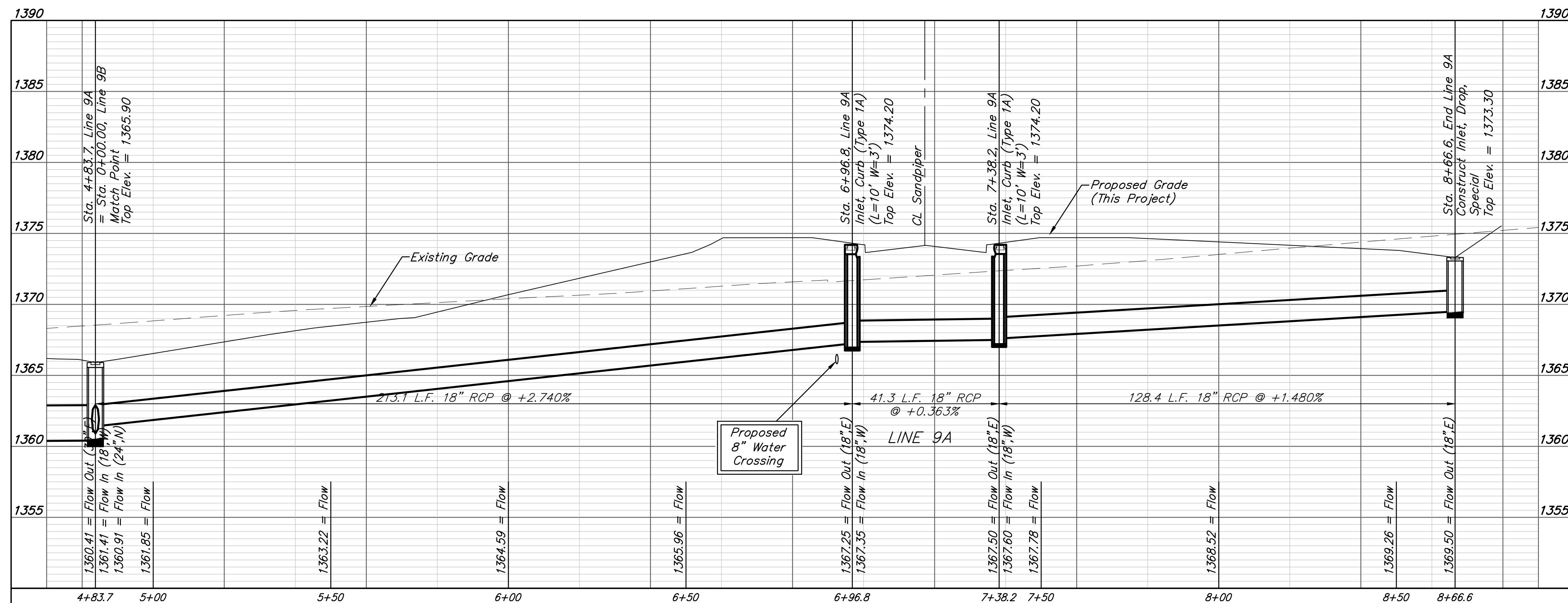
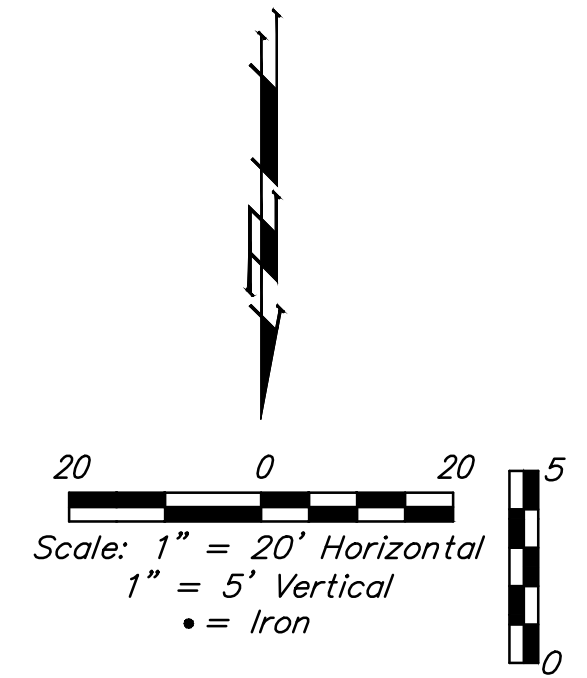
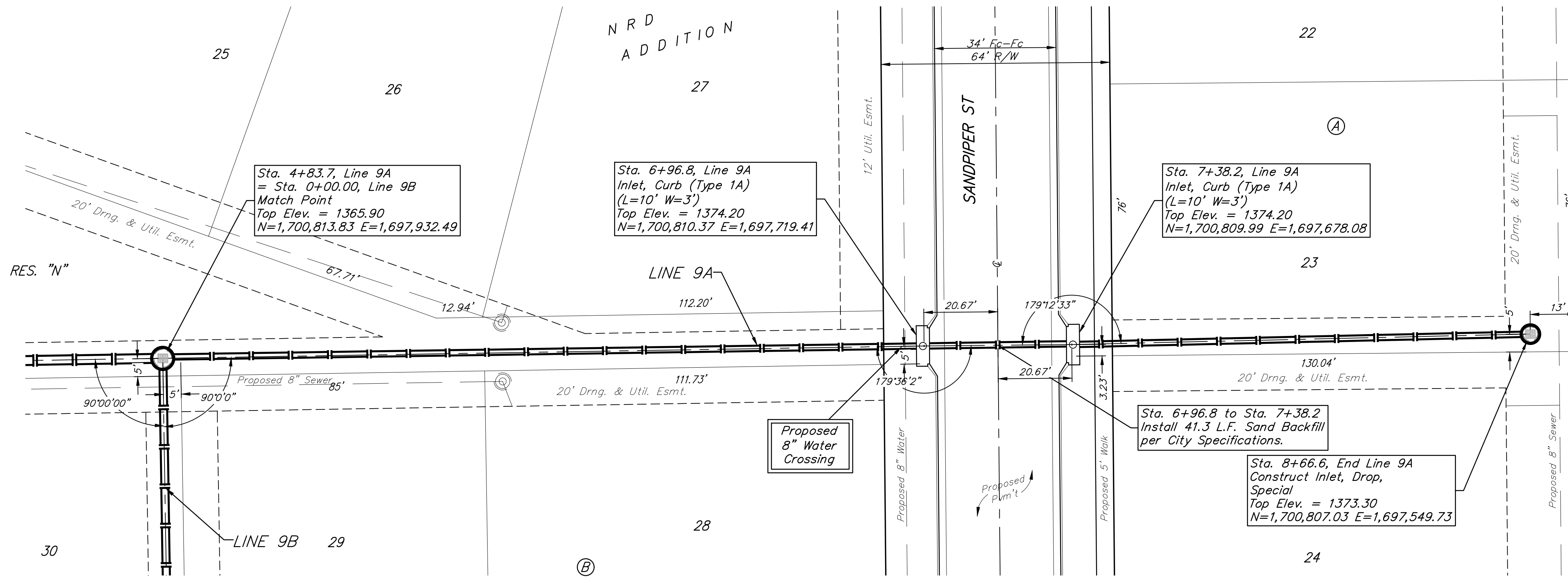


BENCHMARKS:
 BM #1: Chiseled square on NW corner of catch basin, 262.2' W. & 35.9' N. of S1/4 Cor., Sec. 1, TWP. 27-S., R-2-E.
 Elev. = 1361.76 NAVD88

BM #2: Chiseled square on NW corner of catch basin, 962.0' W. & 35.8' N. of S1/4 Cor., Sec. 1, TWP. 27-S., R-2-E.
 Elev. = 1363.84 NAVD88

BM #3: Chiseled square on NW corner of catch basin, 160.0' E. & 24.3' S. of SW Cor., Lot 13, Block A, NRD Addition.
 Elev. = 1369.05 NAVD88



BAUGHMAN COMPANY
 315 Ellis St.
 Wichita, KS 67211
 316-262-7271
 BaughmanCo.com

NRD ADDITION

LINE 9A

STORM WATER DRAIN IMPROVEMENTS

PROJECT NUMBER: 21-03-E867

DESIGN: NBW DRAWN: TMS

DATE: August 5, 2021

SHEET 16 OF 46

Professional Engineer Seal: BRENT WOOLEY, LICENSED PROFESSIONAL ENGINEER, KANSAS, 8470, 08/06/2021.

File: E:\Projects\NRD Addition_19-04-P448\Engineering\Phase 1\SWD 21-03-E867\SWD.dwg