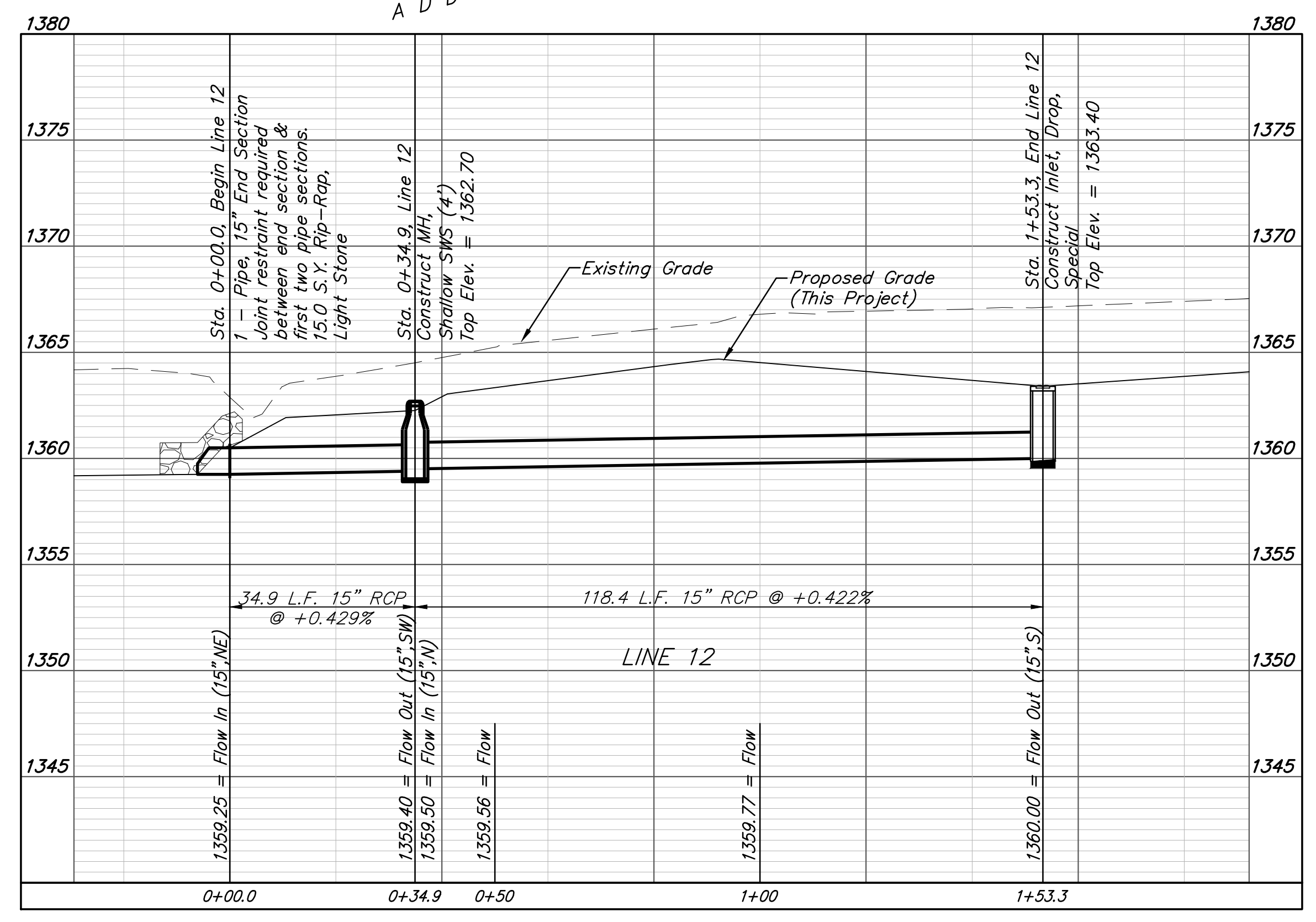
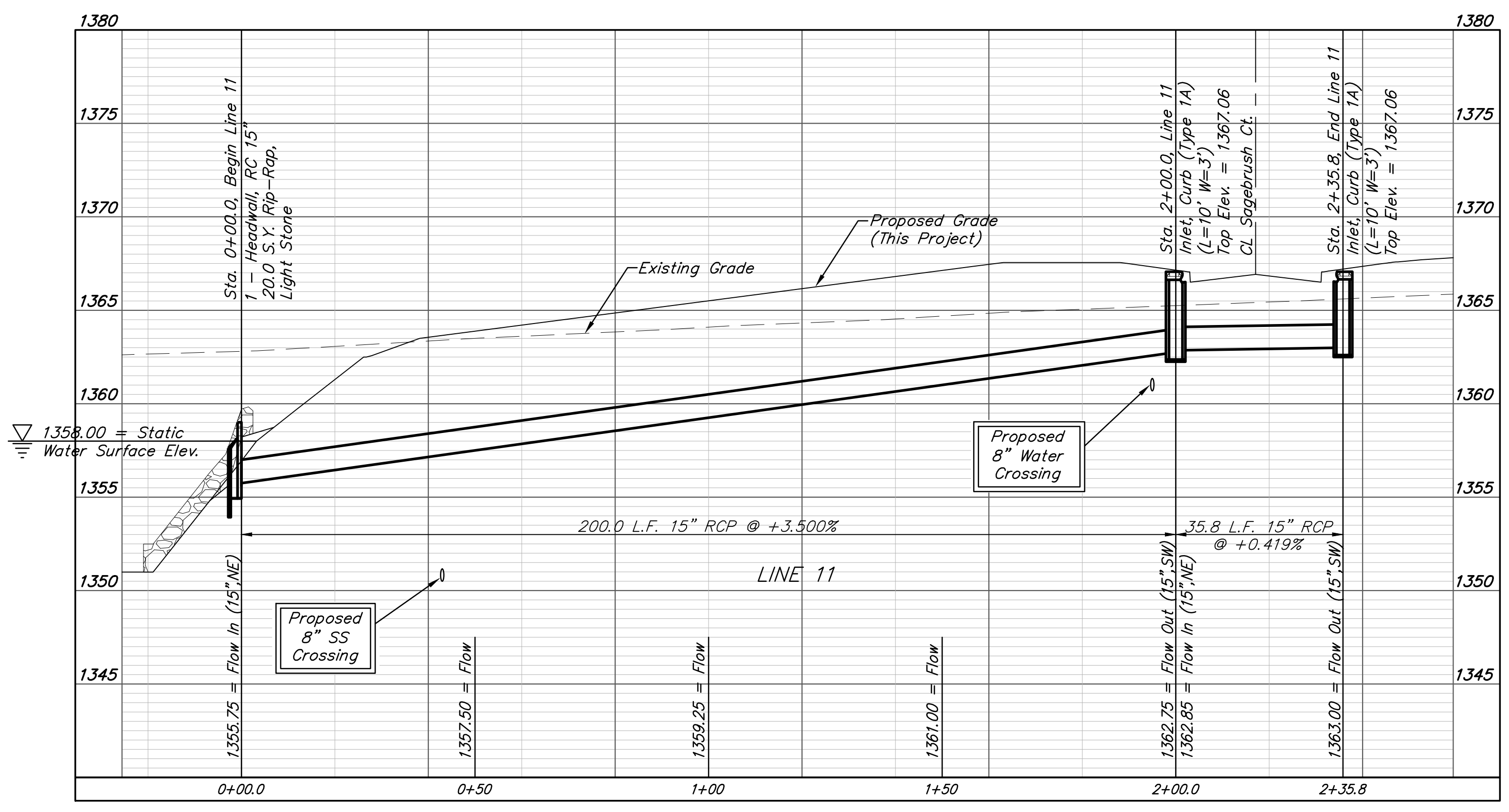
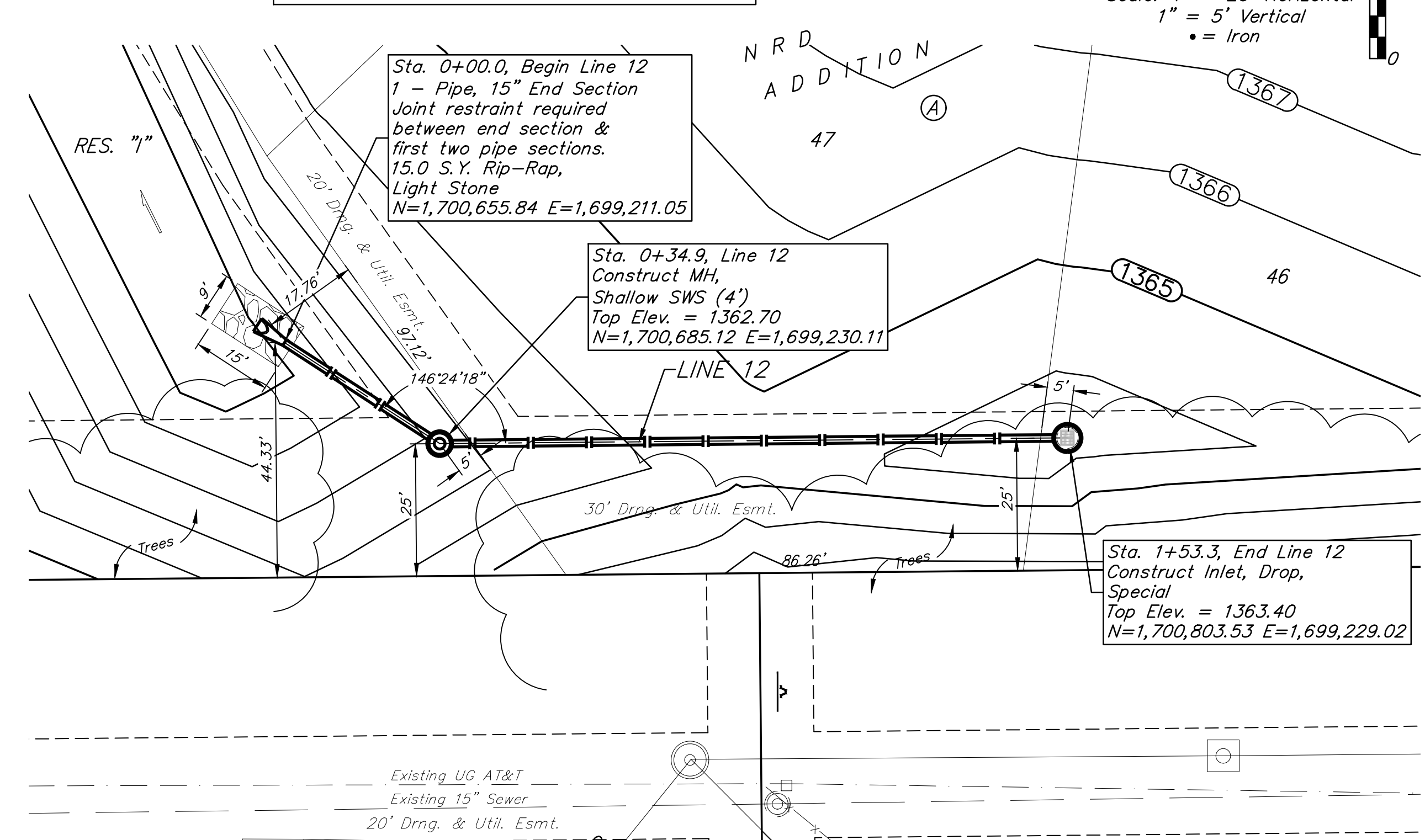
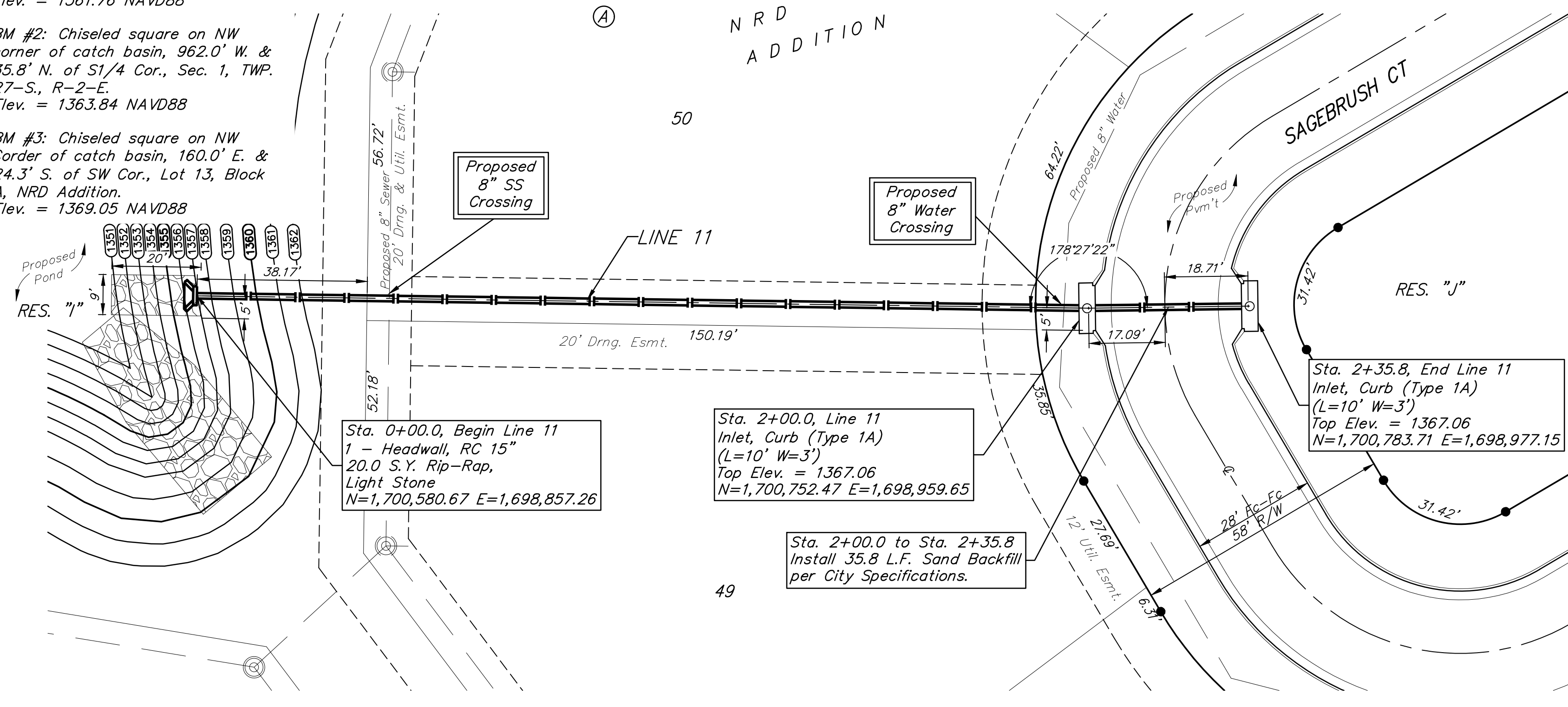
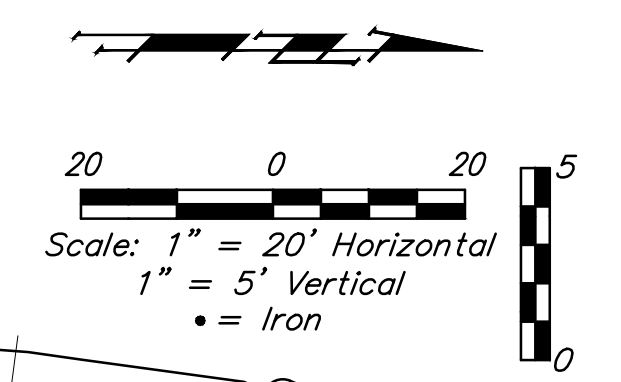


BENCHMARKS:
 BM #1: Chiseled square on NW corner of catch basin, 262.2' W. & 35.9' N. of S1/4 Cor., Sec. 1, TWP. 27-S, R-2-E.
 Elev. = 1361.76 NAVD88

BM #2: Chiseled square on NW corner of catch basin, 962.0' W. & 35.8' N. of S1/4 Cor., Sec. 1, TWP. 27-S, R-2-E.
 Elev. = 1363.84 NAVD88

BM #3: Chiseled square on NW corner of catch basin, 160.0' E. & 24.3' S. of SW Cor., Lot 13, Block A, NRD Addition.
 Elev. = 1369.05 NAVD88

Existing trees shall be trimmed/removed ONLY with approval of Developer. Trimming will only be permitted with chainsaws. Trees not in direct conflict with proposed new construction shall remain and be protected from damage. All removal/trimming shall be included in "Site Clearing".



BAUGHMAN COMPANY
 315 Ellis St.
 Wichita, KS 67211
 316-262-7271
 BaughmanCo.com

NRD ADDITION

LINES 11&12

STORM WATER DRAIN IMPROVEMENTS

PROJECT NUMBER:
21-03-E867

DESIGN: NBW DRAWN: TMS
 DATE: August 5, 2021

SHEET OF
19 46

File: E:\Projects\NRD Addition_19-04-P448\Engineering\Phase 1\SWD 21-03-E867\SWD.dwg