

When construction will occur within 50' of either side of NuStar gas pipeline, Contractor shall contact Kansas One-Call and NuStar a minimum of 72 hours prior to construction. Teresa Landry (316)322-0325.

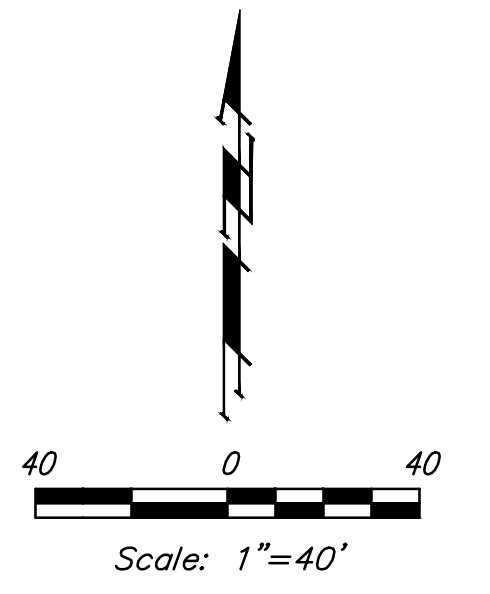
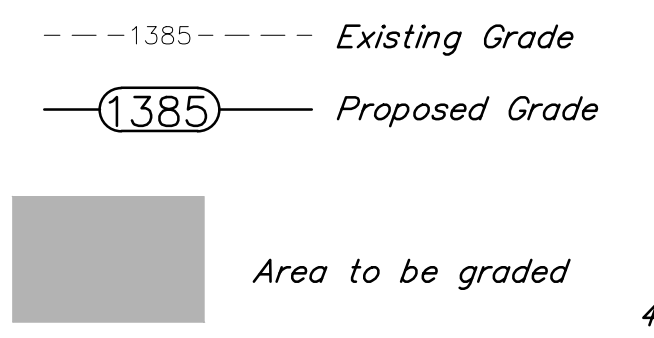
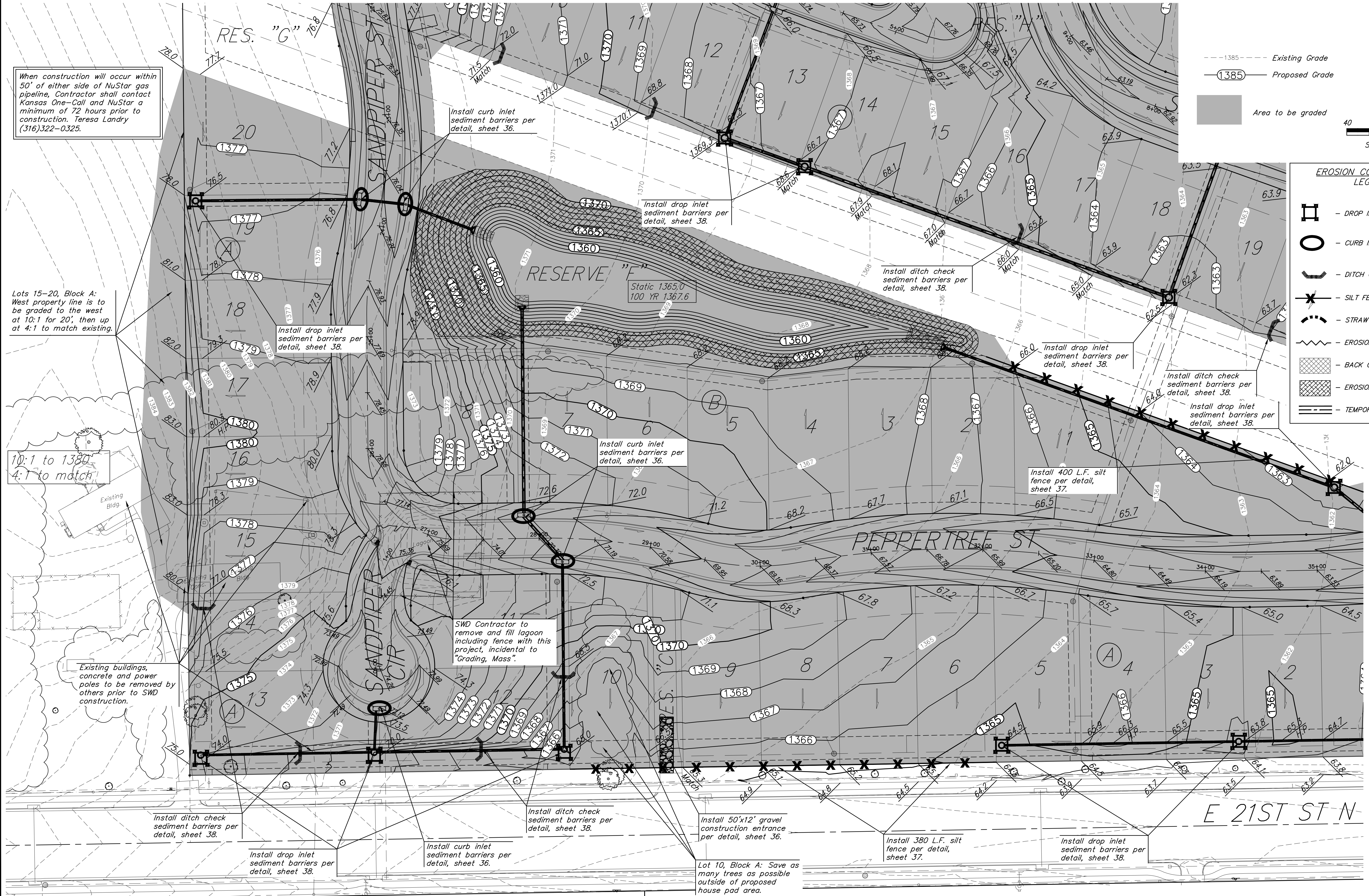
Lots 15-20, Block A: West property line is to be graded to the west at 10:1 for 20', then up at 4:1 to match existing.

10:1 to 1380  
4:1 to match

Existing buildings, concrete and power poles to be removed by others prior to SWD construction.

SWD Contractor to remove and fill lagoon including fence with this project, incidental to "Grading, Mass".

Lot 10, Block A: Save as many trees as possible outside of proposed house pad area.



**EROSION CONTROL PLAN LEGEND**

- [Symbol] - DROP INLET PROTECTION
- [Symbol] - CURB INLET PROTECTION
- [Symbol] - DITCH CHECKS
- [Symbol] - SILT FENCING
- [Symbol] - STRAW WATTLE DITCH CHECKS
- [Symbol] - EROSION CONTROL BERM
- [Symbol] - BACK OF CURB PROTECTION
- [Symbol] - EROSION CONTROL MAT
- [Symbol] - TEMPORARY DITCH

**BAUGHMAN COMPANY**  
 315 Ellis St.  
 Wichita, KS 67211  
 316-262-7271  
 BaughmanCo.com

NRD ADDITION

**MASS GRADING PLAN**

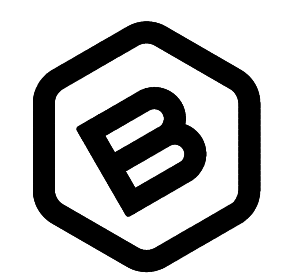
STORM WATER DRAIN IMPROVEMENTS

PROJECT NUMBER: 21-03-E867

DESIGN: NBW DRAWN: TMS

DATE: August 5, 2021

SHEET OF 22 46



File: E:\Projects\NRD Addition\_19-04-P448\Engineering\Phase 1\SWD 21-03-E867\SWD.dwg