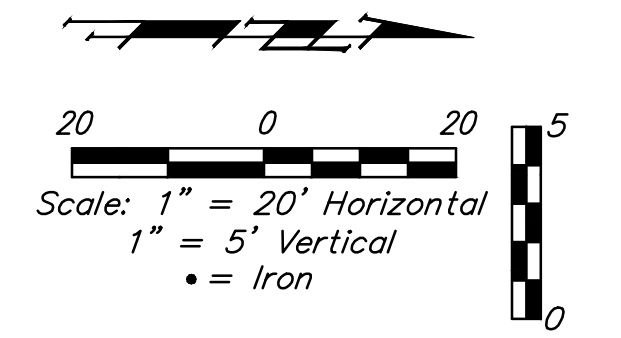
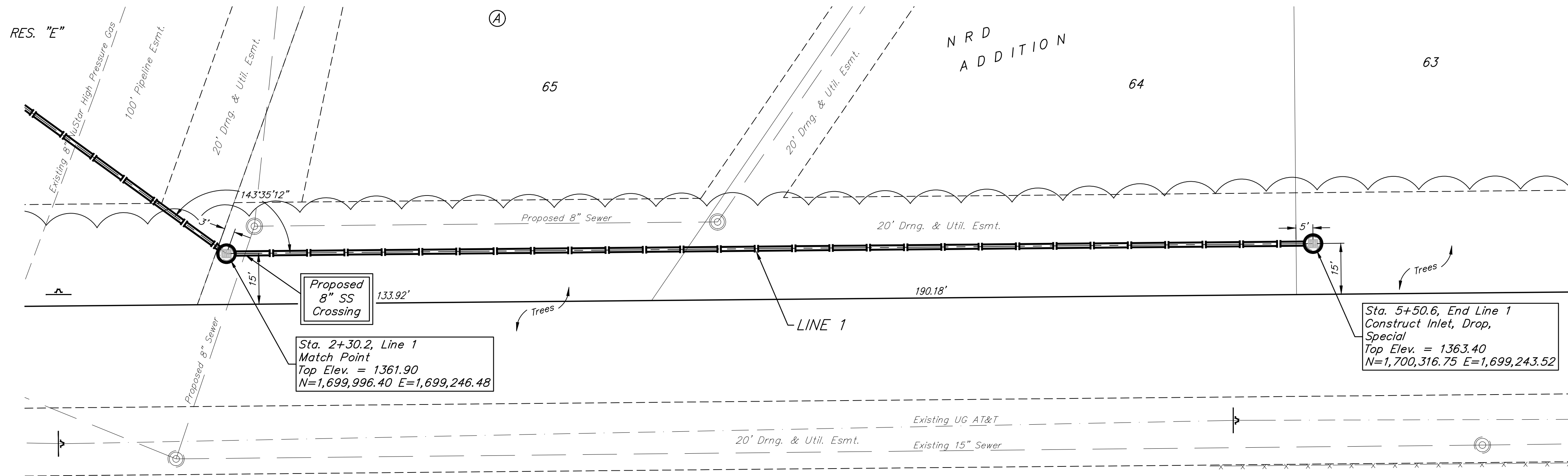


BENCHMARKS:
 BM #1: Chiseled square on NW corner of catch basin, 262.2' W. & 35.9' N. of S1/4 Cor., Sec. 1, TWP. 27-S., R-2-E.
 Elev. = 1361.76 NAVD88

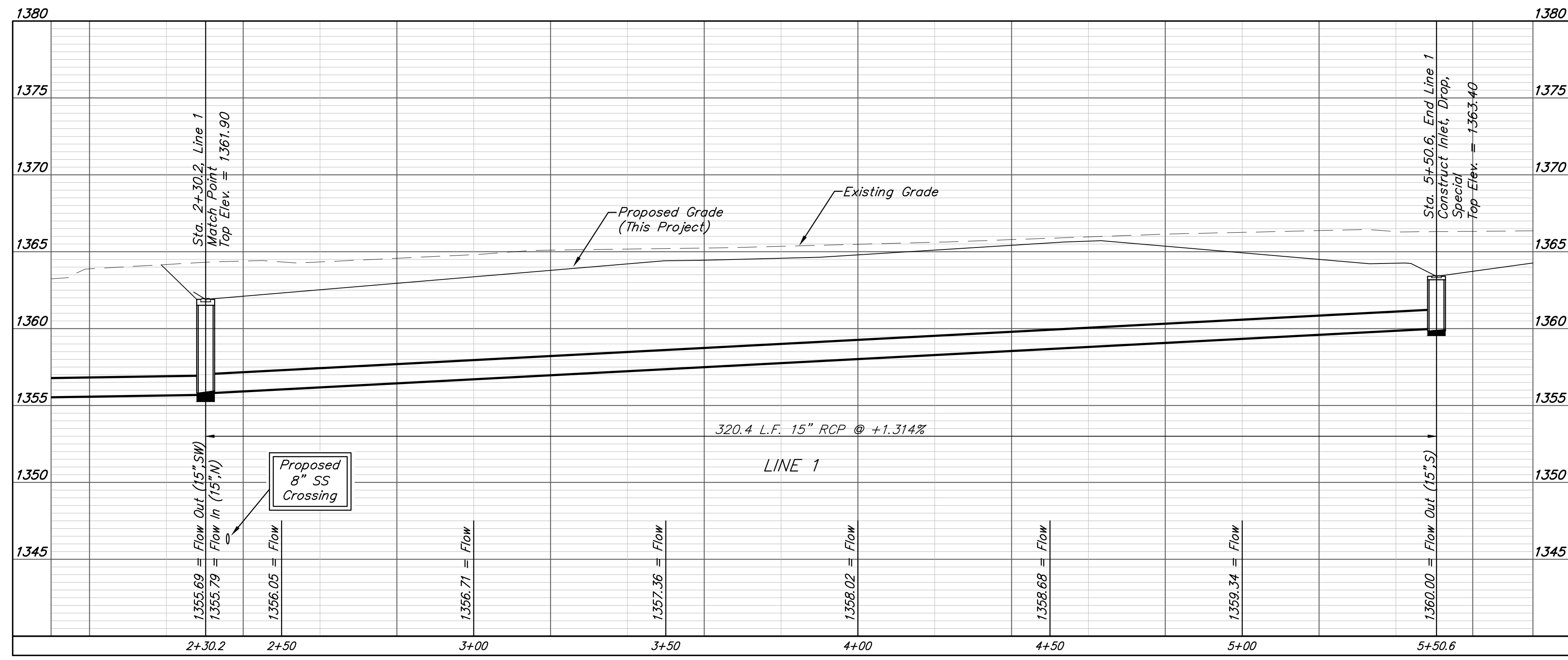
BM #2: Chiseled square on NW corner of catch basin, 962.0' W. & 35.8' N. of S1/4 Cor., Sec. 1, TWP. 27-S., R-2-E.
 Elev. = 1363.84 NAVD88

BM #3: Chiseled square on NW corner of catch basin, 160.0' E. & 24.3' S. of SW Cor., Lot 13, Block A, NRD Addition.
 Elev. = 1369.05 NAVD88



Existing trees shall be trimmed/removed ONLY with approval of Developer. Trimming will only be permitted with chainsaws. Trees not in direct conflict with proposed new construction shall remain and be protected from damage. All removal/trimming shall be included in "Site Clearing".

MONARCH LANDING ADDITION



BAUGHMAN COMPANY
 315 Ellis St.
 Wichita, KS 67211
 316-262-7271
 BaughmanCo.com

NRD ADDITION

LINE 1

STORM WATER DRAIN IMPROVEMENTS

PROJECT NUMBER: 21-03-E867

DESIGN: NBW DRAWN: TMS

DATE: August 5, 2021

SHEET 3 OF 46

Professional Engineer Seal: BRENT WOOLEY, LICENSED PROFESSIONAL ENGINEER, 8470, 08/06/2021, KANSAS.

File: E:\Projects\NRD Addition_19-04-P448\Engineering\Phase 1\SWD 21-03-E867\SWD.dwg