

SIDEWALK & TURN LANE IMPROVEMENTS

to serve

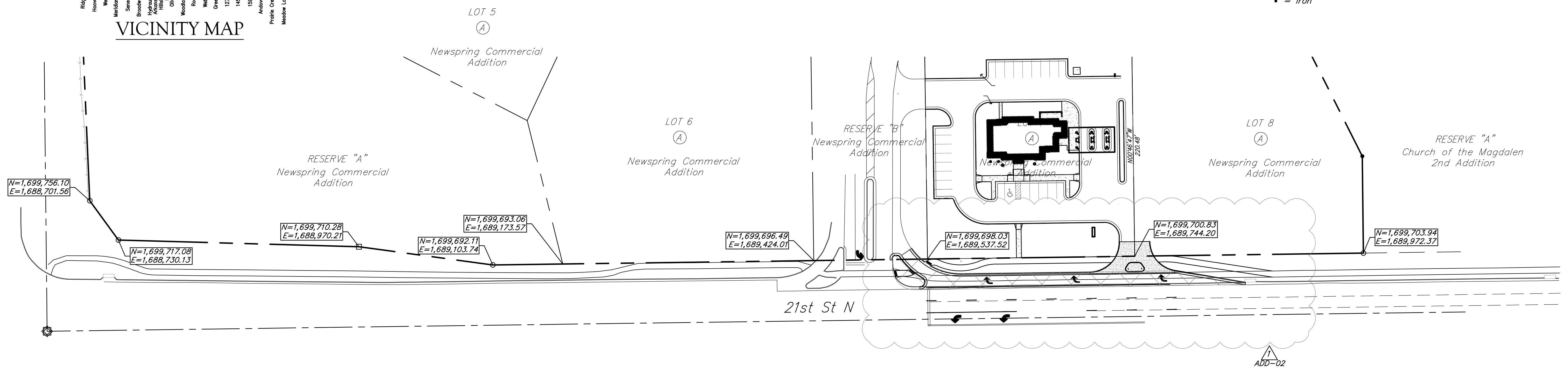
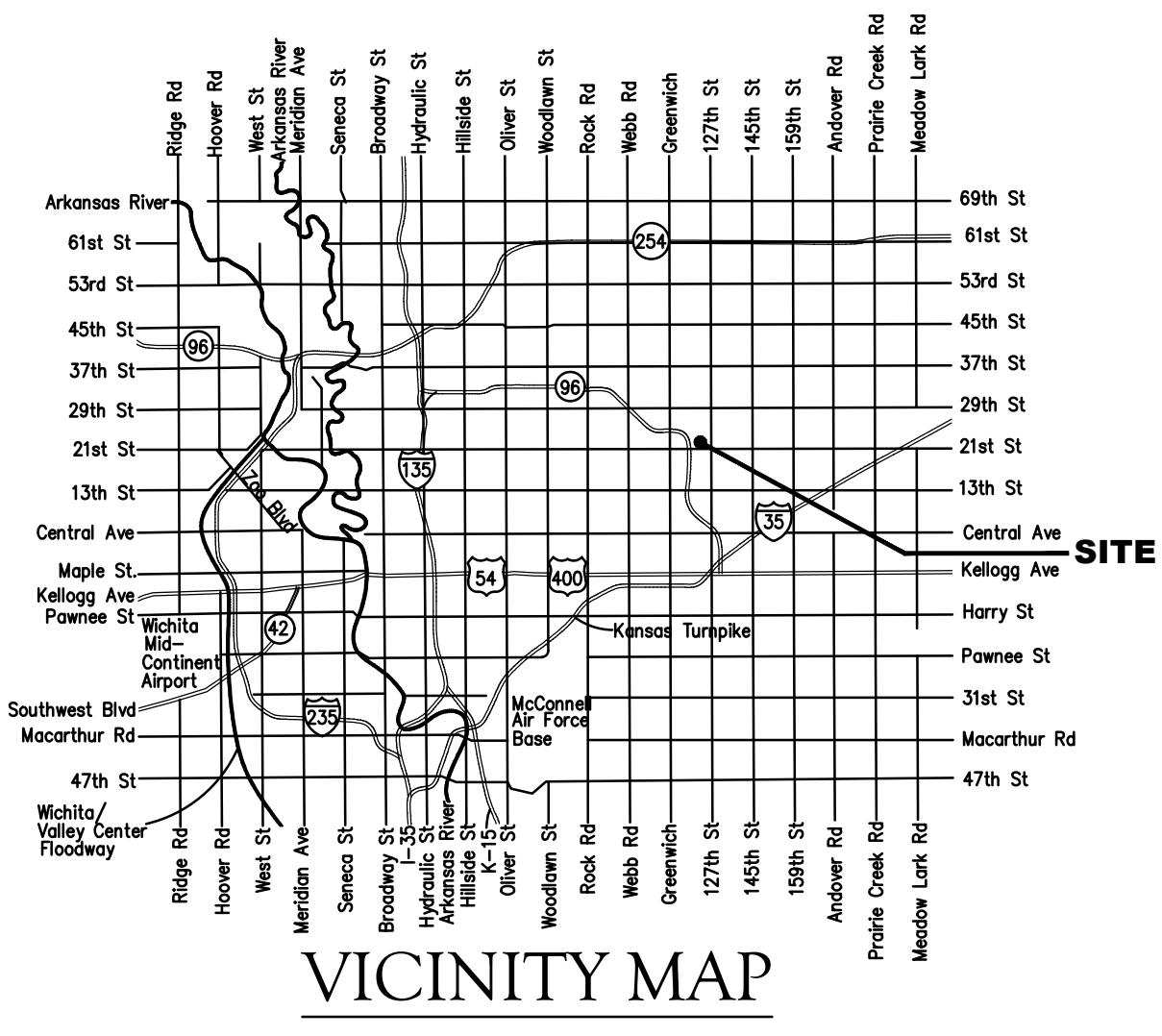
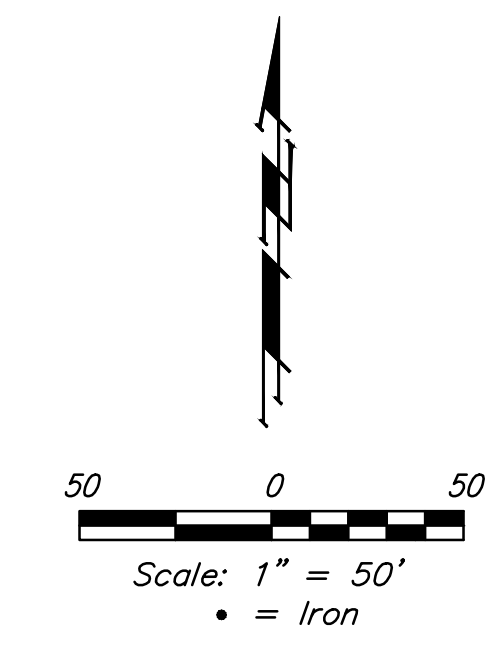
Newspring Commercial Addition

West 21st Street North Wichita, KS

Gary Janzen, P.E. City Engineer
472-2020-085652 47467220

SHEET INDEX

Title Sheet	1
District Plan	2
Key Sheet	3
Typical Sections & Details	4
21st St N & Drive Pavement Plan	5
Drive Entrance Detail	6
Marking & Signing Plan	7
Construction Sequencing Plan	8
Construction Traffic Control Details	9-12
Erosion Control	13
Erosion Control BMP Details	14-18
Restoration Plan	19
Cross Sections	20
Copy of Plat	21



GENERAL NOTES:

- Contractor will be required to provide notice to utility companies a minimum of Forty-Eight (48) hours prior to any excavation, as follows:

Kansas One-Call	687-2470
-----------------	----------

The Contractor must notify the following in case of an emergency:

Cox Communications	262-4270
Kansas Gas Service	1-888-482-4950
Westar Energy	383-8650
Aquila Energy	1-800-303-0357
Southwestern Bell	268-2245
City of Wichita Water Dept.	268-4563
City of Andover Sewer Maint.	733-2621
City of Andover Storm Sewer Maint.	733-1303
City of Andover Traffic Maint.	733-2723
NuStar Energy Pipeline Co.	1-800-481-0038
Southern Star Pipeline Co.	529-6600
- Utility service lines, poles, valve boxes, meters, and etcetera are to be adjusted as necessary by others prior to construction unless the plans specifically call for their adjustment by the Contractor or unless the plans specifically identify a utility to be adjusted by its owner during construction. Existing utilities and their location, as shown on the plans, represent the best information obtainable for design. The Contractor will be required to work around existing utilities within the right-of-way which do not conflict with proposed construction.
- Rubble from the removal of miscellaneous structures and excess excavation which is to be wasted shall be disposed of on sites to be provided by the Contractor. These sites shall be approved by the Engineer as to suitability, appearance and site location. Locations, in the opinion of the Engineer, that will leave an unsightly appearance will not be approved. All disposal sites must be approved by the Kansas Department of Health and Environment. Material either stockpiled or disposed of in a flood plain would require a Kansas State Board of Agriculture permit. Any material dumped in waters of

- The United States or wetlands is subject to U.S. Corps. of Engineers permitting regulations. Any material buried or stockpiled beyond approved construction limits would require additional archaeological investigations unless buried in a previously approved borrow location.
- Trees and shrubs in public right-of-way which are in direct conflict with proposed new construction shall be removed by the Contractor with the Engineer's approval. Trees and shrubs which are not in direct conflict with proposed new construction shall be saved and protected from damage.
- The Contractor shall give all property owners and/or tenants of developed property abutting the construction of this project a minimum of ten (10) days notice prior to start of construction.
- The Contractor shall be responsible for preserving property irons. The Contractor will be required to re-establish any property irons which are damaged or destroyed by his construction operations. Such irons shall be re-established by a licensed land surveyor in accordance with state laws.
- Excess excavation shall remain on site and be spread evenly on the lots outside of easements and R/W's providing the material is clean and relatively free of rocks. Excess excavation shall be placed in areas to be landscaped between the proposed sidewalk and the curb line on the Credit Union of America site or as directed by the engineer. Material which, in the opinion of the Engineer, is unsuitable for use as fill material shall be wasted per General Note 3.
- All existing and proposed erosion control measures including silt fencing, erosion control mat, straw bales, inlet barriers, and const. entrance shall be maintained throughout construction by the contractor and until project is accepted by the City of Wichita. The on-site engineer shall complete weekly reports on the status of erosion control measures. The contractor shall be

BENCHMARKS

BM #1: Chiseled square, top of curb, 426.4' W. & 960.0' N. of the SE Corner, Lot 8, Block A, Newspring Commercial Addition, (N24°43'48"W, 1050.41' from SE Corner, Lot A, Block A).
Elevation=1389.22(NAVD88)

BM #2: Center of sanitary sewer manhole located 124.3' east and 11.3' north of the southwest corner of the site.
Elevation=1378.30 (NAVD88)

- All areas disturbed during construction shall be sodded at with buffalo grass immediately following construction in that area. Contractor shall prepare ground per City Specifications.

All costs associated with sodding shall be included in the price bid per Acre for "Sodding." All sodding operations shall conform to City of Wichita Standard Specifications.
- A saw cut of at least one-half the depth of existing surface courses or one-fourth the depth of the existing total pavement thickness shall be provided at locations where proposed construction abuts the existing surface course or pavement for which partial removal of that surface or pavement is required. Sawed joint to facilitate removal within three (3) feet of existing joints will not be permitted and for such instances the limits of removal shall extend to the existing joint. Such saw cuts will not be paid for directly and this cost shall be considered as subsidiary to the removal of the surface or pavement.
- The Contractor shall adjust valve boxes as necessary to match proposed grade. All costs associated with valve box adjustments shall be included in the price bid per each for "Adjust Valve Box to Grade."
- The Contractor shall satisfy himself with the Earthwork Quantities as bid for "Excavation" and "Compacted Fill" prior to bidding. No additional payments or change orders for earthwork will be accepted.
- The developer for this project is Credit Union of America, Attn: Lea Ann Gabbert, 650 S. Westdale Drive, Ste. 100 Wichita, KS 67209 (316)247-5519 LeaAnn@cuofamerica.com



August 28, 2021

BAUGHMAN COMPANY
315 Ellis St. Wichita, KS 67211 316-262-7271
BaughmanCo.com

E:\Projects\Newspring Commercial Addition\Engineering\Phase 1\15NNSA STR rev1.dwg