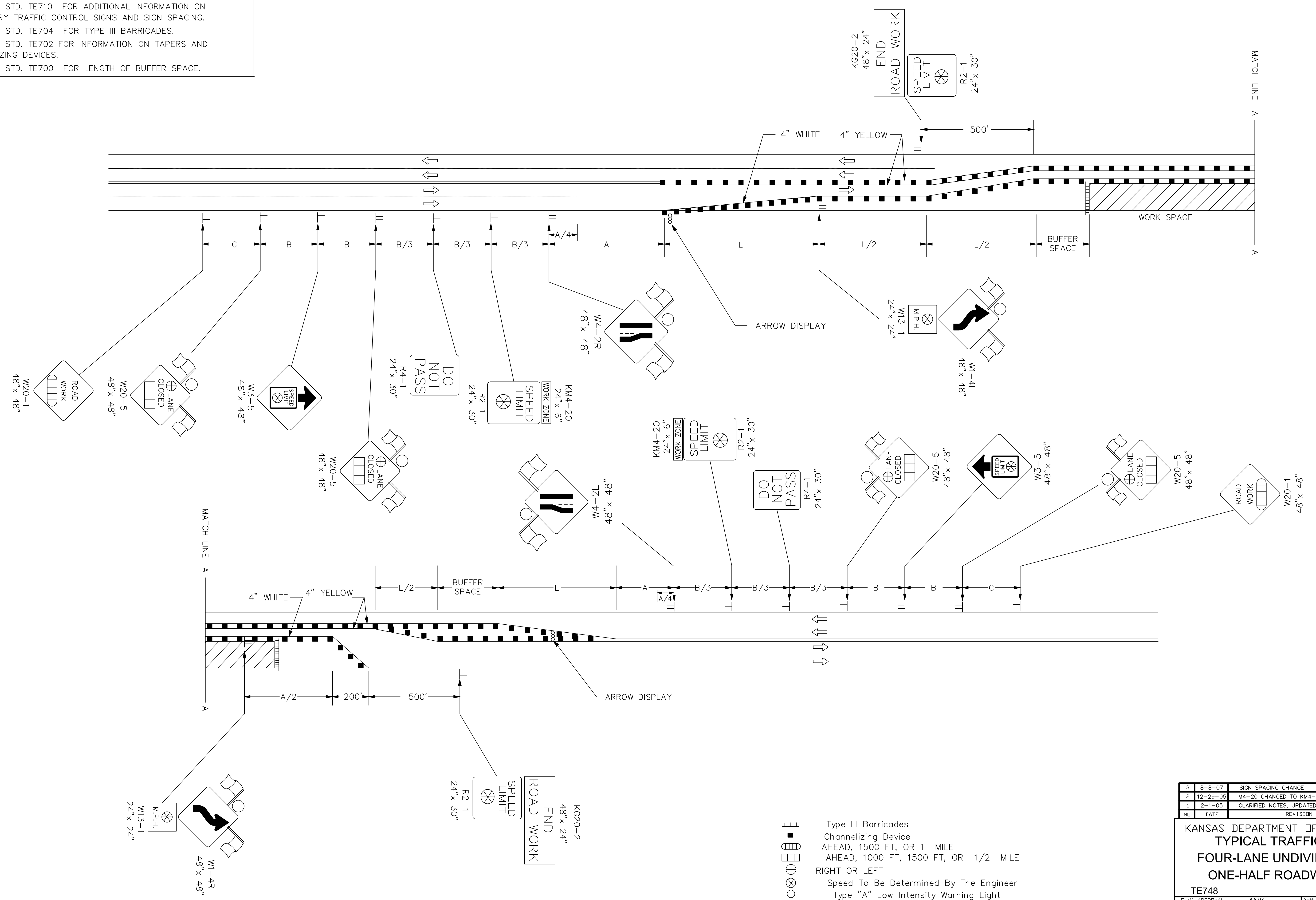


REFER TO STD. TE710 FOR ADDITIONAL INFORMATION ON TEMPORARY TRAFFIC CONTROL SIGNS AND SIGN SPACING.  
 REFER TO STD. TE704 FOR TYPE III BARRICADES.  
 REFER TO STD. TE702 FOR INFORMATION ON TAPERS AND CHANNELIZING DEVICES.  
 REFER TO STD. TE700 FOR LENGTH OF BUFFER SPACE.



- ▬ Type III Barricades
- Channelizing Device
- ▬ AHEAD, 1500 FT, OR 1 MILE
- ▬ AHEAD, 1000 FT, 1500 FT, OR 1/2 MILE
- ⊕ RIGHT OR LEFT
- ⊗ Speed To Be Determined By The Engineer
- Type "A" Low Intensity Warning Light

3	8-8-07	SIGN SPACING CHANGE	M.B.	A.A.A.
2	12-29-05	M4-20 CHANGED TO KM4-20	M.B.	A.A.A.
1	2-1-05	CLARIFIED NOTES, UPDATED WARNING SIGNS	B.H.	A.A.A.
NO.	DATE	REVISION	BY	APP'D

**KANSAS DEPARTMENT OF TRANSPORTATION**  
**TYPICAL TRAFFIC CONTROL**  
**FOUR-LANE UNDIVIDED HIGHWAY**  
**ONE-HALF ROADWAY CLOSED**  
**TE748**

FHWA APPROVAL	8-8-07	APP'D	Anthony A. Arobare
DESIGNED	BAH	DETAILED	BAH
QUANTITIES	TRACED	DESIGN	CK
DETAIL	CK	QUAN	CK
TRACE	CK		