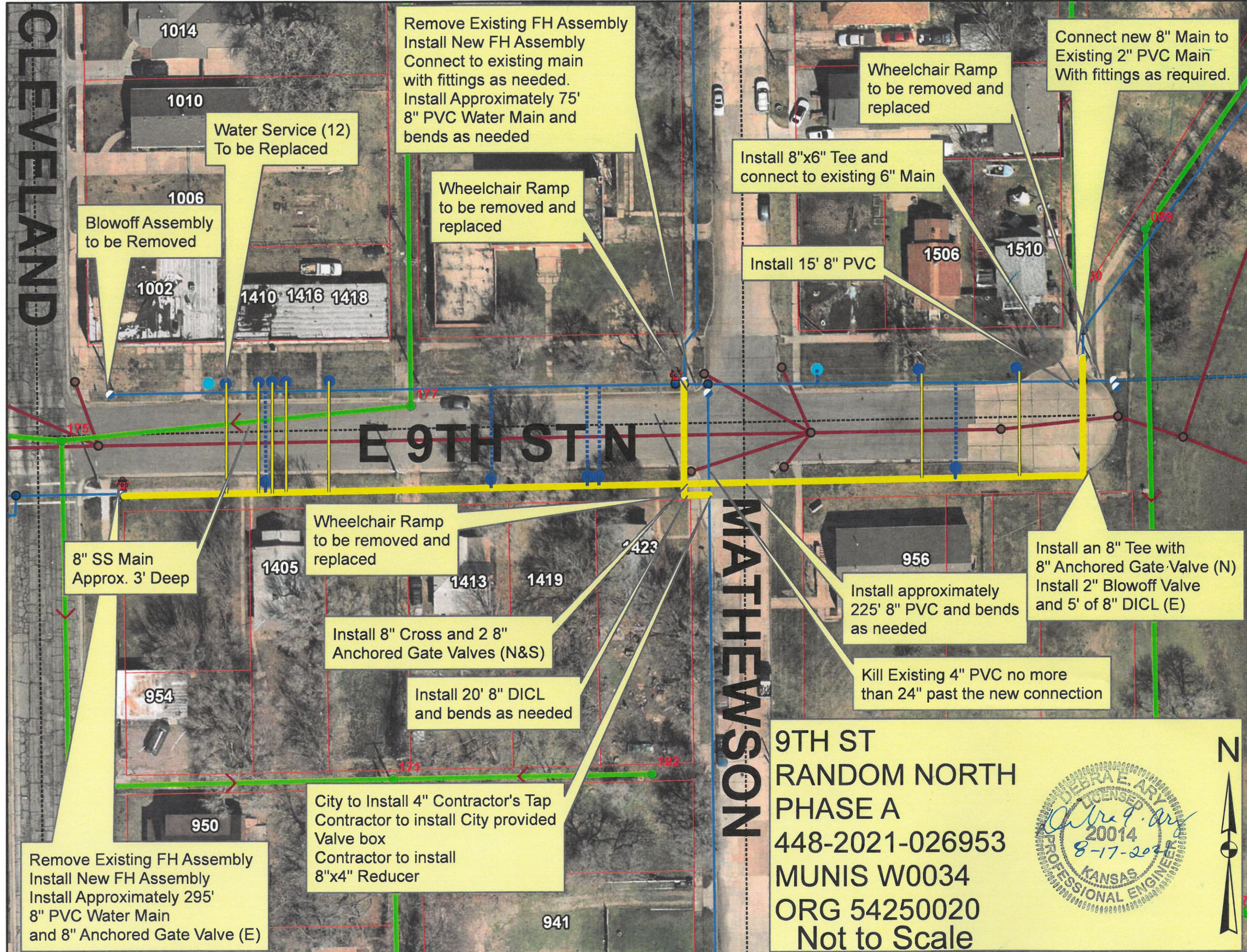


CLEVELAND



1014
1010
1006
1002
1410 1416 1418

Water Service (12)
To be Replaced

Blowoff Assembly
to be Removed

Remove Existing FH Assembly
Install New FH Assembly
Connect to existing main
with fittings as needed.
Install Approximately 75'
8" PVC Water Main and
bends as needed

Wheelchair Ramp
to be removed and
replaced

Install 8"x6" Tee and
connect to existing 6" Main

Install 15' 8" PVC

Connect new 8" Main to
Existing 2" PVC Main
With fittings as required.

8" SS Main
Approx. 3' Deep

Wheelchair Ramp
to be removed and
replaced

Install 8" Cross and 2 8"
Anchored Gate Valves (N&S)

Install 20' 8" DICL
and bends as needed

Install approximately
225' 8" PVC and bends
as needed

Install an 8" Tee with
8" Anchored Gate Valve (N)
Install 2" Blowoff Valve
and 5' of 8" DICL (E)

Kill Existing 4" PVC no more
than 24" past the new connection

Remove Existing FH Assembly
Install New FH Assembly
Install Approximately 295'
8" PVC Water Main
and 8" Anchored Gate Valve (E)

City to Install 4" Contractor's Tap
Contractor to install City provided
Valve box
Contractor to install
8"x4" Reducer

MATHEWSON

9TH ST
RANDOM NORTH
PHASE A
448-2021-026953
MUNIS W0034
ORG 54250020
Not to Scale

