

CITY OF WICHITA, KANSAS

MICHAEL E. LINDEBAK, P.E., CITY ENGINEER

STREET IMPROVEMENTS

SHEET NO.	TOTAL SHEETS
1	8

BRANDON/LOCKMOOR - N.L. COUNTRYSIDE TO E.L. LOT 1, BLOCK 2
AND E.L. LOT 13, BLOCK 1
COUNTRYSIDE/COUNTRYSIDE CIRCLE - E.L. LOT 35, BLOCK 1
AND E.L. LOT 11, BLOCK 2 TO
AND INCLUDING CUL-DE-SAC

IN SMITHMOOR FIRST ADDITION

PROJECT NO. 472-76-245-80001-000-000-047

INDEX OF SHEETS

1. TITLE SHEET
2. PLAT
3. TYPICAL 29' PAVEMENT DETAILS
4. COUNTRYSIDE CIRCLE/COUNTRYSIDE PAVING PLAN
5. BRANDON PAVING PLAN - STA. 22+15.14 TO STA. 25+40.09
6. BRANDON PAVING PLAN - STA. 25+40.09 TO STA. 29+30.77
7. BRANDON/LOCKMOOR - STA. 29+30.77 TO STA. 31+19.07
8. STANDARD DRIVE ENTRANCES

PROJECT SURVEY CONTROL

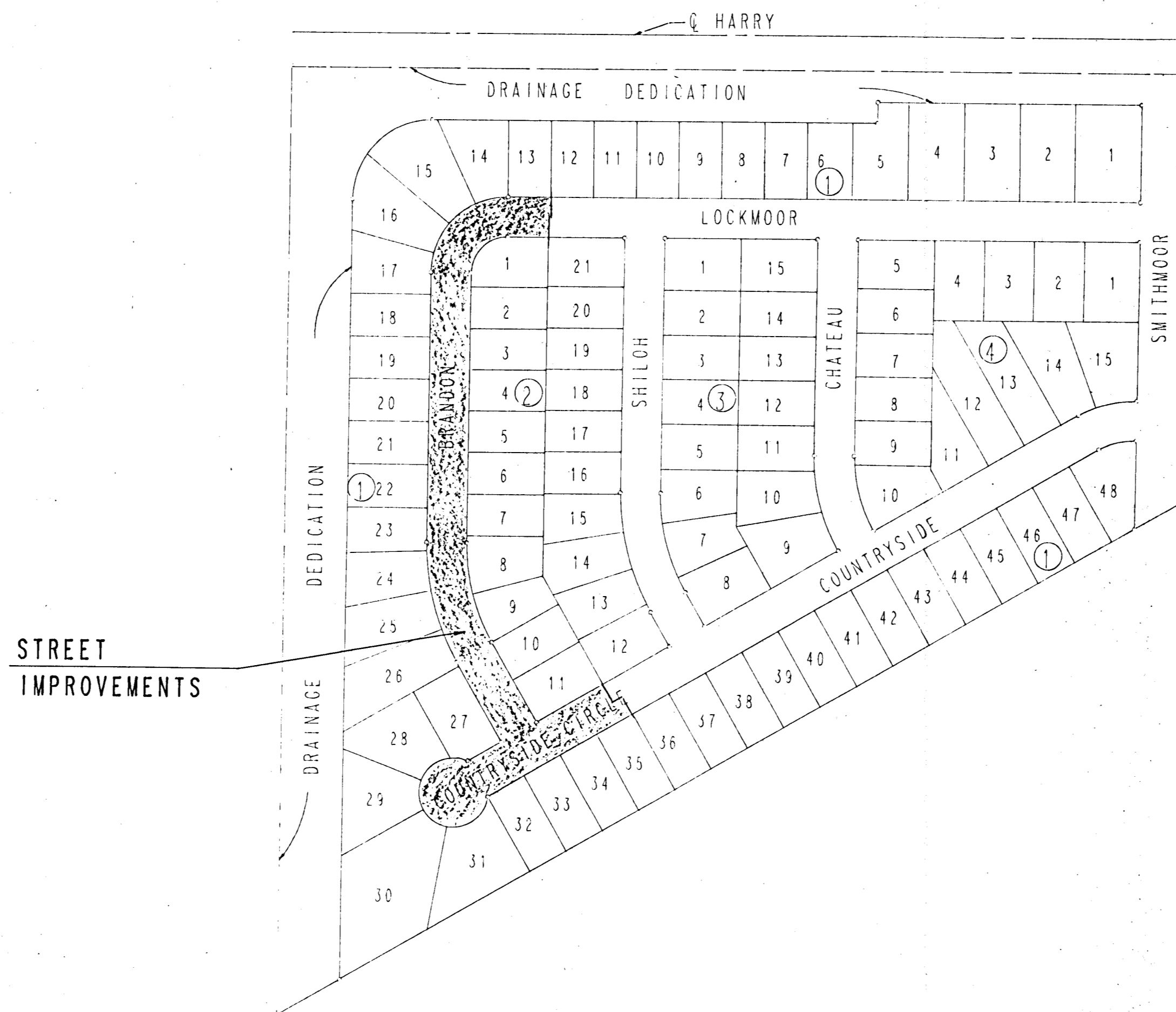
- VERTICAL DATUM: CITY OF WICHITA DATUM
- DATUM BENCH MARK: CHIS. "D" ON NE COR. RCB, 924' E. OF & WEBB ROAD ON N. SIDE HARRY ST. ELEV. = 167.11
- BENCH MARK: CITY OF WICHITA STANDARD BENCH MARK DISC. 37.8' N. OF 1/4 COR. SEC. 33, T27S, R2E. (1/2 MILE EAST OF WEBB ROAD, N. SIDE HARRY ST. BY PUMP STATION. ELEV. = 155.53
- BENCH MARK: S.E. COR. OF CONCRETE FOOTING OF POWER POLE RISE ON S. SIDE HARRY ST., 375' E. OF 1/4 COR. SEC. 33, T27S, R2E. ELEV. = 156.61
- BENCH MARK: RR SPIKE IN OSAGE ORANGE IN HEDGE ROW (E-W) APPROX. 750' S.E. OF 1/4 COR. SEC. 33, T27S, R2E. ELEV. = 158.59
- BENCH MARK: N. RIM S.S. MANHOLE @ PUMP STATION 1/2 MILE E. OF WEBB RD. ON N. SIDE HARRY ST. ELEV. = 156.12
- BENCH MARK: RR SPIKE IN 2ND P.P.W. OF N-S HEDGE ROW @ N.E. COR. SMITHMOOR 1ST., S. SIDE HARRY STREET ELEV. = 154.09
- BENCH MARK: RR SPIKE IN E. FC COTTONWOOD, S. OF HEDGE ROW APPROX. 300', N.E. COR. SHILOH & COUNTRYSIDE. ELEV. = 159.28

APPROVED AS NOTED
BY CITY ENGINEER OF WICHITA

NOTE TO CONTRACTOR

- SANITARY SEWERS _____
- STORM SEWERS _____
- DRIVEWAY APPROACHES _____
- WATER MAINS _____
- PAVING U.P.H. 11/15/88

INSPECTION AND TESTING FOR THIS PROJECT IS TO BE PROVIDED BY A LICENSED CONSULTING ENGINEERING FIRM UNDER CONTRACT WITH THE OWNER/DEVELOPER. SAID INSPECTION TO BE IN ACCORDANCE WITH THE CITY OF WICHITA STANDARD CONSTRUCTION ENGINEERING PRACTICES AND CERTIFIED BY A LICENSED PROFESSIONAL ENGINEER. NO WORK SHALL BE PERFORMED IN DEDICATED EASEMENTS OR PUBLIC RIGHT-OF-WAY BY THE CONTRACTOR WITHOUT SUCH INSPECTION NOR SHALL ANY WORK BE COMMENCED IN DEDICATED EASEMENTS OR PUBLIC RIGHT-OF-WAY WITHOUT WRITTEN AUTHORIZATION BY THE CITY ENGINEER.



STREET IMPROVEMENTS

SCALE: 1" = 150'

GENERAL NOTES

ALL MATERIALS AND CONSTRUCTION METHODS SHALL BE IN ACCORDANCE WITH CITY OF WICHITA SPECIFICATIONS.

UNDERGROUND UTILITY SERVICE LINES AND OVERHEAD UTILITY POLE LINES ARE TO BE ADJUSTED AS NECESSARY BY OTHERS PRIOR TO CONSTRUCTION UNLESS THE PLANS SPECIFICALLY CALL FOR THEIR ADJUSTMENT BY THE CONTRACTOR. EXISTING UTILITIES AND THEIR LOCATION, AS SHOWN ON THE PLANS, REPRESENT THE BEST INFORMATION OBTAINABLE FOR DESIGN. LOCATION INFORMATION HAS BEEN OBTAINED FROM THE VARIOUS UTILITY COMPANIES AND IS EITHER FROM COMPANY RECORD DRAWINGS OR COMPANY PROVIDED FIELD LOCATIONS. THE CONTRACTOR WILL BE REQUIRED TO WORK AROUND EXISTING UTILITIES WITHIN THE RIGHT-OF-WAY WHICH DO NOT CONFLICT WITH PROPOSED CONSTRUCTION.

RUBBLE FROM THE REMOVAL OF MISCELLANEOUS STRUCTURES AND EXCESS EXCAVATION WHICH IS TO BE WASTED SHALL BE DISPOSED OF ON SITES TO BE PROVIDED BY THE CONTRACTOR. THESE SITES SHALL BE APPROVED BY THE ENGINEER AS TO SUITABILITY, APPEARANCE AND SITE LOCATION. LOCATIONS THAT, IN THE OPINION OF THE ENGINEER, WILL LEAVE AN UNSIGHTLY APPEARANCE WILL NOT BE APPROVED.

THE CONTRACTOR SHALL NOTIFY PIPELINE COMPANIES AT LEAST 24 HOURS IN ADVANCE OF ANY WORK BEING PERFORMED ACROSS AND/OR ADJACENT TO PIPELINES.

CONTRACTOR SHALL SATISFY HIMSELF OF SUBSURFACE CONDITIONS PRIOR TO CONSTRUCTION.

TREES AND SHRUBS IN PUBLIC RIGHT-OF-WAY WHICH ARE IN DIRECT CONFLICT WITH PROPOSED NEW CONSTRUCTION SHALL BE REMOVED BY THE CONTRACTOR WITH THE ENGINEER'S APPROVAL. TREES AND SHRUBS WHICH ARE NOT IN DIRECT CONFLICT WITH PROPOSED NEW CONSTRUCTION SHALL BE SAVED AND PROTECTED FROM DAMAGE.

THE CONTRACTOR SHALL GIVE ALL PROPERTY OWNERS AND/OR TENANTS OF DEVELOPED PROPERTY DIRECTLY ADJUTING THE CONSTRUCTION OF THIS PROJECT A MINIMUM OF TEN (10) DAYS ADVANCE NOTICE PRIOR TO START OF CONSTRUCTION.

THE CONTRACTOR SHALL BE RESPONSIBLE FOR PRESERVING PROPERTY IRONS. THE CONTRACTOR WILL BE REQUIRED TO RE-ESTABLISH ANY PROPERTY IRONS WHICH ARE DAMAGED OR DESTROYED BY HIS CONSTRUCTION OPERATIONS. SUCH IRONS SHALL BE RE-ESTABLISHED BY A LICENSED LAND SURVEYOR IN ACCORDANCE WITH STATE LAWS.

THE CONTRACTOR SHALL FERTILIZE, SEED AND MULCH ALL DISTURBED AREAS WITHIN THE DRAINAGE DEDICATION AND HARRY ST. RIGHT-OF-WAY AS DIRECTED BY THE ENGINEER. THIS WORK SHALL BE PAID FOR AT THE UNIT PRICE BIDS FOR "FERTILIZING AND SEEDING" AND "MULCHING". SAID PRICE SHALL BE CONSIDERED FULL COMPENSATION FOR ALL MATERIALS, LABOR, TOOLS, EQUIPMENT, AND INCIDENTALS NECESSARY TO COMPLETE THE WORK IN ACCORDANCE WITH C.O.W. STANDARD SPECIFICATIONS. THE APPROXIMATE QUANTITY FOR THIS WORK IS 0.1 ACRE.

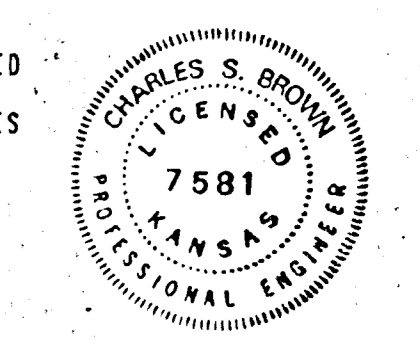
EXISTING ELEVATIONS AND IMPROVEMENTS SHOWN ARE BY SURVEY DATED SEPT. 7, 1988. CONTRACTOR SHALL INSPECT SITE TO DETERMINE FOR HIMSELF THE EXTENT OF MODIFICATIONS AFTER SURVEY WAS MADE.

CONTRACTOR WILL BE REQUIRED TO PROVIDE A MINIMUM ADVANCE NOTICE OF TWENTY-FOUR (24) HOURS TO UTILITY COMPANIES PRIOR TO STARTING ANY EXCAVATION AS FOLLOWS:

- SOUTHWESTERN BELL TELEPHONE COMPANY 1-316-571-2611
- CABLEVISION 282-4270 OR 263-2061
- KPL GAS SERVICE 263-7511
- KANSAS GAS & ELECTRIC 264-1141
- CITY OF WICHITA WATER DEPARTMENT 268-4908
- CITY OF WICHITA SEWER DEPARTMENT 268-4071
- ARKLA GAS COMPANY 942-8350 OR 263-8161

PROPERTIES WITHIN THE PROJECT LIMITS MAY HAVE UNDERGROUND SPRINKLER SYSTEMS IN PUBLIC RIGHTS-OF-WAY WHICH CONFLICT WITH NEW CONSTRUCTION. CONTRACTOR WILL BE REQUIRED TO REMOVE SUCH IMPROVEMENTS SHOULD THEY NOT BE REMOVED BY THEIR OWNER AT THE TIME OF CONSTRUCTION OF THE PROJECT. THE CONTRACTOR WILL BE REQUIRED TO SALVAGE ALL SPRINKLER HEADS AND/OR VALVES AND GIVE SUCH MATERIAL TO THEIR OWNER. PORTIONS OF UNDERGROUND SPRINKLER SYSTEMS NOT IN CONFLICT WITH NEW CONSTRUCTION SHALL BE PROTECTED FROM DAMAGE AND SHALL REMAIN IN PLACE. ALL WORK IN CONNECTION WITH UNDERGROUND SPRINKLER SYSTEMS SHALL BE CONSIDERED AS SUBSIDIARY TO THE CONTRACT PAY ITEMS OF WORK.

MAILBOXES WITHIN THE LIMITS OF THE PROJECT SHALL BE REMOVED AND REPLACED BY THE CONTRACTOR AS APPROVED BY THE ENGINEER. CONTRACTOR WILL BE REQUIRED TO MAKE SATISFACTORY PROVISIONS FOR MAIL DELIVERY TO PROPERTIES AFFECTED BY THIS PROJECT DURING ITS CONSTRUCTION.



SEPTEMBER, 1988

PLANS PREPARED BY

PROFESSIONAL ENGINEERING CONSULTANTS, P.A.

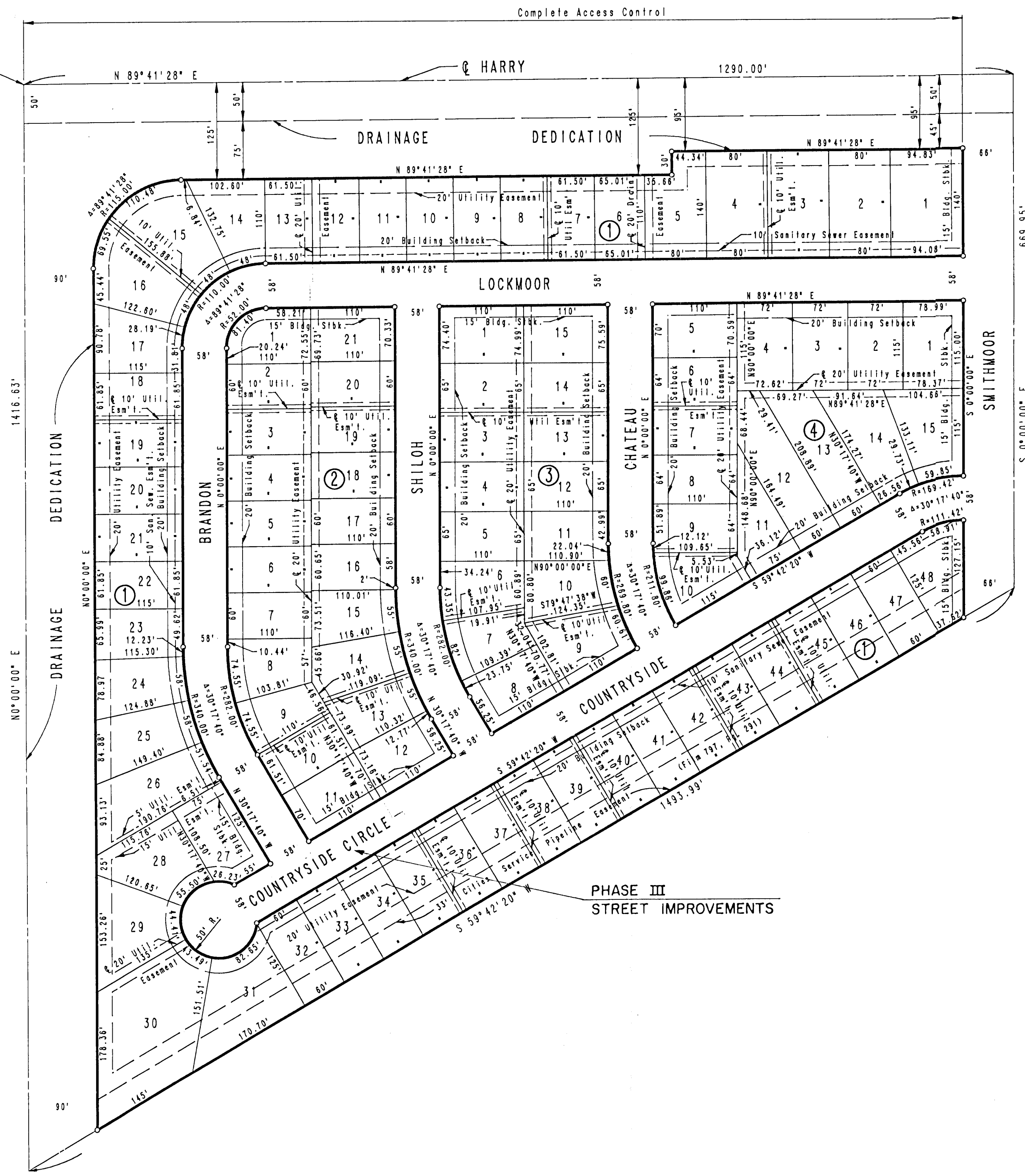
ENGINEERS

WICHITA, KANSAS

SMITHMOOR FIRST ADDITION

WICHITA, SEDGWICK COUNTY, KANSAS

N.W. Cor. N.E. 1/4 Sec. 33
T27S, R2E of the 6th P.M.



SCALE: 1" = 100'
 ○ = IRON SET
 B.M. - N.W. COR. N. HEADWALL R.C.B. 800'± E.
 N.W. COR. N.E. 1/4 SEC. 33, T27S, R2E
 ELEV. = 1339.47 M.S.L.
 MINIMUM PAD ELEVATION FOR
 LOTS 1 THROUGH 30, BLOCK 1 EQUALS
 1341.0 M.S.L. OR 153.60 CITY DATUM

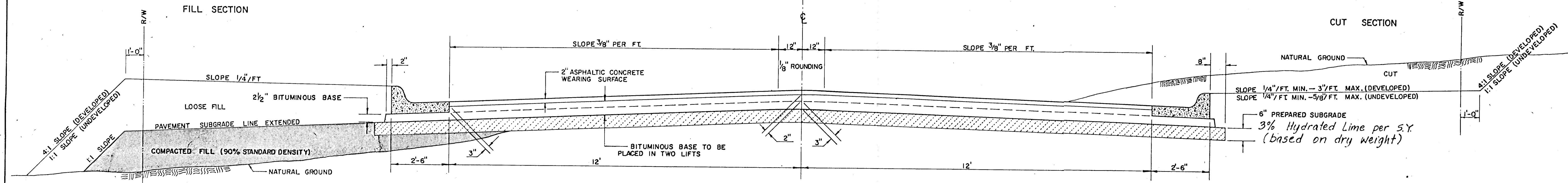
PLAT

PROFESSIONAL ENGINEERING CONSULTANTS, P.A.
 ENGINEERS
 WICHITA, KANSAS

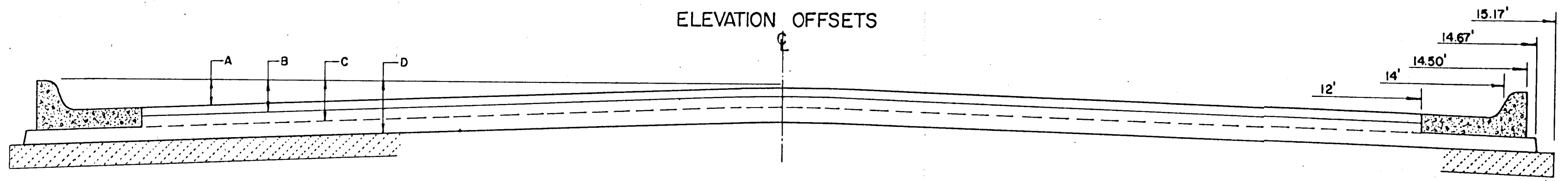
Designed by	Checked by
Drawn by DEP	Date
Job No. 88422	

TYPICAL 29' PAVEMENT DETAILS

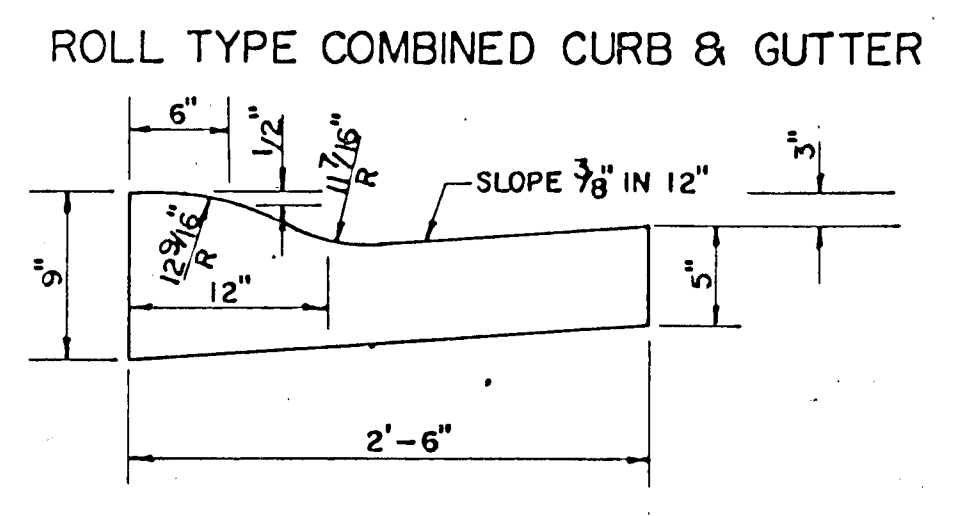
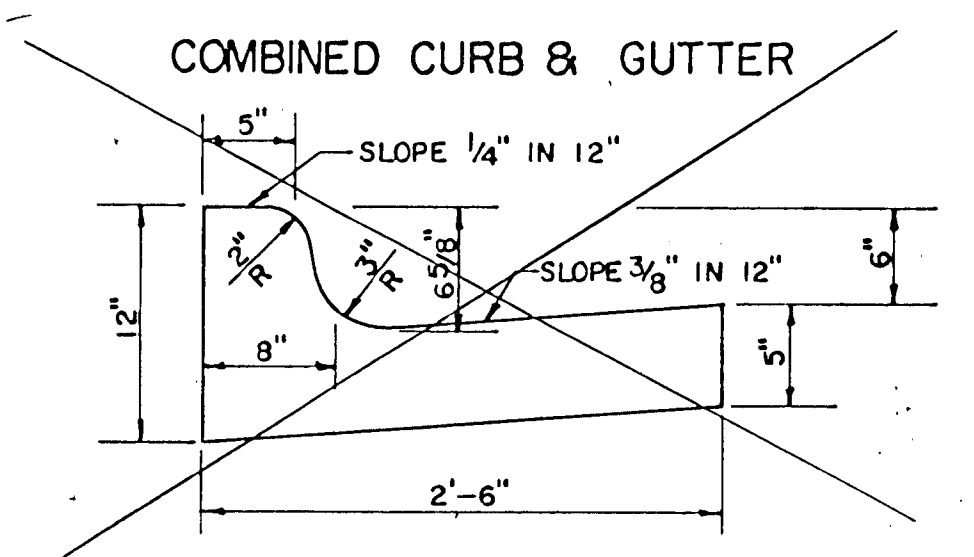
TRANSVERSE SECTION



ELEVATION OFFSETS



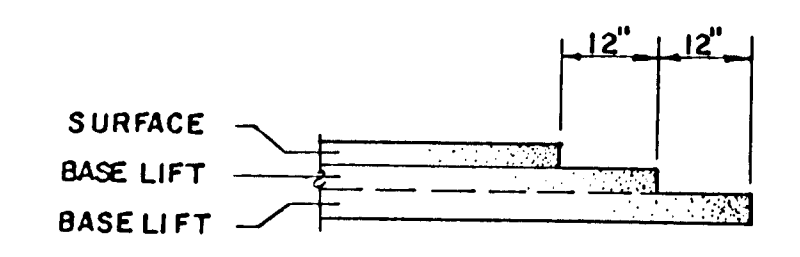
	DISTANCE FROM CENTERLINE (LT. & RT.)											
	0'	2'	4'	6'	7'	8'	10'	12'	14'	14.5'	14.67'	15.17'
A: TOP OF CURBS TO TOP OF SURFACE LIFT	0.13	0.18	0.24	0.30	0.33	0.36	0.43	0.49	—	—	—	—
B: TOP OF CURBS TO TOP OF UPPER BASE LIFT	0.30	0.35	0.41	0.47	0.50	0.53	0.60	0.66	—	—	—	—
C: TOP OF CURBS TO TOP OF LOWER BASE LIFT	0.47	0.52	0.60	0.68	0.71	0.75	0.83	0.90	0.98	1.00	1.01	—
D: TOP OF CURBS TO TOP OF SUBGRADE	0.72	0.77	0.84	0.91	0.94	0.98	1.05	1.12	1.19	1.21	1.21	1.23



GENERAL NOTES

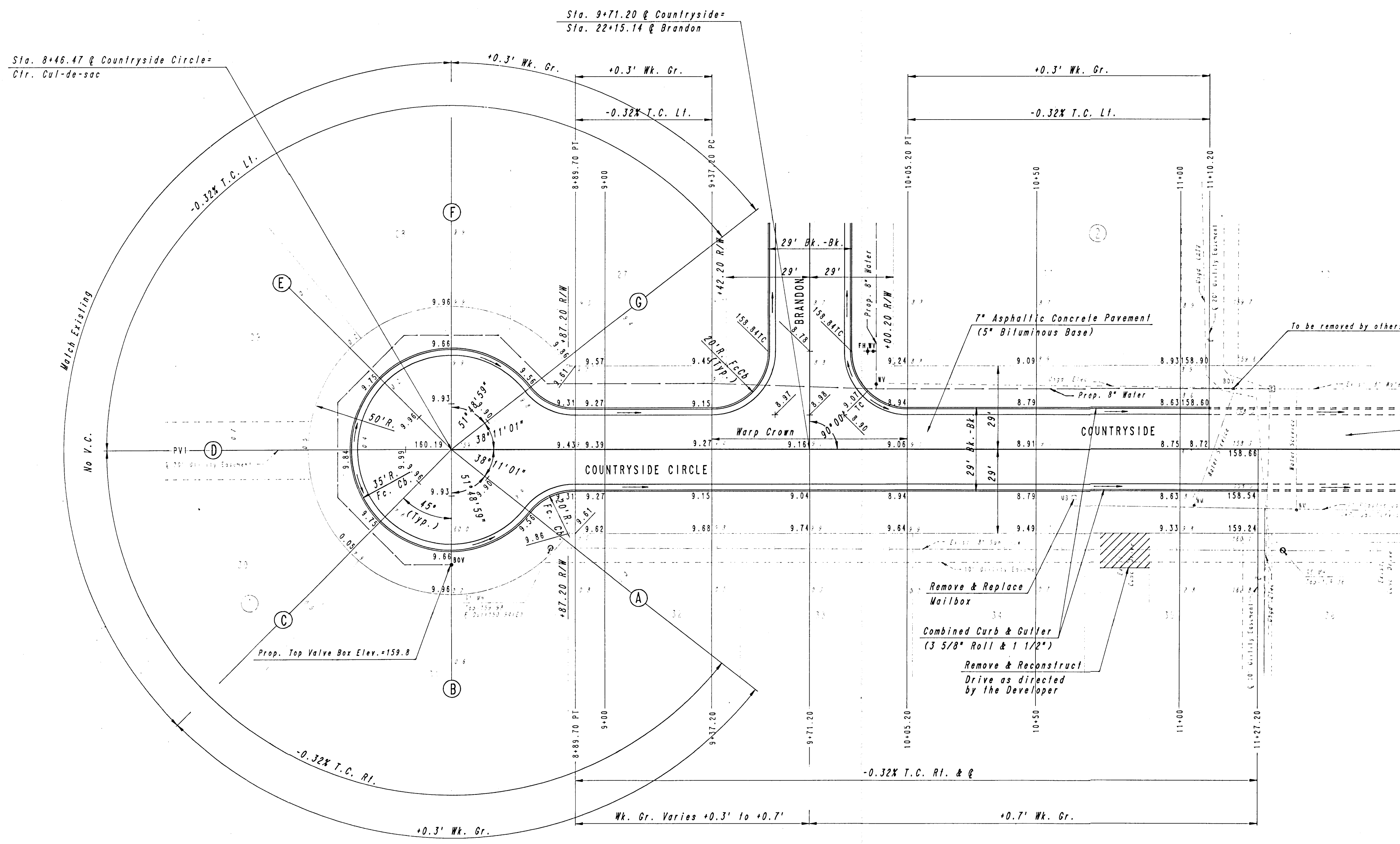
- 1) THE ASPHALTIC CONCRETE PAVEMENT BETWEEN THE COMBINED CURB AND GUTTER SHALL BE PAID AS SQUARE YARDS OF 7" ASPHALTIC CONCRETE (5" BITUMINOUS BASE).
- 2) THE BITUMINOUS BASE UNDER AND BEHIND THE COMBINED CURB AND GUTTER SHALL BE PAID AS SQUARE YARDS OF 2 1/2" BITUMINOUS BASE.
- 3) A TACK COAT OF EMULSIFIED ASPHALT (SC-1H OR CSS-1H) SHALL BE APPLIED AT AN APPROXIMATE RATE OF 0.05 GALLONS PER SQUARE YARD BETWEEN EACH LIFT OF ASPHALTIC MATERIAL.
- 4) BITUMINOUS BASE AND ASPHALTIC CONCRETE WEARING SURFACE SHALL BE PLACED WITH A LAYDOWN MACHINE HAVING AUTOMATIC CONTROLS FOR LINE AND GRADE.
- 5) CONSTRUCTION JOINTS IN EACH LIFT SHALL BE STAGGERED A MINIMUM DISTANCE OF ONE (1) FOOT FROM JOINTS IN PRECEDING LIFTS AND PLACED SO THAT A JOINT WILL BE CONSTRUCTED ON THE CENTERLINE OF THE TOP LIFT.
- 6) CONTRACTOR TO BID ONLY ONE SUBGRADE TREATMENT ALTERNATE WHEN ALTERNATES ARE PROVIDED IN THE PROPOSAL AND CONTRACT. THE ALTERNATE CHOSEN BY THE SUCCESSFUL BIDDER SHALL BE USED IN CONSTRUCTING THIS PROJECT.

TRANSVERSE CONSTRUCTION JOINTS



TRANSVERSE CONSTRUCTION JOINTS SHALL BE CONSTRUCTED IN FLEXIBLE BASE PAVEMENTS AT LOCATIONS WHERE PAVEMENT JOINS EXISTING FLEXIBLE BASE PAVEMENT AS SHOWN BY THE DETAIL. ALL COSTS ASSOCIATED WITH THE CONSTRUCTION OF THE TRANSVERSE JOINT SHALL BE INCLUDED IN THE BID PRICE FOR SQUARE YARDS 7" ASPHALTIC CONCRETE (5" BITUMINOUS BASE).

SCALE: 1" = 20'



Proposed Phase II Improvements
C.O.W. Project No. 472-76-245-80001-000-000-032

CAUTION
Underground Utilities at end of existing pavement. See title sheet for list of Utility Companies and contacts.

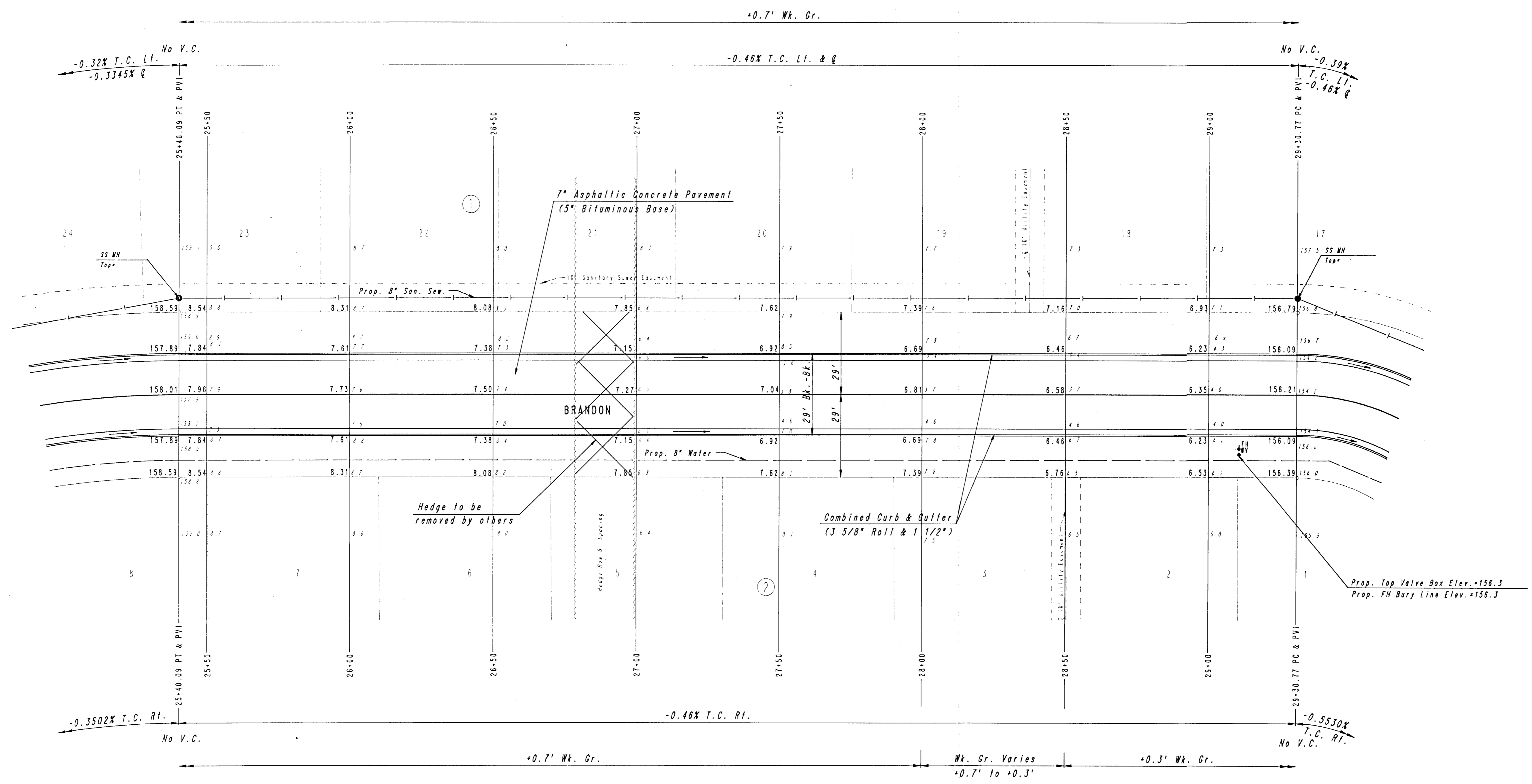
Note: Top of curb elevations shown are for 3 5/8" Roll Curb.

SMITHWOOD FIRST ADDITION
PHASE III

COUNTRYSIDE CIRCLE/COUNTRYSIDE
STA. 8+46.47 TO STA. 11+27.20

PROFESSIONAL ENGINEERING CONSULTANTS, P.A.
ENGINEERS
WICHITA, KANSAS

Designed by	CSB, GDD	Checked by	
Drawn by	DEP	Date	SEPT., 1988 Job No. 88422



SCALE: 1" = 20'

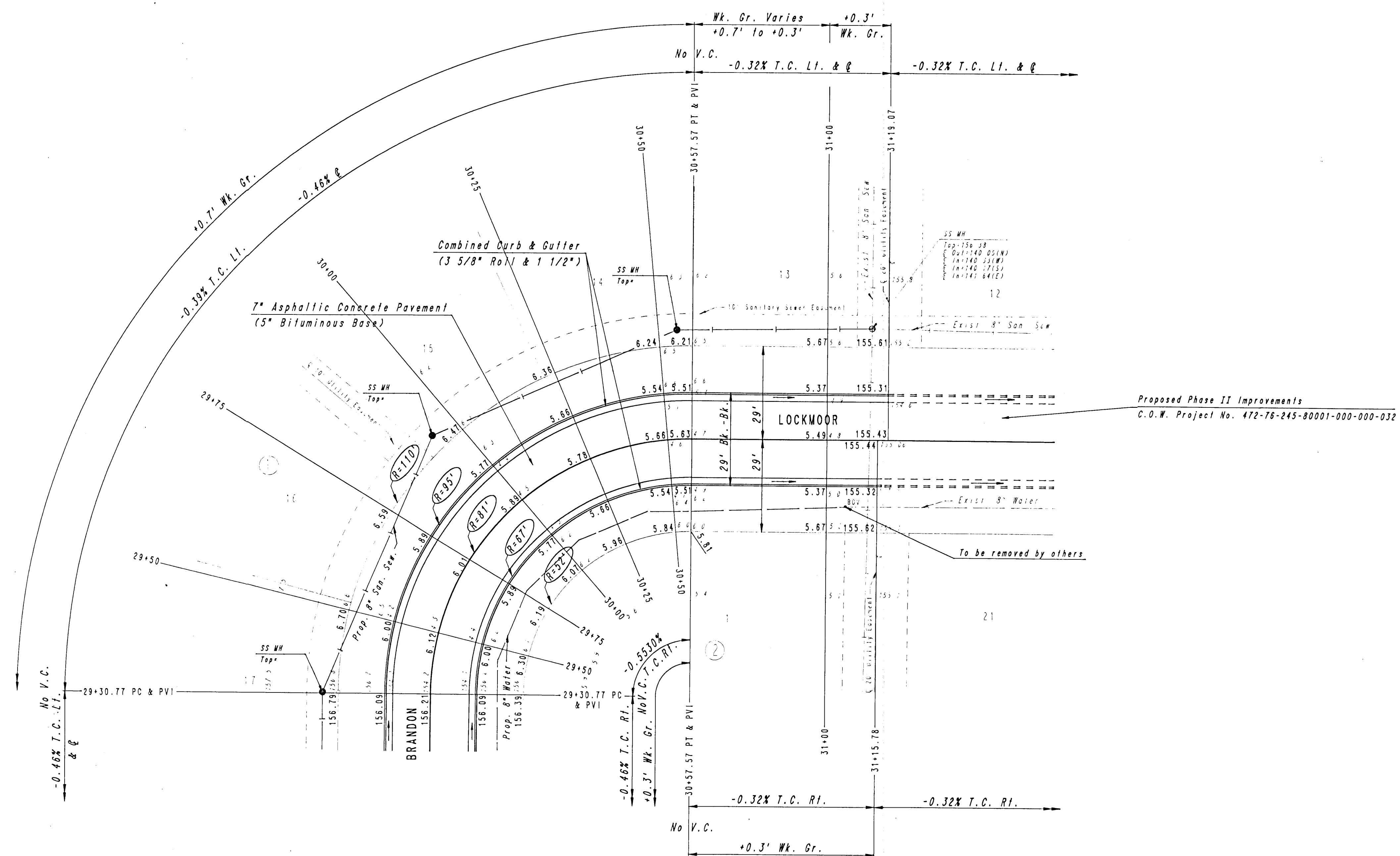
Note: Top of curb elevations shown are for 3 5/8" Roll Curb.

SMITHWOOD FIRST ADDITION
PHASE III

BRANDON
STA. 25+40.09 TO STA. 29+30.77

PROFESSIONAL ENGINEERING CONSULTANTS, P.A.
ENGINEERS
WICHITA, KANSAS

Designed by	CSB, GDD	Checked by	
Drawn by	DEP	Date	SEPT., 1988 Job No. 88422



Curve Data (Arc)
 $\Delta = 89^\circ 41' 28''$
 $D = 70^\circ 44' 08''$
 $R = 81.00'$
 $T = 80.56'$
 $L = 126.80'$
 $E = 33.24'$

Note: Top of curb elevations shown are for 3 5/8" Roll Curb.

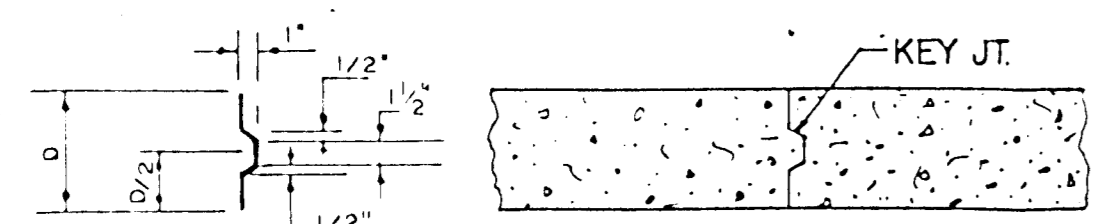
SCALE: 1" = 20'

SMITHWOOD FIRST ADDITION
 PHASE III

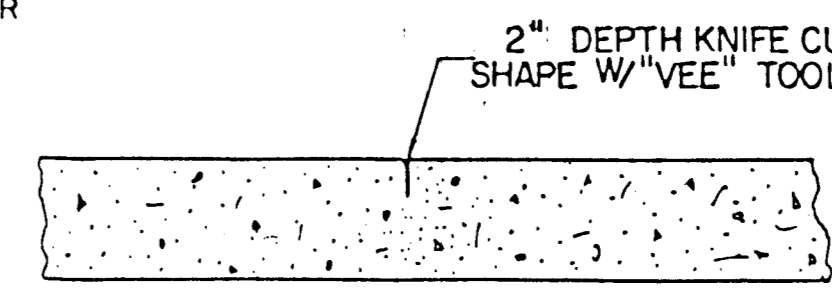
BRANDON/LOCKMOOR
 STA. 29+30.77 TO STA. 31+19.07

PROFESSIONAL ENGINEERING CONSULTANTS, P.A.
 ENGINEERS
 WICHITA, KANSAS

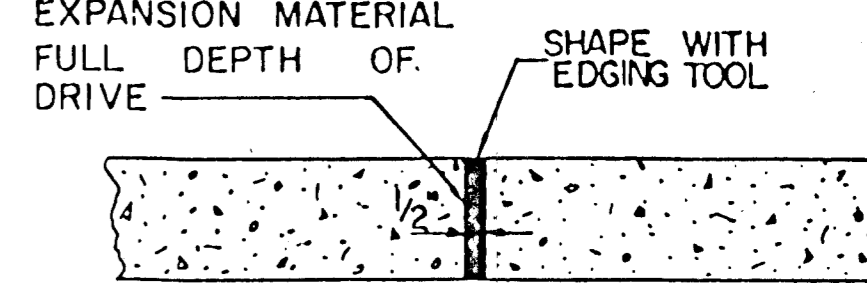
Designed by CSB, GDD	Checked by
Drawn by DEP	Date SEPT., 1988 Job No. 88422



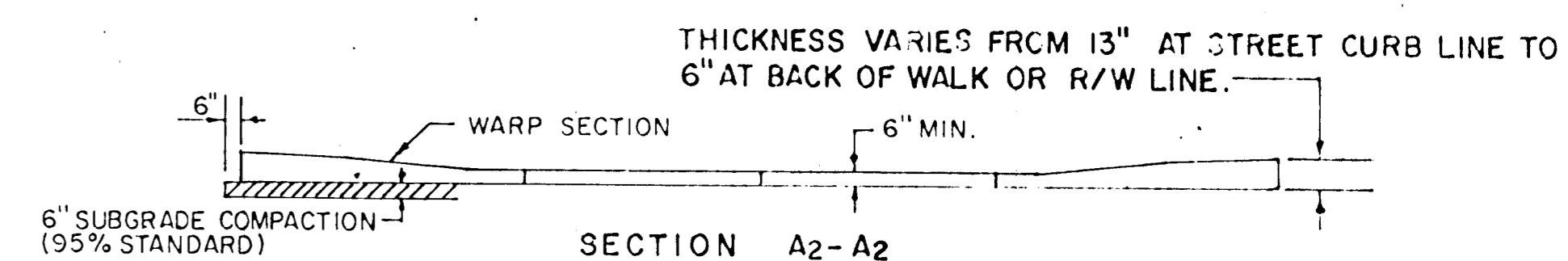
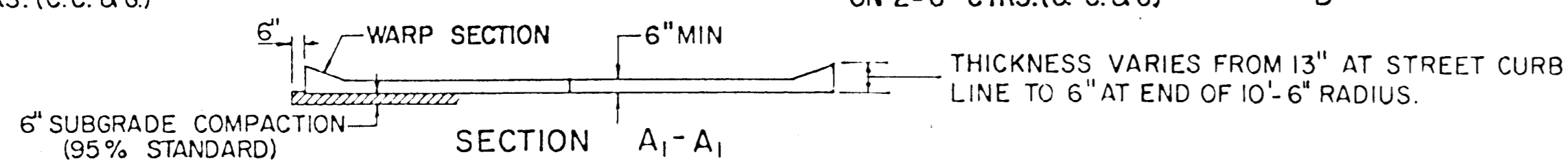
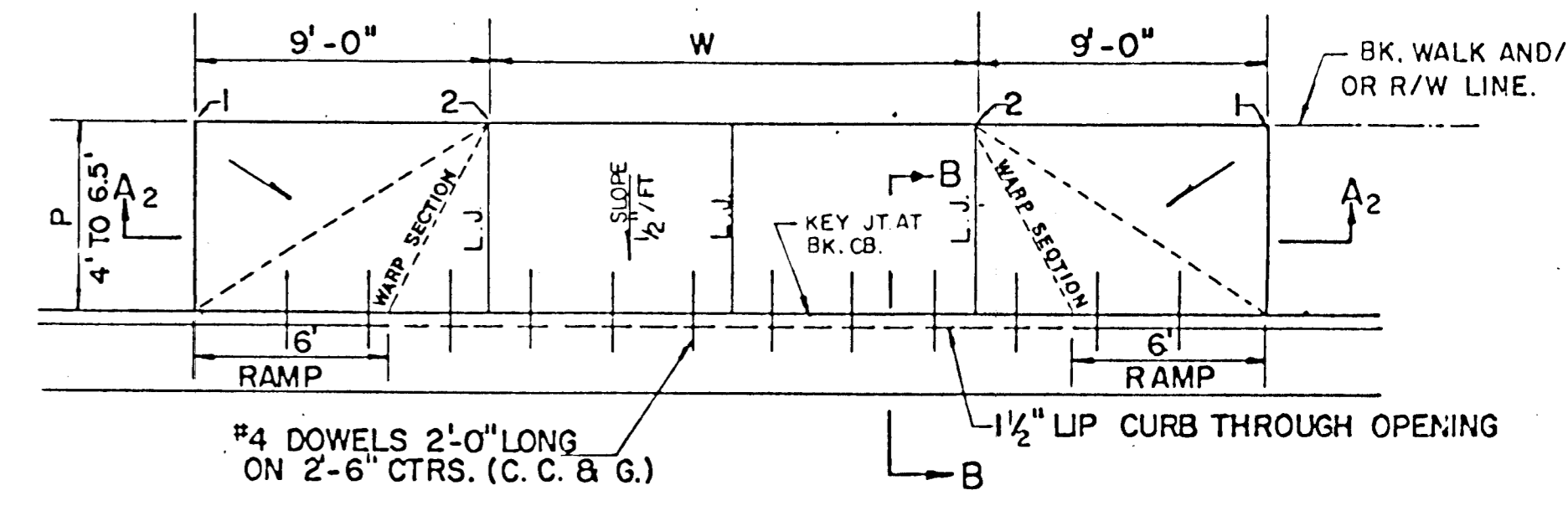
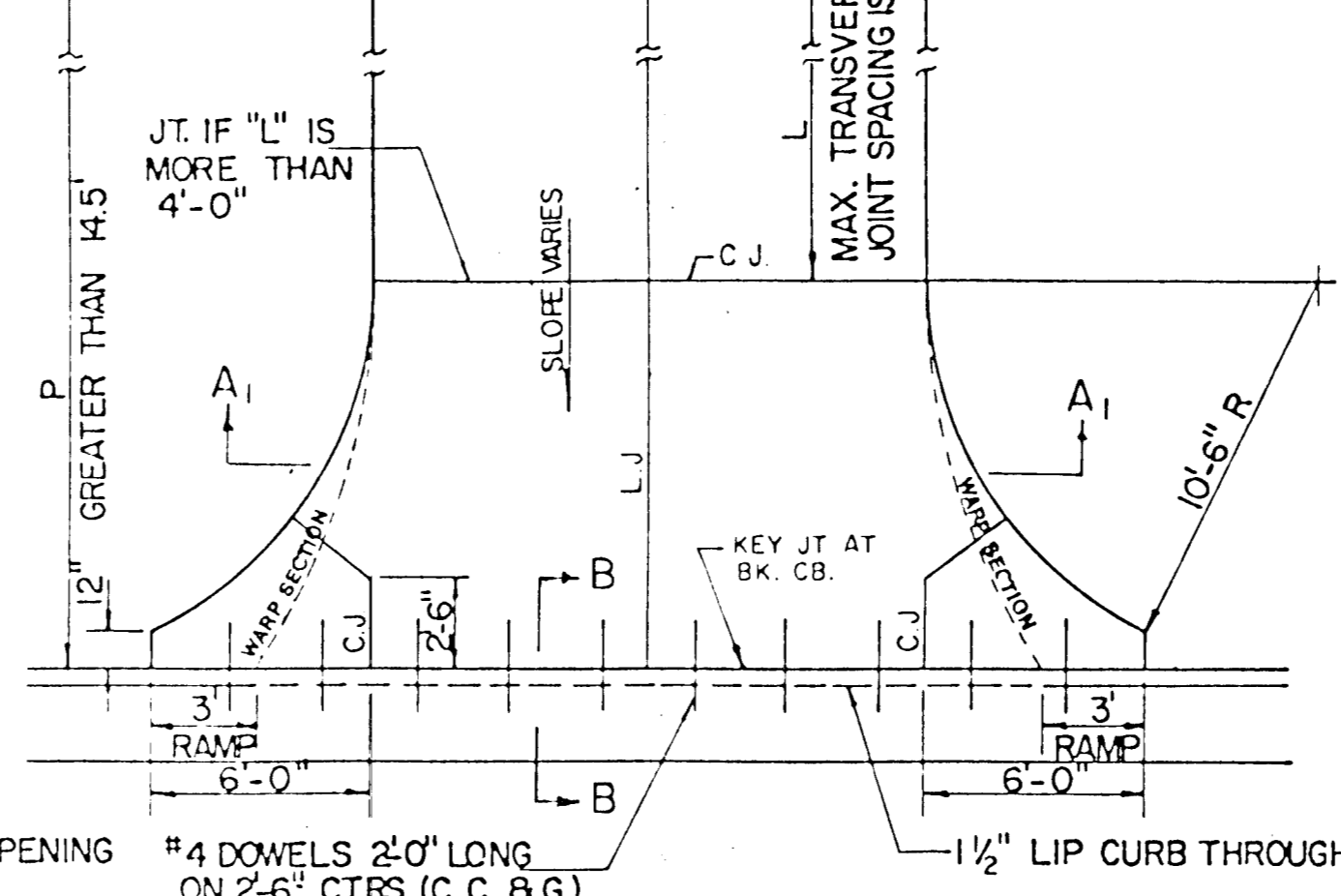
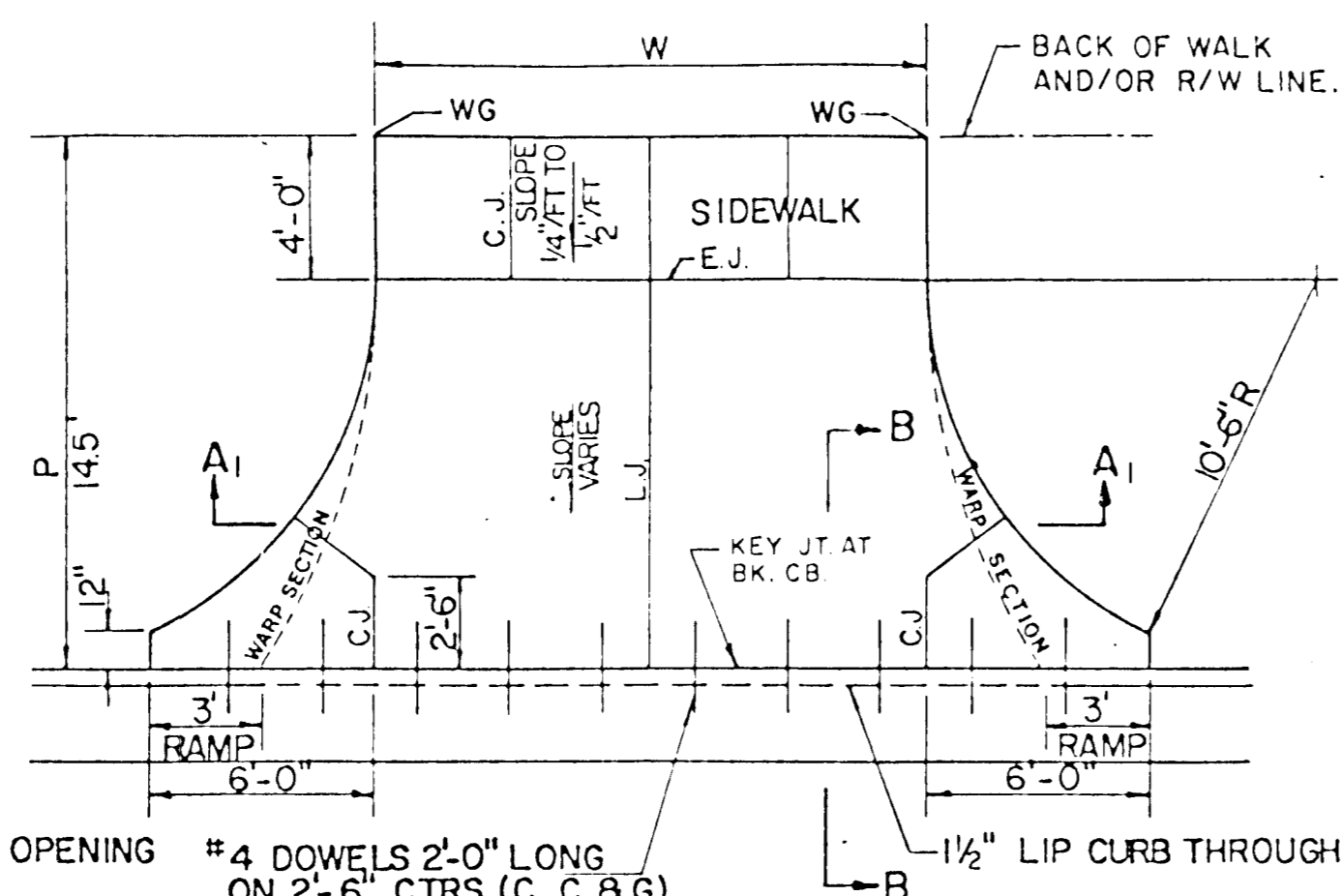
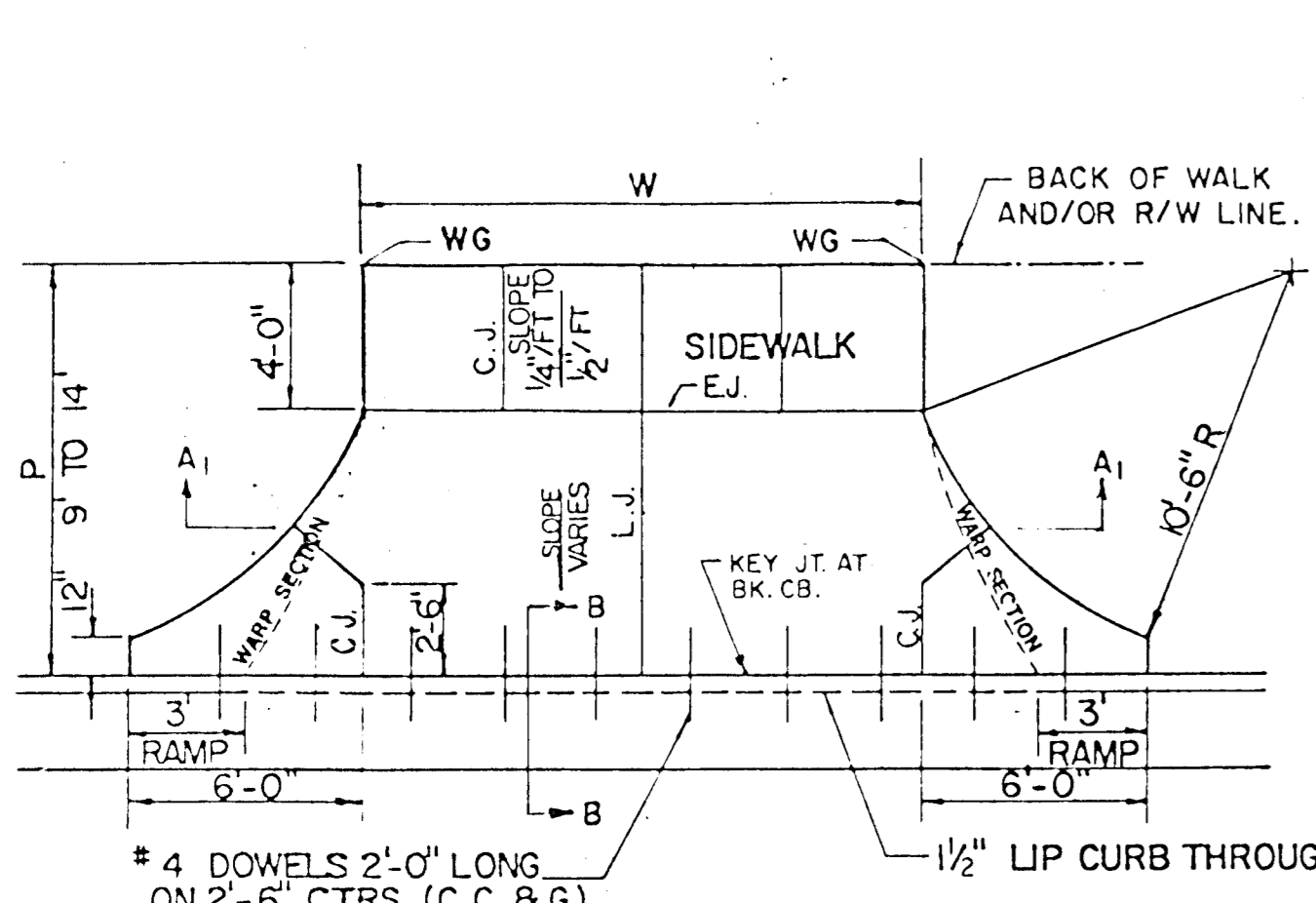
ALT. LONGITUDINAL CONSTRUCTION JOINT



CONTRACTION JOINT (C.J.) OR LONGITUDINAL JOINT (L.J.)
NO SAWN JOINTS WILL BE ALLOWED.

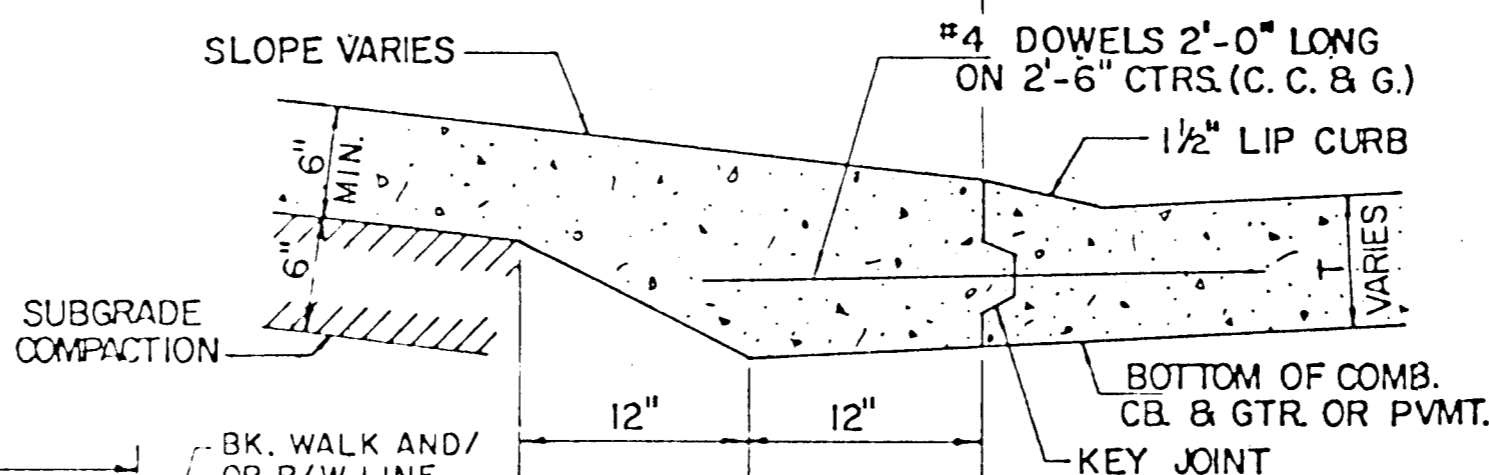


EXPANSION JOINT (E.J.)



PARKING WIDTH "P"		9'	10'	11'	12'	13'	14.5'	20'	25'	30'	35'	40'	45'	50'
ABSOLUTE	MAX. DIST. OF PT. "WG" ABOVE OR BELOW TOP OF FULL CURB	0.35'	0.35'	0.40'	0.45'	0.60'	0.80'	1.35'	1.85'	2.35'	2.85'	3.35'	3.85'	4.35'
OPTIMUM	MAX. DIST. OF PT. "WG" ABOVE OR BELOW TOP OF FULL CURB	0.35'	0.35'	0.40'	0.45'	0.60'	0.70'	1.04'	1.30'	1.56'	1.82'	2.08'	2.34'	2.60'
OPTIMUM	MIN. DIST. OF PT. "WG" ABOVE OR BELOW TOP OF FULL CURB	0.19'	0.21'	0.23'	0.25'	0.27'	0.30'	0.42'	0.52'	0.62'	0.72'	0.82'	0.92'	1.02'
ABSOLUTE	MIN. DIST. OF PT. "WG" ABOVE OR BELOW TOP OF FULL CURB	-0.19'	-0.16'	-0.13'	-0.10'	-0.06'	0.00'	0.00'	0.15'	0.25'	0.35'	0.45'	0.55'	0.65'

RADIUS RAMP DRIVES (P = 9.0' & GREATER)



BACK OF CURB DETAIL SECTION B - B (no scale)

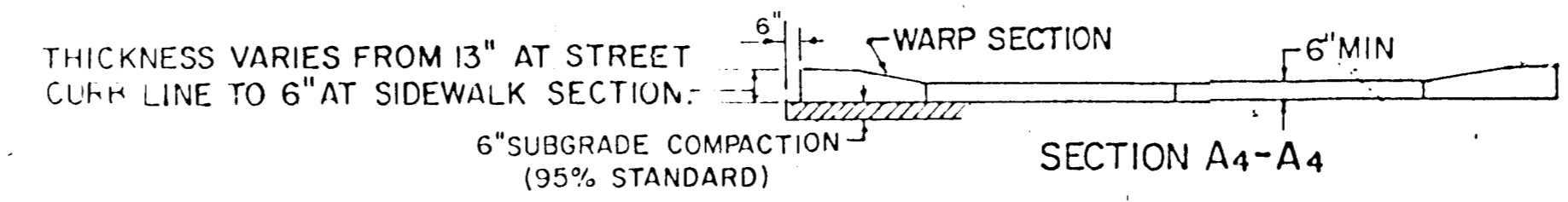
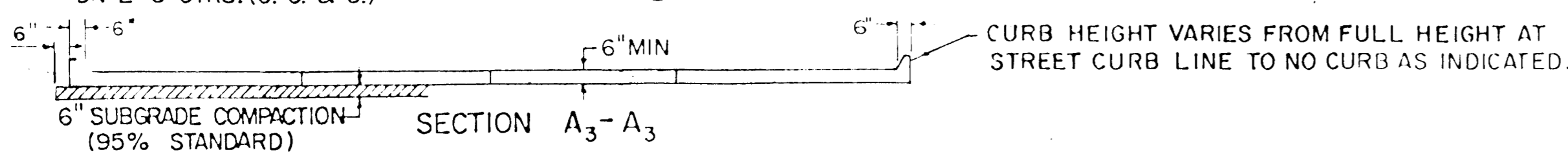
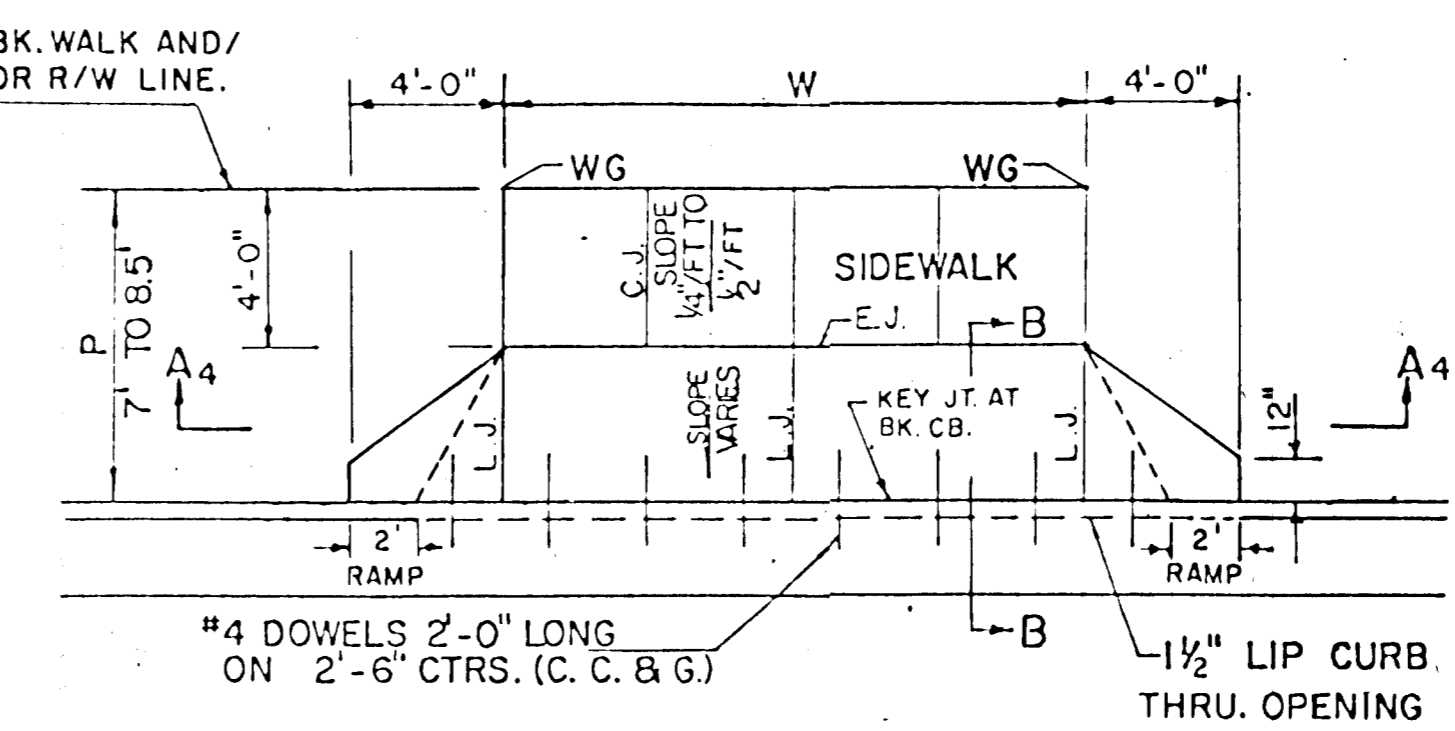
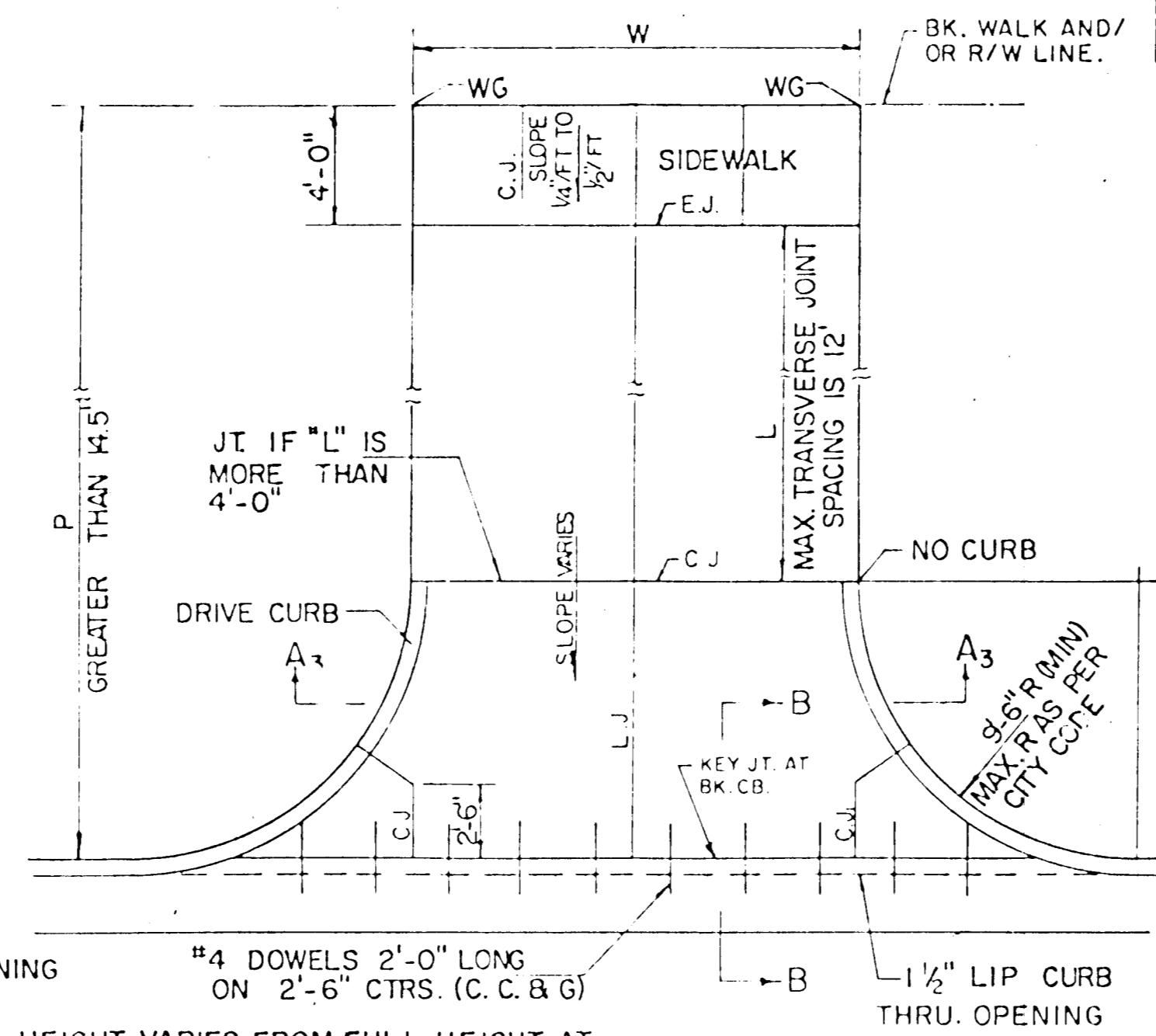
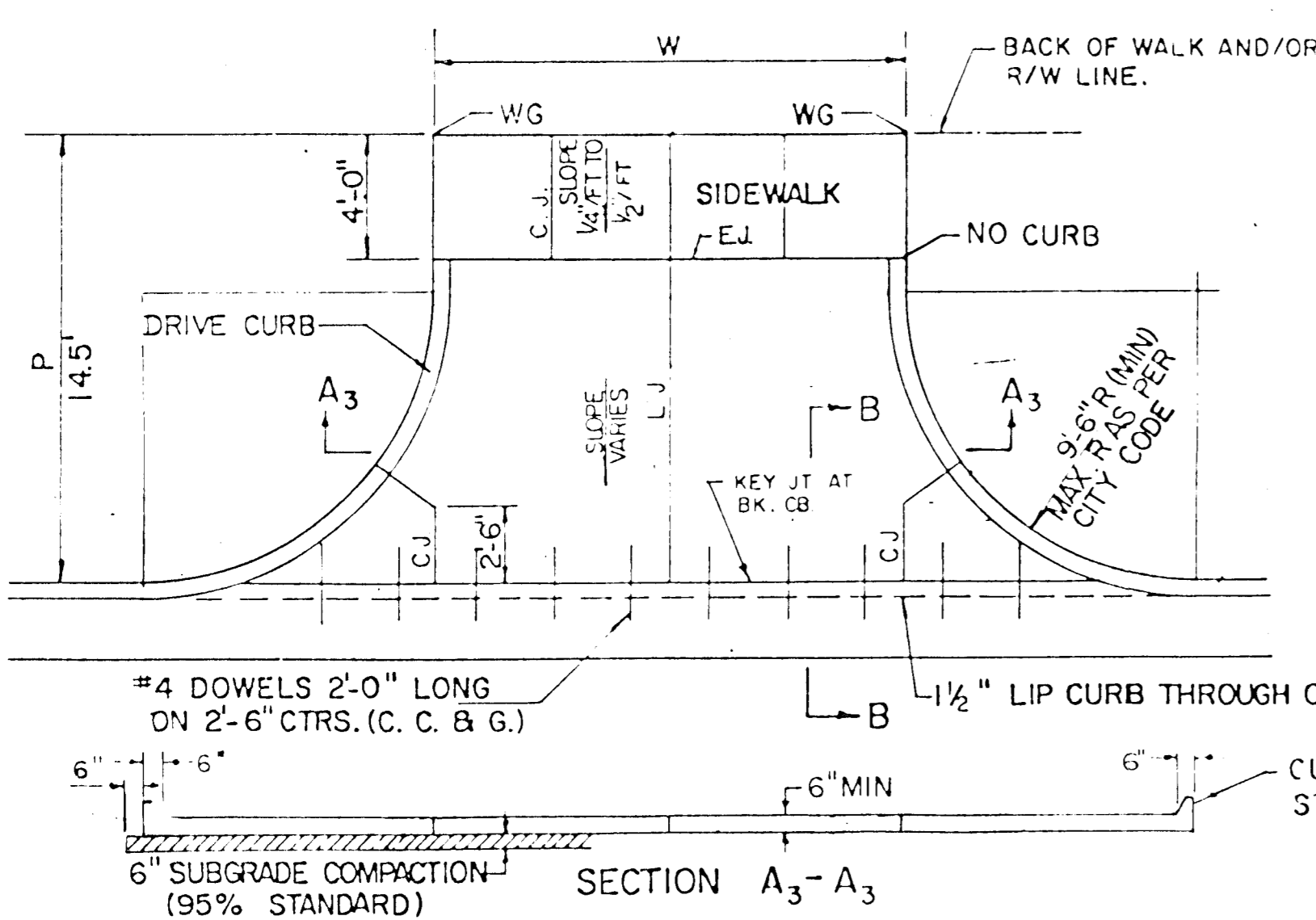
PARKING WIDTH "P"		4'	4.5'	5'	5.5'	6'	6.5'
DIST. OF PT. "1" ABOVE TOP OF FULL CB.		0.08'	0.09'	0.10'	0.12'	0.13'	0.14'
DIST. OF PT. "2" BELOW TOP OF FULL CB.		-0.26'	-0.24'	-0.22'	-0.20'	-0.18'	-0.16'

FULL RAMP DRIVE (P=4.0' TO 6.5')

GENERAL NOTES

- DRIVEWAY CONSTRUCTION DETAILED ON THIS SHEET IS FOR USE WITH FULL HEIGHT STREET CURBS AND IN AREAS WITHOUT FULL WALK CONSTRUCTION IN THE PARKING. SEE OTHER DETAIL SHEETS FOR DRIVEWAY CONSTRUCTION WITH ROLL CURB AND/OR FULL WALK.
- ONE LONGITUDINAL JOINT SHALL BE CONSTRUCTED ALONG THE CENTERLINE OF DRIVES HAVING A "W" DIMENSION OF 24' OR LESS. TWO LONGITUDINAL JOINTS SHALL BE CONSTRUCTED WITH EQUAL SPACINGS NOT TO EXCEED 10' FOR DRIVES WITH A "W" DIMENSION GREATER THAN 24'.
- DRIVEWAY WIDTH DENOTED AS "W" ON THE DETAIL DRAWINGS SHALL BE A MINIMUM OF 10' AND A MAXIMUM OF 30'. THE MAXIMUM OPENING FOR RADIUS TYPE DRIVES WITH CURBS THROUGH THE RADIUS SHALL NOT EXCEED 52' AT THE STREET CURB LINE.
- CONTRACTION JOINT SPACING IN THE DRIVEWAY WALK SECTION SHALL BE A MINIMUM OF 3' AND A MAXIMUM OF 6' AND ARE TO BE EQUALLY SPACED WITHIN THIS RANGE. WALK SECTION SHALL BE CONSTRUCTED TO THE SAME THICKNESS AS THE DRIVEWAY.
- DOWEL BARS SHALL BE OMITTED FROM THE KEYED CONSTRUCTION JOINT ALONG THE BACK OF THE STREET CURB LINE WHEN DRIVEWAYS ARE CONSTRUCTED IN CONJUNCTION WITH NEW CONCRETE PAVEMENT CONSTRUCTION.
- ADDITIONAL THICKNESS OF DRIVE AS INDICATED IN THE DRAWINGS WILL NOT BE PAID FOR DIRECTLY AND THIS COST SHALL BE INCLUDED IN THE UNIT PRICE BID FOR THE DRIVEWAY CONSTRUCTION.
- ONE HALF INCH EXPANSION JOINTS SHALL BE INSTALLED WHEREVER DRIVE CONSTRUCTION ABUTS SIDEWALK. ONE HALF INCH EXPANSION JOINTS SHALL ALSO BE INSTALLED ALONG THE PROPERTY LINE AND/OR BACK OF WALK LINE WHEN DRIVE CONSTRUCTION ALONG THIS LINE ABUTS CONCRETE PARKING LOTS OR CONCRETE DRIVE EXTENSION.
- ALL DRIVEWAYS SHALL BE A MINIMUM OF 6" IN THICKNESS AND SHALL BE WITHOUT REINFORCEMENT. DRIVEWAYS MAY BE CONSTRUCTED THICKER THAN 6" AND THEY MAY BE REINFORCED WITH 6"x12" W4-W4 WELDED WIRE FABRIC WHEN PROPERLY AUTHORIZED BY THE PROPERTY OWNER WITH THE ENGINEER'S CONFORMANCE.
- OPTIMUM DRIVEWAY ELEVATIONS SHOWN IN THE TABLES ARE TO BE USED WHEREVER POSSIBLE. ABSOLUTE MAXIMUM AND MINIMUM ELEVATIONS ARE TO BE USED ONLY WHEN THESE VALUES WILL PERMIT NEW CONSTRUCTION TO MATCH EXISTING DRIVES OR PARKING LOTS. VALUES SHOWN IN THE TABLES ARE BASED ON A FULL CURB HEIGHT ELEVATION OF 0.55' ABOVE THE GUTTER FLOW LINE AND MUST BE ADJUSTED ACCORDINGLY FOR OTHER CURB HEIGHTS. VALUES SHOWN IN THE TABLES WITH MINUS SIGNS INDICATE ELEVATIONS BELOW TOP OF FULL HEIGHT CURB.

REVISED OCTOBER 1985
SCALE: 1" = 5'



PARKING WIDTH "P"		14.5'	20'	25'	30'	35'	40'	45'	50'
ABSOLUTE	MAX. DIST. OF PT. "WG" ABOVE TOP OF FULL CB.	0.80'	1.35'	1.85'	2.35'	2.85'	3.35'	3.85'	4.35'
OPTIMUM	MAX. DIST. OF PT. "WG" ABOVE TOP OF FULL CB.	0.70'	1.04'	1.30'	1.56'	1.82'	2.08'	2.34'	2.60'
OPTIMUM	MIN. DIST. OF PT. "WG" ABOVE TOP OF FULL CB.	0.30'	0.42'	0.52'	0.62'	0.72'	0.82'	0.92'	1.02'
ABSOLUTE	MIN. DIST. OF PT. "WG" ABOVE TOP OF FULL CB.	0.00'	0.00'	0.15'	0.25'	0.35'	0.45'	0.55'	0.65'

FULL RADIUS DRIVES (P=14.5' & GREATER)

PARKING WIDTH "P"		7'	7.5'	8'	8.5'
ABSOLUTE	MAX. DIST. OF PT. "WG" ABOVE TOP OF FULL CB.	0.00'	0.10'	0.20'	0.30'
OPTIMUM	MAX. DIST. OF PT. "WG" ABOVE TOP OF FULL CB.	0.00'	0.0'	0.20'	0.30'
OPTIMUM	MIN. DIST. OF PT. "WG" BELOW TOP OF FULL CB.	-0.15'	-0.16'	-0.17'	-0.17'
ABSOLUTE	MAX. DIST. OF PT. "WG" BELOW TOP OF FULL CB.	-0.25'	-0.20'	-0.20'	-0.20'

FULL RAMP DRIVE (P=7.0' TO 8.5')

STANDARD DRIVE ENTRANCES
FULL HEIGHT CURB
CITY OF WICHITA, KANSAS

PROJECT NUMBER
472-76-245-80081-000-000-007