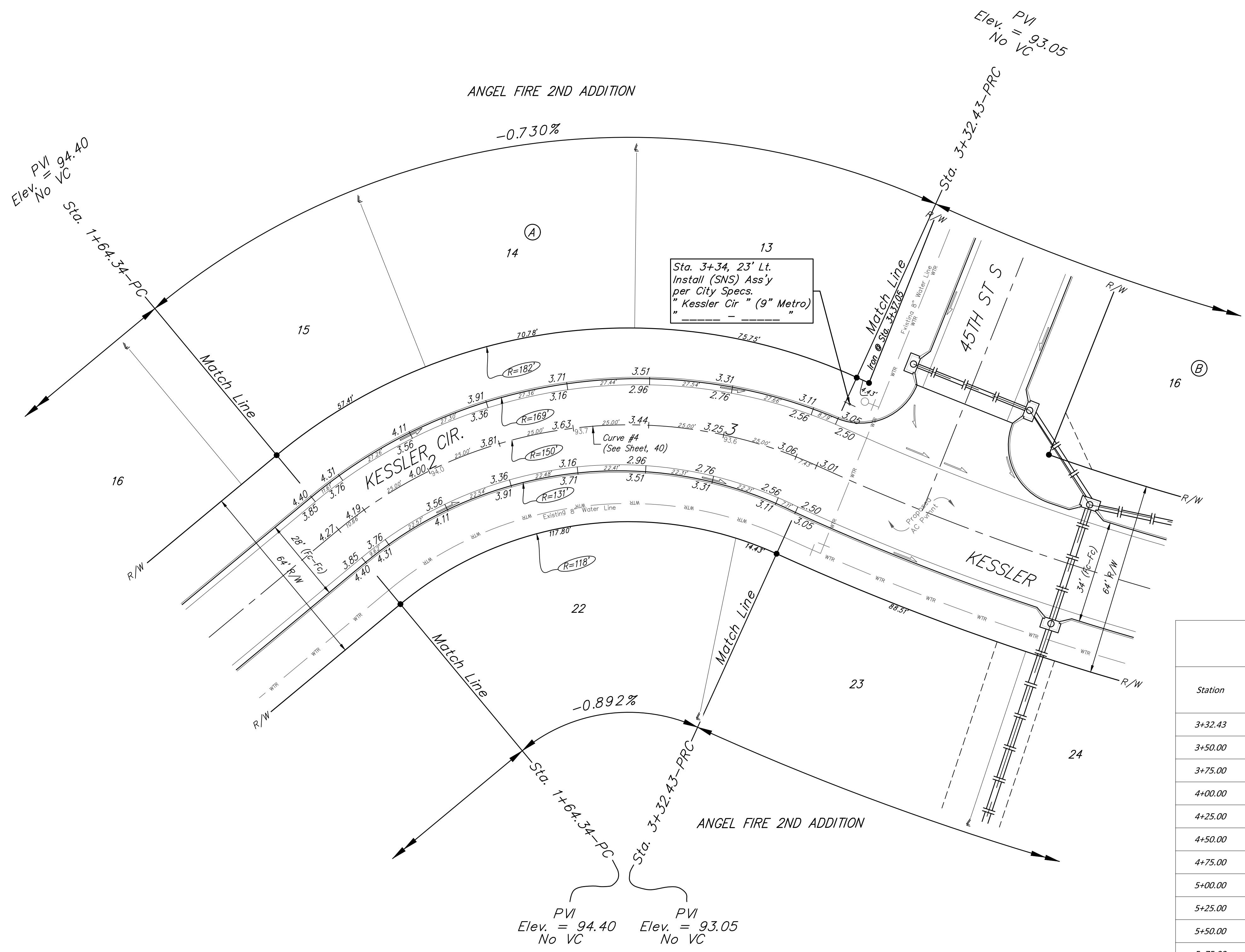
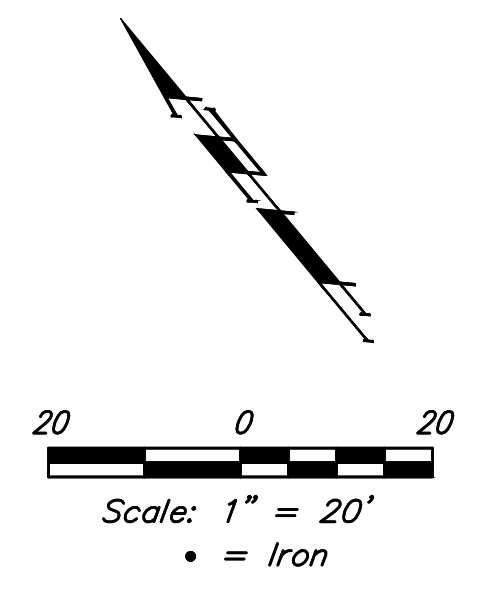


BENCHMARKS:
 BRASS DISC ON TOP OF CURB
 EAST END OF CURB RETURN,
 NORTH OF THE NW COR., LOT 49,
 BLOCK C, ANGEL FIRE ADDITION.
 ELEV. = 94.37 CITY DATUM
 ELEV. = 1282.23 NAVD88

BRASS DISC ON TOP OF CURB
 NORTH END OF CURB RETURN,
 WEST OF THE SW COR., LOT 1,
 BLOCK B, ANGEL FIRE ADDITION.
 ELEV. = 94.82 CITY DATUM
 ELEV. = 1282.68 NAVD88



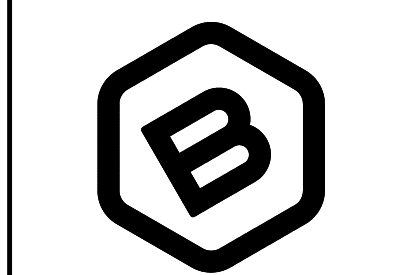
Curve #5
 Curve Data Based on Centerline

Rad. = 800' Delta = 25°43'05" Tangent = 182.62'
 Arc = 103.84' L.C. = 356.08' Def./Ft. = 7.43010 Min.

Station	Arc	Face Chord Lengths		Defl.	Total Defl.
		8' Left	8' Right		
3+32.43	-	-	-	0°00'00"	0°00'00"
3+50.00	17.57'	58.85'	62.64'	2°10'33"	2°10'33"
3+75.00	25.00'	83.71'	89.11'	3°05'45"	5°16'18"
4+00.00	25.00'	83.71'	89.11'	3°05'45"	8°22'03"
4+25.00	25.00'	83.71'	89.11'	3°05'45"	11°27'48"
4+50.00	25.00'	83.71'	89.11'	3°05'45"	14°33'33"
4+75.00	25.00'	83.71'	89.11'	3°05'46"	17°39'19"
5+00.00	25.00'	83.71'	89.11'	3°05'45"	20°45'04"
5+25.00	25.00'	83.71'	89.11'	3°05'45"	23°50'49"
5+50.00	25.00'	83.71'	89.11'	3°05'45"	26°56'34"
5+75.00	25.00'	83.71'	89.11'	3°05'45"	30°02'19"
6+00.00	25.00'	83.71'	89.11'	3°05'45"	33°08'04"
6+25.00	25.00'	83.71'	89.11'	3°05'45"	36°13'49"
6+50.00	25.00'	83.71'	89.11'	3°05'46"	39°19'35"
6+75.00	25.00'	83.71'	89.11'	3°05'45"	42°25'20"
6+91.52	16.52'	55.33'	58.90'	2°02'44"	44°28'04"

NOTE: Transition from 28' (Fc-Fc) to 34' (Fc-Fc) from Sta. 1+64.34 to Sta. 3+32.43

Roll type curb & gutter to be constructed on the pavement on this sheet. Top of curb elevation are given for full height curb.



BAUGHMAN COMPANY
 315 Ellis St.
 Wichita, KS 67211
 316-262-7271
 BaughmanCo.com

ANGEL FIRE
 2ND ADDITION
KESSLER CIR.

Sta. 1+64.34 to Sta. 3+32.43
 PROJECT NUMBER:
 472-2021-085714
 DESIGN: NBW DRAWN: CDW
 DATE: August 20, 2021
 SHEET OF
11 44

File: E:\Projects\Angel Fire 2nd Addition_11-03-P797\Engineering\Phase 1\Str. 21-02-E849\STR PLANS.dwg