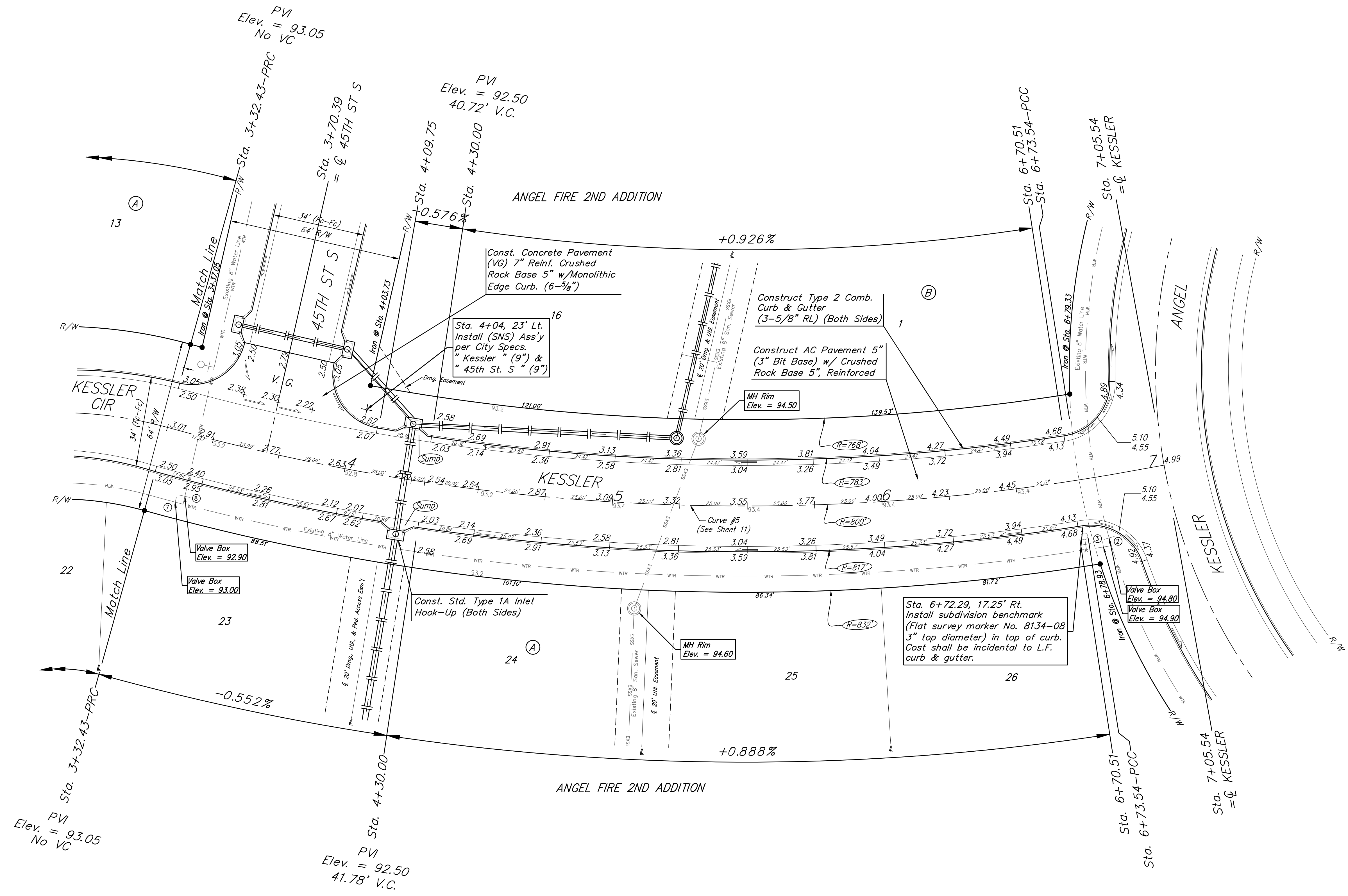
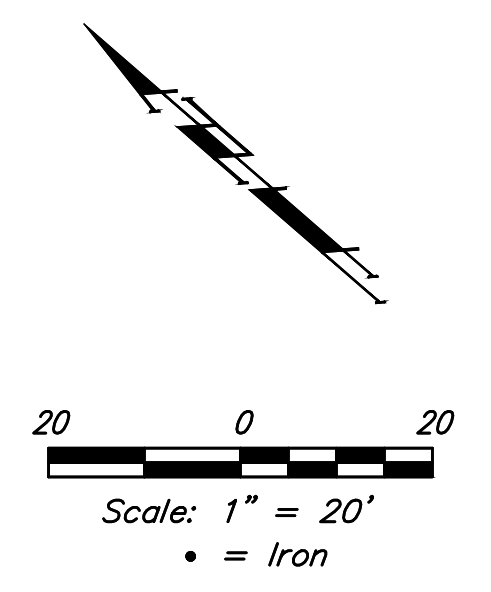


BENCHMARKS:
 BRASS DISC ON TOP OF CURB
 EAST END OF CURB RETURN,
 NORTH OF THE NW COR., LOT 49,
 BLOCK C, ANGEL FIRE ADDITION.
 ELEV. = 94.37 CITY DATUM
 ELEV. = 1282.23 NAVD88

BRASS DISC ON TOP OF CURB
 NORTH END OF CURB RETURN,
 WEST OF THE SW COR., LOT 1,
 BLOCK B, ANGEL FIRE ADDITION.
 ELEV. = 94.82 CITY DATUM
 ELEV. = 1282.68 NAVD88



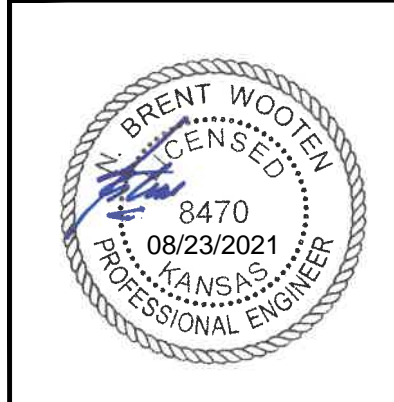
Roll type curb & gutter to be constructed on the pavement on this sheet.
 Top of curb elevation are given for full height curb.

Subdivision Benchmarks

Street & Station	Location Description	Elevation
Kessler 6+72.29, 17.25' Rt.	Adjacent to Fire Hydrant at West End of the South Return Kessler & Kessler, NE Cor., Lot 26, Blk A	

VALVE LOCATION TABLE

VALVE NUMBER	STREET	BASILINE STATION	OFFSET DISTANCE	OFFSET DIRECTION
7	KESSLER	3+42.30	26.0'	Rt.
8	KESSLER	3+45.11	23.0'	Rt.
3	KESSLER	6+78.46	26.0'	Rt.



B

**BAUGHMAN
COMPANY**

315 Ellis St.
Wichita, KS 67211
316-262-7271
BaughmanCo.com

ANGEL FIRE
2ND ADDITION

KESSLER

Sta. 3+32.43 to 7+05.54
 PROJECT NUMBER:
 472-2021-085714
 DESIGN: NBW DRAWN: CDW
 DATE: August 20, 2021
 SHEET OF
12 44

File: E:\Projects\Angel Fire 2nd Addition_11-03-P797\Engineering\Phase 1\Str. 21-02-EB49\STR PLANS.dwg