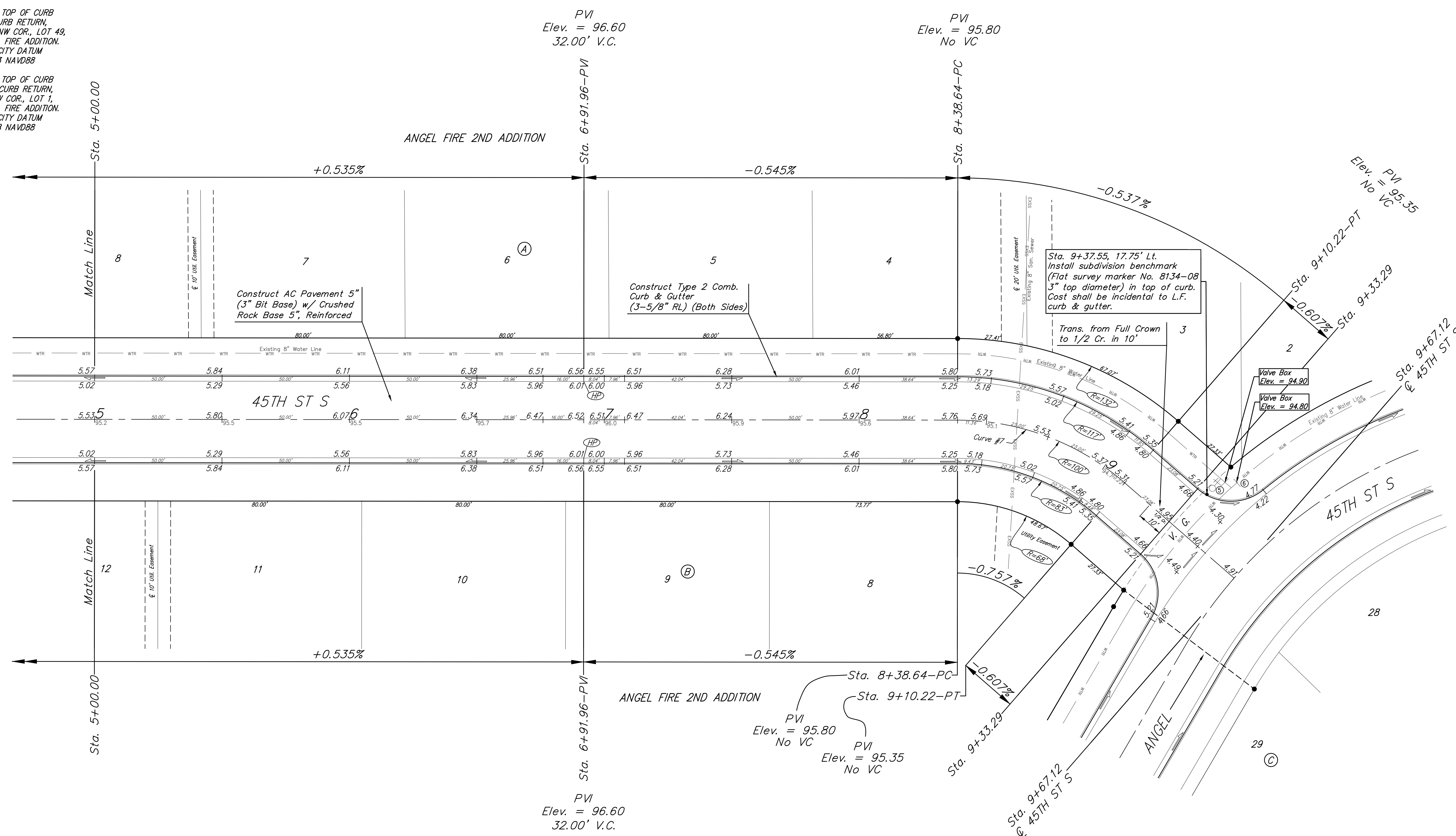
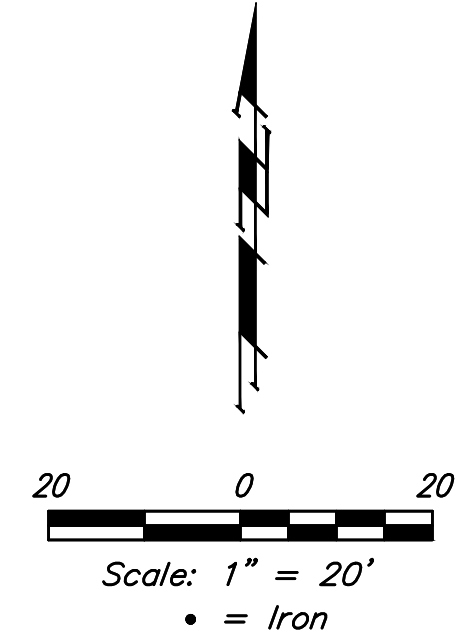


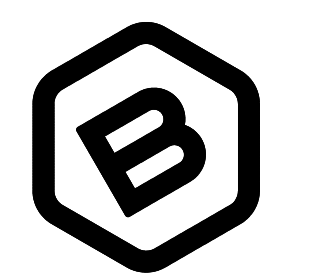
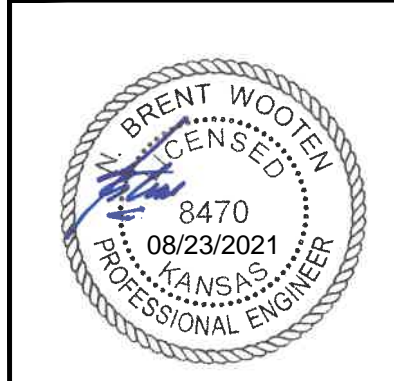
BENCHMARKS:  
 BRASS DISC ON TOP OF CURB  
 EAST END OF CURB RETURN,  
 NORTH OF THE NW COR., LOT 49,  
 BLOCK C, ANGEL FIRE ADDITION.  
 ELEV. = 94.37 CITY DATUM  
 ELEV. = 1282.23 NAVD88

BRASS DISC ON TOP OF CURB  
 NORTH END OF CURB RETURN,  
 WEST OF THE SW COR., LOT 1,  
 BLOCK B, ANGEL FIRE ADDITION.  
 ELEV. = 94.82 CITY DATUM  
 ELEV. = 1282.68 NAVD88



Curve #7  
 Curve Data Based on Centerline  
 Rad. = 100' Delta = 41°00'42" Tangent = 37.40'  
 Arc = 103.84' L.C. = 70.06' Def./Ft. = 11.84852 Min.

Station	Arc	Face Chord Lengths		Defl.	Total Defl.
		8' Left	8' Right		
8+38.64	-	-	-	0°00'00"	0°00'00"
8+50.00	11.36'	9.79'	5.87'	2°14'36"	2°14'36"
8+75.00	25.00'	21.51'	12.91'	4°56'13"	7°10'49"
9+00.00	25.00'	21.51'	12.91'	4°56'13"	12°07'02"
9+10.22	10.22'	8.80'	5.28'	2°01'05"	14°08'07"



**BAUGHMAN COMPANY**  
 315 Ellis St.  
 Wichita, KS 67211  
 316-262-7271  
 BaughmanCo.com

ANGEL FIRE  
 2ND ADDITION  
**45TH ST S**

Sta. 5+00 to Sta. 9+67.12  
 PROJECT NUMBER:  
 472-2021-085714  
 DESIGN: NBW DRAWN: CDW  
 DATE: August 20, 2021  
 SHEET OF  
**14 44**

File: E:\Projects\Angel Fire 2nd Addition\_11-03-P797\Engineering\Phase 1\Str. 21-02-EB49\STR PLANS.dwg